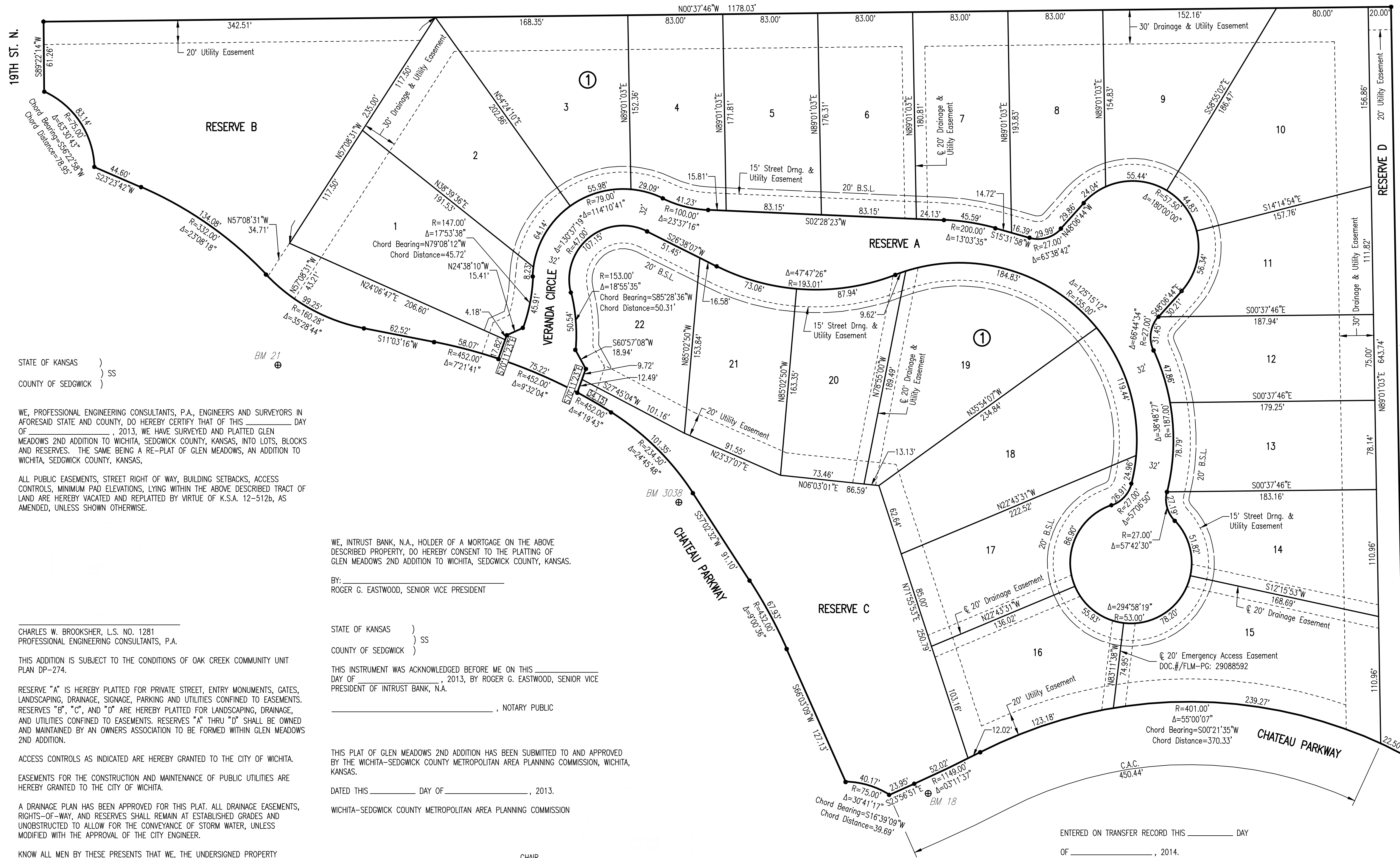


# GLEN MEADOWS 2ND ADDITION TO WICHITA, SEDGWICK COUNTY, KANSAS



**PEC**

SCALE: 1" = 50'

- = 1/2" REBAR W/PEC CAP UNLESS OTHERWISE NOTED
- ⊕ = BENCHMARK

**BENCHMARKS**

BM #18  
CHISELED SQUARE ON CENTER FACE OF CURB INLET ON WEST SIDE OF CHATEAU PARKWAY, 600' SOUTH OF 21ST STREET NORTH NEAR NORTHWEST CORNER GLENVIEW ADDITION.  
ELEV. = 1379.13 NAVD88

BM #3038  
BRASS DISC ON TOP OF WEST CURB OF CHATEAU PARKWAY, 165 FEET NORTH OF GLENVIEW CIRCLE.  
ELEV. = 1384.60 NAVD88

BM #21  
CHISELED SQUARE ON WEST SIDE OF CONCRETE BASE FOR LIGHT POLE ON EAST SIDE OF CHATEAU PARKWAY NEAR SOUTHWEST CORNER OF GLENVIEW ADDITION, 1200'± SOUTH OF 21ST STREET NORTH.  
ELEV. = 1390.30 NAVD88

MINIMUM OPENINGS	ELEVATION (NAVD88)
<b>BLOCK 1</b>	
LOTS 1, 22	1392.00
LOTS 2-3	1393.00
LOTS 4-6	1392.50
LOTS 7-8	1391.50
LOTS 9	1391.00
LOTS 10	1389.00
LOTS 11-12	1382.50
LOT 13	1381.50
LOT 14	1385.00
LOT 15	1384.00
LOTS 16-17	1383.00
LOT 18-20	1382.00
LOT 21	1386.50

STATE OF KANSAS )  
                          ) SS  
COUNTY OF SEDGWICK )

WE, PROFESSIONAL ENGINEERING CONSULTANTS, P.A., ENGINEERS AND SURVEYORS IN AFORESAID STATE AND COUNTY, DO HEREBY CERTIFY THAT OF THIS DAY OF \_\_\_\_\_, 2013, WE HAVE SURVEYED AND PLATTED GLEN MEADOWS 2ND ADDITION TO WICHITA, SEDGWICK COUNTY, KANSAS, INTO LOTS, BLOCKS AND RESERVES. THE SAME BEING A RE-PLAT OF GLEN MEADOWS, AN ADDITION TO WICHITA, SEDGWICK COUNTY, KANSAS.

ALL PUBLIC EASEMENTS, STREET RIGHT OF WAY, BUILDING SETBACKS, ACCESS CONTROLS, MINIMUM PAD ELEVATIONS, LYING WITHIN THE ABOVE DESCRIBED TRACT OF LAND ARE HEREBY VACATED AND REPLATTED BY VIRTUE OF K.S.A. 12-512b, AS AMENDED, UNLESS SHOWN OTHERWISE.

WE, INTRUST BANK, N.A., HOLDER OF A MORTGAGE ON THE ABOVE DESCRIBED PROPERTY, DO HEREBY CONSENT TO THE PLATTING OF GLEN MEADOWS 2ND ADDITION TO WICHITA, SEDGWICK COUNTY, KANSAS.

BY: \_\_\_\_\_  
ROGER G. EASTWOOD, SENIOR VICE PRESIDENT

CHARLES W. BROOKSHER, L.S. NO. 1281  
PROFESSIONAL ENGINEERING CONSULTANTS, P.A.

THIS ADDITION IS SUBJECT TO THE CONDITIONS OF OAK CREEK COMMUNITY UNIT PLAN DP-274.

RESERVE "A" IS HEREBY PLATTED FOR PRIVATE STREET, ENTRY MONUMENTS, GATES, LANDSCAPING, DRAINAGE, SIGNAGE, PARKING AND UTILITIES CONFINED TO EASEMENTS. RESERVES "B", "C", AND "D" ARE HEREBY PLATTED FOR LANDSCAPING, DRAINAGE, AND UTILITIES CONFINED TO EASEMENTS. RESERVES "A" THRU "D" SHALL BE OWNED AND MAINTAINED BY AN OWNERS ASSOCIATION TO BE FORMED WITHIN GLEN MEADOWS 2ND ADDITION.

ACCESS CONTROLS AS INDICATED ARE HEREBY GRANTED TO THE CITY OF WICHITA.

EASEMENTS FOR THE CONSTRUCTION AND MAINTENANCE OF PUBLIC UTILITIES ARE HEREBY GRANTED TO THE CITY OF WICHITA.

A DRAINAGE PLAN HAS BEEN APPROVED FOR THIS PLAT. ALL DRAINAGE EASEMENTS, RIGHTS-OF-WAY, AND RESERVES SHALL REMAIN AT ESTABLISHED GRADES AND UNOBSTRUCTED TO ALLOW FOR THE CONVEYANCE OF STORM WATER, UNLESS MODIFIED WITH THE APPROVAL OF THE CITY ENGINEER.

KNOW ALL MEN BY THESE PRESENTS THAT WE, THE UNDERSIGNED PROPERTY OWNERS OF THE LAND AS ABOVE SET FORTH IN THE SURVEYOR'S CERTIFICATE, HAVE CAUSED THE LAND TO BE SURVEYED AND PLATTED INTO LOTS, A BLOCK, AND RESERVES. THE SAME TO BE KNOWN AS GLEN MEADOWS 2ND ADDITION TO WICHITA, SEDGWICK COUNTY, KANSAS.

OWNER:  
SLAWSON COMMERCIAL PROPERTIES, LLC  
BY: \_\_\_\_\_  
JERRY D. JONES, VICE PRESIDENT

STATE OF KANSAS )  
                          ) SS  
COUNTY OF SEDGWICK )

THIS INSTRUMENT WAS ACKNOWLEDGED BEFORE ME ON THIS DAY OF \_\_\_\_\_, 2013, BY JERRY D. JONES, VICE PRESIDENT OF SLAWSON COMMERCIAL PROPERTIES, LLC.

\_\_\_\_\_, NOTARY PUBLIC  
SARAH E. HATTRUP

STATE OF KANSAS )  
                          ) SS  
COUNTY OF SEDGWICK )

THIS INSTRUMENT WAS ACKNOWLEDGED BEFORE ME ON THIS DAY OF \_\_\_\_\_, 2013, BY ROGER G. EASTWOOD, SENIOR VICE PRESIDENT OF INTRUST BANK, N.A.

\_\_\_\_\_, NOTARY PUBLIC

THIS PLAT OF GLEN MEADOWS 2ND ADDITION HAS BEEN SUBMITTED TO AND APPROVED BY THE WICHITA-SEDGWICK COUNTY METROPOLITAN AREA PLANNING COMMISSION, WICHITA, KANSAS.

DATED THIS \_\_\_\_\_ DAY OF \_\_\_\_\_, 2013.

WICHITA-SEDGWICK COUNTY METROPOLITAN AREA PLANNING COMMISSION

\_\_\_\_\_, CHAIR  
DON KLAUSMEYER  
\_\_\_\_\_, SECRETARY  
JOHN L. SCHLEGEL

REVIEWED IN ACCORDANCE WITH K.S.A. 58-2005 ON THIS \_\_\_\_\_ DAY OF \_\_\_\_\_, 2013.

TRICIA L. ROBELLO, LS #1246  
DEPUTY COUNTY SURVEYOR  
SEDGWICK COUNTY KANSAS

THIS PLAT IS APPROVED AND ALL DEDICATIONS SHOWN HEREON, IF ANY, ARE ACCEPTED BY THE CITY COUNCIL OF THE CITY OF WICHITA, KANSAS, THIS \_\_\_\_\_ DAY OF \_\_\_\_\_, 2014.

\_\_\_\_\_, MAYOR  
CARL BREWER  
\_\_\_\_\_, CITY CLERK  
KAREN SUBLETT

ENTERED ON TRANSFER RECORD THIS \_\_\_\_\_ DAY OF \_\_\_\_\_, 2014.

\_\_\_\_\_, COUNTY CLERK  
KELLY ARNOLD  
THIS IS TO CERTIFY THAT THIS INSTRUMENT WAS FILED FOR RECORD IN THE REGISTER OF DEEDS OFFICE AT \_\_\_\_\_, M., ON THE \_\_\_\_\_ DAY OF \_\_\_\_\_, 2014.

\_\_\_\_\_, REGISTER OF DEEDS  
BILL MEEK  
\_\_\_\_\_, DEPUTY  
TONYA BUCKINGHAM

No.	Revision	By	Date
GLEN MEADOWS 2ND ADDITION STORM WATER DRAIN NO. 359			
<b>PLAT</b>			
GARY JANZEN, P.E. - CITY ENGINEER CITY OF WICHITA PROJECT NO. 468-84634			
<b>PEC</b> PROFESSIONAL ENGINEERING CONSULTANTS, P.A. 303 SOUTH TOPEKA WICHITA, KS 67202 316-262-2691 www.pec1.com			
Designed by	BMM	Job No.	35-13438-002
Drawn by	BJS	Date	September 2013
			SH. 03 of 28

Saved 01-28-2014 1:27:34 PM by BJS  
 Plot Scale 1:1 01-28-2014 3:08:28 PM by BJS  
 G:\2013\13438\002\13438-002-C-PLAT