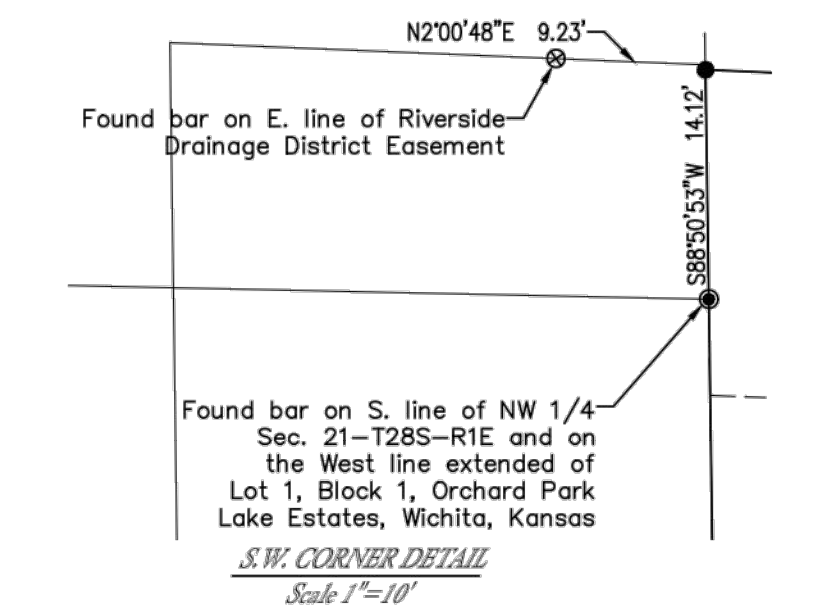


- LEGEND**
- 1 1/2" Pipe Found
 - ⊗ Mooring Bar & Cap Found
 - ▼ Section Corner Found
 - 5/8" Bar w/ Pipe Cap Set

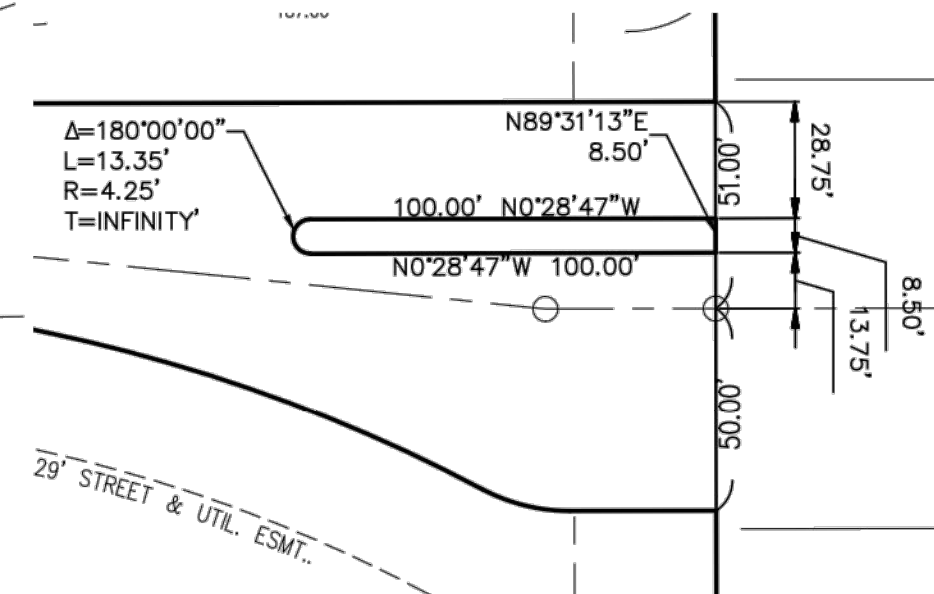
BENCHMARK
 Bench Mark #72
 City of Wichita bench mark disk, 20.7' E. of E. Broadway curb and 41.5' S. of centerline Custy. Elevation 1274.71 NGVD88 (Elevation 86.82 city datum)

Bench Mark #60
 " " cut on S.E. corner of bridge abutment over Riverside Drainage District on 47th St. S. Elevation 1273.80 NAVD88



NOTES

- This plat is subject to the Provisions of Southfork Commercial Addition Community Unit Plan, DP-249 on file with the Metropolitan Area Planning Dept.
- This plat is subject to a drainage plan on file with City Public Works.



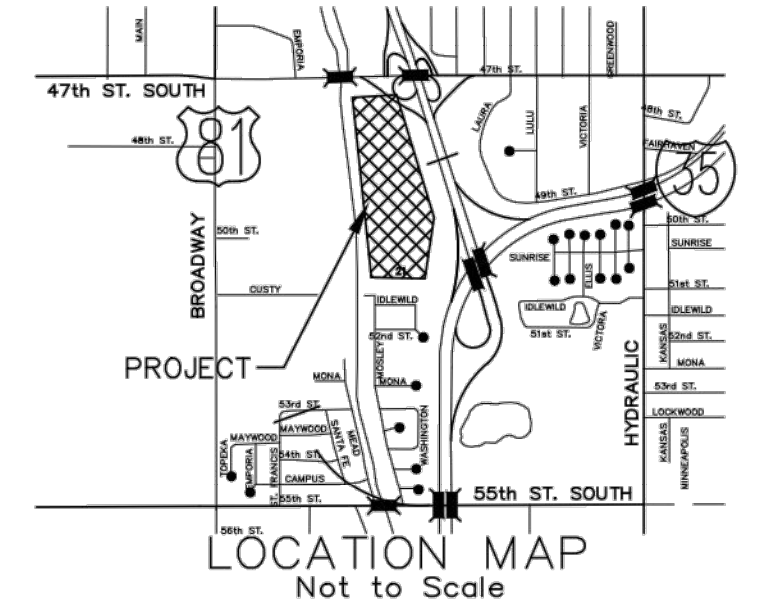
Centerline Line & Curve Table

Line #/Curve #	Length	Direction/Delta	Radius
C20	314.30	42°22'17"	425.00'
C21	207.80	23°48'44"	500.00'
C22	182.56	7°38'06"	1370.00'
L10	155.50'	N0°28'47"W	
L11	42.02'	N0°28'47"W	
L12	164.71'	N5°29'05"E	
L13	71.00'	N84°33'38"E	

Minimum Building Pad Elevation for Lowest Opening into Structures

Lots 1-8, Block 1 1272.0 NAVD88 *

* As approved by the City Stormwater Engineer



ONE STEP FINAL PLAT SOUTHFORK COMMERCIAL ADDITION

TO
 WICHITA, SEDGWICK COUNTY, KANSAS

Date of Preparation: 7/17/2012

POE & ASSOCIATES, INC.
 CONSULTING ENGINEERS
 5940 E. Central, Suite 200 • Wichita, KS 67208-4242
 Phone 316/685-4114 • FAX 316/685-4444

SOUTHFORK ADDITION WATER DISTRIBUTION SYSTEM IMPROVEMENTS PLAT
 CITY OF WICHITA, KANSAS
 GARY JANZEN, P.E. - CITY ENGINEER
 PROJECT NO. 448-90558 OCA NO. (735475)
 POE & ASSOCIATES, INC. CONSULTING ENGINEERS
 5940 E. Central, Suite 200 • Wichita, KS 67208-4242
 Phone 316/685-4114 • FAX 316/685-4444
 LAMOTHY R. KAISER
 LICENSED PROFESSIONAL ENGINEER
 11499
 ENGINEER: S. SERVIS
 DESIGNER: M. TUCKER
 POE JOB NO.: 1858
 DATE: JANUARY 2014
 SHEET 11 OF 11