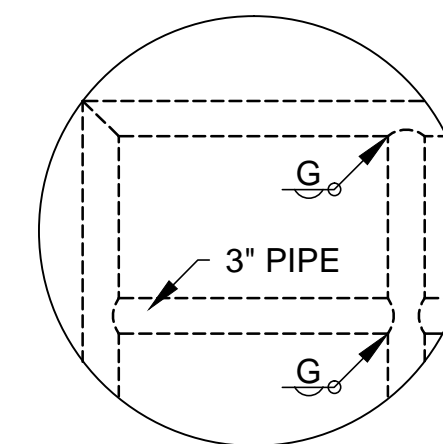


RETAINING WALL NOTES:

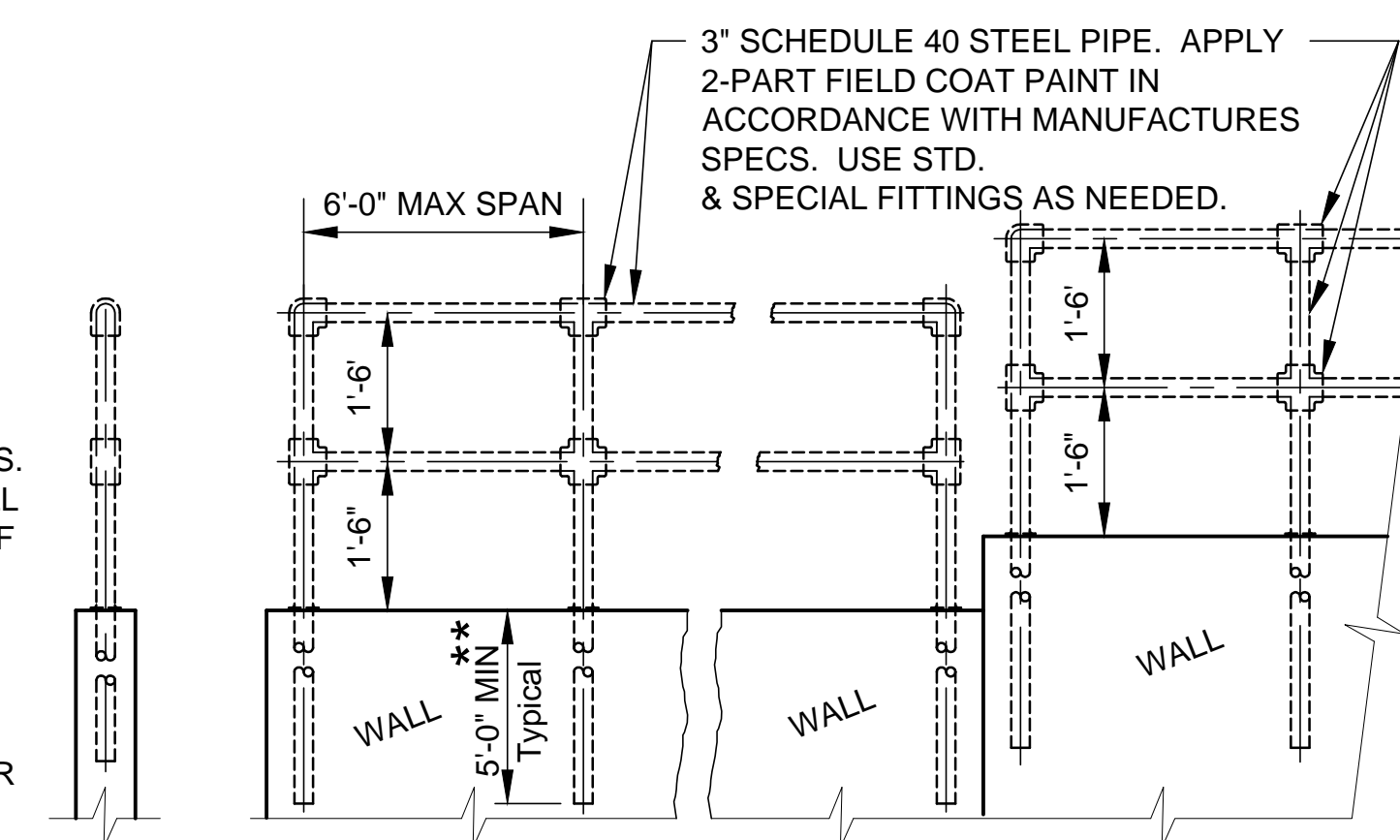
1. Minimum distance from top of curb to top of wall shall be 12".
2. Exposed portions of wall shall be finished face of blocks.
3. Walls shall have a "Cap Block".
4. The precast modular retaining wall shall be by Stone Strong or pre-approved product. No non-gravity, pre-cast retaining wall systems that require soil reinforcement or, blocks smaller than 6,000 lb or, depth greater than 44 inches or, fails to contain inner cores or cells, or does not include a molded granite face or, is cast-in-place, shall be considered equal products.
5. The contractor shall be required to purchase and stockpile at an approved location any and all pre-cast blocks that are presently located on the site if another wall system is proposed.
6. The contractor shall follow the manufacturer's recommendations. The manufacturer's specifications can be found at www.stonestrong.com.
7. The local licensee for the manufacturer is Lies Ready-Mix, Kingman, KS 316-641-0641.
8. The Contractor shall maintain a minimum bury depth of 9 inches between the design fill grade at the front of the wall and the bottom of the wall.
9. The bid price for the retaining wall shall include all work, material and other items as necessary to complete the wall per the intent of the plans and specifications.
10. Contact Information:
Stone Strong
John Gran or Bob Lewis
877.501.5652



ALTERNATE DETAIL
(USING WELDED CONNECTIONS ON PIPE HANDRAIL)

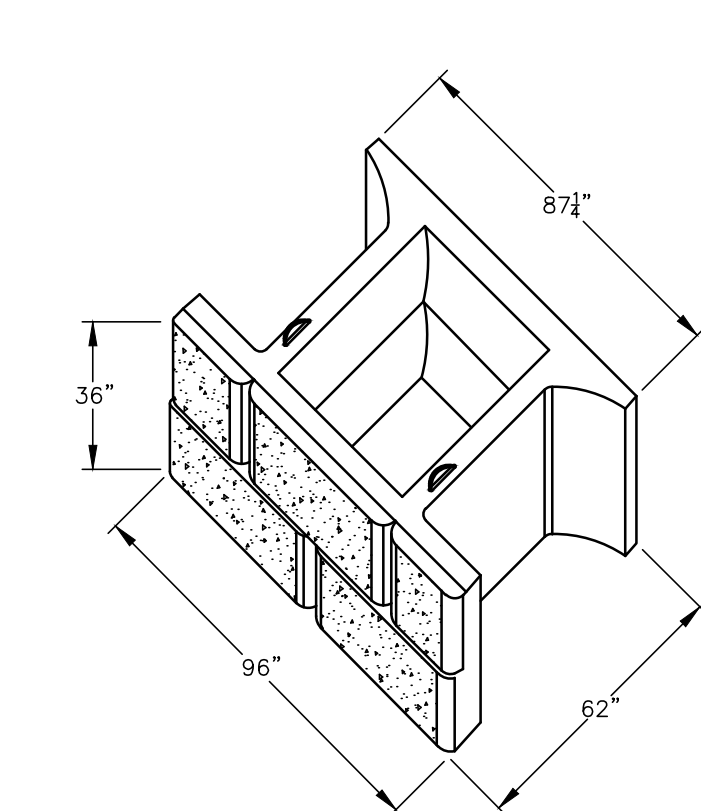
HANDRAIL NOTES:

1. PIPE HANDRAIL SHALL BE PLACED THE LENGTH OF THE TOP OF RETAINING WALLS (APPROX. 528 L.F.).
2. WELDED CONNECTIONS MAY BE USED FOR PIPE HANDRAILS. WELDED CONNECTIONS SHALL BE THOROUGHLY CLEANED OF ALL LOOSE SCALE, GROUND SMOOTH AND PAINTED.
3. SHOP DETAILS FOR ALL PIPE HANDRAILS SHALL BE SUBMITTED TO ENGINEER FOR APPROVAL.

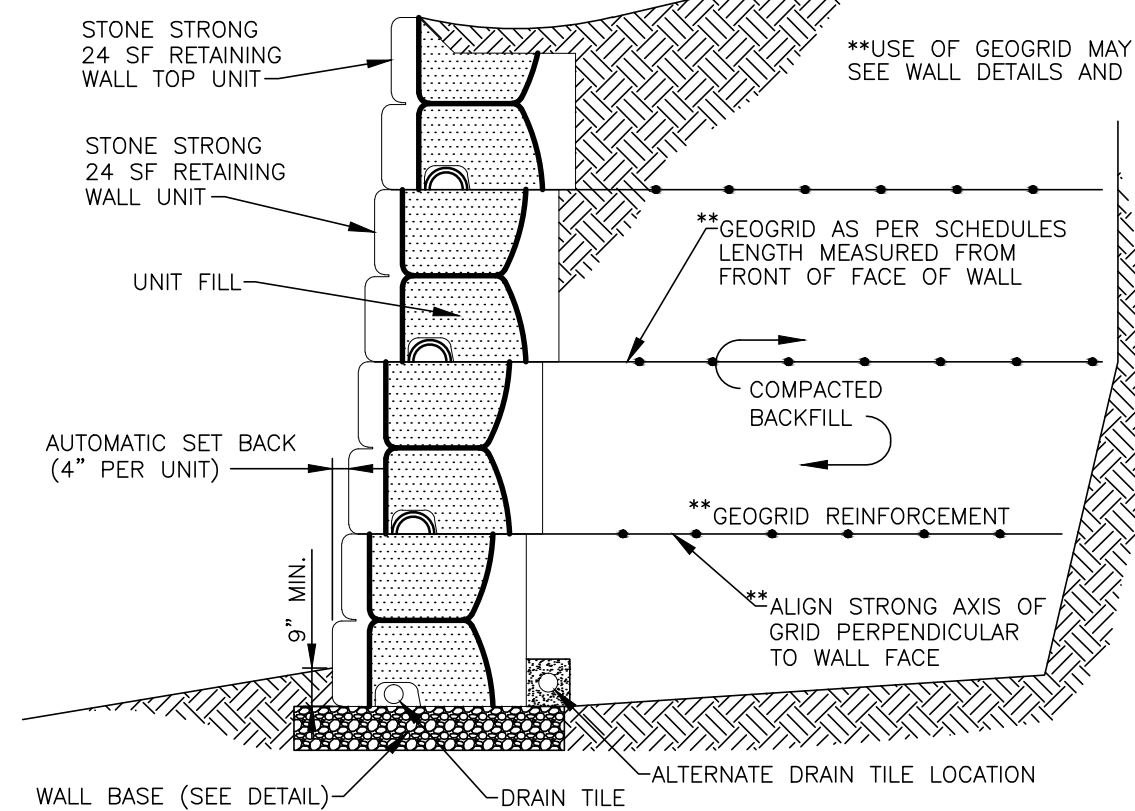


TYPICAL ELEVATION OF HANDRAIL

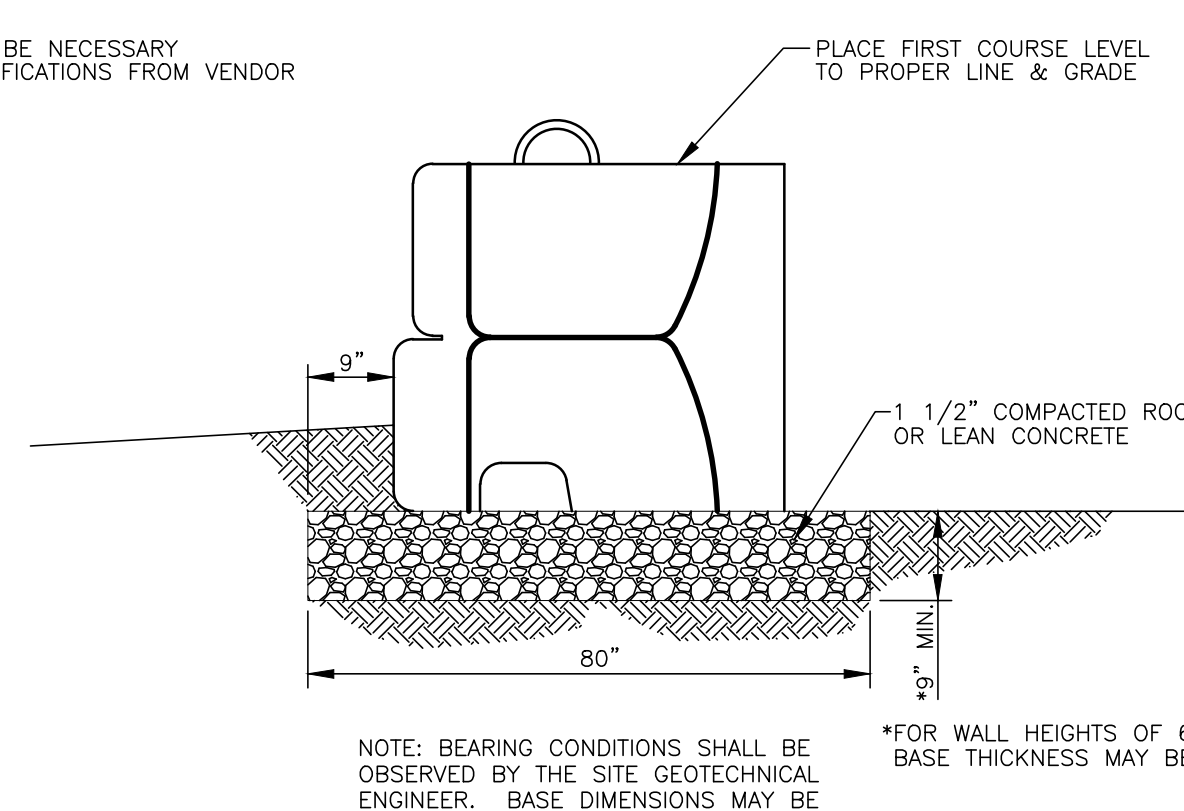
** PIPE HANDRAIL SHALL BE EMBEDDED 5' (MIN.) IN WALL GRAVEL



STONE STRONG 24-62 UNIT
NOT TO SCALE



24 SF REINFORCED WALL CROSS SECTION
NOT TO SCALE

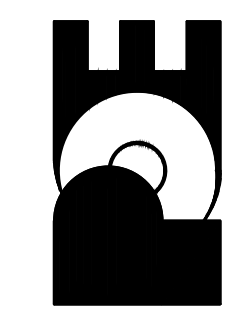


24 SF WALL BASE
NOT TO SCALE

| No. | Date | By | Approved | Revision |
|-----|------|----|----------|----------|
| | | | | |

SOUTHFORK COMMERCIAL ADDITION
PAVING & DRAINAGE IMPROVEMENTS
RETAINING WALL DETAILS
CITY OF WICHITA, KANSAS
GARY JANZEN, P.E. - CITY ENGINEER
PROJECT NO. 468-84826 OCA NO. (751507)
PROJECT NO. 472-85050 OCA NO. (766279)

POE & ASSOCIATES, INC.
CONSULTING ENGINEERS
5940 E. Central, Suite 200 ■ Wichita, KS 67208-4242
Phone 316.685-1111 ■ FAX 316.685-4444



FINAL
Engineer: T. AUSTIN
Designer: M. TUCKER
Poe Job No.: 1558
Date: JANUARY 2014