

Scale: 1" = 60'
 • = Iron

EROSION CONTROL MEASURE	INSTALL	MAINTAIN	REMOVE
BACK OF CURB PROTECTION (LF)	1725	0	0
CONSTRUCTION ENTRANCE (EA)	0	1	1
CURB INLET BARRIER (EA)	2	2	0
DITCH CHECK (EA)	0	0	0
DROP INLET PROTECTION (EA)	5	0	0
EROSION CONTROL (LS)	0	0	0
EROSION CONTROL BERM (LF)	0	0	0
SILT FENCE (LF)	0	0	0
EROSION CONTROL MAT (SY)	0	0	0

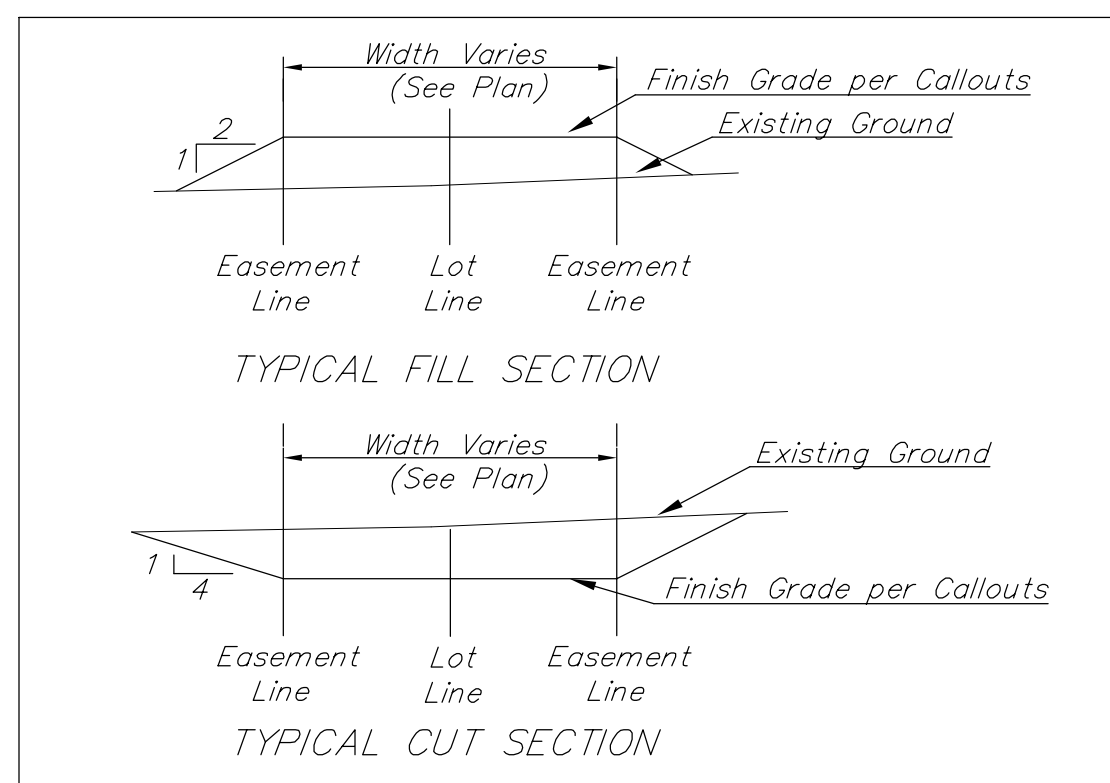
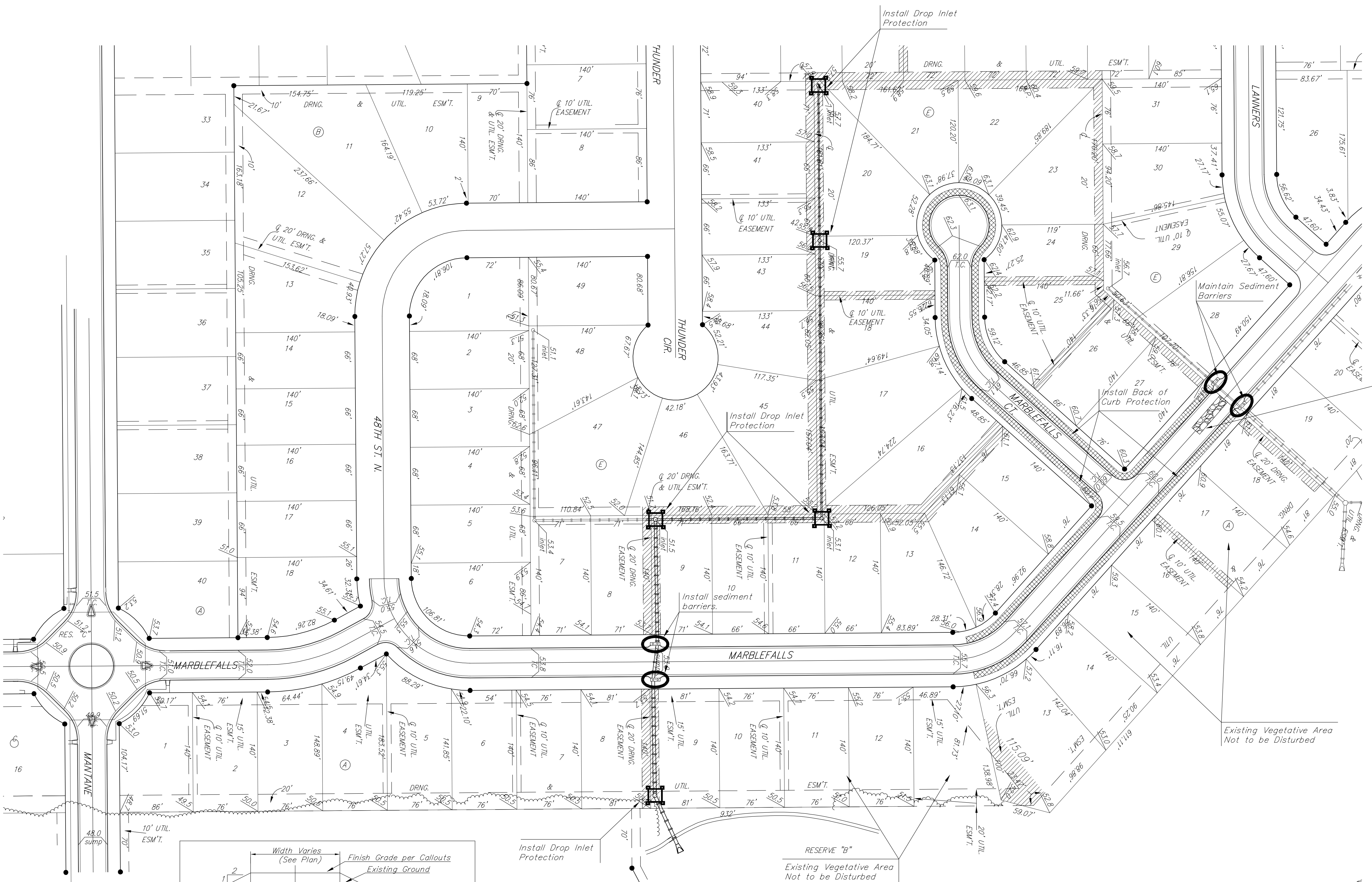
Quantities are for information only, contractor shall verify quantities per final bid quantity sheet.
 * All existing BMPs including Construction Entrance and Sediment Barriers shall be maintained and repaired if necessary. Replacement or removal of erosion control measures to be paid for by L.S. Bid item "Maintain Existing Erosion Control BMPs"

Maintain 50'x12' Gravel Construction Entrance. Remove as Necessary for Street Construction

EROSION CONTROL PLAN LEGEND
 (Installation Details Found on Sheets X-X)

- CONSTRUCTION ENTRANCE
- DROP INLET PROTECTION
- CURB INLET PROTECTION
- STRAW BALE BARRIERS
- SILT FENCING
- EARTH DIKES
- BACK OF CURB PROTECTION
- AREA TO BE GRADED

NO SCALE



Area to be graded $\frac{1}{4}$ " Proposed Grades

Approximate Quantities: (for information only)
 393 C.Y. Cut 430 C.Y. Fill

The Contractor shall fill and grade the easements as shown to the elevations given on the easement grading plan. All costs for grading shall be incidental to the Easement Grading Bid Item. The Contractor shall 'straight' grade the easements between the elevations given. Where a callout designates 'Match', the contractor will grade to the existing ground elevation.



Baughman FALCON FALLS 2ND ADD. - PH. II
 EROSION CONTROL/
 ESM.T. GRADING PLAN

Baughman Company, P.A. 315 Ellis St. Wichita, KS 67211 P 316.262.7271 F 316.262.0149
 ENGINEERING | SURVEYING | PLANNING | LANDSCAPE ARCHITECTURE

PROJECT NUMBER	DESIGN TNT	DRAWN TNT
REVISIONS	APPROVED	DATE 01/14
	SCALE Noted	SHEET 17 OF 27

Falcon Falls 2nd Ph 3 Str E C Plan