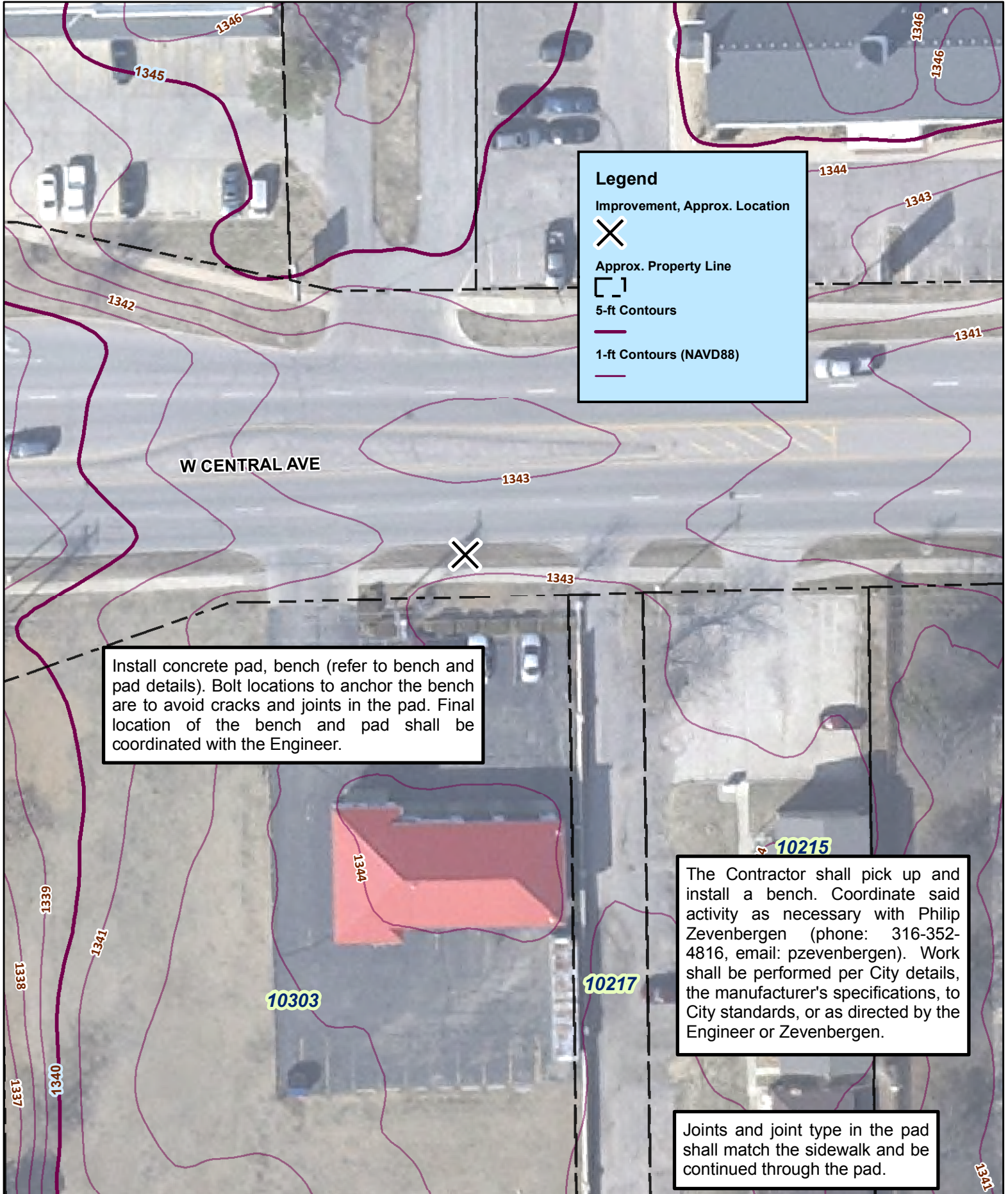


SE of Central and Maize - 10303 W Central Ave



Attachment A - 472-85156 Bench and Shelter Installation, West Side Service, Wichita, KS



Legend

- Improvement, Approx. Location
- X
- Approx. Property Line
- []
- 5-ft Contours
-
- 1-ft Contours (NAVD88)
-

Install concrete pad, bench (refer to bench and pad details). Bolt locations to anchor the bench are to avoid cracks and joints in the pad. Final location of the bench and pad shall be coordinated with the Engineer.

The Contractor shall pick up and install a bench. Coordinate said activity as necessary with Philip Zevenbergen (phone: 316-352-4816, email: pzevenbergen). Work shall be performed per City details, the manufacturer's specifications, to City standards, or as directed by the Engineer or Zevenbergen.

Joints and joint type in the pad shall match the sidewalk and be continued through the pad.

W CENTRAL AVE

10303

10217

10215

1344

1343

1343

1343

1341

1344

1345

1346

1346

1346

1342

1339

1341

1338

1340

1337

1341