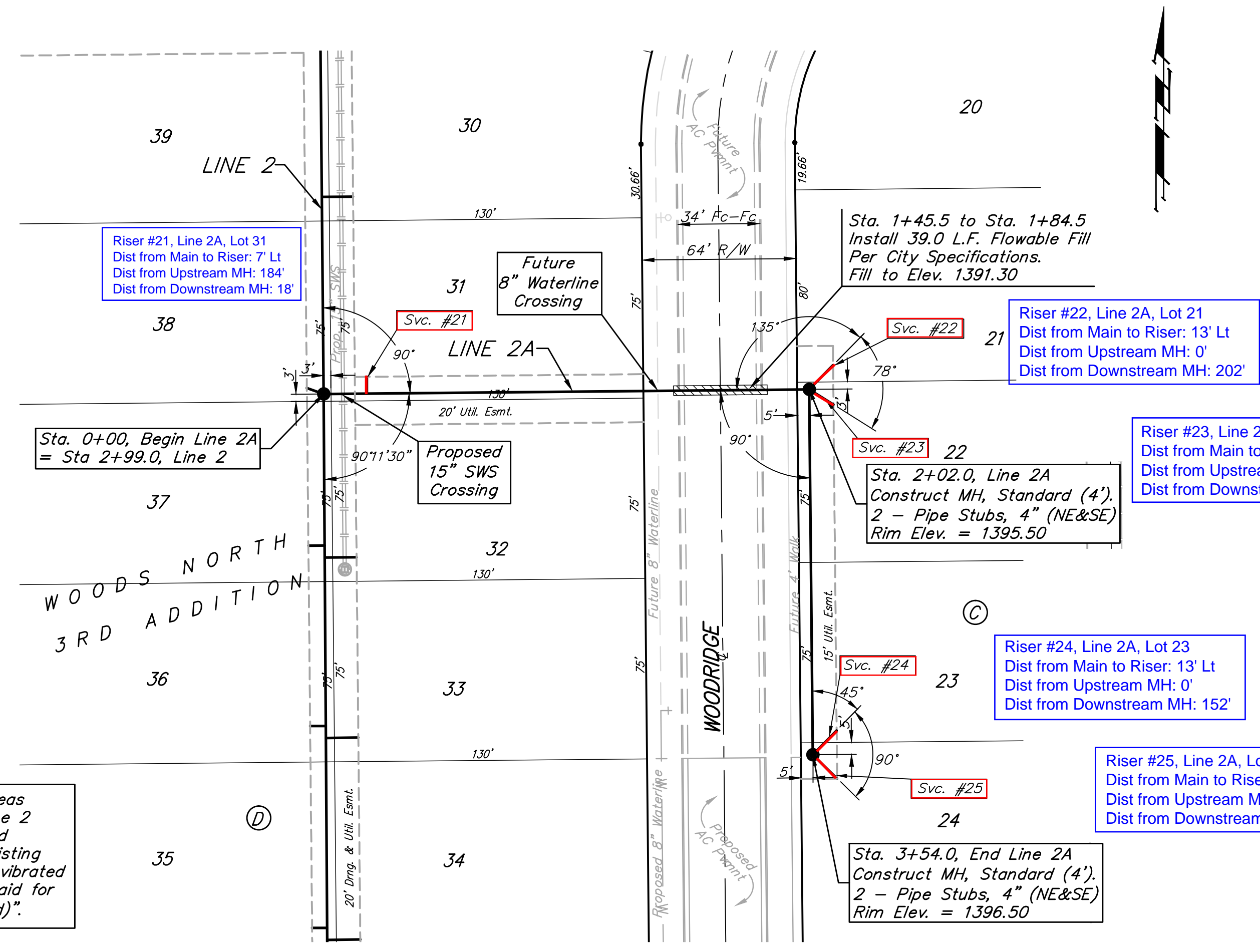


BENCHMARKS:
 BM #1: "□" cut in top of curb near intersection of 27th Street North & Woodridge, south of SE corner of Lot 24, Block C, Woods North 3rd Addition.
 Elev. = 1392.97 NGVD29

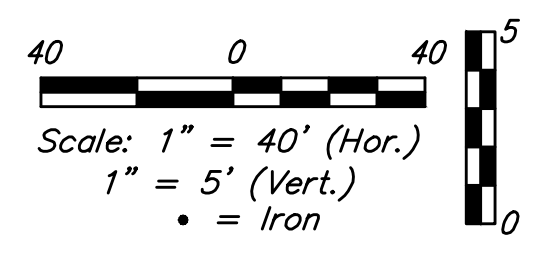
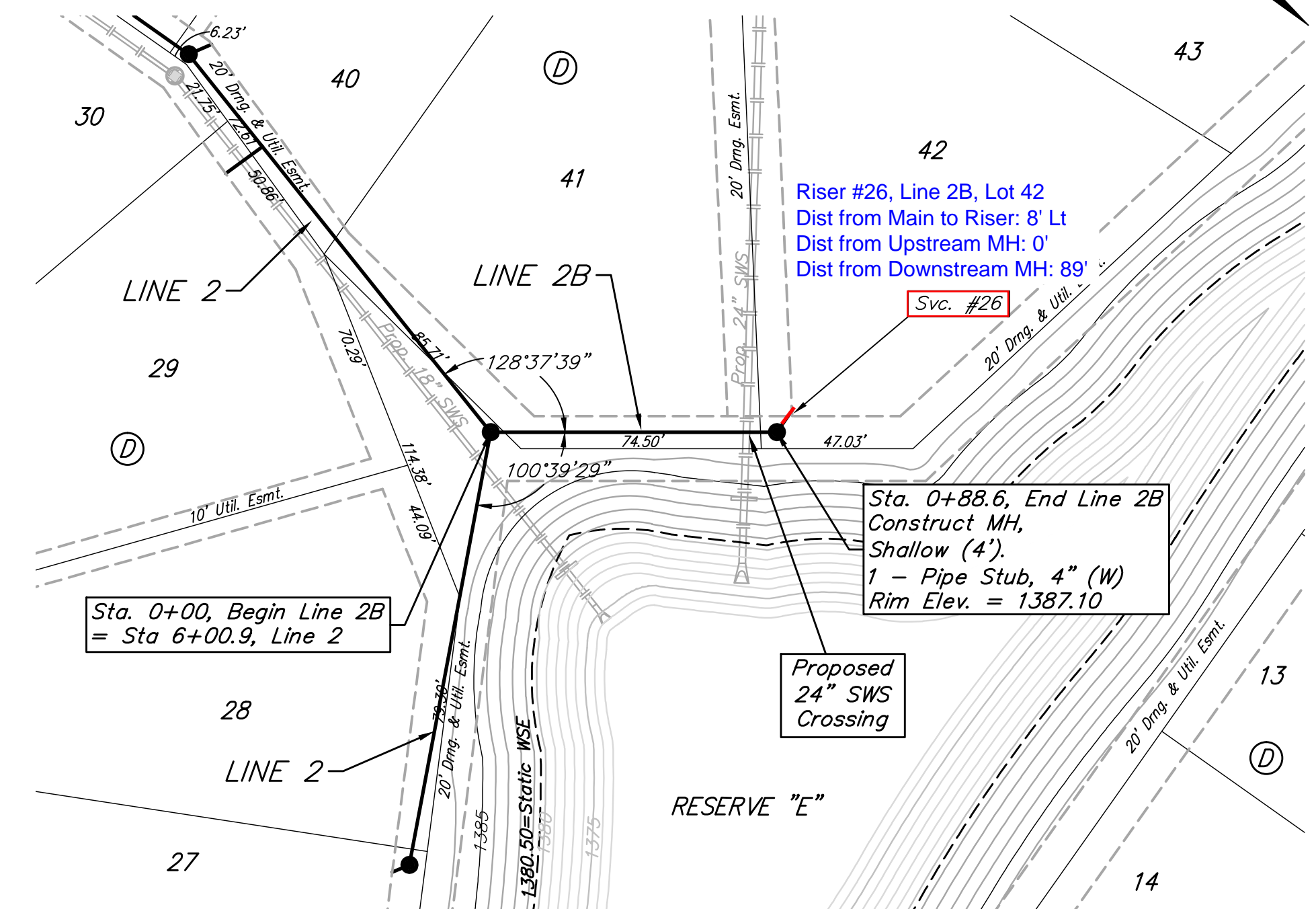
BM #2: "□" cut in top of curb near intersection of Woodridge Court & Woodridge, south of SE corner of Lot 6, Block A, Woods North 3rd Addition.
 Elev. = 1390.10 NGVD29



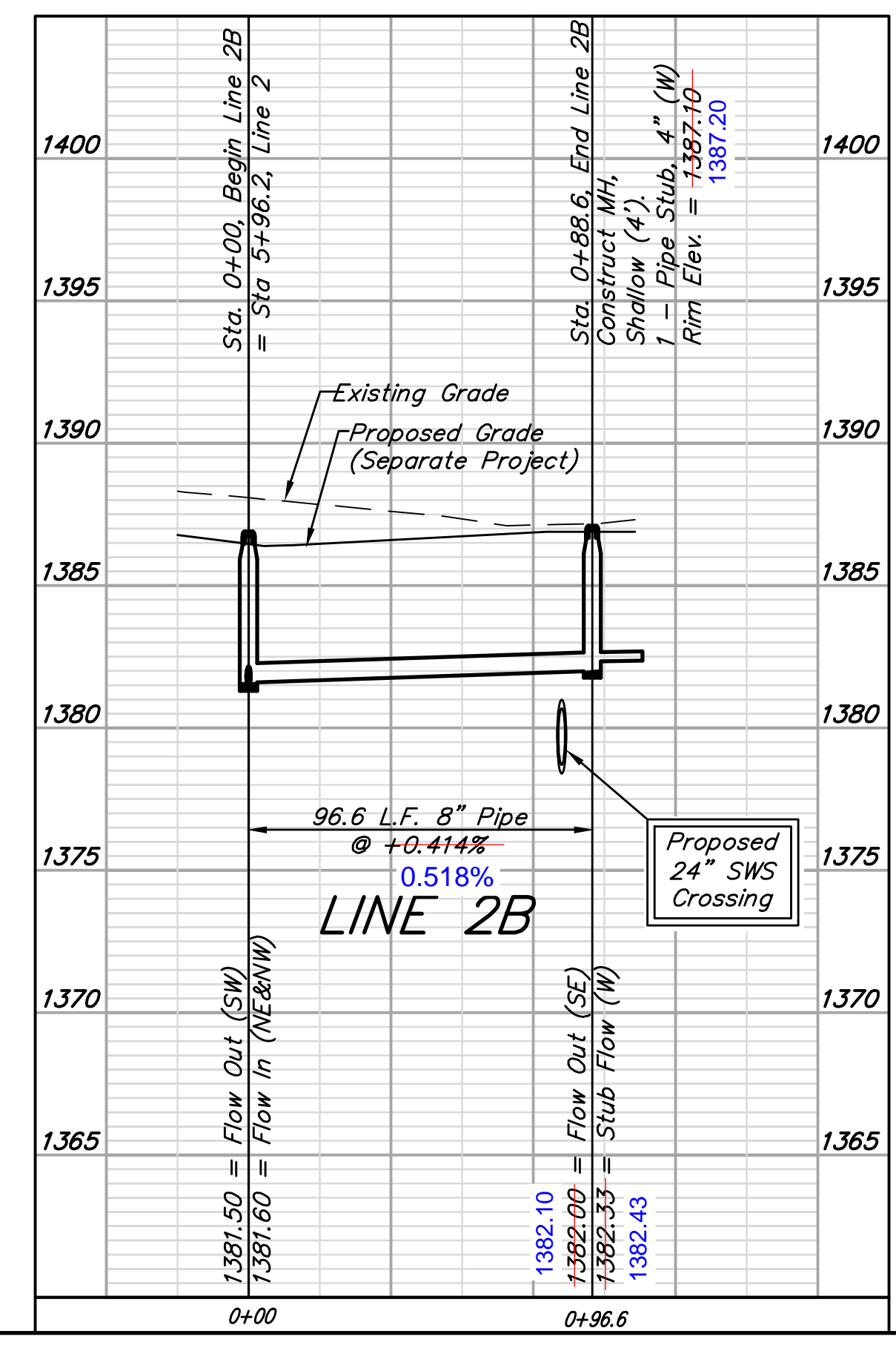
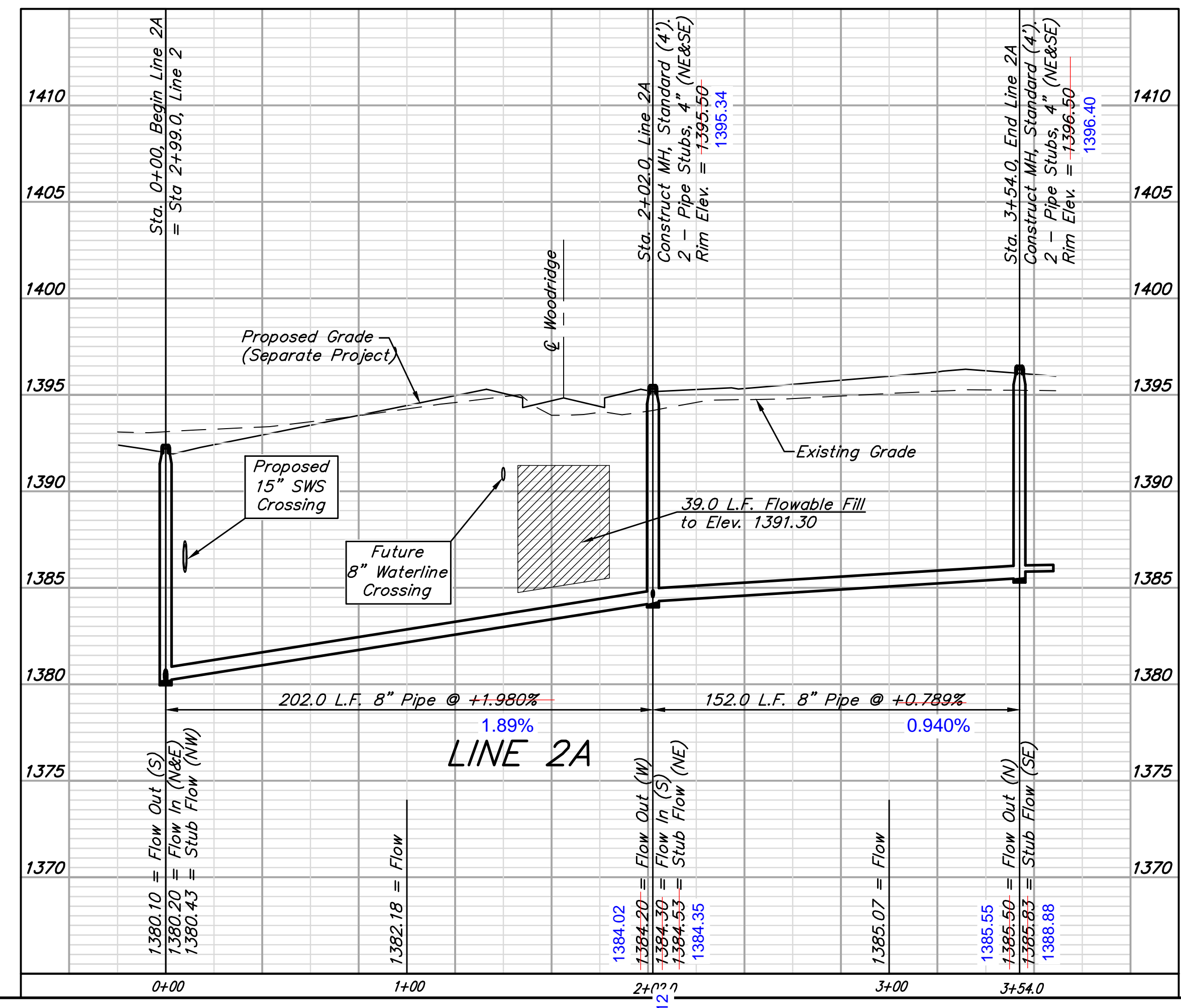
SEWER SERVICE TABLE

NUMBER	TYPE	LOCATION				FOR INFORMATION ONLY	
		LOT NO.	BLOCK NO.	LINE	STATION \ DIRECTION	APPROXIMATE LENGTH 4" PIPE	VERTICAL
21	8" X 4" Tee	31	D	2A	0+18.0/Lt.	8.0'	7.0'
22	4" Stub	21	C	2A	2+02.0/Lt.	-	14.0'
23	4" Stub	22	C	2A	2+02.0/Lt.	-	14.0'
24	4" Stub	23	C	2A	3+54.0/Lt.	-	14.0'
25	4" Stub	24	C	2A	3+54.0/Lt.	-	14.0'
26	4" Stub	42	D	2B	0+88.9/Lt.	-	8.0'

NOTE: Vertical Riser Pipe shall be extended to 2' minimum above ground water elevation and 4' maximum below proposed ground elevation.



All trench and manhole excavation areas from Sta. 2+02.0 to Sta. 3+54.0, Line 2 shall be backfilled with sand. The sand backfill shall be within two feet of existing grade and shall be water-jetted and vibrated during backfilling. All costs shall be paid for as L.F. "Fill, Sand (Flushed & Vibrated)".



Baughman Woods North 3rd Addition - Phase II
LINES 2A & 2B
 Lateral 430, Four Mile Creek

Baughman Company, P.A. 315 Ellis St. Wichita, KS 67211 P 316-262-7171 F 316-262-0149
 ENGINEERING | SURVEYING | PLANNING | LANDSCAPE ARCHITECTURE

PROJECT NUMBER 468-84822	DESIGN AEG	DRAWN TMS
REVISIONS:	APPROVED	DATE 9/23/13
	SCALE Noted	SHEET 4 OF 14

E:\Projects\Woods North 3rd 11-12-13\Engineering\Phase 2\SS 13-08-0943\SS 13-08-0943 Plans.dwg