

LATERAL 5, MAIN 18, FOUR MILE CREEK SEWER SANITARY SEWER EXTENSION

Lots 1 - 8, Block 1; Lots 10 - 16, Block 2

TARA CREEK

PROJECT NO. 468-84363

O.C.A. NO. 744359

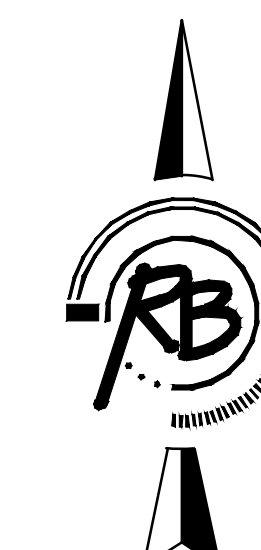
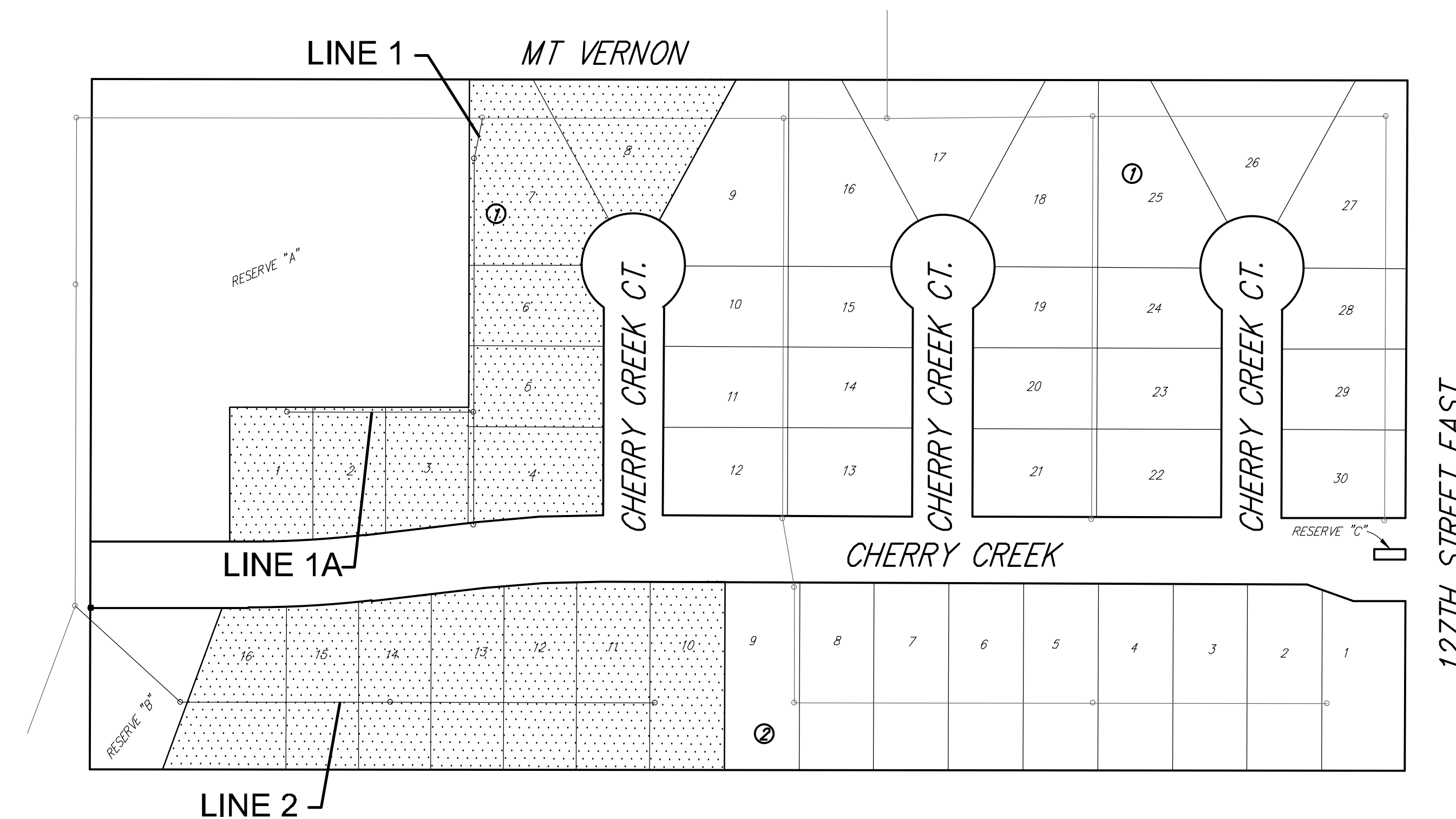
Duling Construction - Contractor
J. Wagner - City of Wichita, Field Project Engineer
G. Steinle - City of Wichita, Inspector
As-built
Release Date: 3/11/2014
pdf: APRosas 5/28/2014

GENERAL NOTES

- Contractor will be required to provide a minimum advance notice of seventy-two hours (72) to utility companies prior to starting any excavation as follows:
Kansas One-Call 1-800-DIG SAFE
The Contractor must notify the following in case of an emergency:
Cox Communications 262-0661
Kansas Gas Service 383-8600
Westar 383-8600
City of Wichita Water Department 262-6000
City of Wichita Sewer Maintenance 262-6000
- Underground utility service lines and overhead utility pole lines are to be adjusted as necessary by others prior to construction unless the plans specifically call for their adjustment by the Contractor or unless the plans specifically identify a utility to be adjusted by its owner during construction. Existing utilities and their location, as shown on the plans, represent the best information obtainable for design. Location information has been obtained from the various utility companies and is either from company record drawings or company-provided field locations. The Contractor will be required to work around existing utilities within the right-of-way which do not conflict with proposed construction.
- Rubble from the removal of miscellaneous structures and excess excavation which is to be wasted shall be disposed of on sites to be provided by the Contractor. These sites shall be approved by the Engineer as to suitability, appearance and site location. Locations that, in the opinion of the Engineer, will leave an unsightly appearance will not be approved.
- All disposal sites must be approved by the Kansas Department of Health and Environment. Material either stockpiled or disposed of in a flood plain would require a Kansas State Board of Agriculture permit. Any material dumped in waters of the United States or wetlands is subject to U.S. Corps permitting regulations. Any material buried or stockpiled beyond approved of Engineers construction limits would require additional archeological investigations unless buried in a previously approved borrow location.
- The Engineer shall take field ties to all quarter section corners. The Contractor shall set a City survey monument in the required location where such quarter section corners fall within the limits of pavement construction. Survey monuments will be furnished by the City. The Engineer will accurately locate and install the iron at the quarter section corner. This work will not be paid for directly, but shall be considered subsidiary to the other pay items of work in the contract.
- The Contractor shall give all property owners and/or tenants of developed property directly abutting the construction of this project a minimum of ten (10) days advance notice prior to start of construction.
- All waste areas for excess cut must be approved by the engineer. All excess material is to remain on site.
- The Contractor shall seed, fertilize and mulch all disturbed areas upon completion of construction. Seeding shall be incidental to the bid item for "Project Seeding". Reserves 'A' and 'B' shall be 'Permanent Seeding', all other areas may be 'Temporary Seeding'.
- The Contractor shall adjust Water Valve Boxes and Fire Hydrants as directed by the Engineer at the price bid for said adjustments. The Water Department shall field locate water valves one time during construction when requested by the Contractor. It shall be the Contractor's responsibility to preserve such field locations during the construction process. Water valves, water valve boxes or fire hydrants damaged during construction shall be repaired by the Contractor at his own expense.
- Underground utility service lines and overhead utility pole lines are to be adjusted as necessary by others prior to construction unless the plans specifically call for their adjustment by the Contractor or unless the plans specifically identify a utility to be adjusted by its owner during construction. Existing utilities and their location, as shown on the plans, represent the best information obtainable for design. Location information has been obtained from the various utility companies and is either from company record drawings or company-provided field locations. The Contractor will be required to work around existing utilities within the right-of-way which do not conflict with proposed construction.
- Trees and shrubs in public right-of-way which are in direct conflict with proposed new construction shall be removed by the Contractor with the Engineer's approval. Trees and shrubs which are not in direct conflict with proposed new construction shall be saved and protected from damage.

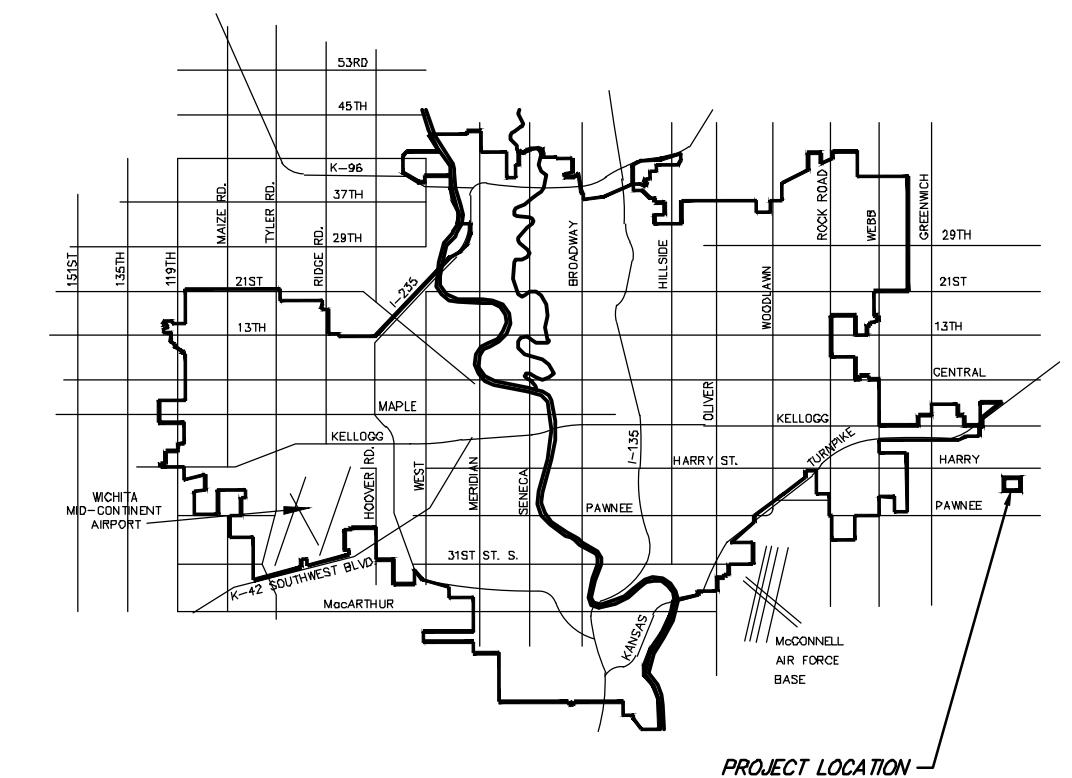
BENCH MARKS

SRB BRASS DISC 55.45' E. & 5.13' S. OF THE N.W.
COR., SW 1/4, SEC. 35, T27S, R2E.
ELEV. = 1348.35 (NGVD 29)

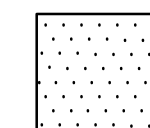


INDEX OF SHEETS

- TITLE SHEET
- LINE 1 & 1A PLAN/PROFILE
- LINE 2 PLAN/PROFILE
- EASEMENT GRADING PLAN
- MANHOLE RING AND COVER DETAILS
- TYPE 'P' MANHOLE DETAIL
- EROSION CONTROL PLAN
- EROSION CONTROL BMPs
- COORDINATE MAP
- FINAL PLAT



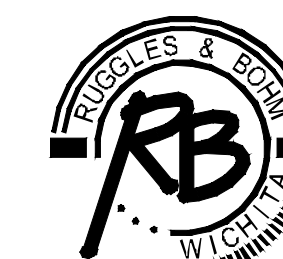
VICINITY MAP



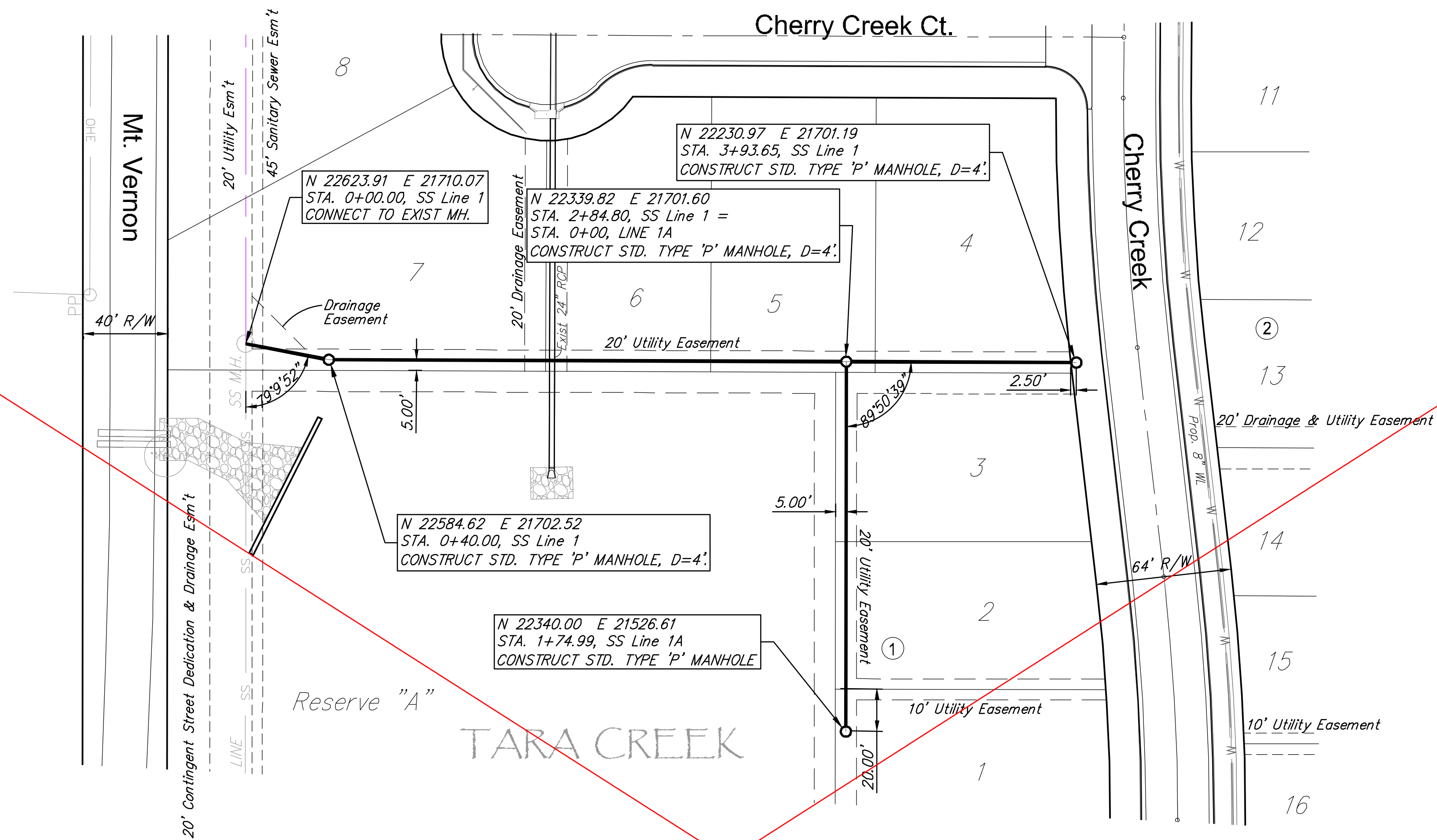
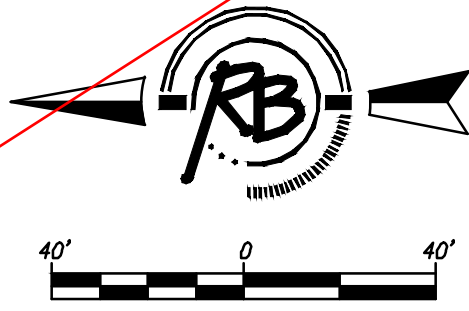
IMPROVEMENT DISTRICT



CITY OF WICHITA, KANSAS
JAMES ARMOUR, P.E. - CITY ENGINEER

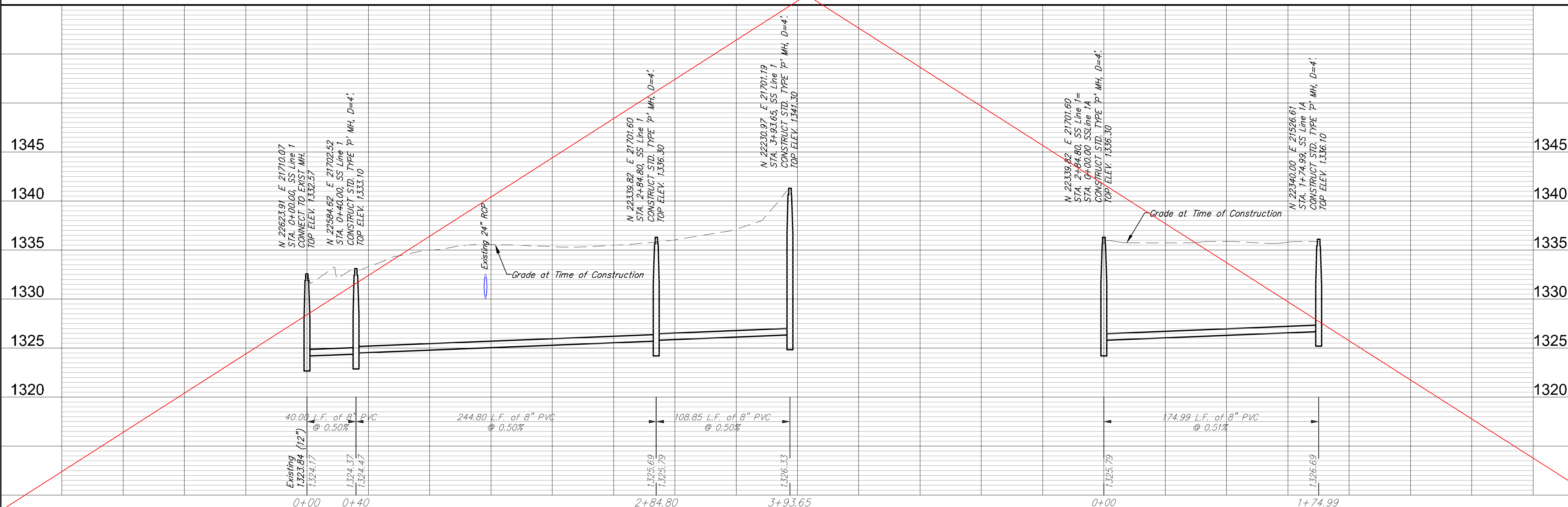


Ruggles & Bohm, P.A.
Engineering, Surveying, Land Planning
924 North Main (316) 264-8008
Wichita, Kansas 67203 (316) 264-4621 fax
www.rbkansas.com E-mail: info@rbkansas.com



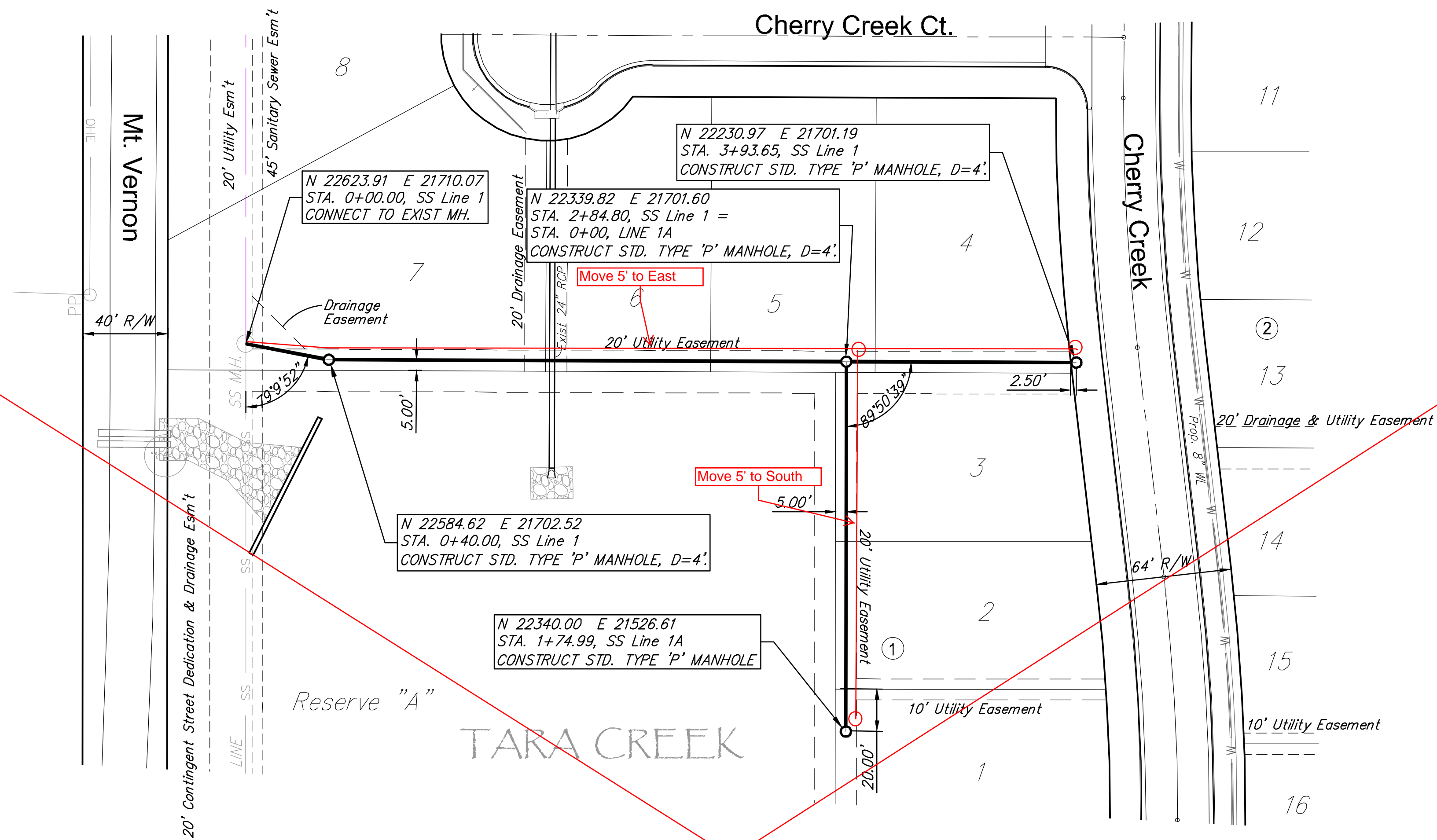
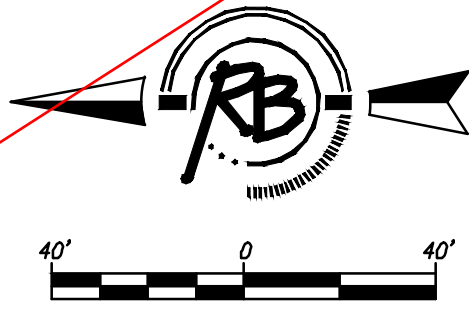
Note: SS Line moved due to conflict with sprinkler systems

SEE REVISED SHEET



DESIGN	AWL	UTILITY
DRAWN	AWL	DATE
REVIEW	AWL	Sept. 27, 2007
PROJECT NUMBER	468-84-363	DRAWING FILE
PROJECT NAME	TARA CREEK ADDITION	LINE 1 & line 1A
PROJECT LOCATION	WICHITA, KANSAS	Eng base 302 SS Line 1-1A

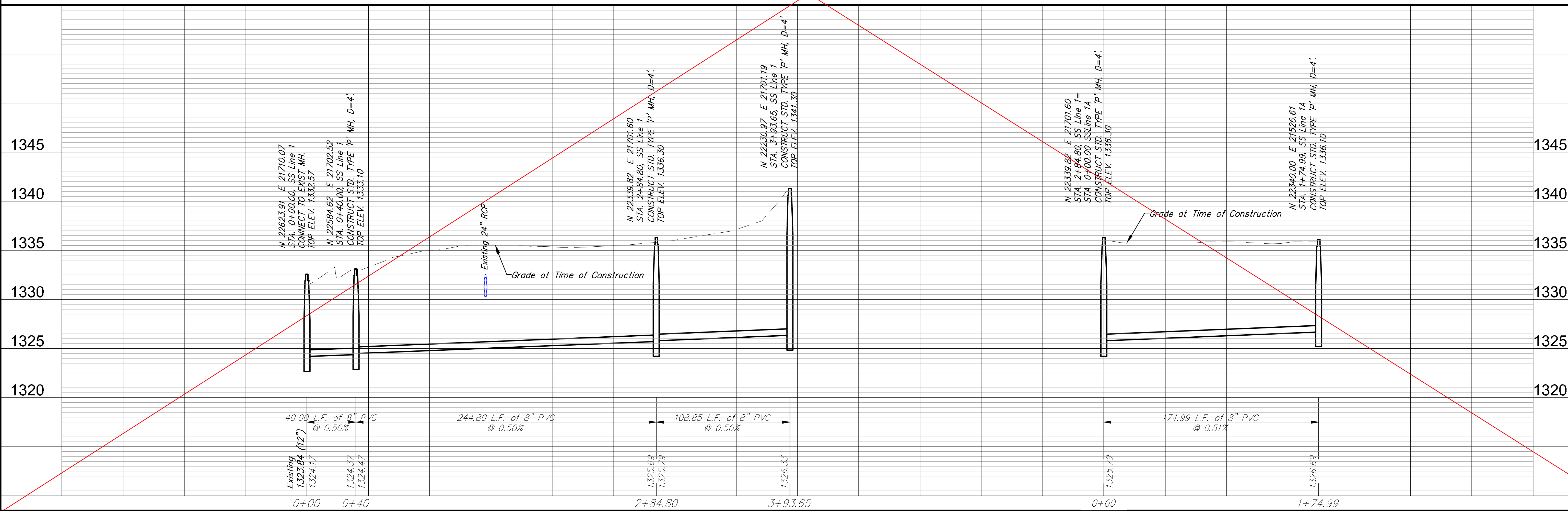
REVISION	NO.	DATE
1	2	14



Note: SS Line moved due to conflict with sprinkler systems

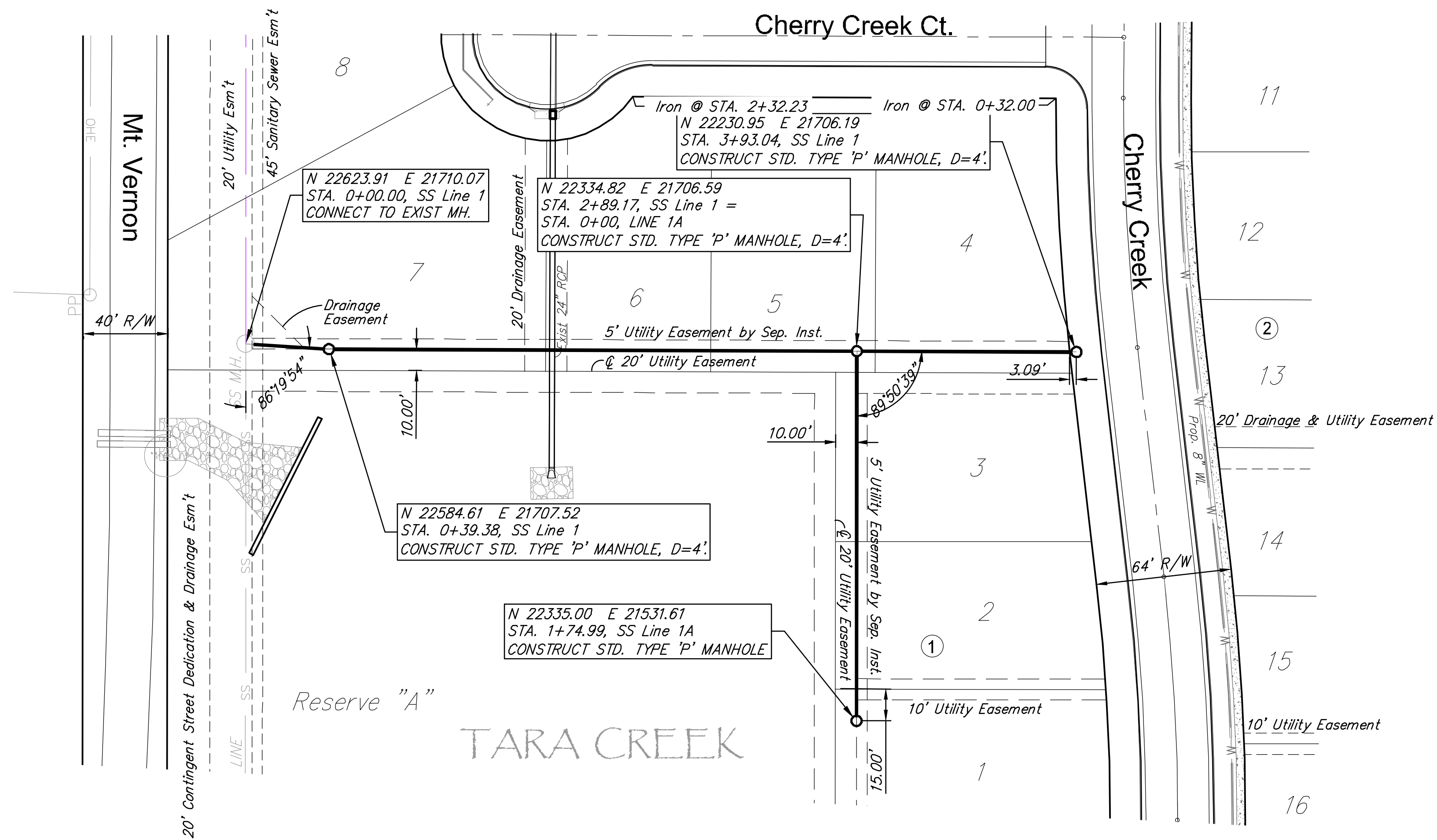
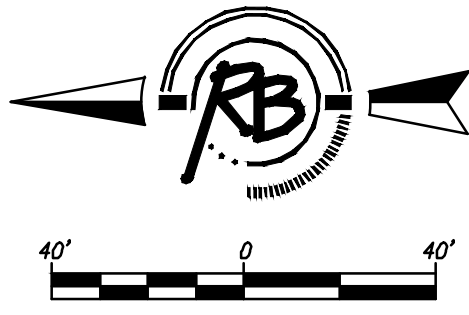
SEE REVISED SHEET

Proposed Revision

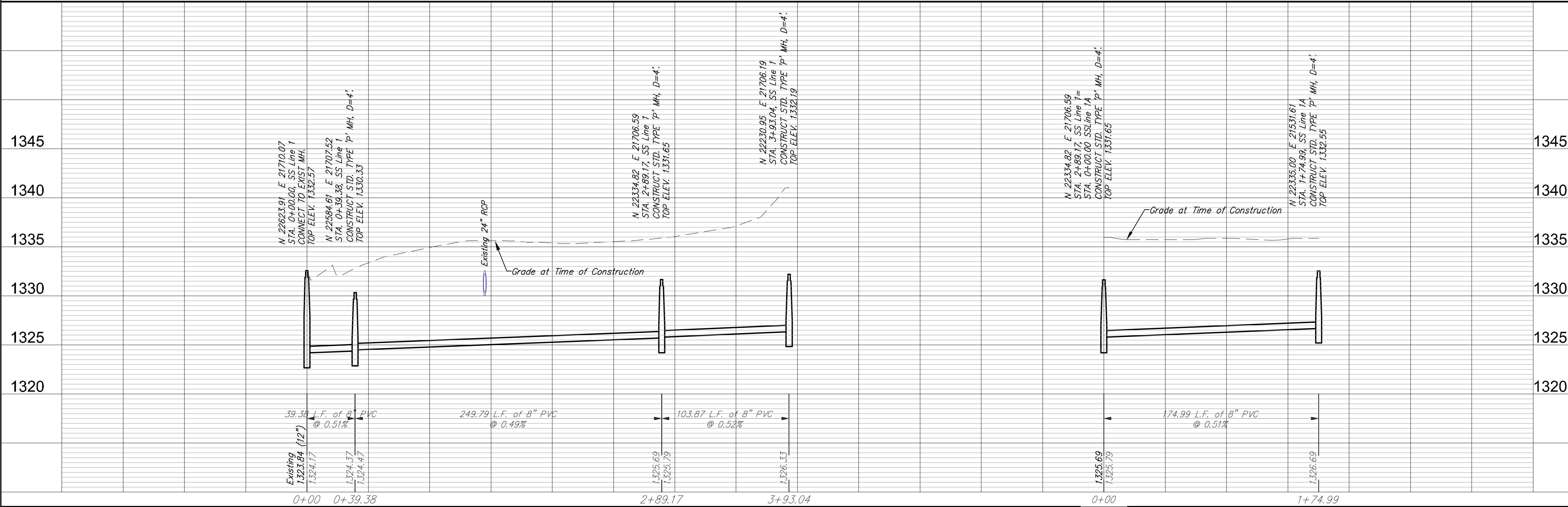


DESIGN	AWL	UTILITY	DATE	REVIEW
PROJECT NUMBER	468-84-363	DRAWING FILE	Eng base 302 SS Line 1-1A	
REVISION	AWL	DATE	REVIEW	
		Sept. 27, 2007		

TARA CREEK ADDITION	14
LINE 1 & line 1A	2
WICHITA, KANSAS	14

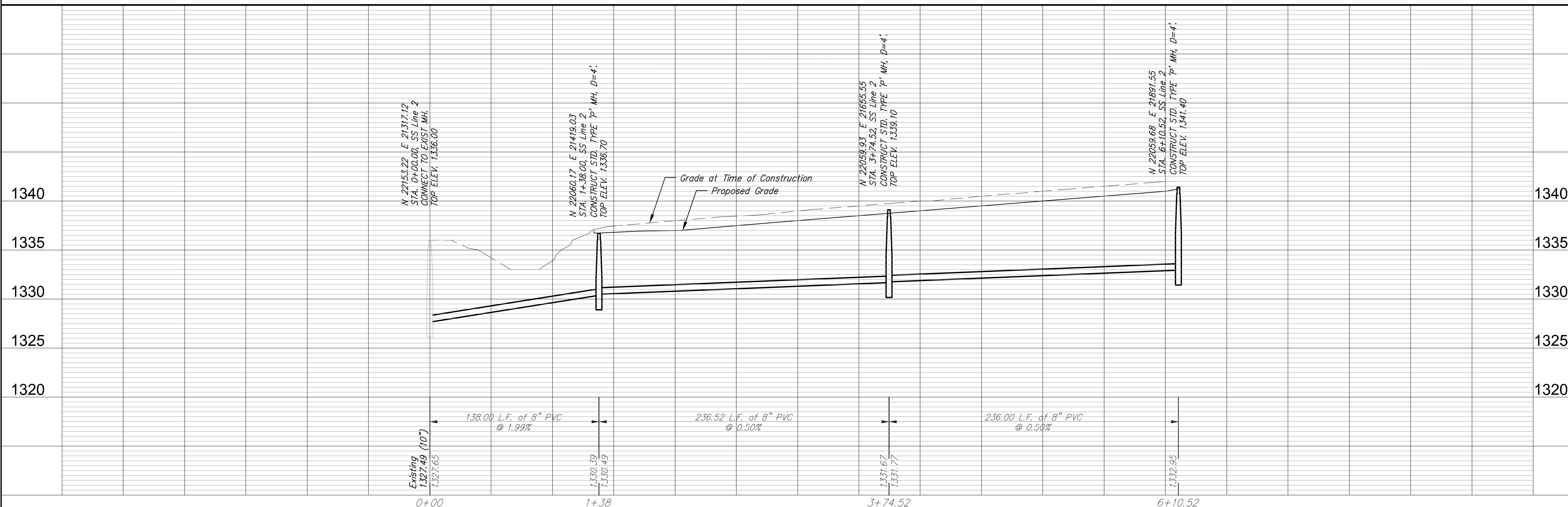
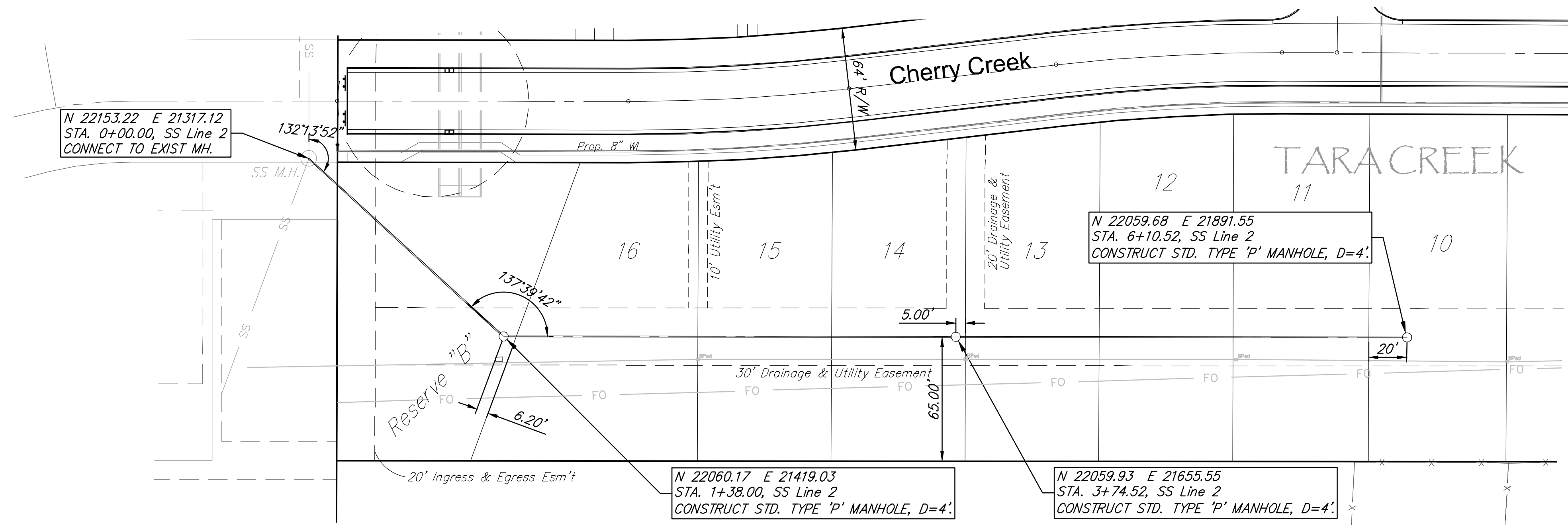


Revised: Jan. 21, 2014



DESIGN	AML	UTILITY
DRAWN	AML	DATE
REVIEW	AML	DATE
Sept. 27, 2007		

PROJECT NUMBER	468-84-363
DRAWING FILE	Eng base 302 SS Line 1-1A
TARA CREEK ADDITION	
LINE 1 & line 1A	
WICHITA, KANSAS	
RS JOB	41877
SHEET	2
OF	14



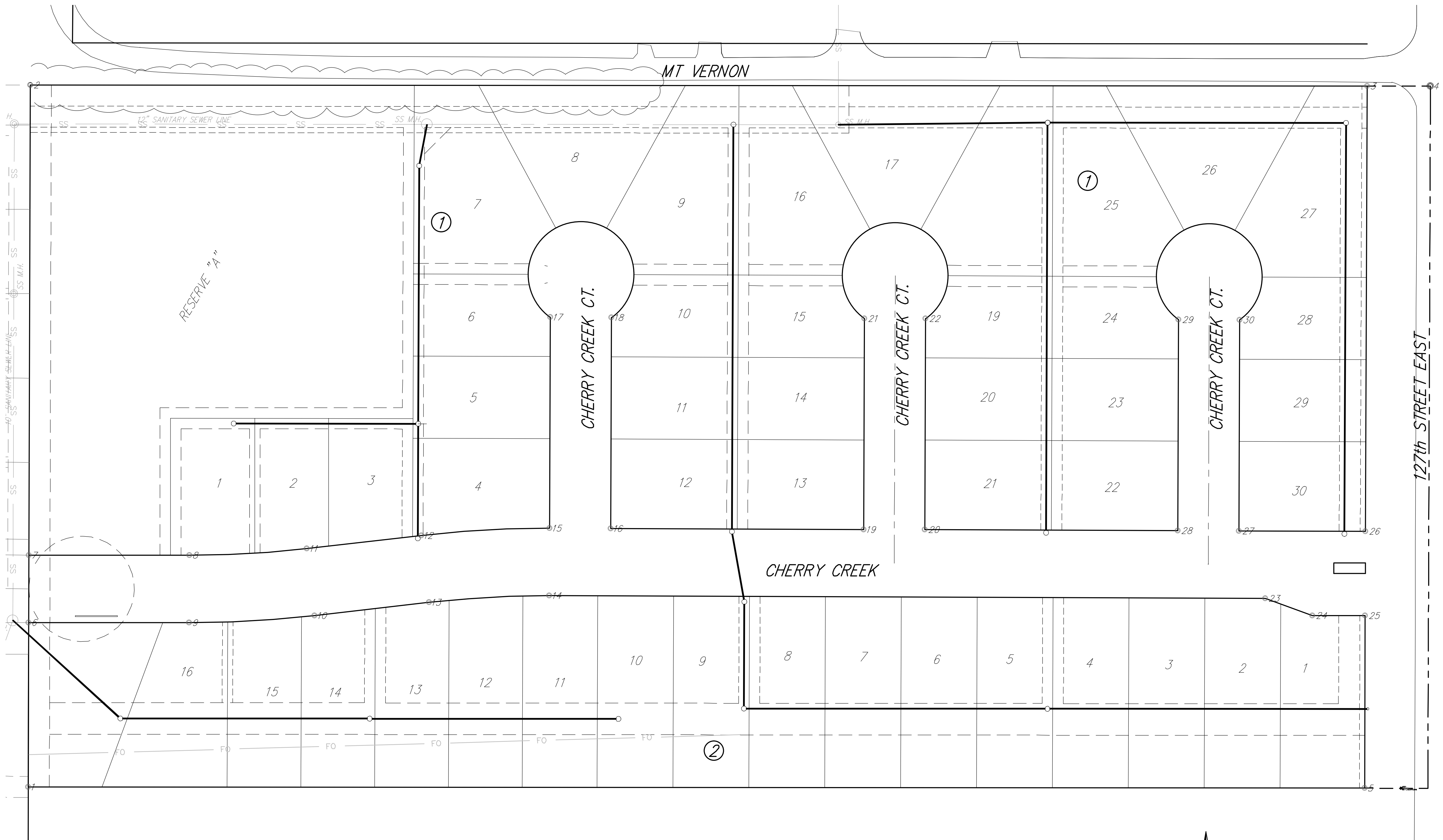
**TARA CREEK ADDITION
LINE 2
WICHITA, KANSAS**

PROJECT NUMBER: 468-84-363
DRAWING FILE: Eng base {SS Line 2}

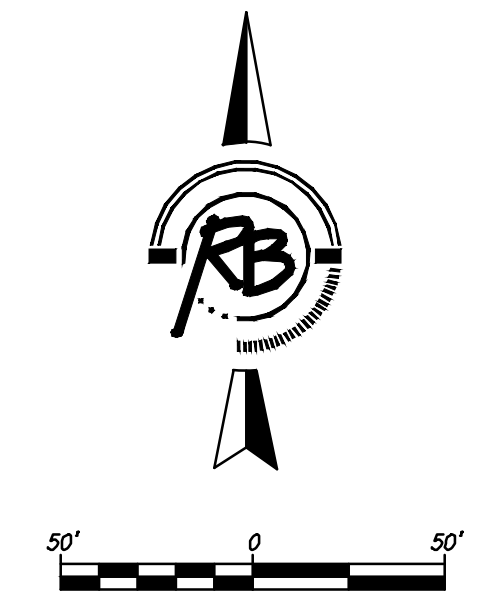
DESIGN: AML
DRAWN: AML
DATE: Sept. 27, 2007
REVIEW: AML

RB JOB: 41877
SHEET: 3
14

RUGGLES & BOHM
ARCHITECTS | ENGINEERS | LANDSCAPE ARCHITECTS | ENVIRONMENTAL SCIENTISTS
1000 W. 17TH AVENUE, SUITE 100, WICHITA, KANSAS 67202-1000



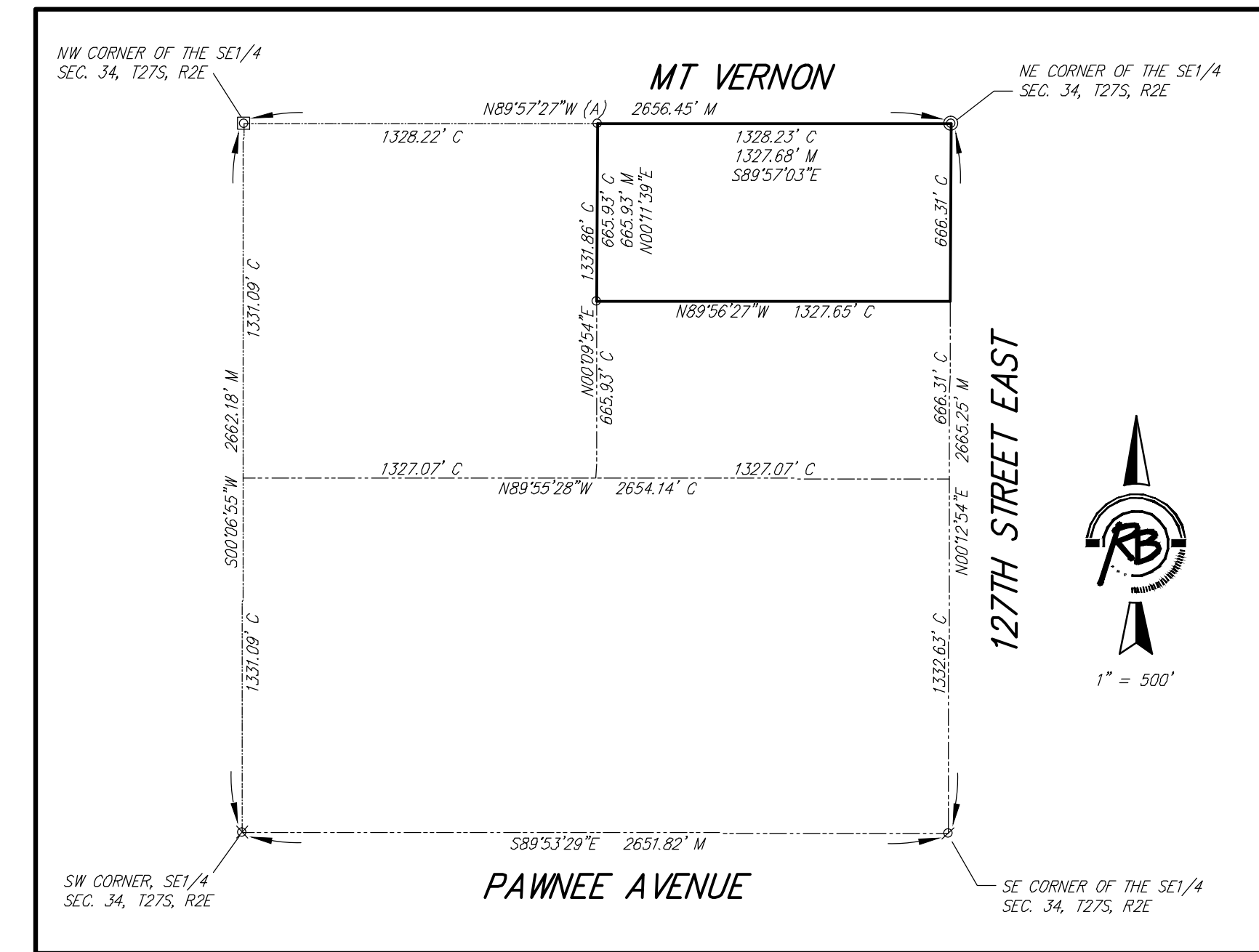
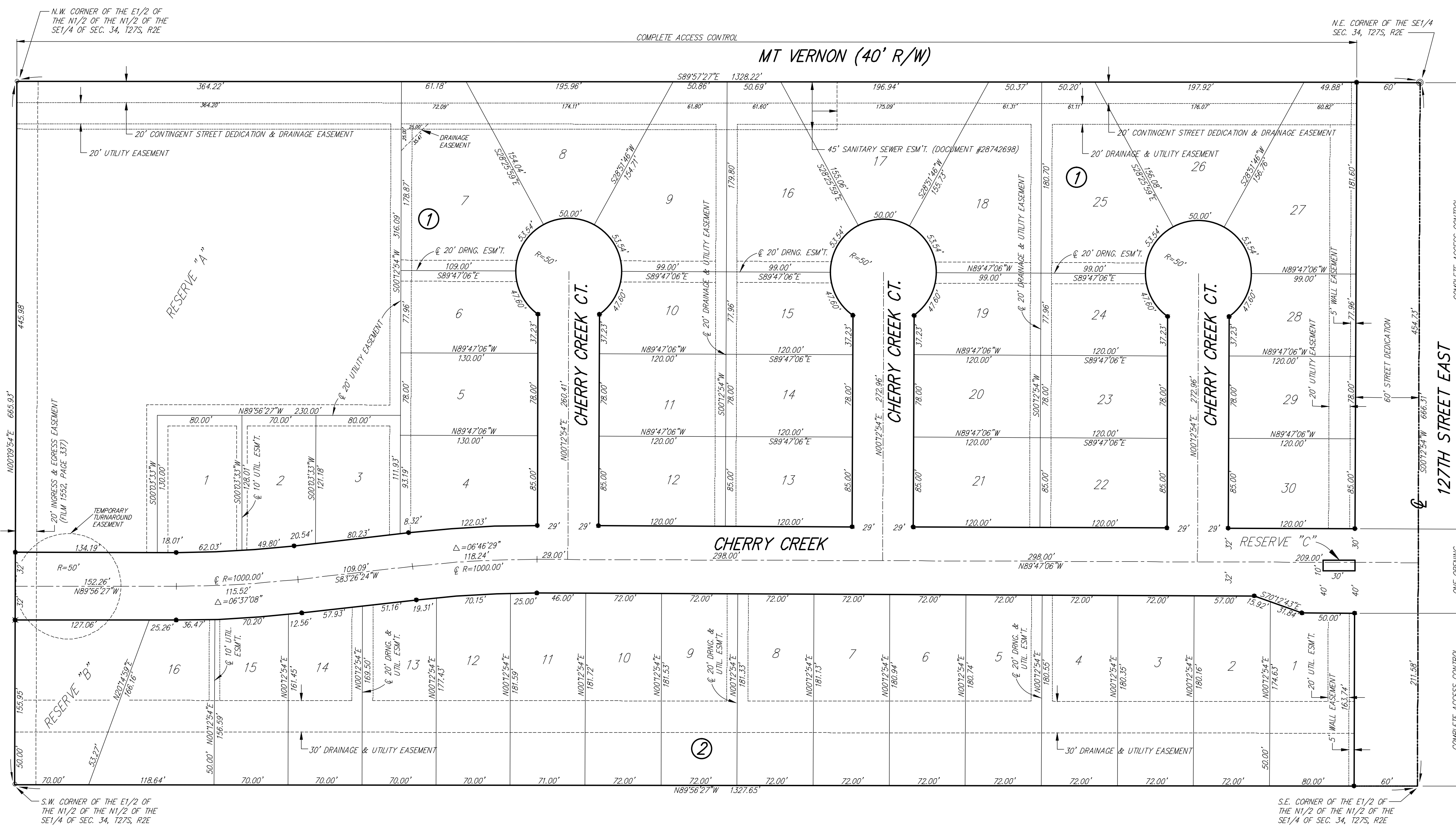
Point Table			
Point #	Northing	Easting	Description
8	22215.05	21484.50	Iron
16	22240.38	21884.23	Iron
24	22157.88	22549.92	Iron
1	21995.26	21331.66	Iron
9	22151.05	21484.43	Iron
17	22440.82	21826.98	Iron
25	22157.69	22599.92	Iron
2	22661.19	21333.58	Iron
10	22157.80	21603.39	Iron
18	22440.60	21884.98	Iron
26	22237.69	22600.22	Iron
3	22660.24	22601.81	Iron
11	22221.38	21596.08	Iron
19	22239.48	22124.23	Iron
27	22238.14	22480.22	Iron
4	22660.20	22661.81	Iron
12	22233.85	21704.46	Iron
20	22239.26	22182.22	Iron
28	22238.36	22422.22	Iron
5	21993.95	22599.31	Iron
13	22170.27	21711.77	Iron
21	22439.70	22124.98	Iron
29	22438.59	22422.97	Iron
6	22151.20	21332.11	Iron
14	22176.60	21825.99	Iron
22	22439.49	22182.98	Iron
30	22438.37	22480.97	Iron
7	22215.20	21332.30	Iron
15	22240.60	21826.23	Iron
23	22174.05	22504.98	Iron



TARA CREEK ADDITION COORDINATE MAP WICHITA, KANSAS			
SEAL	RB RUGGLES & BOHM		DATE Sept. 26, 2013
	ENGINEERING SURVEYING LANDSCAPE ARCHITECTURE GOVERNMENT		DESIGN AML
	924 NORTH MAIN WICHITA, KANSAS 67203 P (316) 264-8008 F (316) 264-4621 WWW.RBKANSAS.COM		DRAWN AML
	PROJECT NUMBER 468-84363	RB JOB NO. 4187E	DWG. SCALE 1"=40'
DRAWING FILE Eng base {04 SS Esmt Grading}			SHEET 13 OF 14

TARA CREEK

An Addition to Wichita, Sedgwick County, Kansas



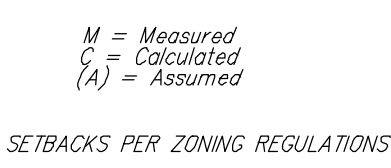
This plat approved and all dedications shown hereon accepted by the City Council of the City of Wichita, Kansas, this _____ day of _____, _____

At the Direction of the City Council

_____ Mayor
 Carl Brewer
 _____ City Clerk
 Karen Sublett

Reviewed in accordance with K.S.A. 58-2005 on this _____ day of _____, 2007.

_____ Deputy County Surveyor
 Tricia L. Robello, LS #1246



- SURVEY MARKER LEGEND**
- = PK NAIL IN CONCRETE (FOUND)
 - = 1/2" REBAR W/LAND MEASURE CAP (FOUND)
 - ⊙ = 3/4" IRON PIPE (FOUND)
 - ⊗ = 5/8" REBAR W/GARBER CAP (FOUND)
 - ✕ = 1" BAR (FOUND)
 - = 5/8" REBAR W/R&B CAP (FOUND FROM CASA BELLA ADDITION)
 - = 5/8" REBAR W/R&B CAP (SET)

State of Kansas) SS
 Sedgwick County)

We, Ruggles & Bohm, P.A., Land Surveyors in aforesaid county and state, do hereby certify that, under the supervision of the undersigned, we have surveyed and platted "TARA CREEK", An Addition to Wichita, Sedgwick County, Kansas, and that the accompanying plat is a true and correct exhibit of the property surveyed, described as follows:

The East Half of the North Half of the North Half of the Southeast Quarter of Section 34, Township 27 South, Range 2 East of the 6th P.M., Sedgwick County, Kansas.

Know all men by these presents that we, the undersigned, have caused the land described in the surveyor's certificate to be platted into Lots, Blocks, Reserves and Streets, to be known as "TARA CREEK", An Addition to Wichita, Sedgwick County, Kansas. Access Controls as indicated are hereby granted to the appropriate governing body. The streets are hereby dedicated to and for the use of the public. Utility Easements are hereby granted for the construction and maintenance of all public utilities. Drainage Easements are hereby granted to the public as indicated for drainage purposes. Reserves "A" and "B" are hereby reserved for walls, signage, gazebos, playground, structures, picnic areas/ tables with canopies, irrigation, walks, lighting, landscaping, berms, lakes, drainage, drainage structures, and utilities confined to easements. Reserve "C" is hereby reserved for entry features, signage, irrigation, lighting and landscaping. The Reserves are to be owned and maintained by the Home Owners Association for the addition. The contingent street dedication shall become effective in the event that the City determines a need for the right-of-way for any street-related purposes. The Temporary turnaround easement is hereby granted for the use of the public, and will expire upon extension of Cherry Creek beyond the limits of this plat. A drainage plan has been developed for this plat; the property shall remain at established grades, or as modified with the approval of the City Engineer, and unobstructed to allow for the conveyance of storm water.

State of Kansas) SS
 Sedgwick County)

The foregoing instrument acknowledged before me, this _____ day of _____, 2007, by Eugene Vitarelli, President of A&D Properties, Inc., on behalf of the corporation.

_____ Notary Public
 Mildred E. Franz

My appointment expires _____

This plat of "TARA CREEK", An Addition to Wichita, Sedgwick County, Kansas, has been submitted to and approved by the Wichita-Sedgwick County Metropolitan Area Planning Commission, Wichita, Kansas.

Dated this _____ day of _____, 200____

Wichita-Sedgwick County Metropolitan Area Planning Commission

Entered on transfer record this _____ day of _____, _____

_____ County Clerk
 Don Brace

State of Kansas) SS
 Sedgwick County)

This is to certify that this plat has been filed for record in the office of the Register of Deeds, this _____ day of _____, _____, at _____ o'clock _____ M, and is duly recorded.

_____ Register of Deeds
 Bill Meek

_____ Deputy
 Tonya Buckingham

BENCH MARK: SRB BRASS DISC 55.45' E & 5.13' S. OF THE N.W. COR., SW1/4, SEC. 35, T27S, R2E. ELEV.=1348.35 (N.G.V.D. 1929)

BLOCK	LOT NO.	ELEVATION (N.G.V.D. 1929)
1	1, 2, 3, 5, 6, 7	1336.8

All public easements and dedications are hereby vacated by virtue of K.S.A. 12-512(b).

Ruggles & Bohm, P.A.

_____ Land Surveyor
 Thomas C. Ruggles

A & D Properties, Inc.

_____ President
 Eugene Vitarelli

_____ Chair
 Darrell A. Downing

_____ Secretary
 John L. Schlegel

Sht. 14 of 14

Ruggles & Bohm, P.A.
 Engineering, Surveying, Land Planning

924 North Main (316) 264-8008
 Wichita, Kansas 67203 (316) 264-4621 fax
 www.rtkansas.com E-mail: info@rtkansas.com

DWG FILE: SURVEY BASE PROJECT NO. 2929P JANUARY 22, 2007