

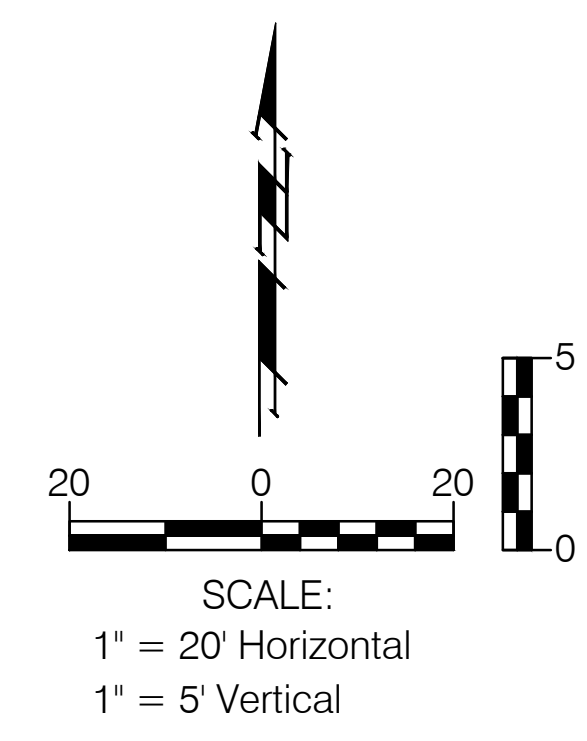
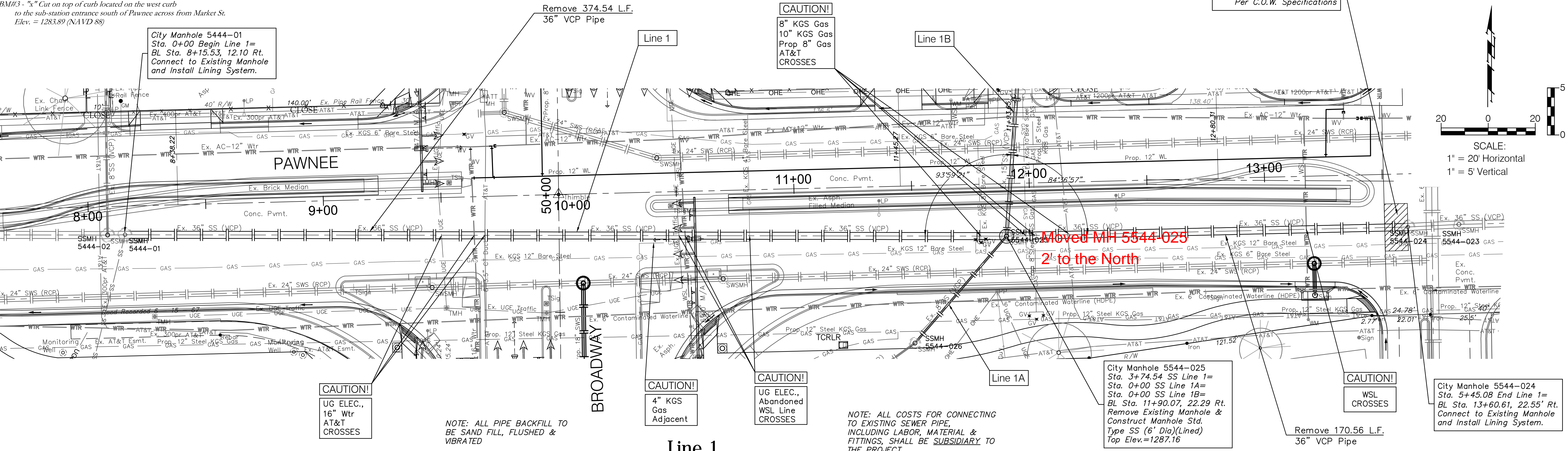
FHWA REGION NO.	STATE	PROJECT NO.	FISCAL YEAR	SHEET NO.	TOTAL SHEETS
7	KANSAS	468-8466	2011	2	3

BM#2 - C.O.W. Disc located on the northwest corner of Pawnee & Broadway (52' north of CL Pawnee, 40' west of CL Broadway)
Elev. = 1286.28 (NAVD 88)

BM#3 - "x" Cut on top of curb located on the west curb to the sub-station entrance south of Pawnee across from Market St.
Elev. = 1283.89 (NAVD 88)

NOTE: ALL TRENCH TO BE SURFACED WITH 6" TEMPORARY ASPHALT PAVEMENT.

Remove Existing Conc. Pmnt. Replace in Kind Per C.O.W. Specifications



CAUTION!
UG ELEC.,
16" Wtr
AT&T
CROSSES

NOTE: ALL PIPE BACKFILL TO BE SAND FILL, FLUSHED & VIBRATED

CAUTION!
4" KGS
Gas
Adjacent

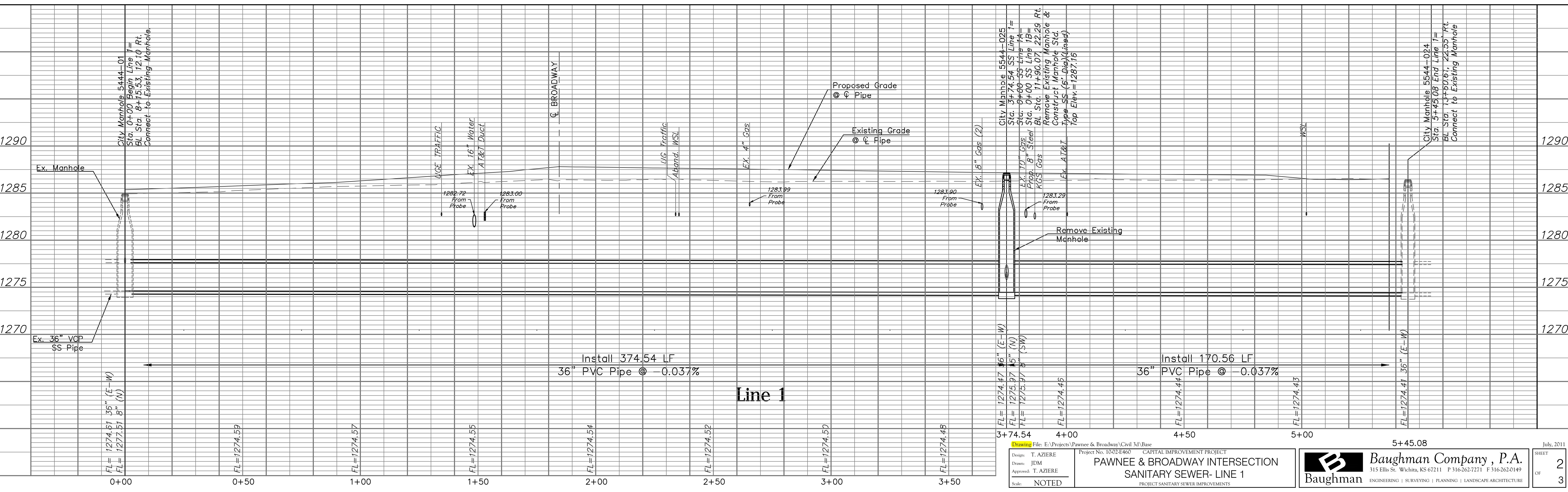
CAUTION!
UG ELEC.,
Abandoned
WSL Line
CROSSES

NOTE: ALL COSTS FOR CONNECTING TO EXISTING SEWER PIPE, INCLUDING LABOR, MATERIAL & FITTINGS, SHALL BE SUBSIDIARY TO THE PROJECT

City Manhole 5544-025
Sta. 3+74.54 SS Line 1=
Sta. 0+00 SS Line 1A=
Sta. 0+00 SS Line 1B=
BL Sta. 11+90.07, 22.29 Rt.
Remove Existing Manhole &
Construct Manhole Std.
Type SS (6' Dia)(Lined)
Top Elev.=1287.16

CAUTION!
WSL
CROSSES

City Manhole 5544-024
Sta. 5+45.08 End Line 1=
BL Sta. 13+60.61, 22.55 Rt.
Connect to Existing Manhole
and Install Lining System.



City Manhole 5544-025
Sta. 3+74.54 SS Line 1=
Sta. 0+00 SS Line 1A=
Sta. 0+00 SS Line 1B=
BL Sta. 11+90.07, 22.29 Rt.
Remove Existing Manhole &
Construct Manhole Std.
Type SS (6' Dia)(Lined)
Top Elev.=1287.16

City Manhole 5544-024
Sta. 5+45.08 End Line 1=
BL Sta. 13+60.61, 22.55 Rt.
Connect to Existing Manhole