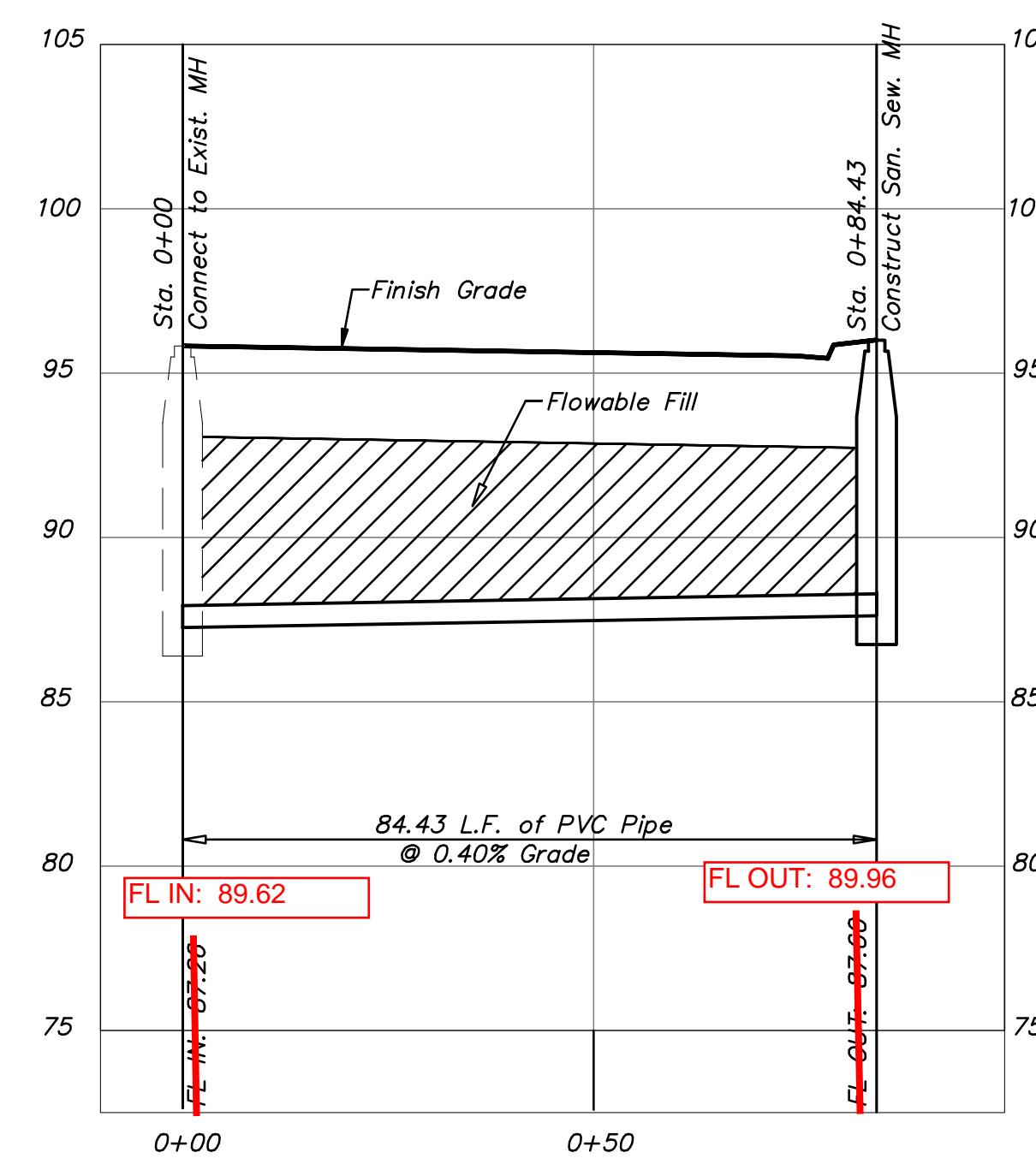
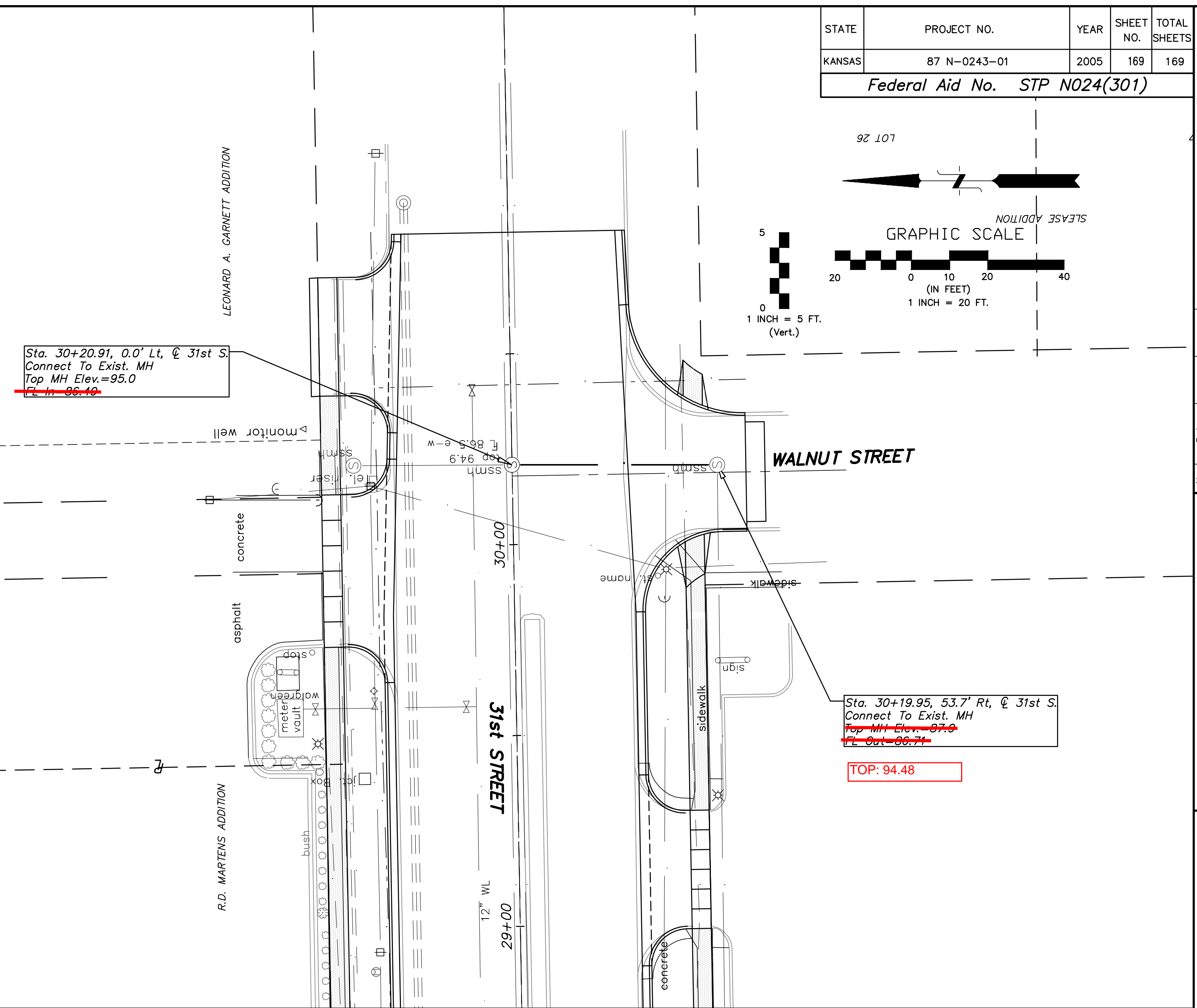
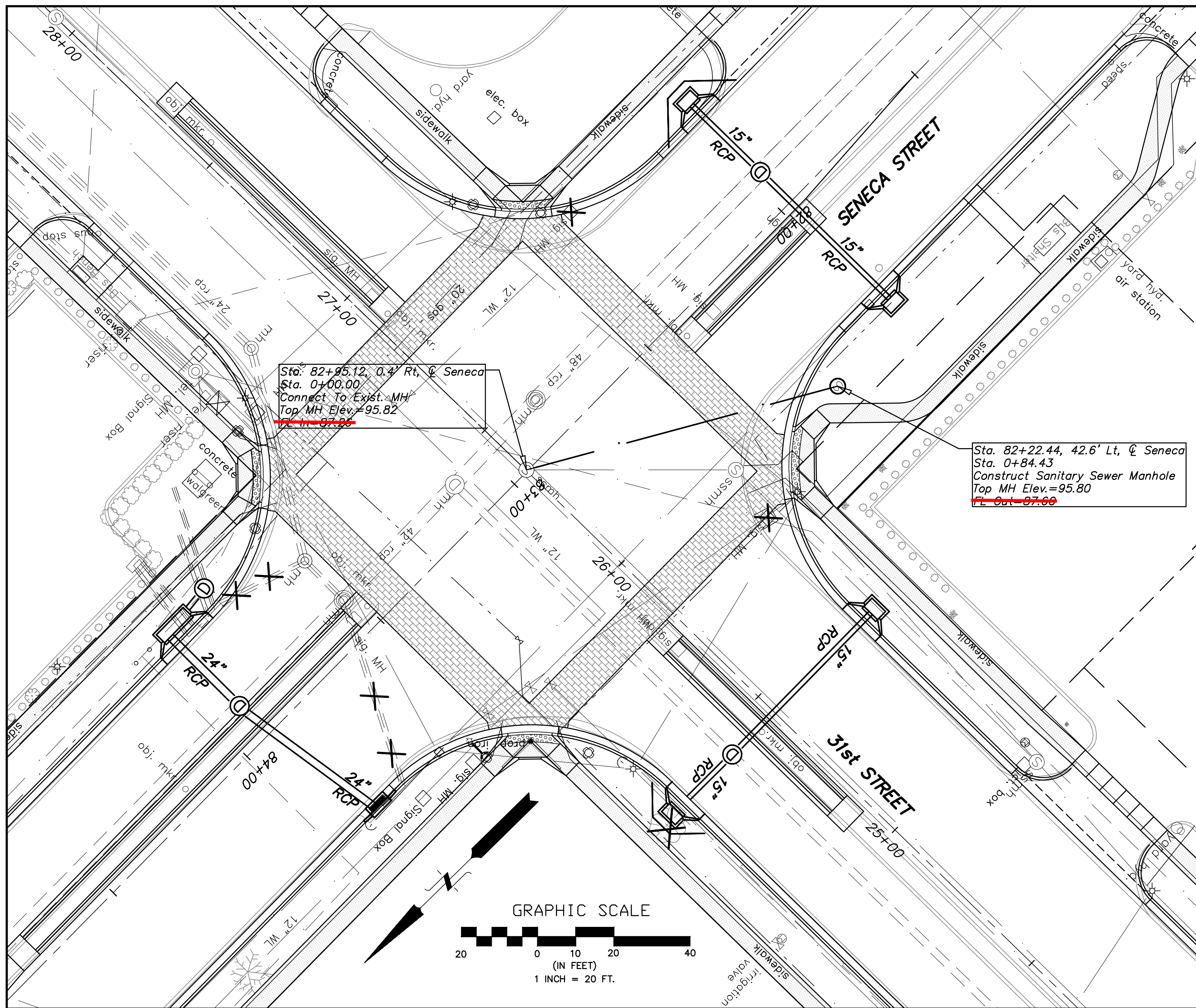
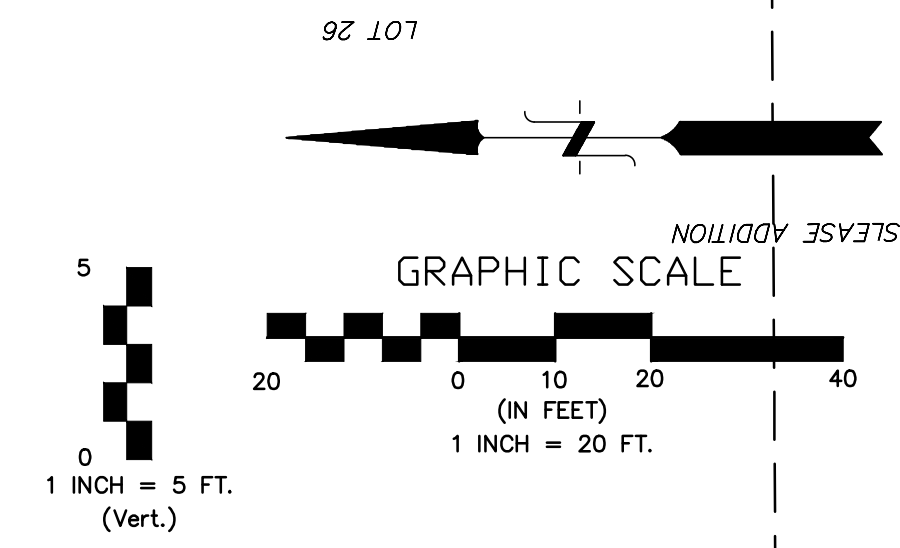
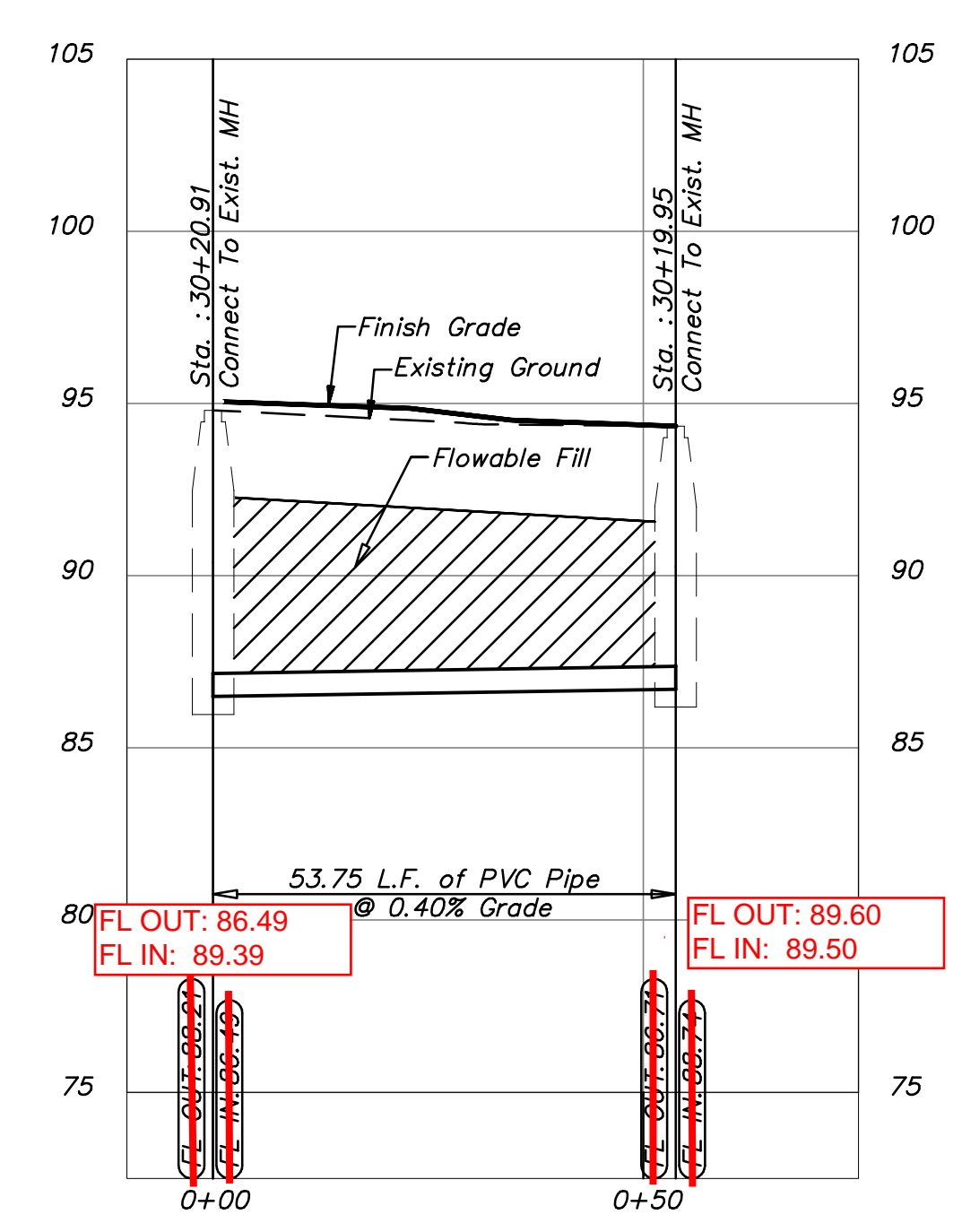


STATE	PROJECT NO.	YEAR	SHEET NO.	TOTAL SHEETS
KANSAS	87 N-0243-01	2005	169	169

Federal Aid No. STP N024(301)



Dondlinger & Sons- Contractor  
 S. Degenhardt - City of Wichita, Field Project Engineer  
 R. Strothman - City of Wichita, Inspector  
 As-built  
 Release Date:  
 pdf: APRosas, 7/7/2014



SENECA STREET 1-235 TO 31ST STREET CITY OF WICHITA, KANSAS SANITARY SEWER PLAN AND PROFILE	POE & ASSOCIATES, INC. CONSULTING ENGINEERS 5940 E. Central, Suite 200 □ Wichita, KS 67208-4242 Phone: 316/685-4114 □ FAX: 316/685-4444	<b>PE</b>	Engineer: P. FERGUSON Designer: J. UNRUH KDOT Job No.: 87 N-0243-01 Poe Job No.: 1794 Date: JANUARY 2010
---	---	-----------	---

Sheet 169 of 169