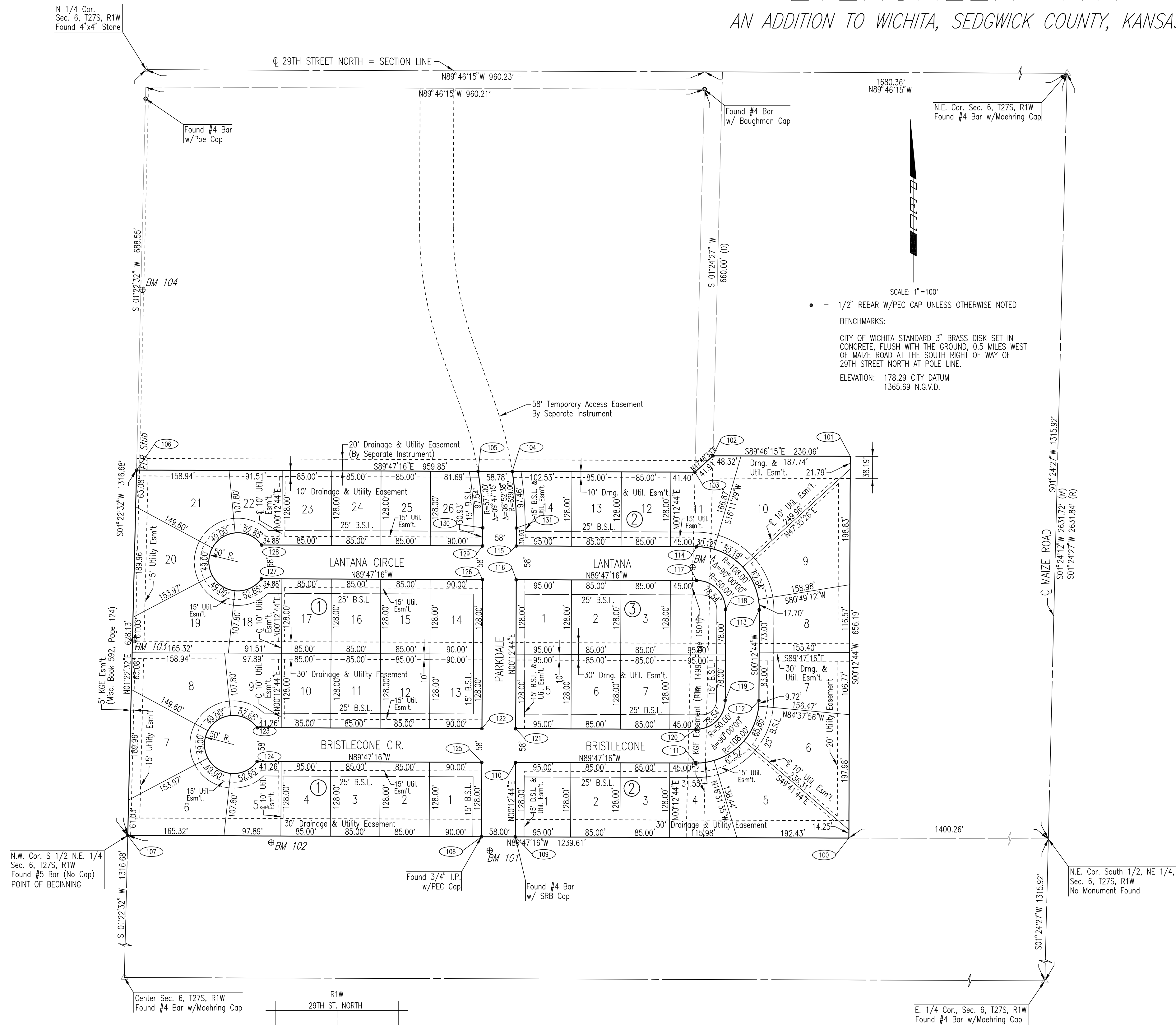


EVERGREEN 4TH

AN ADDITION TO WICHITA, SEDGWICK COUNTY, KANSAS



SCALE: 1"=100'

• = 1/2" REBAR W/PEC CAP UNLESS OTHERWISE NOTED

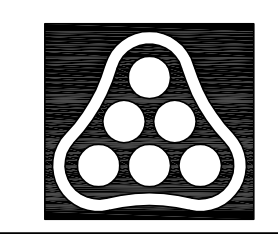
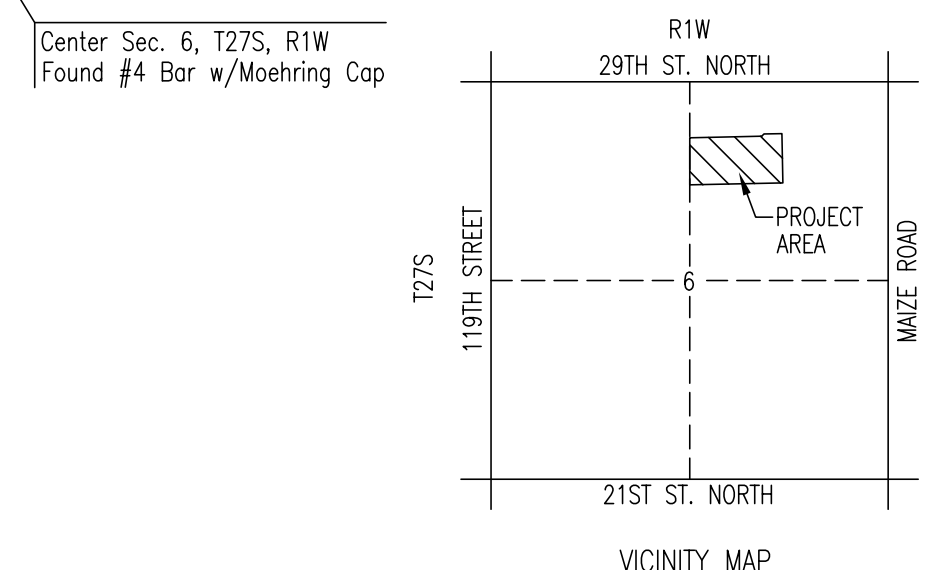
BENCHMARKS:
CITY OF WICHITA STANDARD 3" BRASS DISK SET IN CONCRETE, FLUSH WITH THE GROUND, 0.5 MILES WEST OF MAIZE ROAD AT THE SOUTH RIGHT OF WAY OF 29TH STREET NORTH AT POLE LINE.

ELEVATION: 178.29 CITY DATUM
1365.69 N.G.V.D.

COORDINATE LIST		
POINT	NORTH	EAST
100	8,955.6698	3,695.5587
101	9,611.8558	3,697.9904
102	9,612.7998	3,461.9316
103	9,584.6550	3,430.8820
104	9,585.8184	3,116.9511
105	9,586.0362	3,058.1753
106	9,588.2120	2,471.0394
107	8,960.2055	2,455.9585
108	8,958.0190	3,064.1485
109	8,957.8753	3,122.1808
110	9,085.7939	3,122.6329
111	9,084.6451	3,432.6308
112	9,192.2441	3,541.0303
113	9,348.2430	3,541.6084
114	9,456.6425	3,434.0093
115	9,457.7913	3,124.0115
116	9,399.7917	3,123.7965
117	9,398.6429	3,433.7944
118	9,348.4580	3,483.6088
119	9,192.4590	3,483.0307
120	9,142.6447	3,432.8457
121	9,143.7935	3,122.8478
122	9,144.0084	3,064.8482
123	9,145.4398	2,678.5933
124	9,087.4402	2,678.3783
125	9,086.0088	3,064.6333
126	9,400.0067	3,065.7969
127	9,401.4144	2,685.9179
128	9,459.4140	2,686.1328
129	9,458.0063	3,066.0119
130	9,488.9391	3,066.1265
131	9,488.7241	3,124.1261

100 = COORDINATE POINT NO.

DSNR: BDB OPER: BJS SCALE: 1"=100.00
 Q:\2003\03123\000\SWS\FINAL PLAT 02-10-2004 06:37:39 am



No.	Revision	By	Date
EVERGREEN 4TH STORM WATER SEWER NO. 589 PLAT JAMES L. ARMOUR, P.E.—ACTING CITY ENGINEER CITY OF WICHITA PROJECT NO. 468-83640 Professional Engineering Consultants, P.A. 303 S. TOPEKA • WICHITA, KANSAS 67202 316-262-2691 • FAX 316-262-3003			
Designed by	BDB	Job No.	35-03123
Drawn by	BJS	Date	June 2003
			Sh. 3 of 17