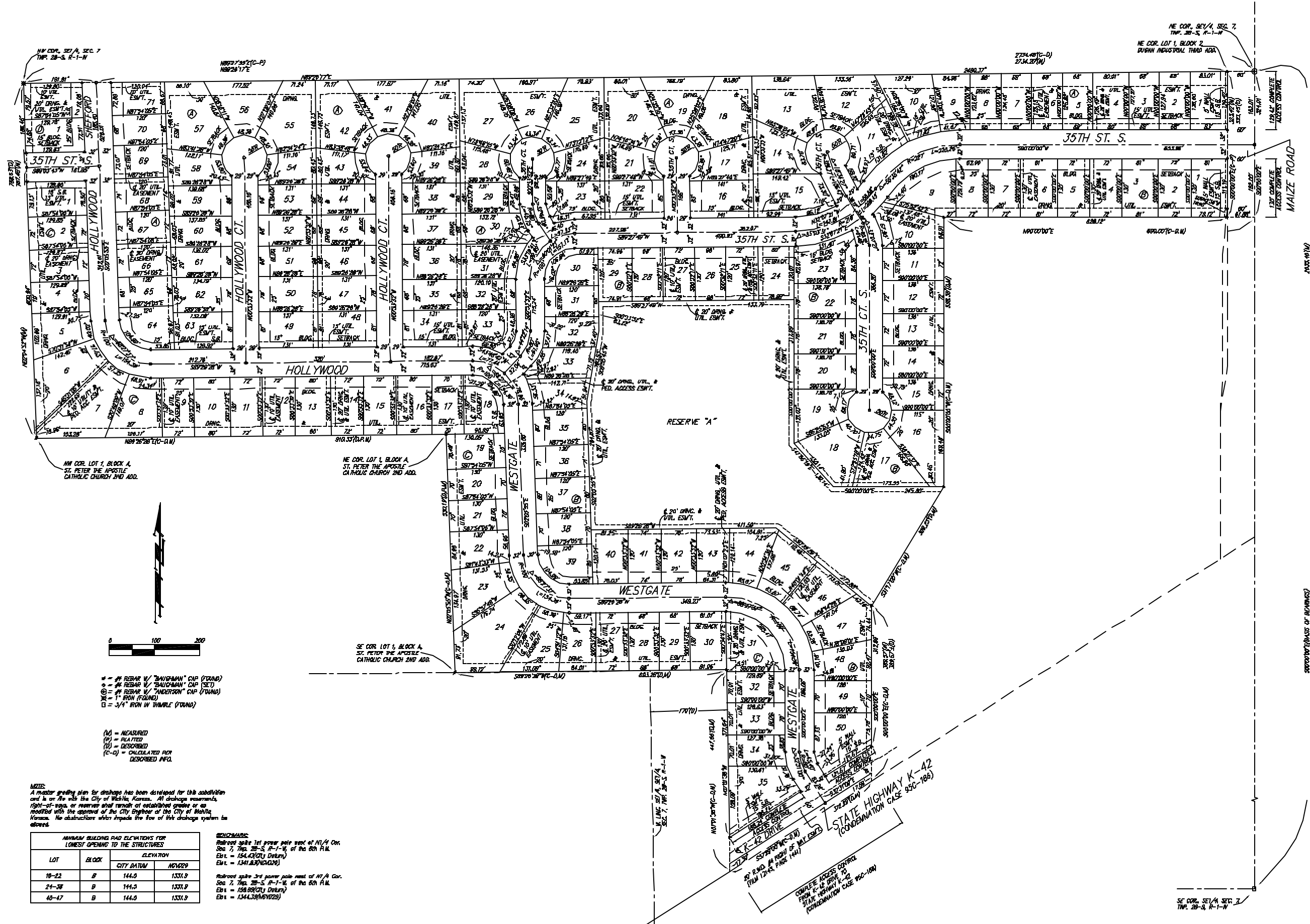


# HARVEST RIDGE ADDITION

## WICHITA, SEDGWICK COUNTY, KANSAS



- ⊖ = # REBAR W/ "BAUGHMAN" CAP (FOUND)
- ⊕ = # REBAR W/ "BAUGHMAN" CAP (SET)
- ⊙ = # REBAR W/ "ANDERSON" CAP (FOUND)
- ⊗ = 1" IRON (FOUND)
- ⊠ = 3/4" IRON W/ THIMBLE (FOUND)

- (M) = MEASURED
- (P) = PLATTED
- (D) = DESCRIBED
- (C-D) = CALCULATED FOR DESCRIBED INFO.

**NOTES:**  
 A master grading plan for drainage has been developed for this subdivision and is on file with the City of Wichita, Kansas. All drainage easements, right-of-way, or reserves shall remain established grades or as modified with the approval of the City Engineer of the City of Wichita, Kansas. No obstructions shall impede the flow of this drainage system as shown.

MINIMUM BUILDING PAD ELEVATIONS FOR CHIMNEY OPENINGS TO THE STRUCTURES			
LOT	BLOCK	ELEVATION	
		CITY DATUM	NOV20
16-22	B	144.5	1331.9
24-38	B	144.5	1331.9
40-47	B	144.5	1331.9

**BENCHMARKS:**  
 Railroad spike 1st power pole west of N1/4 Cor. Sec. 7, Twp. 28-S, R-1-W, of the 8th P.M.  
 Ebn = 1344.6 (CITY DATUM)  
 Ebn = 1341.8 (NOV20)  
 Railroad spike 3rd power pole west of N1/4 Cor. Sec. 7, Twp. 28-S, R-1-W, of the 8th P.M.  
 Ebn = 1368.8 (CITY DATUM)  
 Ebn = 1344.3 (NOV20)