

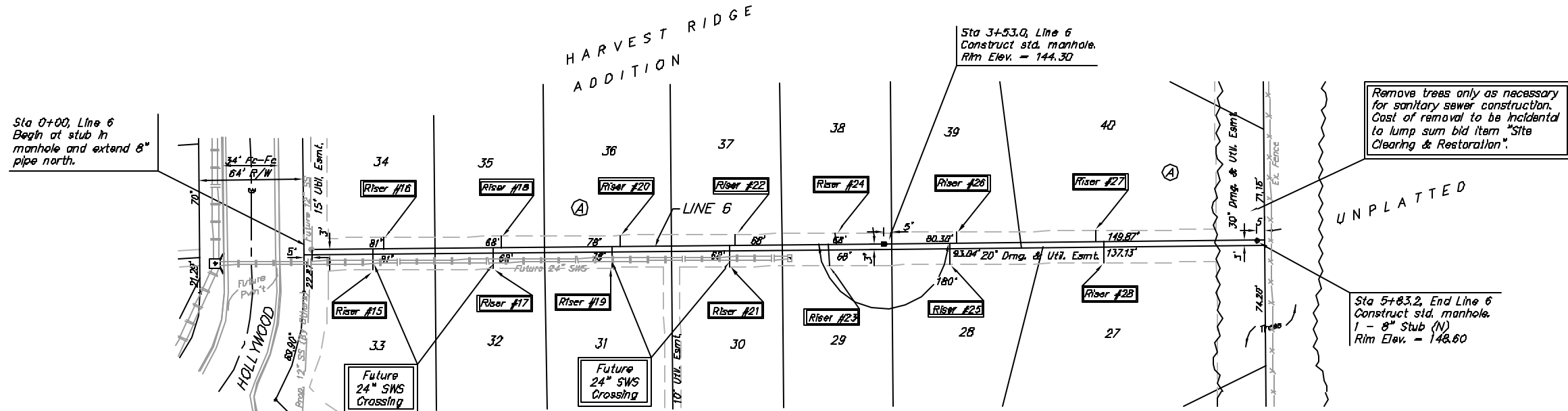
Benchmarks:

BM #1: Small RR spike in 2nd PP north of K-42 Highway, west side of Maize
Elev. = 143.61 (City Datum)

BM #2: Small RR spike in PP east of East 1/4 Corner (G)
Elev. = 147.00 (City Datum)

BM #3: "□" Top Headwall southeast corner K-42 Highway and Maize (County BM with City Datum)
Elev. = 144.04 (City Datum)

Scale: 1" = 40' Horizontal
1" = 5' Vertical
= Iron



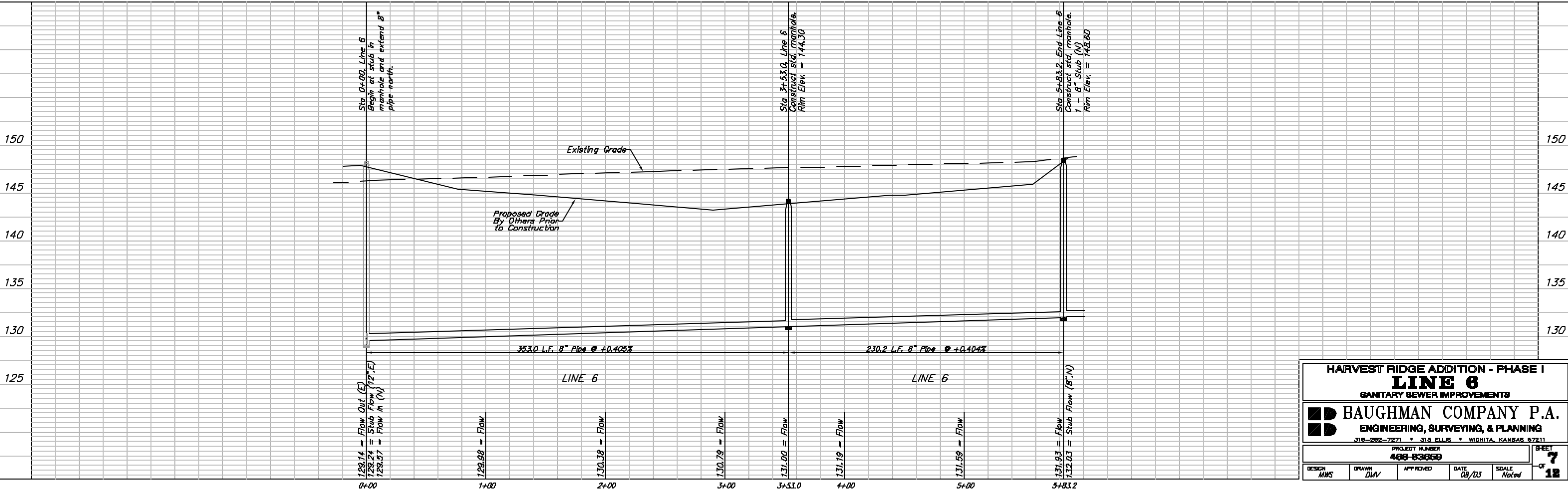
SEWER SERVICE TABLE

NUMBER	TYPE	LOCATION				FOR INFORMATION ONLY	
		LOT NO.	BLOCK NO.	LINE NO.	STATION \ DIRECTION	APPROXIMATE LENGTH 4" PIPE VERTICAL	HORIZONTAL
15	8" x 4" Tee Saddle	33	A	6	0+38/RL	15'	13'
16	8" x 4" Tee Saddle	34	A	6	0+43/LL	15'	7'
17	8" x 4" Tee Saddle	32	A	6	1+12/RL	13'	13'
18	8" x 4" Tee Saddle	35	A	6	1+17/LL	13'	7'
19	8" x 4" Tee Saddle	31	A	6	1+84/RL	12'	13'
20	8" x 4" Tee Saddle	36	A	6	1+89/LL	12'	7'
21	8" x 4" Tee Saddle	30	A	6	2+57/RL	11'	13'

NUMBER	TYPE	LOCATION				FOR INFORMATION ONLY	
		LOT NO.	BLOCK NO.	LINE NO.	STATION \ DIRECTION	APPROXIMATE LENGTH 4" PIPE VERTICAL	HORIZONTAL
22	8" x 4" Tee Saddle	37	A	6	2+62/LL	11'	7'
23	8" x 4" Tee Saddle	29	A	6	3+19/RL	10.5'	13'
24	8" x 4" Tee Saddle	38	A	6	3+24/LL	10.5'	7'
25	8" x 4" Tee Saddle	28	A	6	3+84/RL	11'	13'
26	8" x 4" Tee Saddle	39	A	6	3+89/LL	11'	7'
27	8" x 4" Tee Saddle	40	A	6	4+84/LL	11.5'	7'
28	8" x 4" Tee Saddle	27	A	6	4+89/RL	11.5'	13'

NOTE: Vertical Riser Pipe shall be extended to 2' minimum above ground water elevation and 4' maximum below proposed ground elevation.

NOTE: Vertical Riser Pipe shall be extended to 2' minimum above ground water elevation and 4' maximum below proposed ground elevation.



HARVEST RIDGE ADDITION - PHASE I
LINE 6
SANITARY SEWER IMPROVEMENTS

BAUGHMAN COMPANY P.A.
ENGINEERING, SURVEYING, & PLANNING
315-222-7271 • 315 ELLIS • WICHITA, KANSAS 67211

PROJECT NUMBER: **408-83668** SHEET: **7** OF **18**

DESIGN: MWS DRAWN: DMV APPROVED: DATE: 08/03 SCALE: Noted