

# EMERALD BAY ESTATES SECOND ADDITION

## Wichita, Sedgwick County, Kansas



1" = 100'

MINIMUM BUILDING PAD  
FLYVATION (TOP LOW'S)  
OPENING INTO STRUCTURE'S

BLOCK	LOT NO.'S	FLYVATION (N.G.V.D.)
1	1 56	1321.0

Chord  
Measured  
Calculated  
Assumed

SURVEY MARKER LEGEND

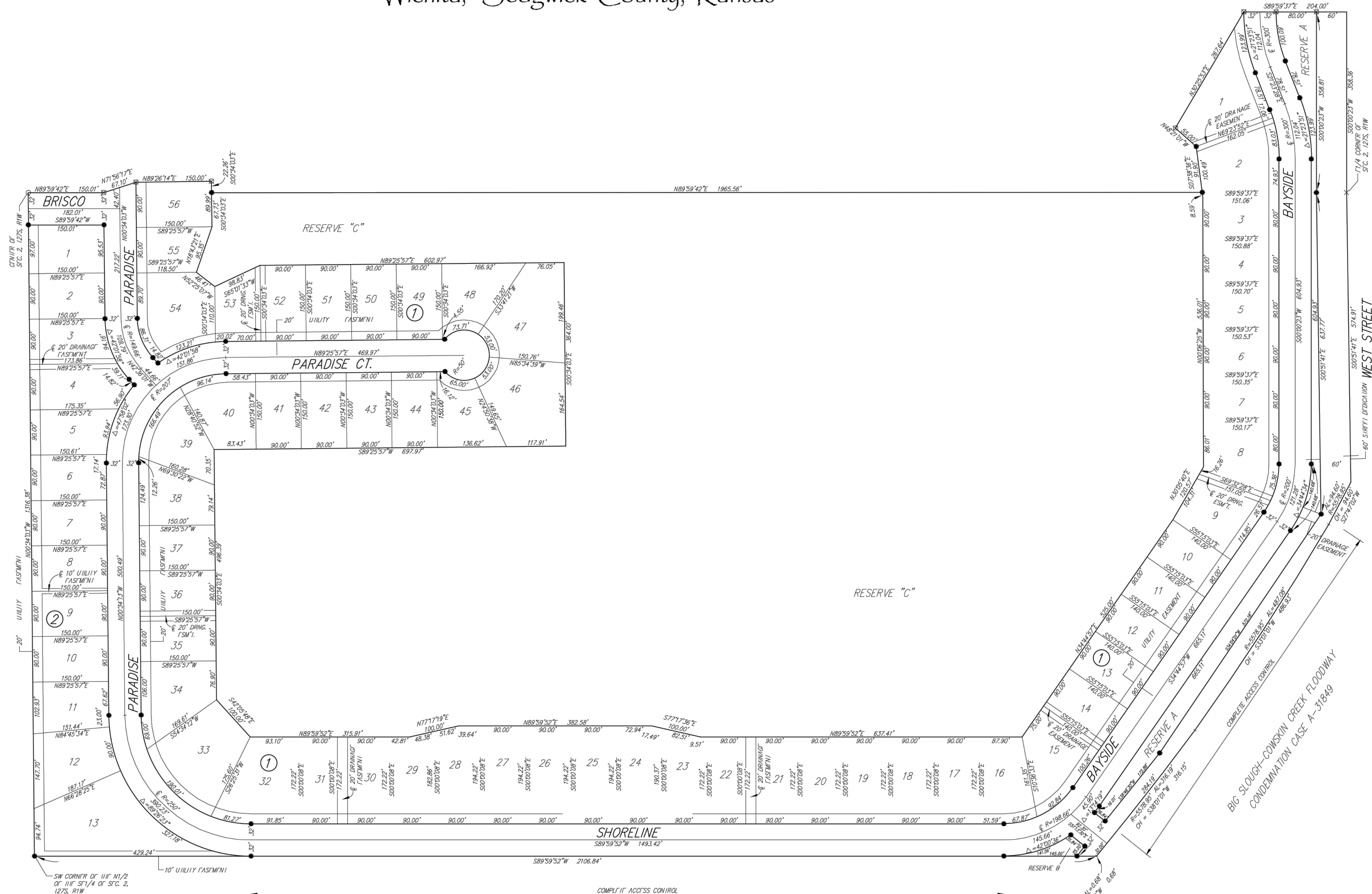
- 1/2" IRON PIPE
- × RAILROAD SPIKE
- 5"x5" CONCRETE MONUMENT WITH A 5/8" REBAR
- 5/8" REBAR W/RUGGL'S & BOHM CAP (FOUND)
- 5/8" REBAR W/RUGGL'S & BOHM CAP (SET)

BRANCH MARK: CITY OF WICHITA BRASS DISK ON  
1/4" NORTHWEST CORNER OF A R.C.B.C., 0.75  
MIL'S EAST OF 100WTR ON 21ST ST. NORTH  
FLYVATION 1321.62 (NGVD29)

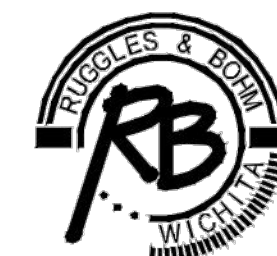
BRANCH MARK: CITY OF WICHITA BRASS DISK TOP  
OF UTADWALL OF R.C.B.C. UNDER WEST SIDE  
NORTH OF 29TH ST. NORTH ON EAST SIDE OF WEST ST.  
FLYVATION 1321.80 (NGVD29)

BRANCH MARK: CITY OF WICHITA BRASS DISK AT  
1/4" NORTHWEST CORNER OF 100WTR AND 21ST  
ST. NORTH  
FLYVATION 1326.47 (NGVD29)

BRANCH MARK: CITY OF WICHITA BRASS DISK AT  
1/4" SOUTHWEST CORNER OF 100WTR AND 29TH  
ST. NORTH  
FLYVATION 1330.16 (NGVD29)



DWG. FILE: SURVEY BAS  
PROJECT NO 3322P  
DATE: 3/13/14



**Ruggles & Bohm, P.A.**  
Engineering, Surveying, Land Planning  
924 North Main  
Wichita, Kansas 67203  
www.rbkansas.com  
(316) 264-8008  
(316) 264-4621 fax  
E-mail: info@rbkansas.com