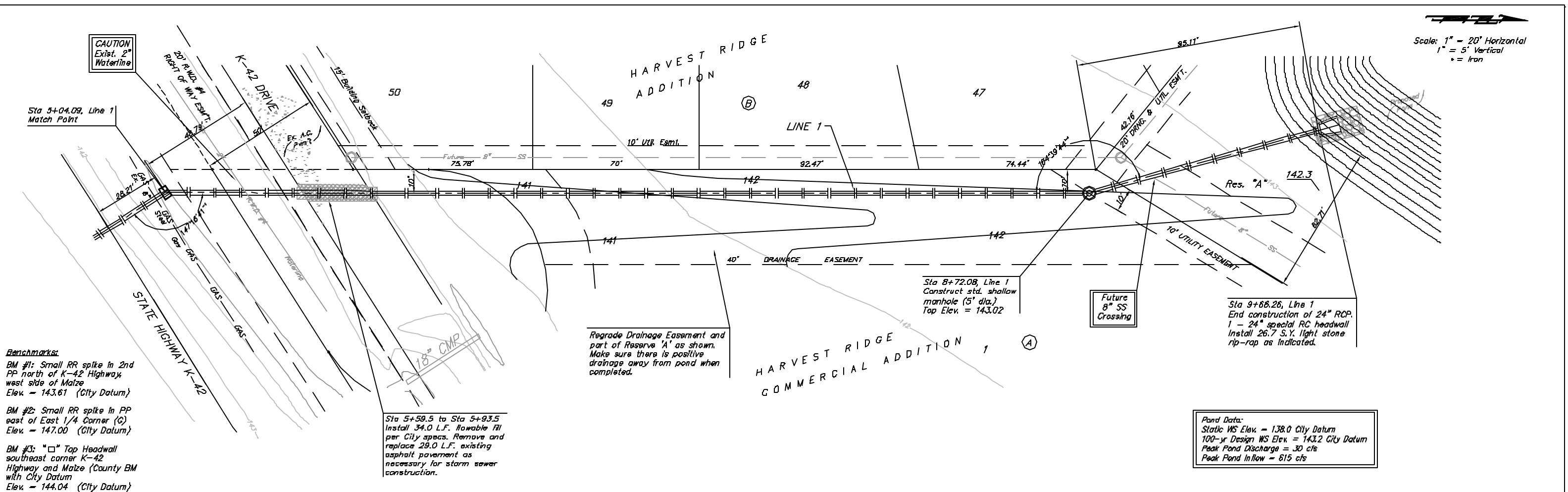


Scale: 1" = 20' Horizontal
 1" = 5' Vertical
 * = Iron



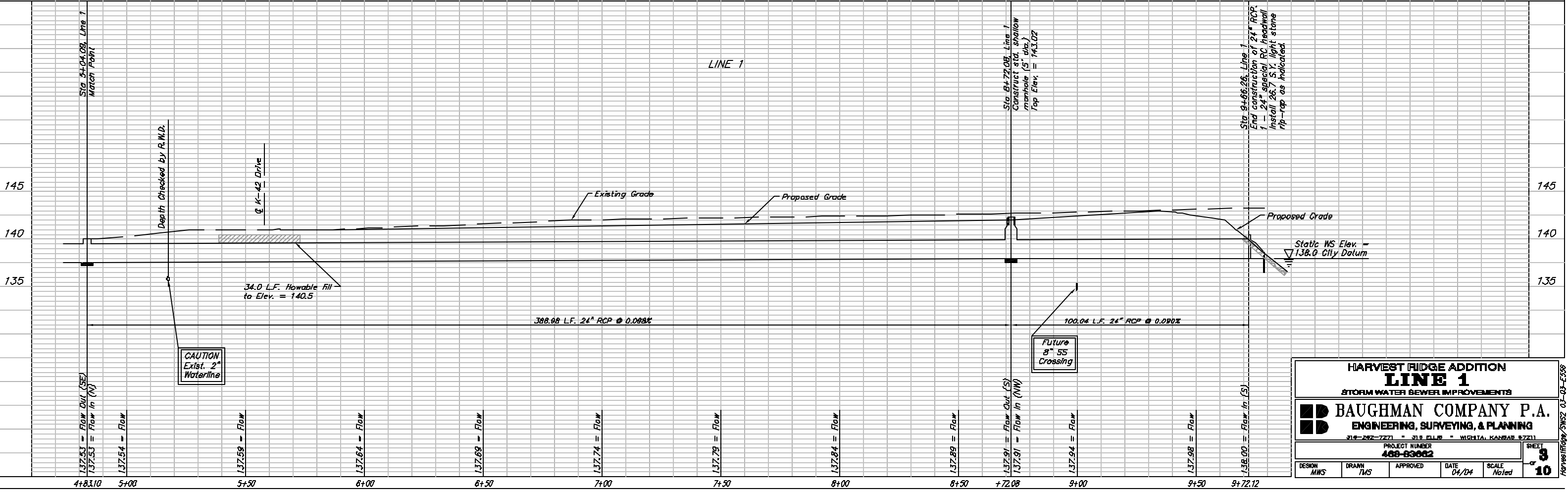
Benchmarks:
 BM #1: Small RR spike in 2nd PP north of K-42 Highway west side of Malze Elev. = 143.61 (City Datum)
 BM #2: Small RR spike in PP east of East 1/4 Corner (G) Elev. = 147.00 (City Datum)
 BM #3: "□" Top Headwall southeast corner K-42 Highway and Malze (County BM with City Datum) Elev. = 144.04 (City Datum)

Sta 5+59.5 to Sta 5+93.5
 Install 34.0 L.F. flowable fill per City specs. Remove and replace 29.0 L.F. existing asphalt pavement as necessary for storm sewer construction.

Regrade Drainage Easement and part of Reserve 'A' as shown. Make sure there is positive drainage away from pond when completed.

Sta 8+72.08, Line 1
 Construct std. shallow manhole (5' dia.)
 Top Elev. = 143.02

Pond Data:
 Static WS Elev. = 138.0 City Datum
 100-yr Design WS Elev. = 143.2 City Datum
 Peak Pond Discharge = 30 cfs
 Peak Pond Inflow = 615 cfs



HARVEST RIDGE ADDITION				
LINE 1				
STORM WATER SEWER IMPROVEMENTS				
BAUGHMAN COMPANY P.A.				
ENGINEERING, SURVEYING, & PLANNING				
318-282-7271 • 318 ELLIS • WICHITA, KANSAS 67211				
PROJECT NUMBER 408-63062				SHEET 3
DESIGN MWS	DRAWN TWS	APPROVED	DATE 04/04	SCALE Noted

HARVEST/STWS/5182 03-03-E258