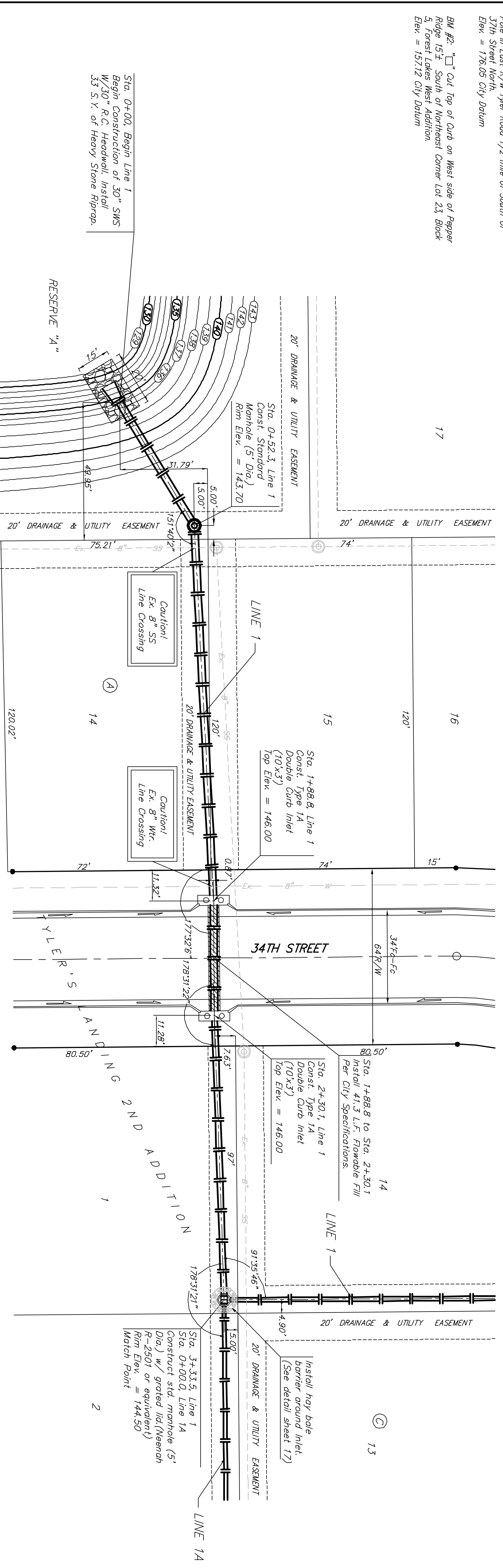


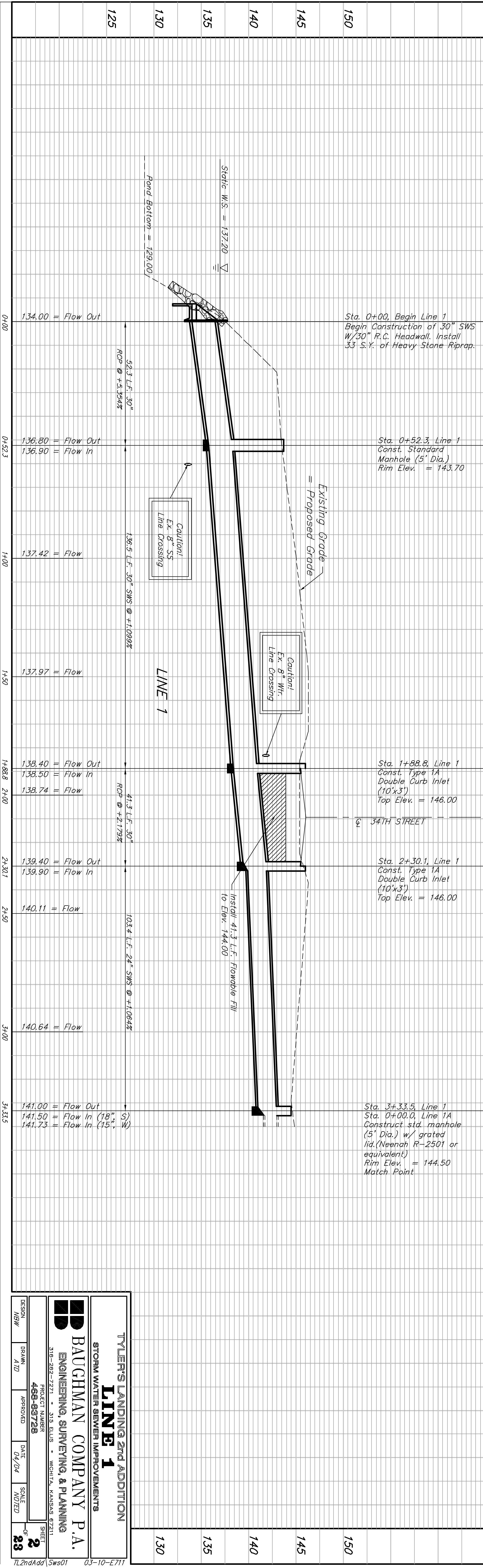
Benchmark:

BM #1: 804 Spike in West face of North High Line Pole in East R/W Tyler Road 1/2 mile of South of 37th Street North.
Elev. = 176.05 City Datum

BM #2: "C" Cut Top of Curb on West side of Pepper Ridge 15'± South of Northeast Corner Lot 23 Block 5, Forest Lakes West Addition.
Elev. = 157.12 City Datum



Scale: 1" = 20' Horizontal
1" = 5' Vertical
• = Iron



TYLER'S LANDING 2ND ADDITION
STORM WATER SEWER IMPROVEMENTS
LINE 1

BAUGHMAN COMPANY P.A.
ENGINEERING, SURVEYING, & PLANNING
316-292-7271 • 316 ELLIS • WICHITA, KANSAS 67211

DESIGN	MBW	DRAWN	AJD	APPROVED	DATE	SCALE	NOTED
PROJECT NUMBER	459-88728			SHEET	2		
<p>7L2ndAdd_Sws01 03-10-E711</p>							