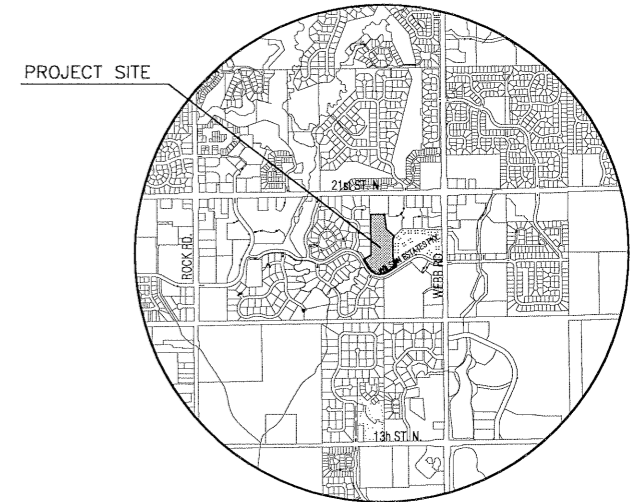


STORMWATER SEWER PLANS BRIGHTON COURTS ADDITION STORMWATER SEWER #593 PROJECT NO. 468-83674

CITY OF WICHITA, KANSAS
NEIL D. CABLE, CITY ENGINEER
OCA NO. 751347



LOCATION MAP

GENERAL NOTES

1. UNLESS SHOWN OR OTHERWISE STATED ON THESE DRAWINGS, MATERIALS AND CONSTRUCTION SHALL BE IN ACCORDANCE WITH THE CITY OF WICHITA STANDARD SPECIFICATIONS.
2. THE TOPS OF INLETS AND MANHOLES AS NOTED ON THE PLANS MAY VARY SO AS TO MEET PROPOSED TOP OF CURB ELEVATIONS OR PAVEMENT ELEVATIONS. THE FIELD ENGINEER SHALL LOCATE INLETS AND MANHOLES WITH REFERENCE TO PROPOSED PAVING PLANS OF THE PERTINENT STREETS.
3. ALL CONCRETE SHALL BE STANDARD PAVING MIX UNLESS OTHERWISE NOTED.
4. THE CONTRACTOR SHALL BE RESPONSIBLE FOR PRESERVING PROPERTY IRONS. THE CONTRACTOR SHALL BE REQUIRED TO RE-ESTABLISH ANY PROPERTY IRONS WHICH ARE DAMAGED OR DESTROYED BY HIS CONSTRUCTION OPERATIONS. SUCH IRONS SHALL BE RE-ESTABLISHED BY A LICENSED LAND SURVEYOR IN ACCORDANCE WITH STATE LAWS.
5. TREES TO BE REMOVED ARE MARKED . ALL TREES WHICH IN THE OPINION OF THE FIELD ENGINEER CAN BE SAVED, SHALL BE SAVED.
6. CONTRACTOR SHALL NOTIFY UTILITY COMPANIES OF CONSTRUCTION SCHEDULING.
7. EXISTING UTILITIES AND THEIR LOCATIONS, AS SHOWN ON THE PLANS REPRESENT THE BEST INFORMATION OBTAINABLE FOR DESIGN. LOCATION INFORMATION HAS BEEN OBTAINED FROM THE VARIOUS COMPANIES AND IS EITHER FROM COMPANY UTILITY DRAWINGS OR COMPANY PROVIDED FIELD LOCATIONS. THE PLAN LOCATIONS SHOWN ARE NOT GUARANTEED. ADDITIONAL EXISTING UTILITIES MAY ALSO BE ENCOUNTERED.
8. CONTRACTOR WILL BE REQUIRED TO PROVIDE A MINIMUM ADVANCE NOTICE OF SEVENTY-TWO (72) HOURS TO UTILITY COMPANIES TO STARTING ANY EXCAVATION AS FOLLOWS:

KANSAS ONE-CALL 800-344-7233
OR 687-2470 (LOCAL WICHITA)

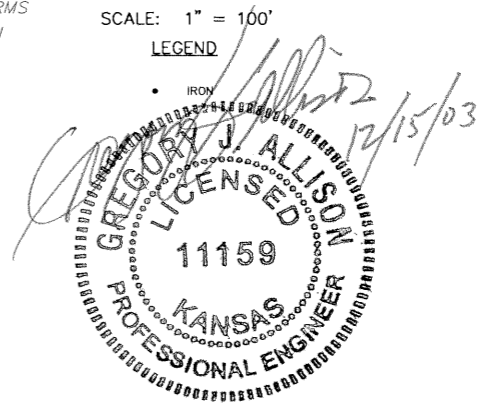
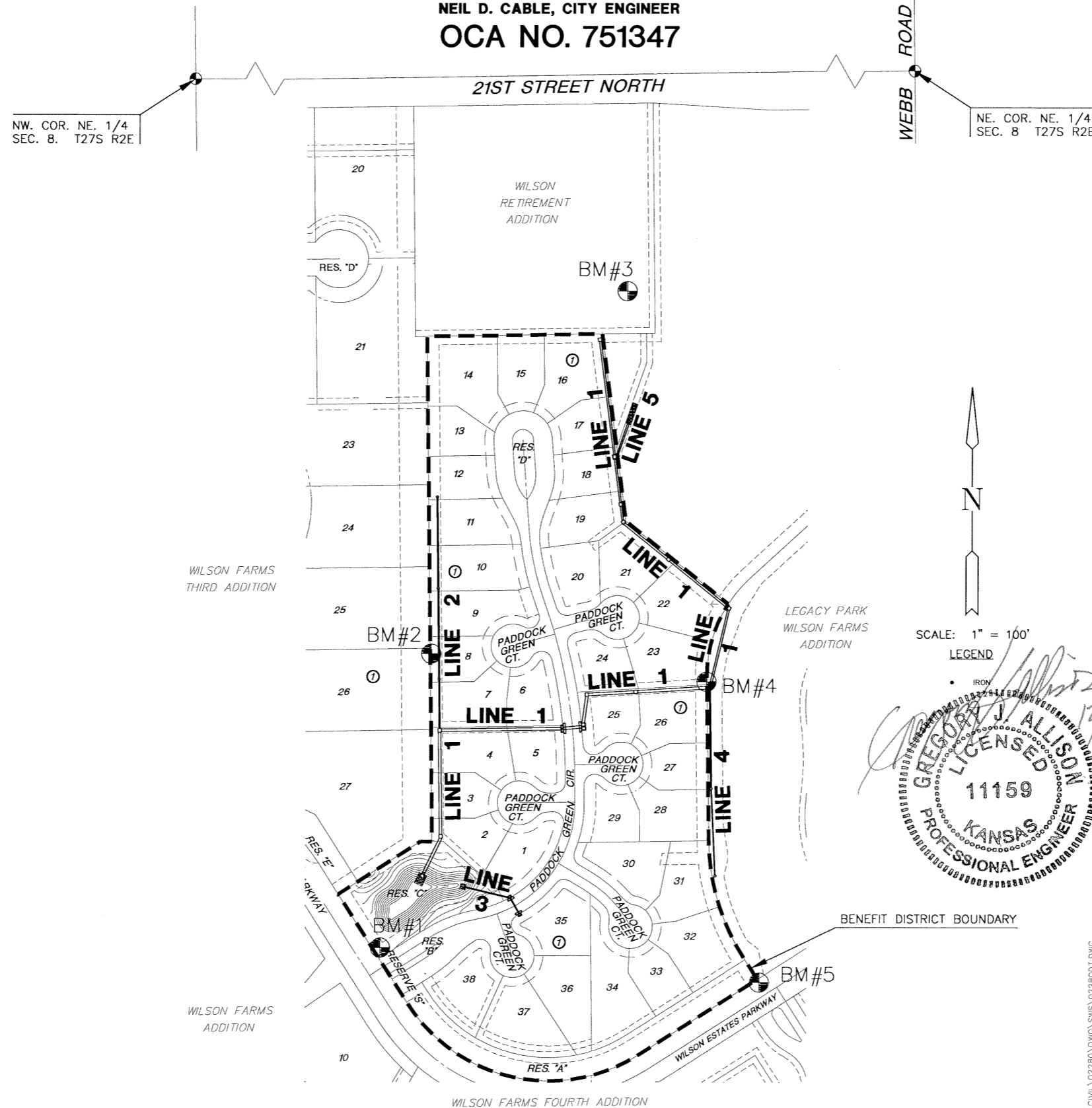
THE CONTRACTOR MUST NOTIFY THE FOLLOWING IN CASE OF EMERGENCY:

COX COMMUNICATIONS (CABLE)	262-0661
WESTAR (ELECTRIC)	261-6512
KANSAS GAS SERVICE (GAS)	832-3101
SBC (TELEPHONE)	800-870-8390
CITY OF WICHITA WATER & SEWER	262-6000
AQUILA (GAS)	946-0096

9. RUBBLE FROM THE REMOVAL OF MISCELLANEOUS STRUCTURES AND EXCESS EXCAVATION WHICH IS TO BE WASTED SHALL BE DISPOSED OF ON SITES TO BE PROVIDED BY THE CONTRACTOR. THESE SITES SHALL BE APPROVED BY THE ENGINEER AS TO SUITABILITY, APPEARANCE AND SITE LOCATION. LOCATIONS THAT, IN THE OPINION OF THE ENGINEER, WILL LEAVE AN UNSIGHTLY APPEARANCE WILL NOT BE APPROVED. ALL DISPOSAL SITES MUST BE APPROVED BY THE KANSAS DEPARTMENT OF HEALTH AND ENVIRONMENT. MATERIAL EITHER STOCKPILED OR DISPOSED OF IN A FLOOD PLAIN WOULD REQUIRE A KANSAS STATE BOARD OF AGRICULTURE PERMIT. ANY MATERIAL DUMPED IN WATERS OF THE UNITED STATES OR WETLANDS IS SUBJECT TO U.S. CORPS OF ENGINEERS PERMITTING REGULATIONS. ANY MATERIAL BURIED OR STOCKPILED BEYOND APPROVED CONSTRUCTION LIMITS WOULD REQUIRE ADDITIONAL ARCHAEOLOGICAL INVESTIGATIONS UNLESS BURIED IN A PREVIOUSLY APPROVED BORROW LOCATION.
10. THE FOLLOWING TYPES OF PIPE WILL BE ALLOWED FOR THE "SWS PIPE": RCP, PVC, OR ADS N-12 WT PIPE AS MANUFACTURED BY ADVANCED DRAINAGE SYSTEM, INC. CONTRACTOR TO SUBMIT MATERIAL SPECIFICATIONS/CERTIFICATIONS TO ENGINEER PRIOR TO CONSTRUCTION.

EARTHWORK SUMMARY	
EXCAVATION	13700 C.Y.
COMP. FILL	16500 C.Y.
*CONT. FURN.	6100 C.Y.

*SEE NOTE 5 ON SHEET 13 FOR INFORMATION ON CONTRACTOR FURNISHED MATERIAL



INDEX TO DRAWINGS

SHEET NO.	DESCRIPTION
1	TITLE SHEET
2-3	MANHOLE DETAILS
4-5	INLET DETAILS
6-8	SWS LINE 1
9	SWS LINE 2
10	SWS LINES 3 & 5
11	SWS LINE 4
12	LAKE WEIR PLAN
13	GRADING & POND NOTES & DETAILS
14	SITE GRADING PLAN
15	EASEMENT GRADING PLAN
16	EROSION CONTROL PLAN
17-20	BMP DETAILS
21	FINAL PLAT

BENCHMARKS

- BM#1- "□" CUT ON THE S END OF THE E HEADWALL OF RCB, 101' S & 20' E OF THE SOUTHERMOST COR. COR. OF LOT 27, BLK 1, WILSON FARMS 3RD ADD. ELEV = 189.38
- BM#2- RR SPIKE IN THE EAST FACE OF A 21" TREE IN THE HEDGEROW NEAR THE MID-POINT OF THE WEST LINE OF BRIGHTON COURTS ADDITION. ELEV = 200.85
- BM#3- "□" CUT ON TOP OF E CURB OF DRIVE INTO ALTERRA RETIREMENT HOME, 72' N & 47' W OF THE SE COR. OF WILSON RETIREMENT ADDITION. ELEV = 204.12
- BM#4- "□" CUT TOP OF RCB END SECTION AT SE COR. OF LOT 23, BLK 1, BRIGHTON COURTS ADDITION. ELEV = 197.07
- BM#5- "□" CUT TOP OF CURB ON THE N SIDE OF WILSON ESTATES PARKWAY AT SE COR. OF BRIGHTON COURTS ADDITION. ELEV = 197.07

<p>MKEC ENGINEERING CONSULTANTS 411 N. WEBB ROAD WICHITA, KS. 67206 316-684-9600</p>	BRIGHTON COURTS ADDITION	
	PROJECT NAME	
	TITLE SHEET	
	SHEET TITLE	
DFL	DMU	GJA
DESIGN BY:	DRAWN BY:	CHECKED BY:
DECEMBER 2003	02280	1 / 21
DATE	JOB NO.	SHEET/OF

H:\CIVIL\02280\DWG\SWS\0228001.DWG