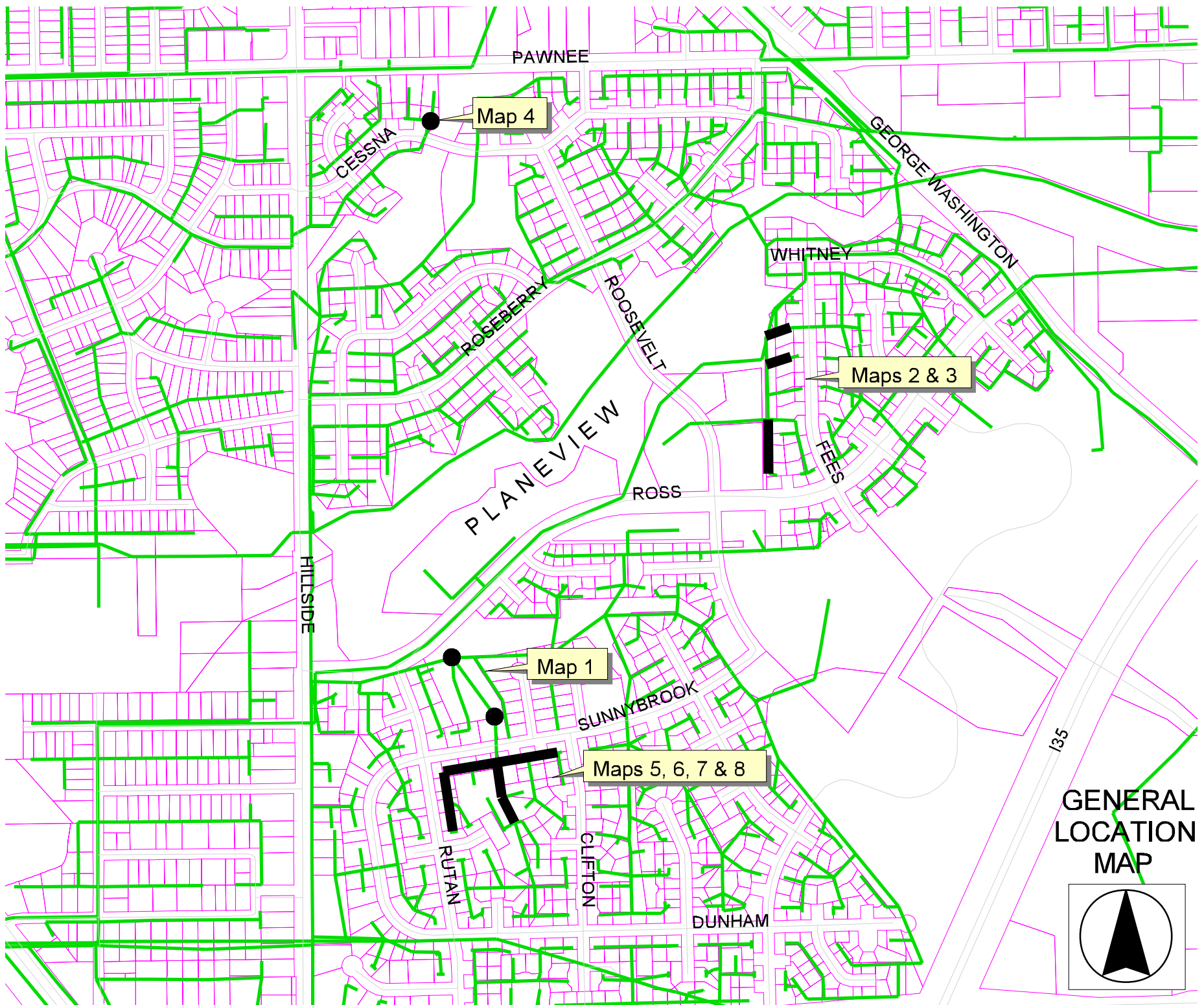


PLANEVIEW GRANT FUNDED SANITARY SEWER RECONSTRUCTION PHASE 2

OCA # 620378 / 468-83675

<u>MAP NO.</u>	<u>PIPE SIZE</u>	<u>UPSTREAM MANHOLE</u>	<u>DOWNSTREAM MANHOLE</u>	<u>UPSTREAM INVERT ELEVATION</u> <u>(City Datum)</u>	<u>DOWNSTREAM INVERT ELEVATION</u> <u>(City Datum)</u>	<u>LENGTH (FT.)</u>
1	8"	5744-683	5744-467	Manhole Work		
2	6"	5744-219	5744-218	121.00	116.50	310
	6"	5744-223	5744-216	N/A	114.40	154
3	8"	5744-215	5744-213	106.00	105.60	151
4	6"	5744-452		Manhole Work		
5	8"	5744-686	5744-685	121.20	113.00	166
	8"	5744-685	5744-684	113.00	108.00	187
6	6"	5744-724	5744-723	111.20	109.70	175
	6"	5744-723	5744-684	109.70	107.70	182
7	6"	5744-736	5744-684	123.00	107.70	311
8	6"	5744-742	5744-737	132.50	128.10	175
	6"	5744-737	5744-736	128.10	123.00	175

Total linear feet = ----- 1986



<u>Bid Items by Site Reference</u>	Planeview Grant Funded Sanitary Sewer Reconstruction, Phase 2									
	<u>Site 1</u>	<u>Site 2</u>	<u>Site 3</u>	<u>Site 4</u>	<u>Site 5</u>	<u>Site 6</u>	<u>Site 7</u>	<u>Site 8</u>	<u>Totals</u>	
6" Pipe Removed and 8" Pipe Installed		464				357	311	350	1482	lf
8" Pipe Removed and Replaced			151		353				504	lf
Reconstruct Outside Drop	1				1				2	ea
Construct Outside Drop						1			1	ea
Construct Shallow Manhole		1		1				1	3	ea
Construct Standard Manhole		1	1		1				3	ea
Adjust Manhole to Grade							1		1	ea
Replace Manhole Frame & Cover	2	2	3		1	1			9	ea
Rework Manhole Bench & Invert	1	2	3		1	1	1		9	ea
Concrete Approach Removed and Replaced						20			20	lf
Concrete Sidewalk Removed and Replaced						32			32	lf
Soil Erosion BMPs									1	ls
Site Clearing & Restoration									1	ls

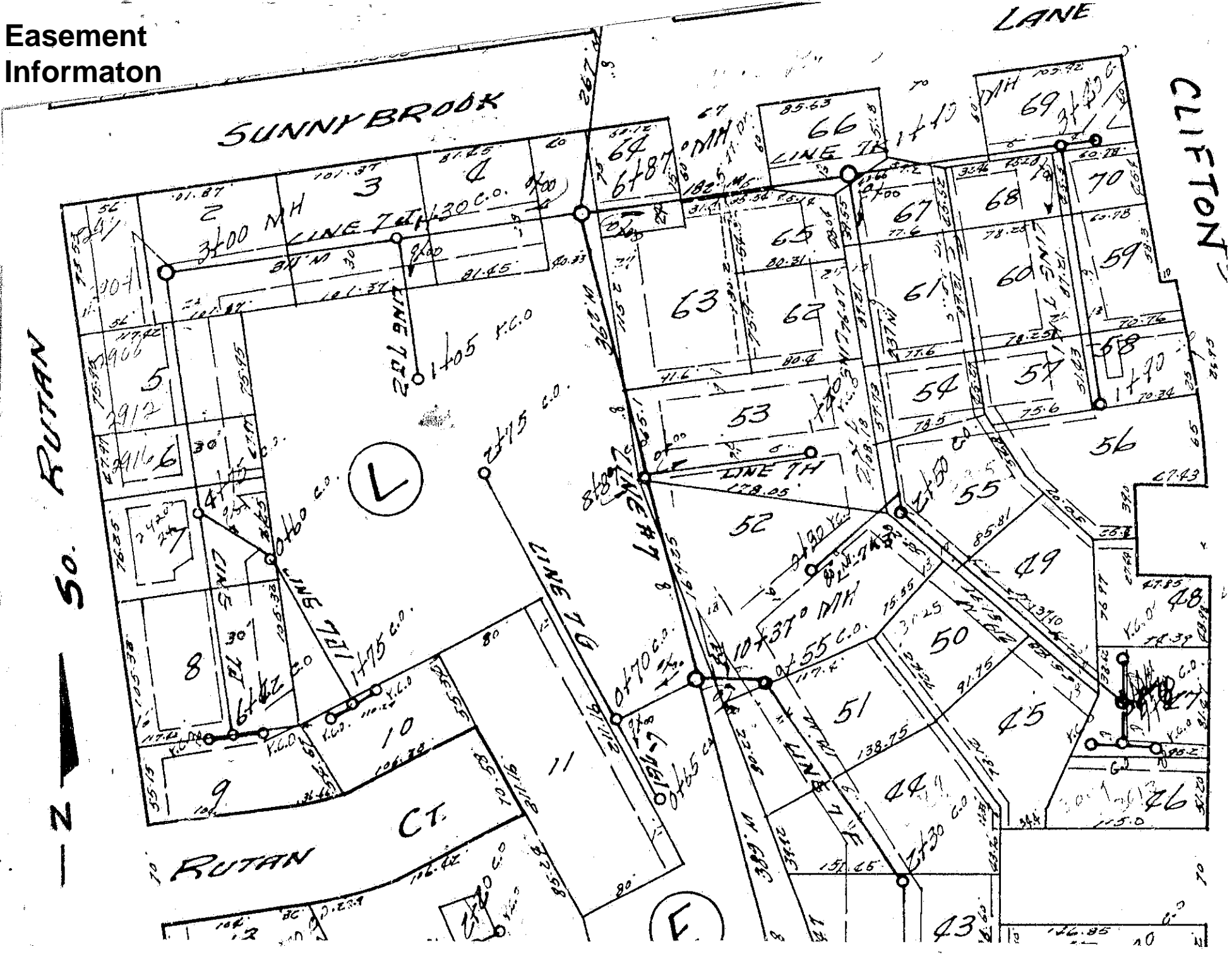
SPECIAL PROJECT NOTES

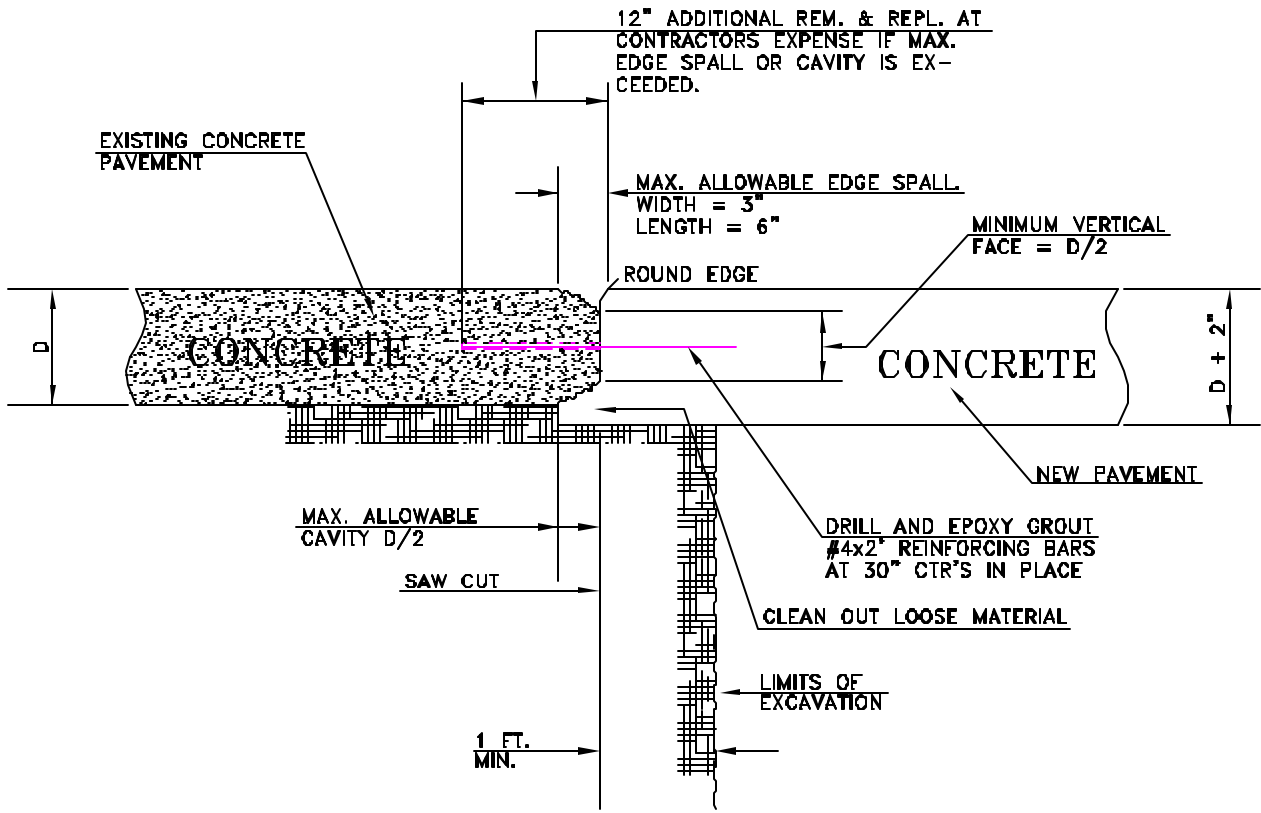
Pipe Reaming or Pipe Bursting will be allowed as an alternate method of construction on any area within this project.
All construction must meet City of Wichita Standard Specifications.

The Contractor may, at his option, move pipe or manholes within the easement. If Contractor chooses to relocate any line, he shall obtain location approval from the Public Works Engineer and provide his own construction staking. There will be no additional payments to the Contractor for any relocation.

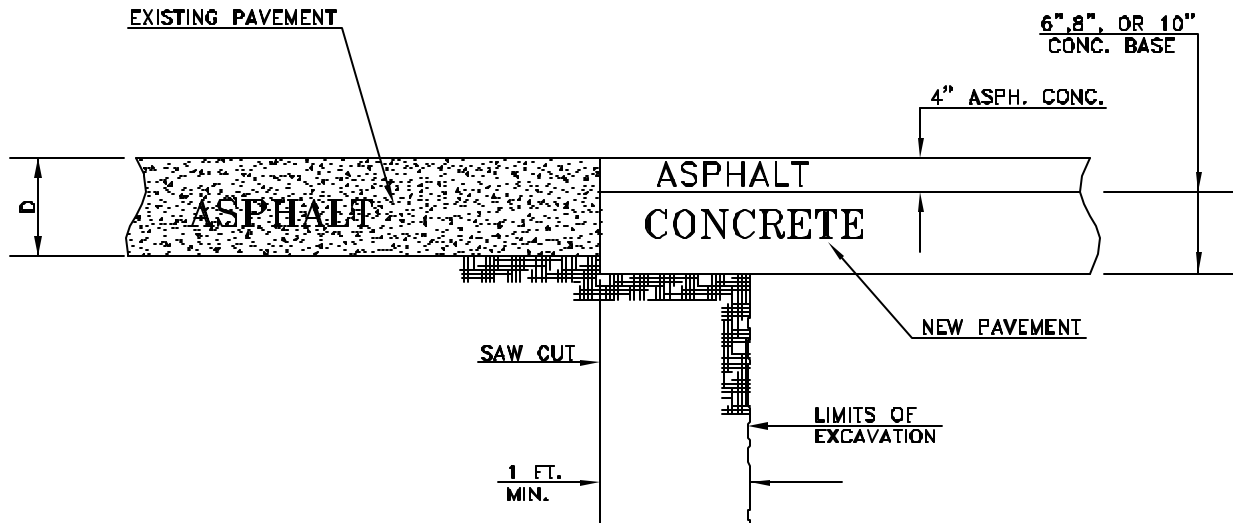
If Contractor's proposal to relocate or abandon a portion of the sewer main would require reconstruction of a portion of a service lateral outside of the easement, Contractor shall obtain written permission from the homeowner prior to reconstructing the service lateral. Easement information is included in this bid packet.

Easement Informaton





**UTILITY CUT REPAIR
(CONCRETE PAVEMENT REMOVAL EDGE DETAIL)**



**UTILITY CUT REPAIR
(FULL DEPTH ASPHALT CONCRETE PATCH)**