

MH # 5744-684
Replace Manhole Frame & Cover
Rework Manhole Bench & Invert
Reconstruct Outside Drop for
line coming into MH from the south
Approx depth = 12.0 ft

Remove and replace 353 lf of 8" pipe
from MH 5744-686 to MH 5744-684

(removal and replacement of unpaved drive
areas shall be incidental to the pipe replacement)

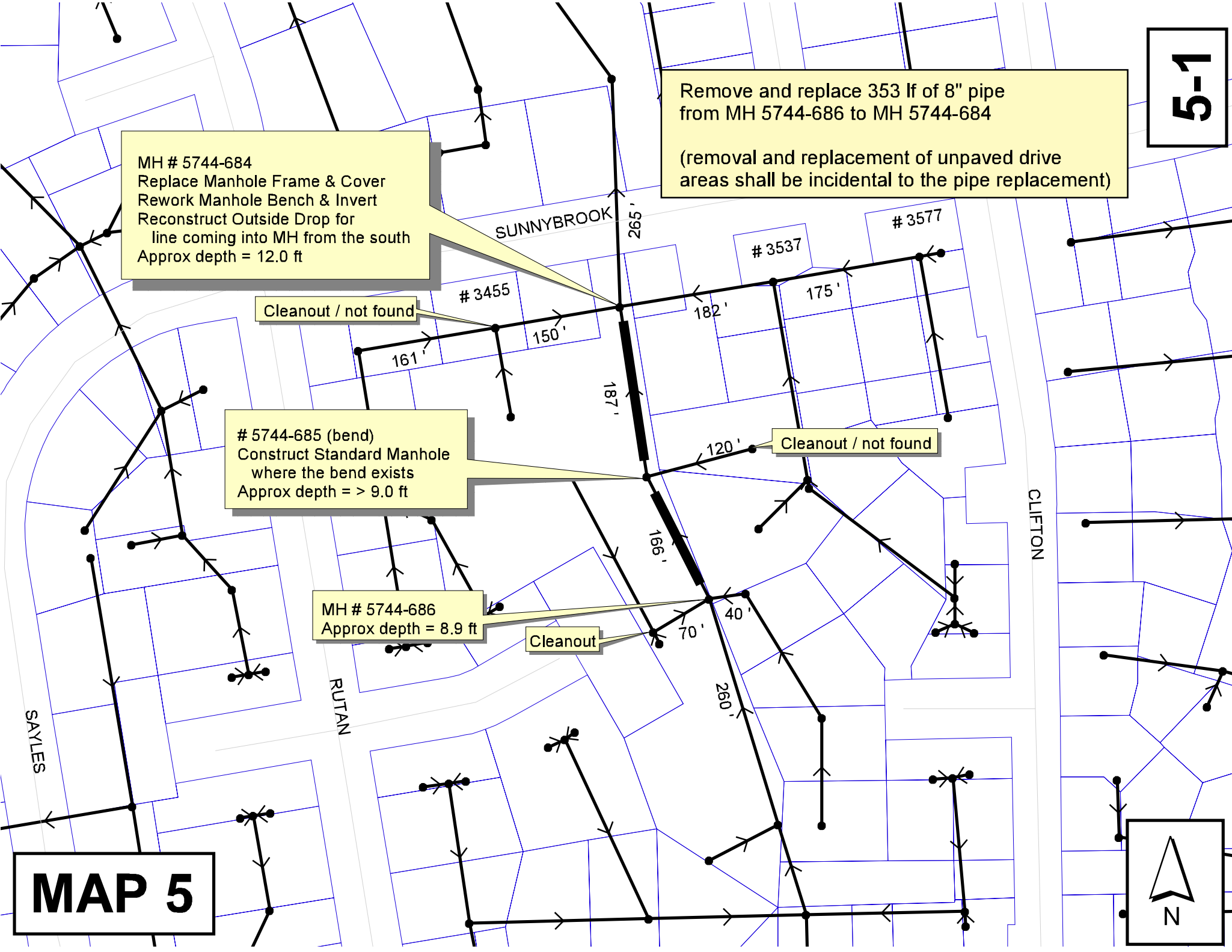
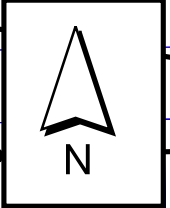
5744-685 (bend)
Construct Standard Manhole
where the bend exists
Approx depth = > 9.0 ft

MH # 5744-686
Approx depth = 8.9 ft

Cleanout / not found

Cleanout / not found

Cleanout



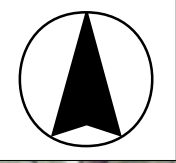
5-2

SUNNYBROOK

CLIFTON

RUTAN

Aerial View



Television Inspection Master Report

10/1/2003
9:18:41AM

US Manhole: 5744-686 3037 S CLIFTON ST
DS Manhole: 5744-685CO (bend)

Date Insp: 7/7/2003

Basin: C01B

Dir Televised: Upstream To Downstream

Pipe Information

Shape: Round	Length Status:	Project No.: I-059
Dia/Ht Width: 8	Material: VCP	Index:
Length: 166.0	Slope: 4.940	Surface:
Pipe Sec Length:	Comment:	

Inspection Information

Crew: 694	Percent Full: 10	Tape ID: DVD-09;PROG-01
Weather: Sunny	Purpose: TV Existing Line	Counter Start: 0;00
Surface Cond: N/A	Flow: Normal Flow	Counter Stop:
Dyed Test: No		

Obs. #	VTR Counter Comment	Dist	Location	Description	Rating	Obsrvd (gpm)	Est. (gpm)	Ratings		
								Struct	Clean	Remain (gpm)
1		0.0	US Manhole / 5744-686							
2		1.0	Crown	Crack-Radial	3		0.004	5	0	0.004
3		5.0	Quad 4 / U-Lt	Crack-Radial	3		0.004	5	0	0.004
4		8.0	Crown	Crack-Radial	3		0.004	5	0	0.004
5		11.0	Crown	Crack-Radial	3		0.004	5	0	0.004
6		23.0	Crown	Crack-Horizontal	3		0.004	5	0	0.004
7		23.0	Invert	Broken Pipe	3		0.010	60	0	0.010
8		26.0	Crown	Crack-Horizontal	3		0.004	5	0	0.004
9		29.0	Quad 3 / L-Lt	Crack-Horizontal	3		0.004	5	0	0.004
10		35.0	Quad 4 / U-Lt	Crack-Horizontal	2		0.002	2	0	0.002
11		38.0	Crown	Crack-Horizontal	3		0.004	5	0	0.004
12		41.0	Crown	Crack-Radial	3		0.004	5	0	0.004
13		53.0	Quad 3 / L-Lt	Crack-Horizontal	2		0.002	2	0	0.002
14		56.0	Quad 3 / L-Lt	Crack-Radial	3		0.004	5	0	0.004
15		58.0	Quad 3 / L-Lt	Crack-Radial	3		0.004	5	0	0.004
16		62.0	Quad 1 / U-Rt	Crack-Horizontal	2		0.002	2	0	0.002
17		65.0	Crown	Crack-Horizontal	3		0.004	5	0	0.004
18		68.0	Crown	Crack-Radial	3		0.004	5	0	0.004
19		71.0	Crown	Crack-Radial	3		0.004	5	0	0.004
20		73.0	Crown	Crack-Radial	3		0.004	5	0	0.004
21		74.0	Quad 1 / U-Rt	Crack-Radial	3		0.004	5	0	0.004
22		79.0	Crown	Crack-Radial	3		0.004	5	0	0.004
23		86.0	Quad 1 / U-Rt	Crack-Radial	3		0.004	5	0	0.004
24		89.0	Crown	Crack-Horizontal	2		0.002	2	0	0.002
25		95.0	Crown	Broken Pipe	3		0.010	60	0	0.010
26		98.0	Crown	Crack-Radial	3		0.004	5	0	0.004
27		101.0	Crown	Crack-Horizontal	3		0.004	5	0	0.004
28		104.0	Quad 2 / L-Rt	Crack-Radial	3		0.004	5	0	0.004
29		107.0	Crown	Crack-Radial	3		0.004	5	0	0.004
30		110.0	Quad 3 / L-Lt	Broken Pipe	3		0.010	60	0	0.010
31		125.0	Quad 1 / U-Rt	Crack-Horizontal	2		0.002	2	0	0.002
32		128.0	Quad 1 / U-Rt	Broken Pipe	5		0.060	100	0	0.060
33		131.0	Crown	Crack-Radial	3		0.004	5	0	0.004
34		134.0	Crown	Crack-Horizontal	3		0.004	5	0	0.004
35		137.0	Crown	Crack-Horizontal	3		0.004	5	0	0.004
36		140.0	Invert	Crack-Horizontal	3		0.004	5	0	0.004
37		143.0	Crown	Broken Pipe	3		0.010	60	0	0.010

5-3

Television Inspection Master Report

10/1/2003
9:18:41AM

US Manhole: 5744-686 3037 S CLIFTON ST Date Insp: 7/7/2003 Basin: C01B
DS Manhole: 5744-685CO (bend)

38	147.0	Quad 4 / U-Lt	Crack-Horizontal	3	0.004	5	0	0.004
39	149.0	Crown	Crack-Horizontal	3	0.004	5	0	0.004
40	150.0	Invert	Other					0.000
41	158.0	Crown	Crack-Radial	3	0.004	5	0	0.004
42	158.0	Crown	Crack-Radial	3	0.004	5	0	0.004
43	162.0	Joint	Roots	4	0.010	10	25	0.010
44	163.0	West	Wye Service	3	0.000	2	0	0.000
			wye is packed full of roots					
45	164.0	Quad 4 / U-Lt	Broken Pipe	3	0.010	60	0	0.010
46	166.0	THIS IS 5744-685CO (where the pipe bends)						

5-4

Television Inspection Master Report

10/1/2003
9:18:41AM

US Manhole: 5744-685CO (bend)
DS Manhole: 5744-684

Date Insp: 7/7/2003

Basin: C01B

3501 E SUNNYBROOK ST

Dir Televised: Upstream To Downstream

Pipe Information

Shape: Round	Length Status:	Project No.: I-059
Dia/Ht Width: 8	Material: VCP	Index:
Length: 187.0	Slope: 2.674	Surface:
Pipe Sec Length: Comment:		

Inspection Information

Crew: 694	Percent Full: 15	Tape ID: D-09;PROG-2
Weather: Sunny	Purpose: TV Existing Line	Counter Start: 0;0
Surface Cond: Fences	Flow: Normal Flow	Counter Stop:
Dyed Test: No		

Obs. #	VTR Counter Comment	Dist	Location	Description	Rating	Obsrvd (gpm)	Est. (gpm)	Ratings Struct	Clean	Remain (gpm)
1		0.0	US cleanout/bend 5744-685CO							0.000
2		1.0	Crown	Crack-Radial	3		0.004	5	0	0.004
3		7.0	Quad 1 / U-Rt	Crack-Horizontal	2		0.002	2	0	0.002
4		10.0	Quad 1 / U-Rt	Crack-Horizontal	3		0.004	5	0	0.004
5		13.0	Crown	Crack-Horizontal	3		0.004	5	0	0.004
6		16.0	Crown	Crack-Horizontal	3		0.004	5	0	0.004
7		19.0	Quad 2 / L-Rt	Broken Pipe	4		0.030	78	0	0.030
8		19.0	Crown	Crack-Radial	3		0.004	5	0	0.004
9		22.0	Crown	Crack-Radial	3		0.004	5	0	0.004
10		25.0	Quad 4 / U-Lt	Crack-Horizontal	3		0.004	5	0	0.004
11		28.0	Quad 3 / L-Lt	Crack-Radial	2		0.002	2	0	0.002
12		31.0	Crown	Crack-Horizontal	3		0.004	5	0	0.004
13		34.0	Crown	Crack-Horizontal	3		0.004	5	0	0.004
14		37.0	Crown	Broken Pipe	3		0.010	60	0	0.010
15		40.0	Crown	Broken Pipe	3		0.010	60	0	0.010
16		43.0	Crown	Crack-Horizontal	3		0.004	5	0	0.004
17		46.0	Quad 2 / L-Rt	Crack-Radial	3		0.004	5	0	0.004
18		49.0	Crown	Crack-Horizontal	2		0.002	2	0	0.002
19		52.0	Quad 2 / L-Rt	Crack-Horizontal	3		0.004	5	0	0.004
20		55.0	Crown	Crack-Horizontal	3		0.004	5	0	0.004
21		61.0	Crown	Crack-Radial	2		0.002	2	0	0.002
22		76.0	Crown	Broken Pipe	3		0.010	60	0	0.010
23		77.0	East	Wye Service	3		0.000	2	0	0.000
3517 SUNNYBROOK										
24		79.0	Crown	Crack-Horizontal	3		0.004	5	0	0.004
25		82.0	Crown	Crack-Horizontal	3	3.000	0.004	5	0	3.000
26		85.0	Crown	Crack-Radial	3		0.004	5	0	0.004
27		91.0	Crown	Crack-Horizontal	3		0.004	5	0	0.004
28		94.0	Crown	Crack-Horizontal	3		0.004	5	0	0.004
29		97.0	Crown	Broken Pipe / shifting	3		0.010	60	0	0.010
30		100.0	Crown	Broken Pipe	3		0.010	60	0	0.010
31		103.0	Crown	Crack-Horizontal	3		0.004	5	0	0.004
32		111.0	East	Wye Service	1		0.000	0	0	0.000
3505 S. CLUFTON										
33		115.0	Crown	Crack-Radial	3		0.004	5	0	0.004
34		118.0	Quad 2 / L-Rt	Crack-Radial	3		0.004	5	0	0.004
35		124.0	Crown	Crack-Radial	3		0.004	5	0	0.004

5-5

Television Inspection Master Report

10/1/2003
9:18:41AM

US Manhole: 5744-685CO (bend)
DS Manhole: 5744-684

Date Insp: 7/7/2003

Basin: C01B

36	130.0	Quad 3 / L-Lt	Crack-Radial	3	0.004	5	0	0.004
37	137.0	East	Wye Service	2	0.000	0	0	0.000
3525 S. CLIFTON								
38	139.0	Quad 3 / L-Lt	Crack-Radial	3	0.004	5	0	0.004
39	142.0	Quad 2 / L-Rt	Crack-Radial	3	0.004	5	0	0.004
40	151.0	Quad 3 / L-Lt	Crack-Radial	3	0.004	5	0	0.004
41	157.0	Crown	Crack-Radial	3	0.004	5	0	0.004
42	160.0	Crown	Crack-Horizontal	3	0.004	5	0	0.004
43	163.0	Quad 1 / U-Rt	Crack-Radial	3	0.004	5	0	0.004
44	177.0	Invert	Sag					0.000
30% FLOW / sag begins								
45	179.0	Invert	Sag					
40% FLOW								
46	181.0	Quad 1 / U-Rt	Broken Pipe/ missing pipe		0.060	100	0	0.060
47	182.0	Invert	Other					0.000

WE HAVE A METAL TUBE IN THE LINE THAT NEEDS TO BE REMOVED. ALSO WE HAVE OFFSET JOINT.
CAN'T GET PAST THE OFFSET JOINT

REVERSE SETUP:

- 0.00 Downstream MH 5744-684 / tv against the flow
- 3.0 Outside Drop
- 6.0 Offset joint / same place as camera stopped above

5-6