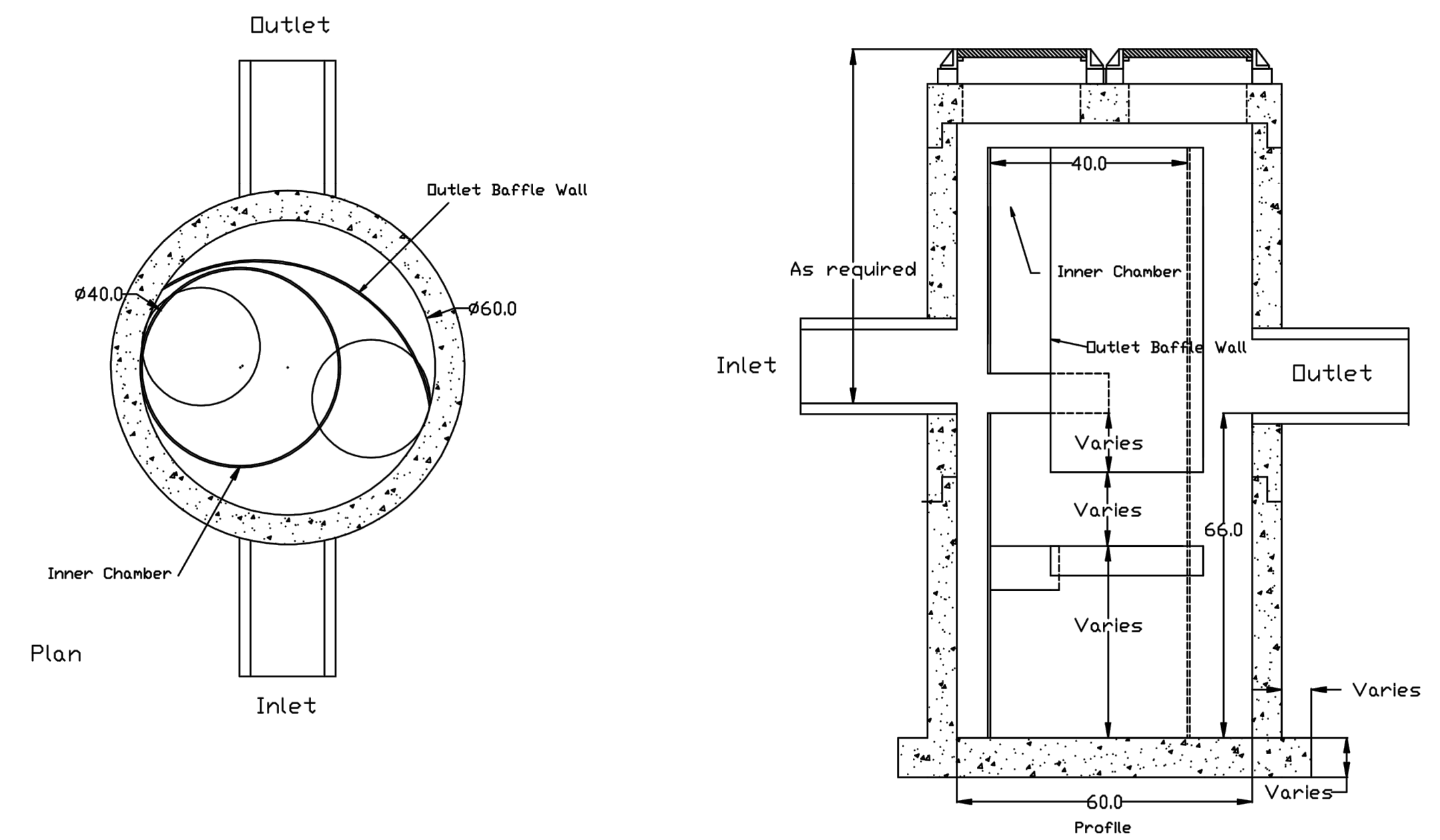


\*\* See Sump Depth Below

HG-1  
(NOT TO SCALE)

SUMP DEPTH TABLE			
STRUCTURE	STORM SEWER LINE NO.	STATION	MIN. SUMP DEPTH
# HG-1	6	1+60.04	7'-2"

# Note: Contractor shall place 1/2" non-extruding expansion joint filler between the rim of the Hydroguard and any adjoining concrete pavement.



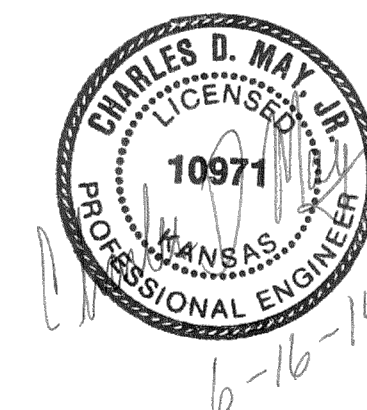
HG-2  
(NOT TO SCALE)

SUMP DEPTH TABLE			
STRUCTURE	STORM SEWER LINE NO.	STATION	MIN. SUMP DEPTH
# HG-2	9	0+58.50	5'-6"

U.S. Patent No. 6,951,619.

Dimensions in inches  
Permanent Pool Volume = 2500 US gallons  
The Hydroguard must be cleaned after the construction period if it is used as a sediment and erosion control measure  
The Hydroguard should be inspected once per year for stabilized sites  
Inspection will determine the maintenance frequency (annual maintenance or once every two years typical for stabilized sites)  
Sites with unstable conditions (exposed soil or materials storage) will require more frequent inspection and maintenance

Hydroworks, LLC  
50 S. 21st St., Kenilworth, NJ 07033  
Phone: 888-290-7900 Fax: 888-783-7271  
Web: www.hydroworks.com



CITY OF WICHITA			
HYDROGUARD DETAILS			
		8615 W. Frazier Lane, Suite 2 Wichita, KS 67212 Phone: 316-722-4472	
DESIGNED	ABS	DRAWN	JWB
CHECKED	ABS/CDM	DATE	02/14
SCALE		SHEET NO.	
No Scale		59	