

EASEMENT GRADING DETAILS

- = AREAS TO BE GRADED
- H.P. = HIGH POINT
- M.E. = MATCH EXISTING

**Graded widths and slopes may vary as approved by the Engineer to minimize conflict with existing trees.

Easement Grading will be bid on a lump sum basis for grading the easements to the profile and elevations shown on the Easement Grading Plan (this sheet). Approximate quantities of earthwork for easement grading are shown below. These approximate quantities are given for information only. The Contractor should verify the quantities when preparing the proposal.

Cut 1448 C.Y. (Approximate)
Fill 240 C.Y. (Approximate)

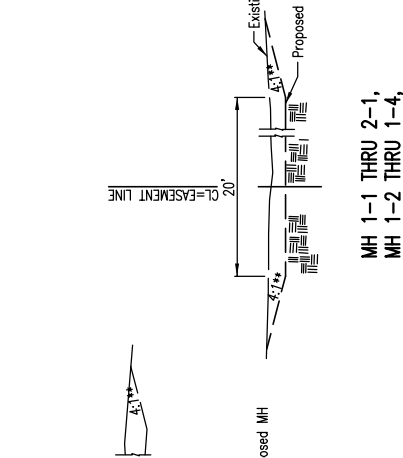
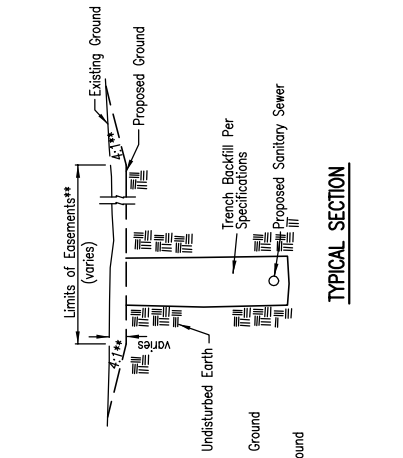
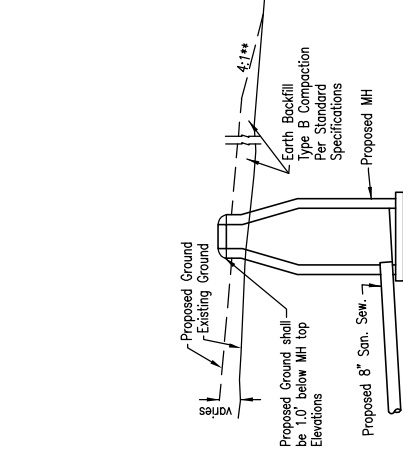
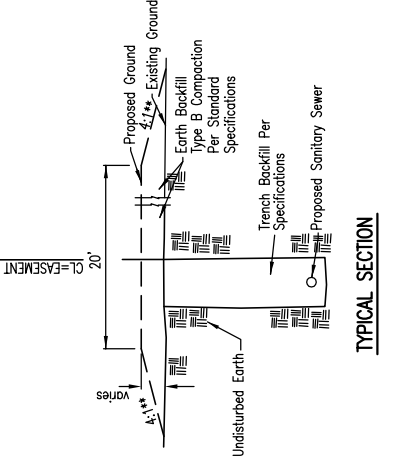
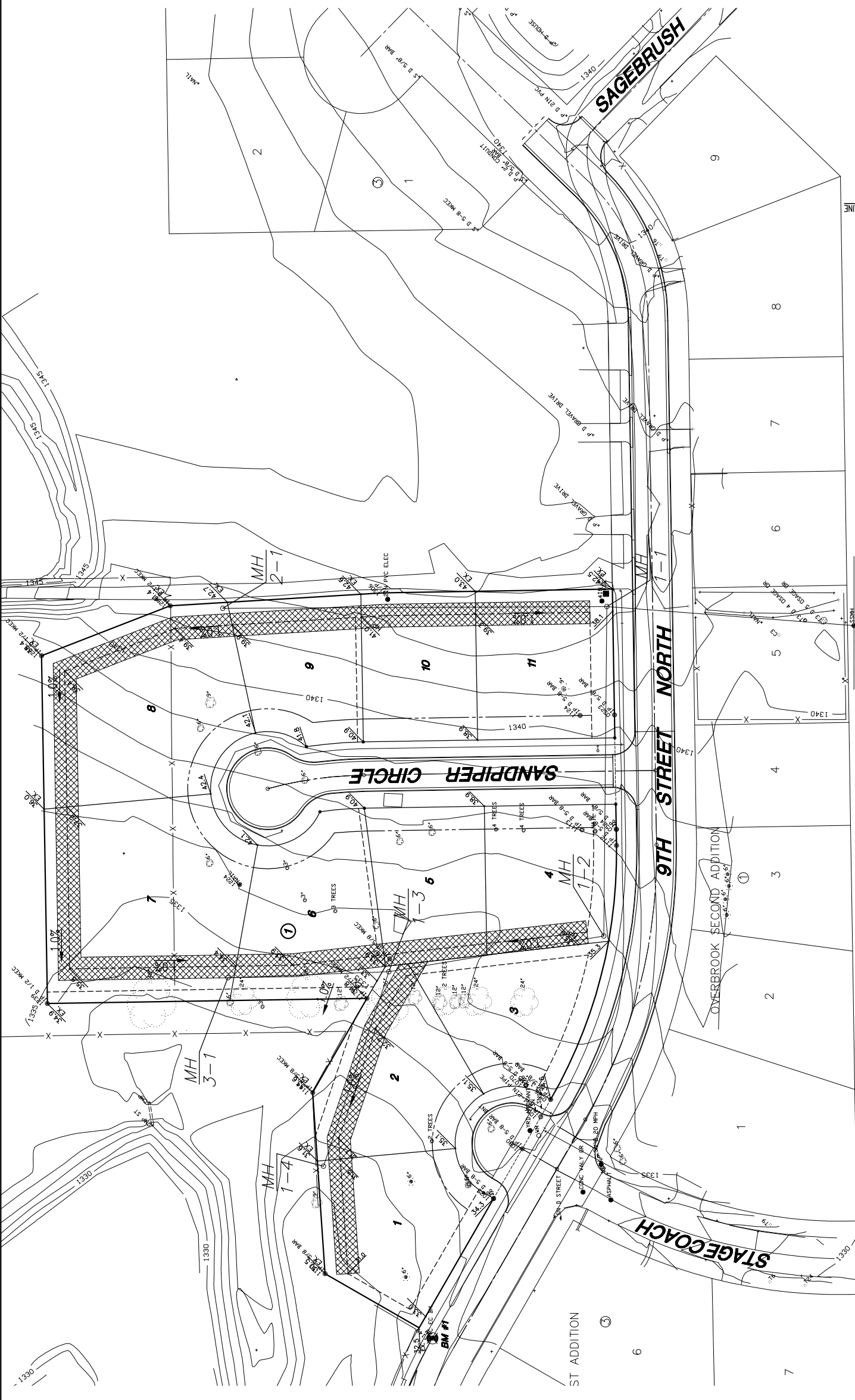
EXCESS MATERIAL TO BE WASTED ON SITE

MKEC
ENGINEERING
CONSULTANTS
411 N. WEBB ROAD
WICHITA, KS. 67206
316 - 684 - 9600

PROJECT NAME
**CRESTVIEW COUNTRY CLUB
ESTATES OVERBROOK 5TH ADD.**

SHEET TITLE
EASEMENT GRADING DETAILS

DESIGN BY: **MKEC**
DRAWN BY: **JDAC**
CHECKED BY: **JTC**
DATE: **MARCH 2004**
JOB NO.: **03120**
SHEET/OF: **6 / 9**



**MH 1-1 THRU 2-1,
MH 1-2 THRU 1-4,
& MH 1-3 THRU 3-1**
SPECIAL CUT SECTION

"CUT" SITUATIONS

TYPICAL PROFILE

"FILL" SITUATIONS