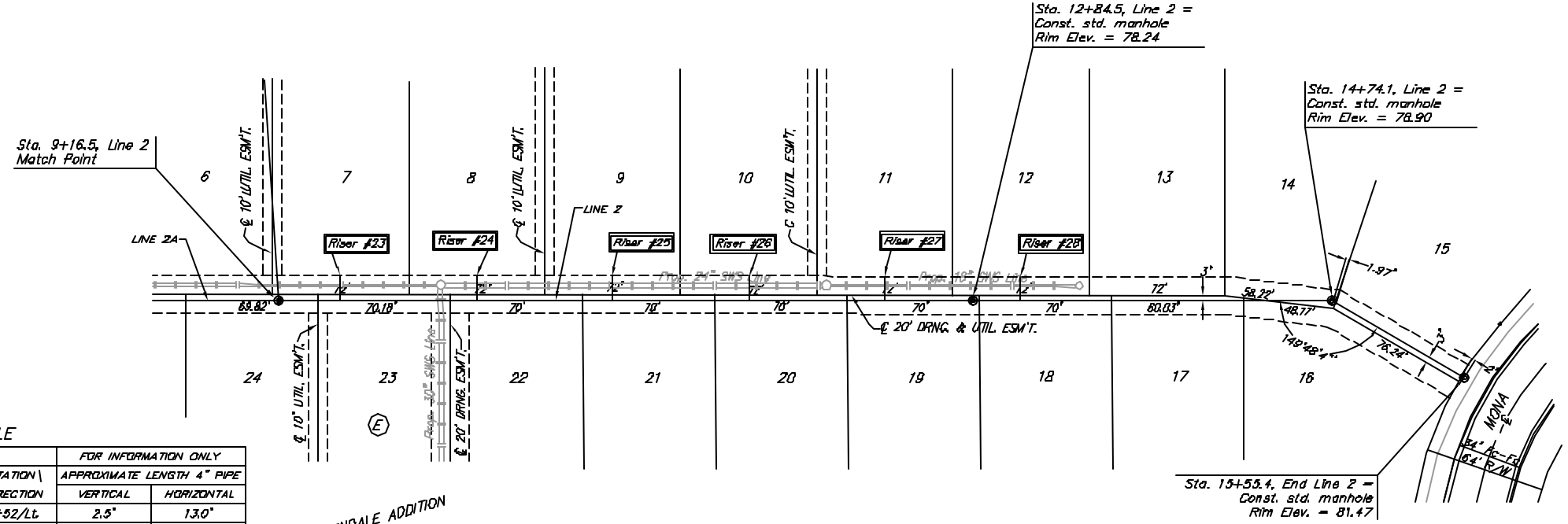


BENCHMARK:
 CITY OF WICHITA BENCHMARK DISC,
 HYDRAULIC AND 55TH STREET SOUTH
 42.00' N. OF C
 40.70' W. OF C
 3.70' N. OF C OF POWER POLE
 58.20' NW. OF SE. COR., SEC. 21,
 TWP. 28-S, R-1-E
 ELEV. = 78.19 CITY DATUM
 (1263.59 NGVD29)

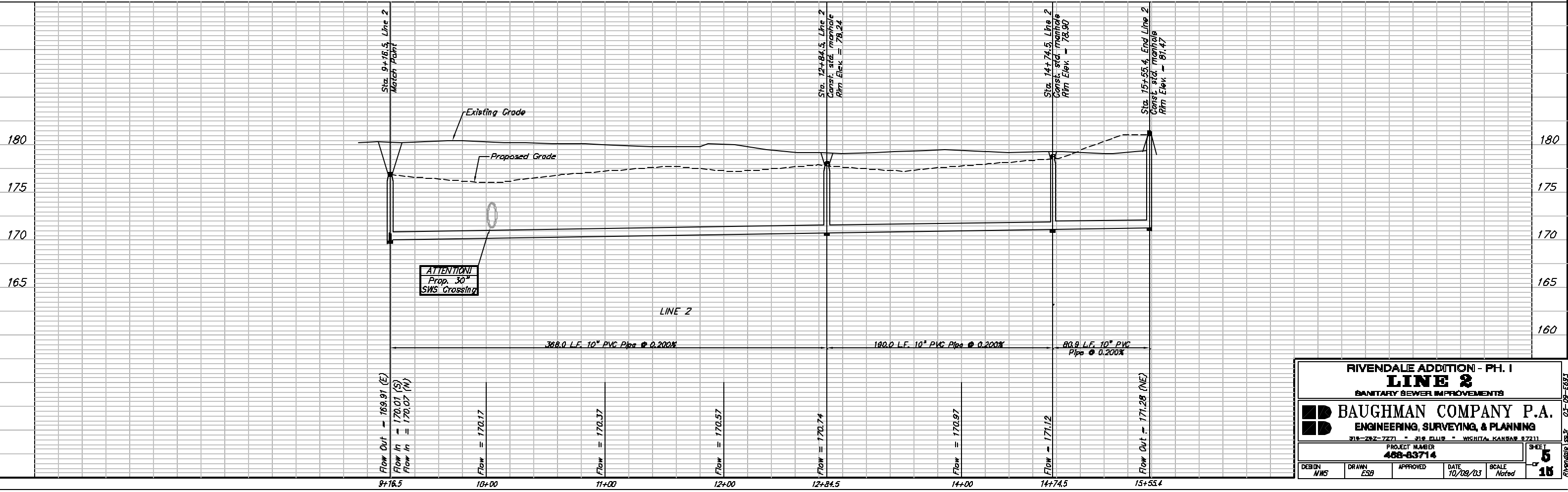
Scale: 1" = 40' Horizontal
 1" = 5' Vertical
 • = Iron



SEWER SERVICE TABLE

NUMBER	TYPE	LOCATION			FOR INFORMATION ONLY		
		LOT NO.	BLOCK NO.	LINE NO.	STATION DIRECTION	APPROXIMATE LENGTH 4" PIPE	VERTICAL
23	8" X 4" Tee Saddle	7	E	2	9+52/Lt	2.5"	13.0"
24	8" X 4" Tee Saddle	8	E	2	10+24/Lt	2.5"	13.0"
25	8" X 4" Tee Saddle	9	E	2	10+96/Lt	3.0"	13.0"
26	8" X 4" Tee Saddle	10	E	2	11+68/Lt	3.5"	13.0"
27	8" X 4" Tee Saddle	11	E	2	12+40/Lt	3.0"	13.0"
28	8" X 4" Tee Saddle	12	E	2	13+12/Lt	3.0"	13.0"

NOTE: Vertical Riser Pipe shall be extended to 2' minimum above ground water elevation and 4' maximum below proposed ground elevation.



RIVENDALE ADDITION - PH. I
LINE 2
 SANITARY SEWER IMPROVEMENTS

BAUGHMAN COMPANY P.A.
 ENGINEERING, SURVEYING, & PLANNING

318-282-7271 • 318 CLUIS • WICHITA, KANSAS 67211

PROJECT NUMBER
468-03714

DESIGN: NWS DRAWN: ESB APPROVED: [Signature] DATE: 10/08/03 SCALE: Noted

SHEET **5** OF **16**

Rivendale 158.37 03-09-0503