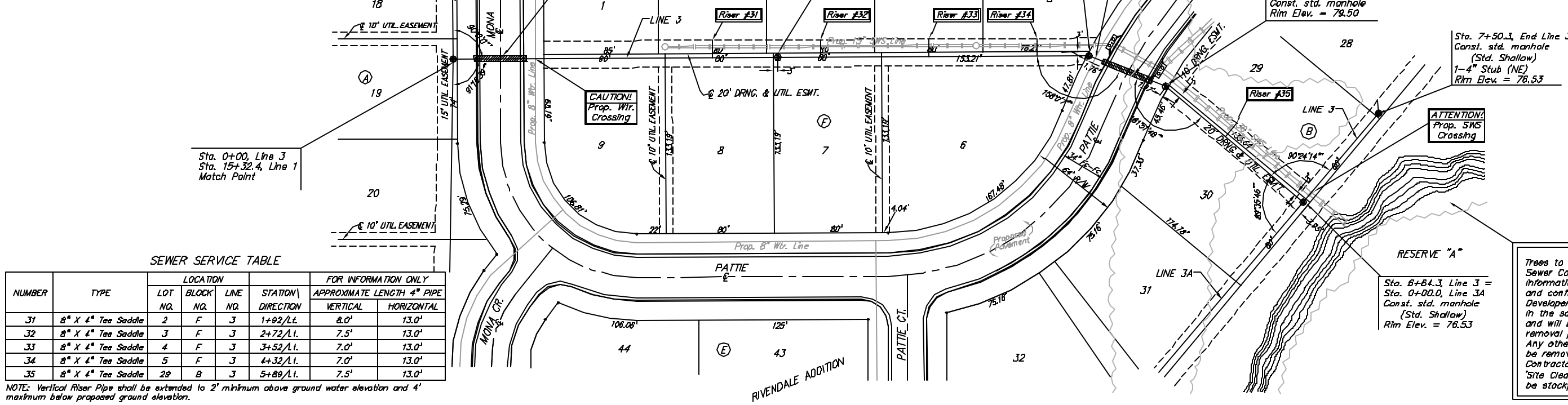


Benchmark #1
 City of Wichita Benchmark Disc,
 Hydraulic and 55th Street South,
 42.00' North of Centerline, 40.70'
 West of Centerline, 3.70' North of
 centerline of Power Pole, 58.20'
 Northwest of Southeast Corner, Sec.
 21, Twp. 28-S, R-1-E.
 Elev. = 76.19 City Datum
 Elev. = 1263.59 (NGVD29)

Scale: 1" = 40' Horizontal
 1" = 5' Vertical
 = Iron

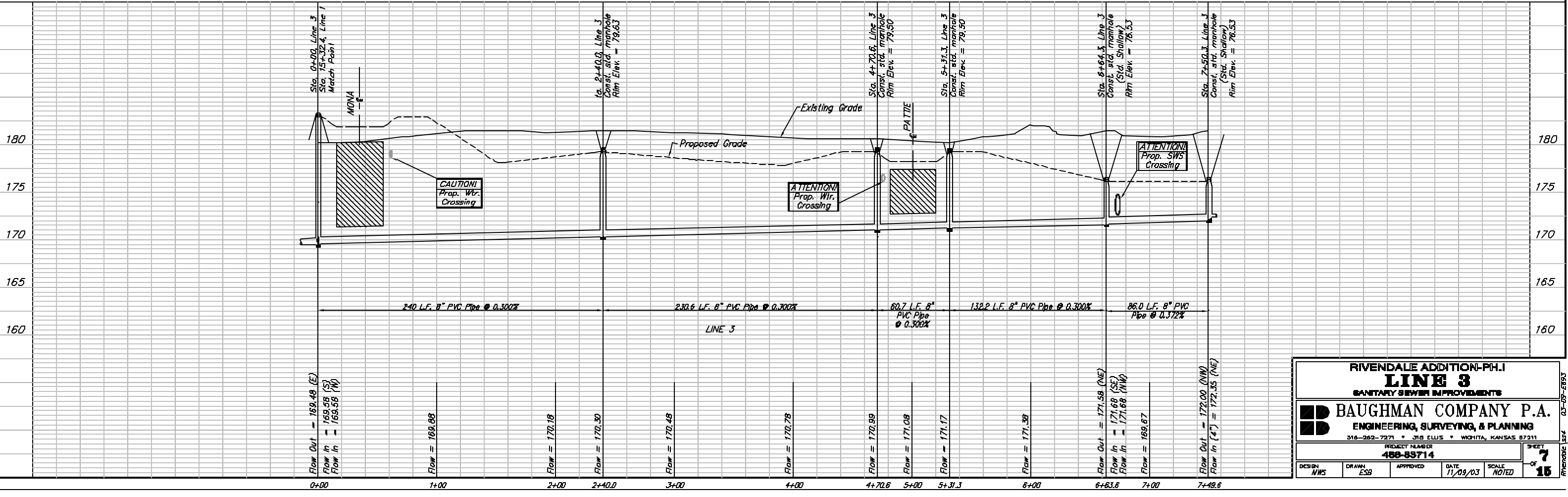


SEWER SERVICE TABLE

NUMBER	TYPE	LOCATION			FOR INFORMATION ONLY		
		LOT NO.	BLOCK NO.	LINE NO.	STATION DIRECTION	APPROXIMATE LENGTH 4" PIPE VERTICAL	HORIZONTAL
31	8" X 4" Tee Saddle	2	F	3	1+02/L.L.	8.0'	13.0'
32	8" X 4" Tee Saddle	3	F	3	2+72/L.L.	7.5'	13.0'
33	8" X 4" Tee Saddle	4	F	3	3+52/L.L.	7.0'	13.0'
34	8" X 4" Tee Saddle	5	F	3	4+32/L.L.	7.0'	13.0'
35	8" X 4" Tee Saddle	29	B	3	5+89/L.L.	7.5'	13.0'

NOTE: Vertical Riser Pipe shall be extended to 2' minimum above ground water elevation and 4' maximum below proposed ground elevation.

Trees to be removed prior to Sanitary Sewer Construction. Trees are shown for information only. Contractor shall visit site and confirm trees have been removed. Developer will clear all brush and tree piles in the southern half of the development and will be responsible for their complete removal prior to start of construction. Any other trees that remain and need to be removed shall be removed by the Contractor. Cost shall be incidental to 'Site Clearing and Restoration'. Trees may be stockpiled on Site.



RIVENDALE ADDITION-PH.I
LINE 3
 SANITARY SEWER IMPROVEMENTS

BAUGHMAN COMPANY P.A.
 ENGINEERING, SURVEYING, & PLANNING
 316-282-7271 • 316 ELLIS • WICHITA, KANSAS 67211

PROJECT NUMBER: **488-83714**

DESIGN: NWS DRAWN: ESB APPROVED: _____ DATE: 11/09/03 SCALE: NOTED

SHEET **7** OF **15**