

STORM WATER SEWER #595

to serve

RIVENDALE ADDITION - PH. I

CITY OF WICHITA, KANSAS

Neil Cable, P.E. City Engineer

Project Number

468-83719

O.C.A. Number

751349

Sheet Index

Title Sheet	1
Line 1	2-5
Line 2	6
Line 2A	7
Line 2B	8
Line 3	9-10
Line 4	11
Line 5	12-13
Line 5A	13
Line 6	14
Std. Type 1A Double Inlet Detail	15
RC Manhole Detail	16
Shallow Manhole Detail	17
Special Yard Inlet Detail	18
Standard Drop Inlet Detail	19
Headwall Detail	20
Easement Grading	21-24
Soil Erosion BMPs	25-28
Copy of Plat	29

Benchmark

City of Wichita Benchmark Disc,
Hydraulic and 55th Street South,
42.00' North of Centerline, 40.70'
West of Centerline, 3.70' North of
centerline of Power Pole, 58.20'
Northwest of Southeast Corner, Sec.
21, Twp. 28-S, R-1-E.
Elev. = 76.19 City Datum
Elev. = 1263.59 (NGVD29)

GENERAL NOTES:

- Contractor will be required to provide notice to utility companies a minimum of twenty-four (24) hours prior to any excavation, as follows:

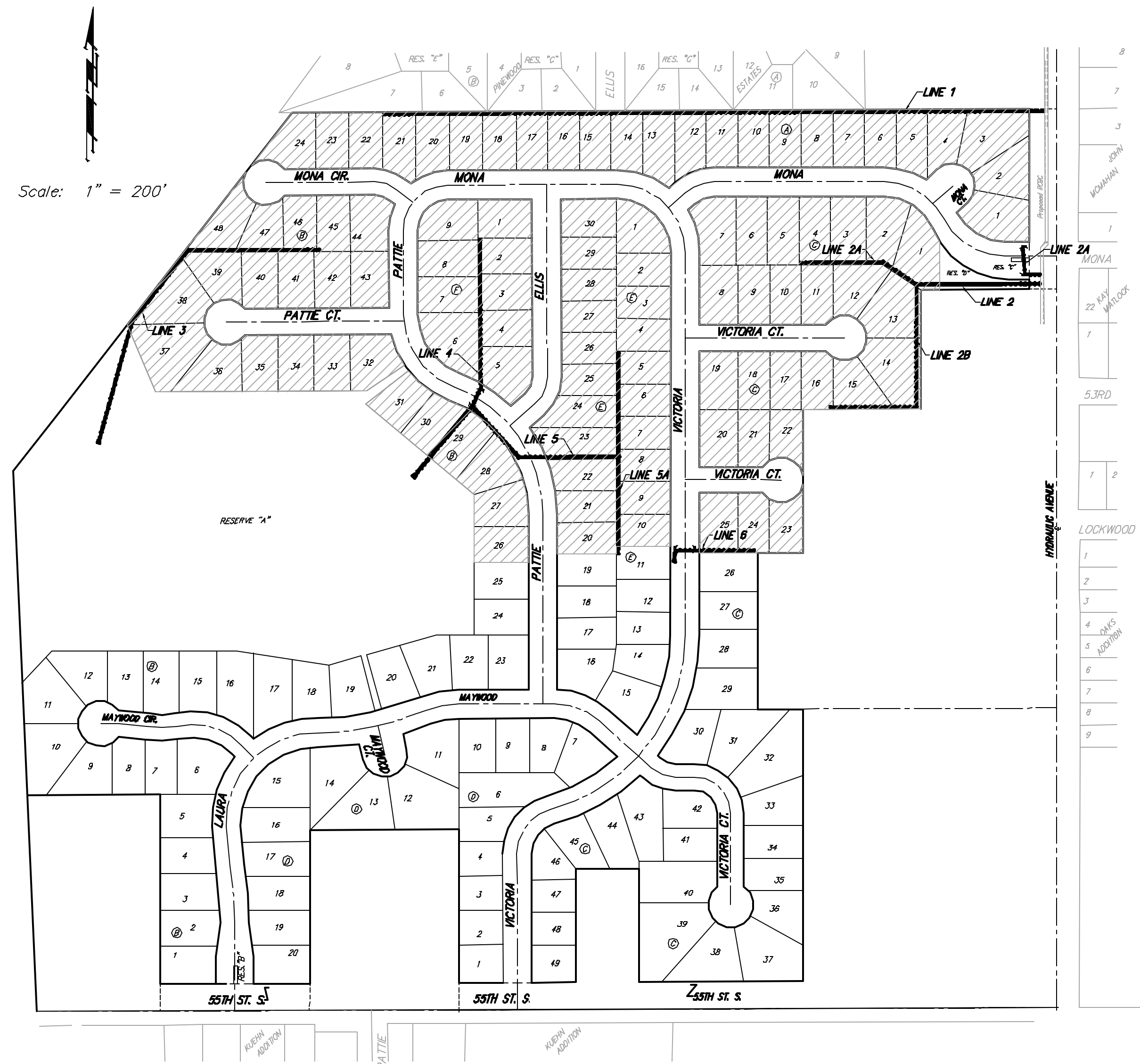
Kansas One-Call 687-2470

The Contractor must notify the following in case of an emergency:

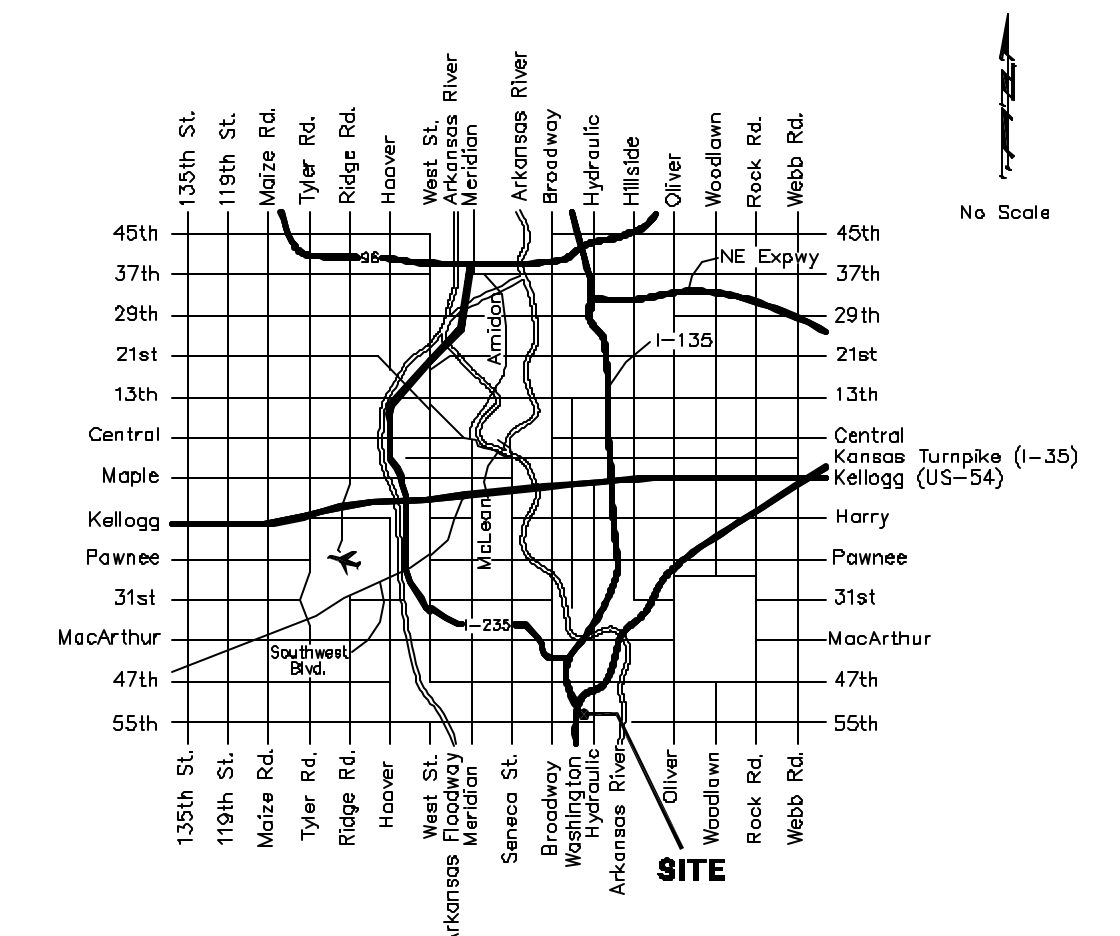
Cox Communications	262-4270
Kansas Gas Service	1-888-482-4950
Westar Energy	383-8650
Aquila Energy	1-888-482-4950
Southwestern Bell	268-2245
City of Wichita Water Dept.	268-4563
City of Wichita Sewer Maint.	268-4024
City of Wichita Storm Sewer Maint.	268-4090
City of Wichita Traffic Maint.	268-4034
Conoco Pipeline Co.	1-800-231-2551
Williams Pipeline Co.	529-6600
Phillips Pipeline Co.	1-800-766-8230

- Underground utility service lines and overhead utility pole lines are to be adjusted as necessary by others prior to construction unless the plans specifically call for their adjustment by the Contractor or unless the plans specifically identify a utility to be adjusted by its owner during construction. Existing utilities and their location, as shown on the plans, represent the best information obtainable for design. The Contractor will be required to work around existing utilities within the right-of-way which do not conflict with proposed construction.
- Trees and shrubs in public right-of-way which are in direct conflict with proposed new construction shall be removed by the Contractor with the Engineer's approval. Trees and shrubs which are not in direct conflict with proposed new construction shall be saved and protected from damage.
- The Contractor shall give all property owners and/or tenants of developed property abutting the construction of this project a minimum of ten (10) days advance notice prior to start of construction.
- The Contractor shall be responsible for preserving property irons. The Contractor will be required to re-establish any property irons which are damaged or destroyed by his construction operations. Such irons shall be re-established by a licensed land surveyor in accordance with state laws.

- All existing and proposed erosion control measures including silt fencing, erosion control mat, straw bales, inlet barriers, and const. entrance shall be maintained throughout construction by the contractor and until project is accepted by the City of Wichita. The on-site engineer shall complete weekly reports on the status of erosion control measures. The contractor shall be required to comply with maintenance and/or replacement of erosion control measures as determined by the on-site engineer until project is accepted by City of Wichita. Maintenance and/or replacement of erosion control measures to be paid by L.S. bid item "Erosion Control BMP's."
- All areas disturbed during construction shall be seeded at 300 lbs./acre with Rye Grass immediately following construction in that area. Contractor shall prepare ground per City Specifications.



Benefit District



Vicinity Map

Dec 2003