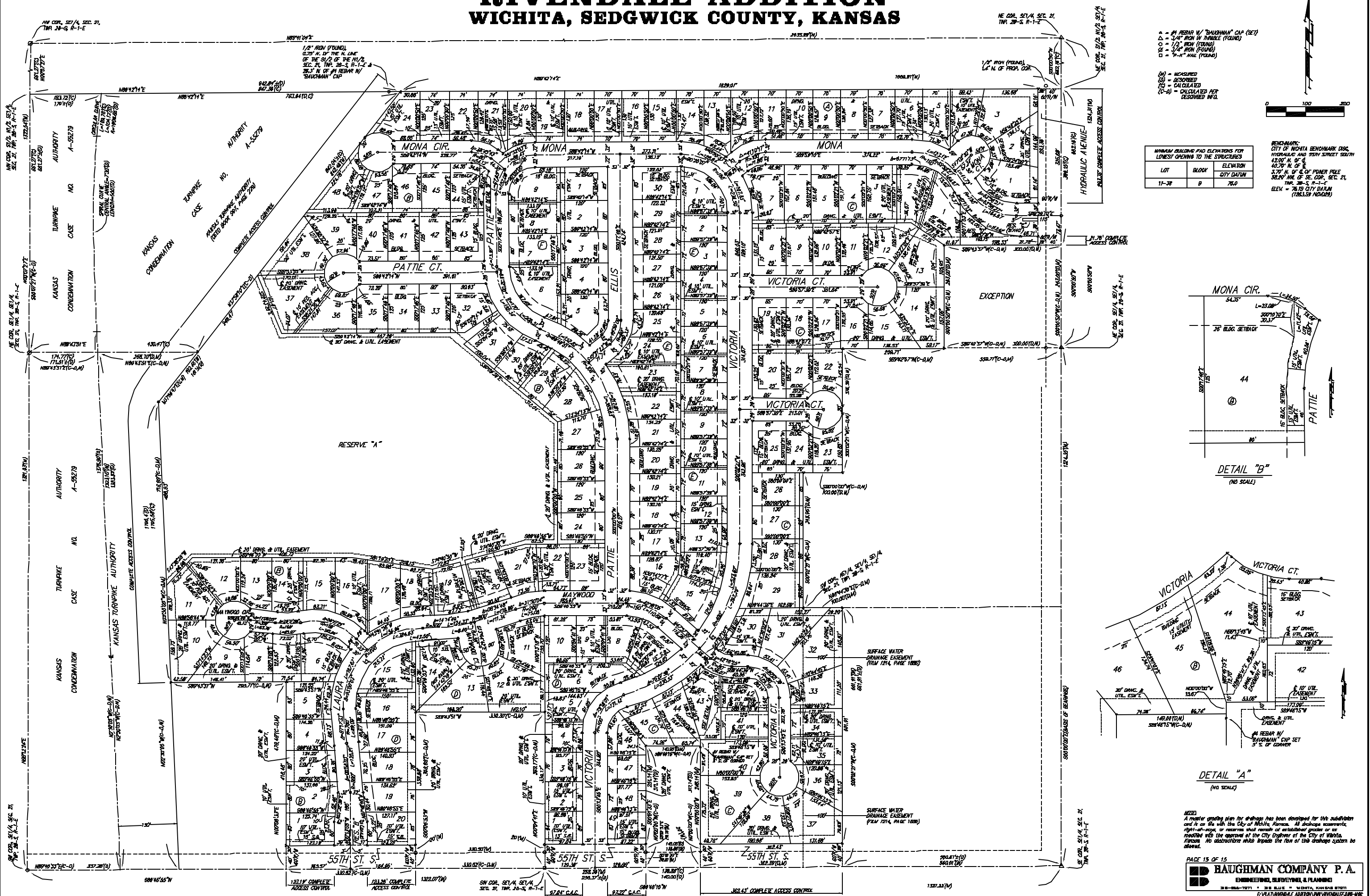


RIVENDALE ADDITION

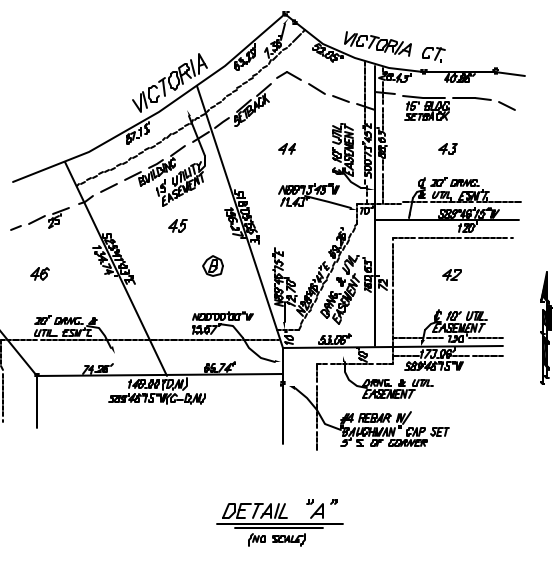
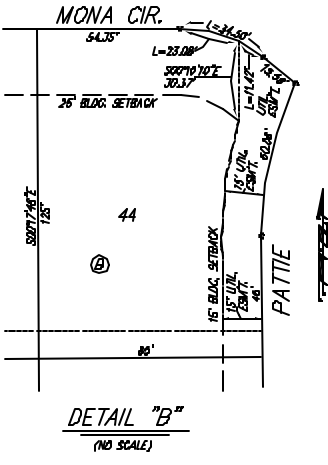
WICHITA, SEDGWICK COUNTY, KANSAS



- ▲ - #4 REBAR W/ "BAUGHMAN" CAP (SET)
 - - 3/4" IRON W/ HANDLE (FOUND)
 - - 1/2" IRON (FOUND)
 - - 1/4" IRON (FOUND)
 - - 4" x 4" WALL (FOUND)
- (M) - MEASURED
 (S) - DESCRIBED
 (C) - CALCULATED
 (C-A) - CALCULATED PER DESCRIBED INFO.

MINIMUM BUILDING PAD ELEVATIONS FOR LOWEST OPENING TO THE STRUCTURES		
LOT	BLOCK	ELEVATION CITY DATUM
11-38	B	76.0

BENCHMARK: CITY OF WICHITA BENCHMARK DISC, HYDRALIC AND 55TH STREET SOUTH, 43.00' N. OF & 40.70' N. OF E, 3.70' N. OF 6" POWER POLE, 38.24' N.E. OF SEC. 21, TRP. 28-S, R-1-E, ELEV. = 76.19 CITY DATUM (7883.59 NGAD83)



NOTED: A master grading plan for drainage has been developed for this subdivision and it is filed with the City of Wichita, Kansas. All drainage easements, right-of-way, or easements shall remain or be established grades or as recorded with the approval of the City Engineer of the City of Wichita, Kansas. No obstructions which impede the flow of the drainage system be allowed.