

2ND ST. NORTH

ELIZABETH

MARTINSON

260 N. Martinson

EXPOSITION

DODGE

DREW

1ST STREET

2-1

MH # 5347-253
Replace Manhole Frame & Cover
Rework Manhole Bench & Invert
Approx depth = 5.8 ft

Remove and replace 822 lf of 8" pipe
from MH 5347-253 to MH 5347-225

Remove and replace 164 lf of 8" pipe
from MH 5347-227 to MH 5347-225

MH # 5347-225
Replace Manhole Frame & Cover
Rework Manhole Bench & Invert
Approx depth = 8.4 ft

MH # 5347-227
Approx depth = 8.3 ft

MH # 5347-250
Reconstruct Standard Manhole
Approx depth = 7.7 ft

Remove and replace 15 lf of Asphalt Approach
Remove and replace 22 lf of Asphalt Pavement

MH # 5347-247
Rework Manhole Bench & Invert
Approx depth = 8.0 ft

Remove and replace 135 lf of Asphalt Pavement
Remove and replace 71 lf of Concrete Pavement

Unpaved Alley

277'

164' Unpaved

Asphalt Pavement
171'

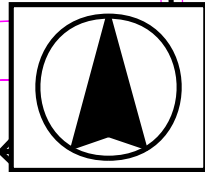
Concrete Pavement
171'

100'

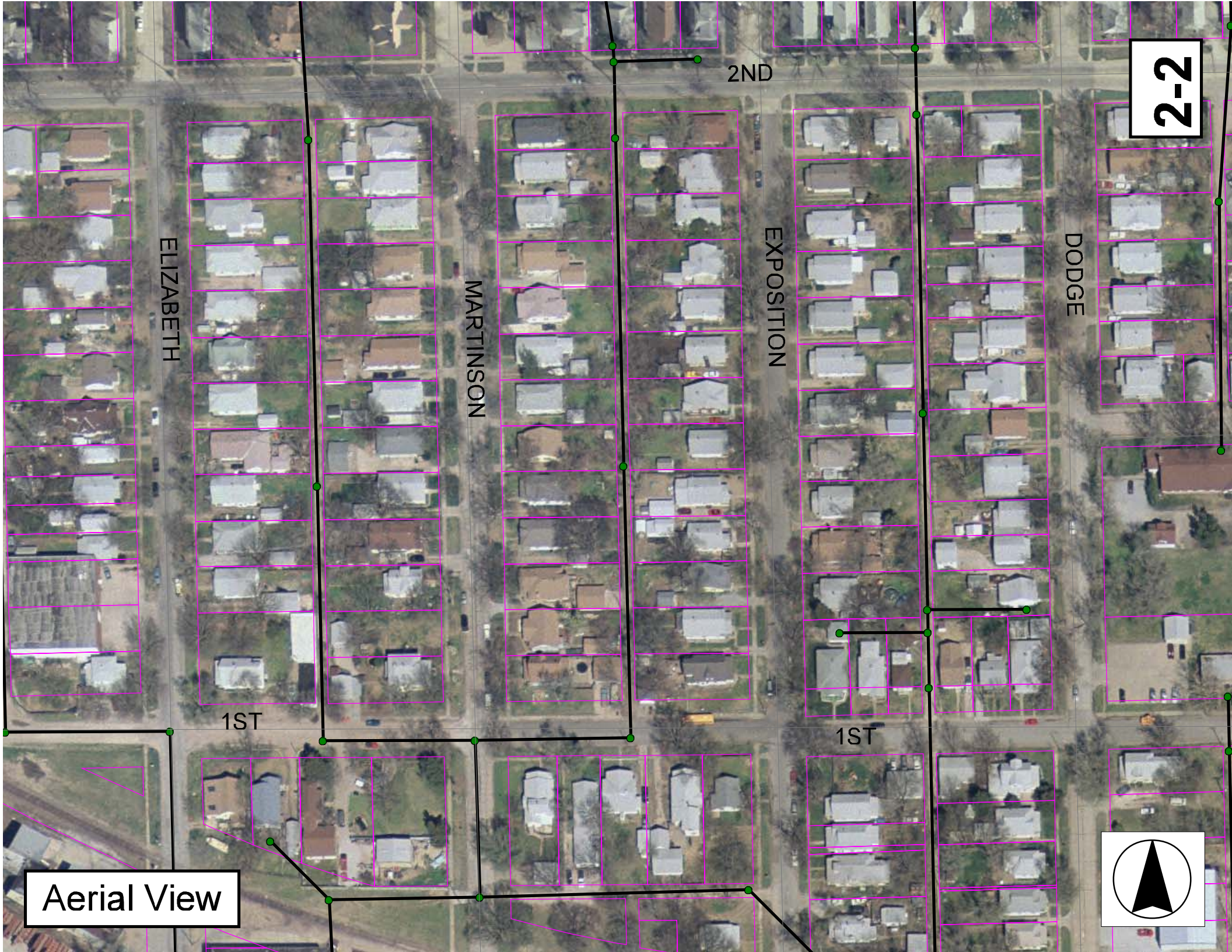
356'

295'

SITE 2



2-2



ELIZABETH

MARTINSON

EXPOSITION

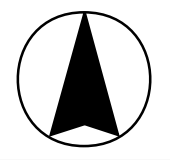
DODGE

2ND

1ST

1ST

Aerial View



Television Inspection Master Report

9/5/2003
10:47:08AM
C07B

US Manhole: 5347-253
DS Manhole: 5347-250

1310 W 2ND ST N
225 N EXPOSITION AVE

Date Insp: 2/5/2003

Basin:

Dir Televised: Upstream To Downstream

Pipe Information

Shape: Round
Dia/Ht Width: 8
Length: 356.0
Pipe Sec Length:

Length Status:
Material: VCP
Slope: 0.199

Project No.: B-035
Index:
Surface: Alley Unpaved

Comment:

Inspection Information

Crew: 696
Weather: Cloudy
Surface Cond: N/A
Dyed Test: No

Percent Full: 15
Purpose: TV Existing Line
Flow: Normal Flow

Tape ID: V-3791
Counter Start: 0.00.00.
Counter Stop: 0.54.58.

Obs. #	VTR Counter Comment	Dist	Location	Description	Rating	Obsrvd (gpm)	Est. (gpm)	Ratings		
								Struct	Clean	Remain (gpm)
1		0.0	US Manhole	5347-253 / 1310 W 2ND ST, IN ALLEY S. OF 2ND ST NORTH.						
2		5.0	West	Wye Service	1		0.000	0	0	0.000
3		5.0	Wye Service	Roots	3		0.008	5	8	0.008
4		8.0	East	Wye Service	1		0.000	0	0	0.000
5		9.0	Crown	Crack-Radial	1		0.001	1	0	0.001
6		26.0	Quad 3 / L-Lt	Roots	2		0.004	2	4	0.004
7		29.0	Quad 4 / U-Lt	Crack-Horizontal	1		0.001	1	0	0.001
8		30.0	West	Wye Service	1		0.000	0	0	0.000
9		32.0	Quad 4 / U-Lt	Crack-Horizontal	1		0.001	1	0	0.001
10		33.0	East	Wye Service	1		0.000	0	0	0.000
11		45.0	Crown	Crack-Horizontal	1		0.001	1	0	0.001
12		56.0	West	Pipe Seal (means wye is sealed off)			0.000	0	0	0.000
13		59.0	East	Pipe Seal	1		0.000	0	0	0.000
14		60.0	Quad 4 / U-Lt	Crack-Horizontal	1		0.001	1	0	0.001
15		62.0	Quad 4 / U-Lt	Crack-Radial	1		0.001	1	0	0.001
16		75.0	Quad 3 / L-Lt	Crack-Radial	1		0.001	1	0	0.001
17		80.0	Quad 4 / U-Lt	Crack-Horizontal	1		0.001	1	0	0.001
18		84.0	West	Wye Service	1		0.000	0	0	0.000
19		85.0	Quad 4 / U-Lt	Crack-Radial	1		0.001	1	0	0.001
20		87.0	East	Wye Service	1		0.000	0	0	0.000
21		90.0	Quad 3 / L-Lt	Crack-Horizontal	1		0.001	1	0	0.001
22		109.0	West	Pipe Seal	1		0.000	0	0	0.000
23		112.0	East	Pipe Seal	1		0.000	0	0	0.000
24		118.0	Quad 4 / U-Lt	Crack-Horizontal	1		0.001	1	0	0.001
25		119.0	Crown	Pipe Seal	1		0.000	0	0	0.000
26		123.0	Crown	Crack-Horizontal	1		0.001	1	0	0.001
27		128.0	Quad 1 / U-Rt	Crack-Radial	1		0.001	1	0	0.001
28		135.0	West	Pipe Seal	1		0.000	0	0	0.000
29		137.0	East	Wye Service	1		0.000	0	0	0.000
30		138.0	Quad 2 / L-Rt	Crack-Horizontal	1		0.001	1	0	0.001
31		148.0	Quad 2 / L-Rt	Roots	2		0.004	2	4	0.004
32		151.0	Quad 3 / L-Lt	Roots	3		0.008	5	8	0.008
33		153.0	West	Break-In Conn	1		0.001	0	0	0.001
34		153.0	Break-In-Connection	Roots	4		0.010	10	25	0.010
	ADDRESS		250 N.MARTINSON ST.							
35		159.0	Quad 3 / L-Lt	Broken Pipe	5		0.060	100	0	0.060
36		160.0	West	Pipe Seal	1		0.000	0	0	0.000
37		162.0	East	Pipe Seal	1		0.000	0	0	0.000

2-3

Television Inspection Master Report

9/5/2003
10:47:08AM

US Manhole: 5347-253 1310 W 2ND ST N Date Insp: 2/5/2003 Basin: C07B
DS Manhole: 5347-250 225 N EXPOSITION AVE

38	163.0	Joint	Broken Pipe	5	0.060	100	0	0.060
39	179.0	Crown	Crack-Horizontal	2	0.002	2	0	0.002
40	180.0	West	Wye Service	1	0.000	0	0	0.000
41	184.0	Crown	Crack-Radial	1	0.001	1	0	0.001
42	186.0	West	Wye Service	1	0.000	0	0	0.000
43	186.0	Joint	Crack-Radial	2	0.002	2	0	0.002
QUAD # 1 CRACKS SMALL PCS MISSING.								
44	188.0	East	Wye Service	1	0.000	0	0	0.000
45	188.0	Wye Service	Roots	2	0.004	2	4	0.004
46	188.0	Quad 1 / U-Rt	Crack-Horizontal	1	0.001	1	0	0.001
47	211.0	West	Pipe Seal	1	0.000	0	0	0.000
48	213.0	East	Pipe Seal	1	0.000	0	0	0.000
49	232.0	Quad 4 / U-Lt	Crack-Horizontal	1	0.001	1	0	0.001
50	236.0	West	Wye Service	1	0.000	0	0	0.000
51	236.0	Wye Service	Crack-Radial	1	0.001	1	0	0.001
52	239.0	East	Wye Service	1	0.000	0	0	0.000
53	249.0	Crown	Observation Hole (sealed off)		0.000	0	0	0.000
54	250.0	Camera Lens Submerge						
WE WILL USE CLEANER TO SEE IF THERES A STOPPAGE OR SAG.								
55	262.0	West	Pipe Seal	1	0.000	0	0	0.000
56	265.0	East	Pipe Seal	1	0.000	0	0	0.000
57	270.0	Quad 2 / L-Rt	Grease	2	0.000	0	0	0.000
58	273.0	Crown	Crack-Horizontal	1	0.001	1	0	0.001
59	277.0	Camera Lens Submerge						
SAG STARTS PLUS GREASE ON BOTH SIDES OF PIPE IN QUADS 3 AND 4.								
60	310.0	West	Pipe Seal	1	0.000	0	0	0.000
61	312.0	East	Wye Service	1	0.000	0	0	0.000
62	312.0	Wye Service	Grease	2	0.000	0	0	0.000
63	338.0	East	Wye Service	1	0.000	0	0	0.000
64	338.0	Wye Service	Grease	2	0.000	0	0	0.000
65	355.0	DS Manhole	5347-250					0.000

2-4

Television Inspection Master Report

9/5/2003
10:47:08AM

US Manhole: 5347-250 225 N EXPOSITION AVE Date Insp: 2/5/2003 Basin: C07B
DS Manhole: 5347-247 1315 W 1ST ST N

Dir Televised: Upstream To Downstream

Pipe Information

Shape: Round Length Status: Project No.: B-035
Dia/Ht Width: 8 Material: VCP Index:
Length: 295.0 Slope: 0.197 Surface: Alley Unpaved
Pipe Sec Length: Comment:

Inspection Information

Crew: 696 Percent Full: 20 Tape ID: V-3791
Weather: Cloudy Purpose: TV Existing Line Counter Start: 0.54.58.
Surface Cond: N/A Flow: Normal Flow Counter Stop: 1.25.42.
Dyed Test: No

Obs. #	VTR Counter Comment	Dist	Location	Description	Rating	Obsrvd (gpm)	Est. (gpm)	Ratings		
								Struct	Clean	Remain (gpm)
1		0.0	US Manhole 5347-250							
2		4.0	West	Pipe Seal	1		0.000	0	0	0.000
3		6.0	East	Pipe Seal	1		0.000	0	0	0.000
4		18.0	Quad 1 / U-Rt	Broken Pipe	2		0.008	44	0	0.008
5		25.0	Quad 2 / L-Rt	Crack-Radial	1		0.001	1	0	0.001
6		30.0	West	Wye Service	1		0.000	0	0	32.000
7		32.0	East	Wye Service	1		0.000	0	0	0.000
8		32.0	Wye Service	Roots	2		0.004	2	4	0.004
9		55.0	West	Pipe Seal	1		0.000	0	0	0.000
10		57.0	East	Pipe Seal	1		0.000	0	0	0.000
11		64.0	Crown	Crack-Horizontal	2		0.002	2	0	0.002
12		81.0	West	Wye Service	1		0.000	0	0	0.000
13		83.0	East	Wye Service	1		0.000	0	0	0.000
14		83.0	Wye Service	Roots	2		0.004	2	4	0.004
15		86.0	Quad 3 / L-Lt	Crack-Horizontal	2		0.002	2	0	0.002
16		89.0	Quad 3 / L-Lt	Broken Pipe	5		0.060	100	0	0.060
17		91.0	Crown	Observation Hole						0.000
18		106.0	West	Pipe Seal	1		0.000	0	0	0.000
19		109.0	East	Pipe Seal	1		0.000	0	0	0.000
20		110.0	Quad 1 / U-Rt	Broken Pipe	5		0.060	100	0	0.060
21		132.0	East	Wye Service	1		0.000	0	0	0.000
22		134.0	West	Wye Service	1		0.000	0	0	0.000
23		135.0	Quad 1 / U-Rt	Crack-Radial	1		0.001	1	0	0.001
24		146.0	Quad 2 / L-Rt	Broken Pipe	5		0.060	100	0	0.060
25		157.0	West	Pipe Seal	1		0.000	0	0	0.000
26		160.0	East	Pipe Seal	1		0.000	0	0	0.000
27		180.0	West	Wye Service	1		0.000	0	0	0.000
28		181.0	Quad 2 / L-Rt	Crack-Radial	2		0.002	2	0	0.002
29		183.0	East	Wye Service	1		0.000	0	0	0.000
30		193.0	Crown	Observation Hole						0.000
31		208.0	East	Wye Service	1		0.000	0	0	0.000
32		211.0	West	Pipe Seal	1		0.000	0	0	0.000
33		212.0	Crown	Broken Pipe	5		0.060	100	0	0.060
34		234.0	West	Wye Service	1		0.000	0	0	0.000
35		236.0	East	Pipe Seal	1		0.000	0	0	0.000
36		267.0	Quad 2 / L-Rt	Crack-Horizontal	2		0.002	2	0	0.002
37		288.0	Crown	Crack-Radial	2		0.002	2	0	0.002
38		291.0	DS Manhole 5347-247							0.000

2-5

Television Inspection Master Report

9/5/2003
10:47:08AM
C07B

US Manhole: 5347-247
DS Manhole: 5347-225

1315 W 1ST ST N
1411 W 1ST ST N

Date Insp: 12/11/1996

Basin:

Dir Televised: Upstream To Downstream

Pipe Information

Shape: Round	Length Status:	Project No.: B-035
Dia/Ht Width: 8	Material: VCP	Index:
Length: 170.5	Slope: 0.300	Surface: Paved Only

Inspection Information

Crew: R CLUCK	Percent Full: 30	Tape ID: V1384
---------------	------------------	----------------

Obs. #	VTR Counter Comment	Dist	Location	Description	Rating	Obsrvd (gpm)	Est. (gpm)	Ratings		Remain (gpm)
								Struct	Clean	
1		0.0	US Manhole	M.H. 5347-247						
2		2.0	Lower Left	Crack-Radial	1		0.001	1	0	
3		4.0	Lower Left	Crack-Horizontal	2		0.002	2	0	
4		11.0	Upper Left	Crack-Radial	1		0.001	1	0	
5		14.0	Lower Left	Crack-Radial	1		0.001	1	0	
6		17.0	Upper Left	Crack-Radial	1		0.001	1	0	
7		18.0	Invert	Out of sag	4		0.000	10	0	
8		21.0	Invert	Sag 10%	4		0.000	10	0	
9		23.0	Invert	Sag 20%	4		0.000	10	0	
10		26.0	Upper Right	Crack-Radial	1		0.001	1	0	
11		32.0	Upper Left	Crack-Radial	1		0.001	1	0	
12		33.0	Invert	Sag 10%	4		0.000	10	0	
13		37.0	Invert	Out of sag	4		0.000	10	0	
14		42.0	Upper Left	Crack-Radial	1		0.001	1	0	
15		43.0	Invert	Sag 10%	4		0.000	10	0	
16		53.0	Upper Right	Crack-Radial	1		0.001	1	0	
17		62.0	Upper Left	Crack-Radial	2		0.002	2	0	
18		69.0	Upper Left	Crack-Radial	1		0.001	1	0	
19		74.0	Upper Right	Crack-Radial	1		0.001	1	0	
20		85.0	Crown	Observation Hole	0		0.000	0	0	
21		89.0	Invert	Out of sag	4		0.000	10	0	
22		90.0	Upper Left	Crack-Radial	2		0.002	2	0	
23		92.0	Upper Right	Crack-Radial	2		0.002	2	0	
24		100.0	Upper Left	Crack-Radial	2		0.002	2	0	
25		102.0	Invert	Sag 10%	4		0.000	10	0	
26		104.0	Invert	Sag 25%	4		0.000	10	0	
27		106.0	Invert	Sag 40%	4		0.000	10	0	
28		108.0	Camera Submerged	USING CLEANER TO PULL WATER DOWN						
29		113.0	Joint	Offset	3		0.010	20	0	
30		116.0	Upper Left	Crack-Radial	1		0.001	1	0	
31		120.0	Upper Left	Crack-Radial	1		0.001	1	0	
32		120.0	Crown	Grease	3		0.000	0	5	
33		123.0	Upper Right	Crack-Radial	1		0.001	1	0	
34		124.0	Camera Blocked	Debris / silt in line	4		0.000	0	25	
35		126.0	Upper Left	Crack-Radial	1		0.001	1	0	
36		133.0	Lower Right	Crack-Radial	1		0.001	1	0	
37		139.0	Upper Left	Crack-Radial	1		0.001	1	0	
38		141.0	Joint	Offset / CAVITY / TOP OF LINE / AT JOINT						
39		147.0	Upper Right	Crack-Radial	1		0.001	1	0	
40		152.0	Upper Right	Crack-Radial	1		0.001	1	0	
41		155.0	Invert	Out of sag	4		0.000	10	0	
42		157.0	Upper Right	Crack-Radial	1		0.001	1	0	
43		160.0	Upper Left	Crack-Radial	1		0.001	1	0	
44		162.0	Upper Right	Crack-Radial	1		0.001	1	0	
45		166.0	Upper Left	Crack-Radial	1		0.001	1	0	
46		172.0	DS Manhole	5347-225						

2-6

Television Inspection Master Report

9/5/2003
10:47:08AM

US Manhole: 5347-227 1411 W 1ST ST **Date Insp:** 12/5/1996 **Basin:** C07B
DS Manhole: 5347-225 1411 W 1ST ST N
Dir Televised: Upstream To Downstream

Pipe Information

Shape: Round Length Status: Project No.: B-037
 Dia/Ht Width: 8 Material: VCP Index:
 Length: 164.8 Slope: 0.206 Surface:
 Pipe Sec Length: Comment:

Inspection Information

Crew: JR Percent Full: 25 Tape ID: V1411
 Weather: Purpose: TV Existing Line Counter Start:
 Surface Cond: Flow: Normal Flow Counter Stop:
 Dyed Test:

Obs. #	VTR Counter Comment	Dist	Location	Description	Rating	Obsrvd (gpm)	Est. (gpm)	Ratings		Remain (gpm)
								Struct	Clean	
1		0.0	US Manhole	5347-227	0		0.000	0	0	
2		5.0	Camera Blocked	Crack-Horizontal	2		0.002	2	0	
3		11.0	Lower Left	Crack-Radial	2		0.002	2	0	
4		19.0	Upper Left	Crack-Radial	2		0.002	2	0	
5		26.0	Upper Left	Crack-Radial	2		0.002	2	0	
6		36.0	Lower Right	Crack-Radial	2		0.002	2	0	
7		60.0	Crown	Broken Pipe	2		0.008	44	0	
8		78.0	Upper Left	Crack-Radial	2		0.002	2	0	
9		86.0	Crown	Observation Hole	0		0.000	0	0	
10		96.0	Upper Left	Crack-Radial	2		0.002	2	0	
11		117.0	Lower Right	Crack-Radial	2		0.002	2	0	
12		123.0	Camera Submerged	N/A	0		0.000	0	0	
13		156.0	Camera Emerged	N/A	0		0.000	0	0	
14		159.0	DS Manhole	5347-225	0		0.000	0	0	

2-7