

3-1

Remove and replace 21 lf of Concrete Pavement

MH # 5746-427
Replace Manhole Frame & Cover
Rework Manhole Bench & Invert
Approx depth = 10.7 ft

229' 8"

ORME

173'

600

157' 8"

FOUNTAIN

BROADVIEW

BELMONT

CRESTWAY

TERRACE

PERSHING

MH # 5746-041
Construct Standard Manhole over existing
sanitary sewer line at approx. mid-block.

Remove and replace 671 lf of 10" pipe
from MH 5746-427 to MH 5746-426

Pipe Reaming or Pipe Bursting will be
allowed. Choosing either option will not
change the contract amount.

671' 10"

Remove and replace 31 lf of Asphalt Pavement
Remove and replace 4 lf of Concrete Approach (S)

MH # 5746-426
Replace Manhole Frame & Cover
Rework Manhole Bench & Invert
Approx depth = 7.5 ft

658

GILBERT

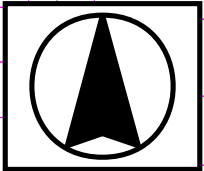
330'

10"

305'

728

SITE 3



ORME

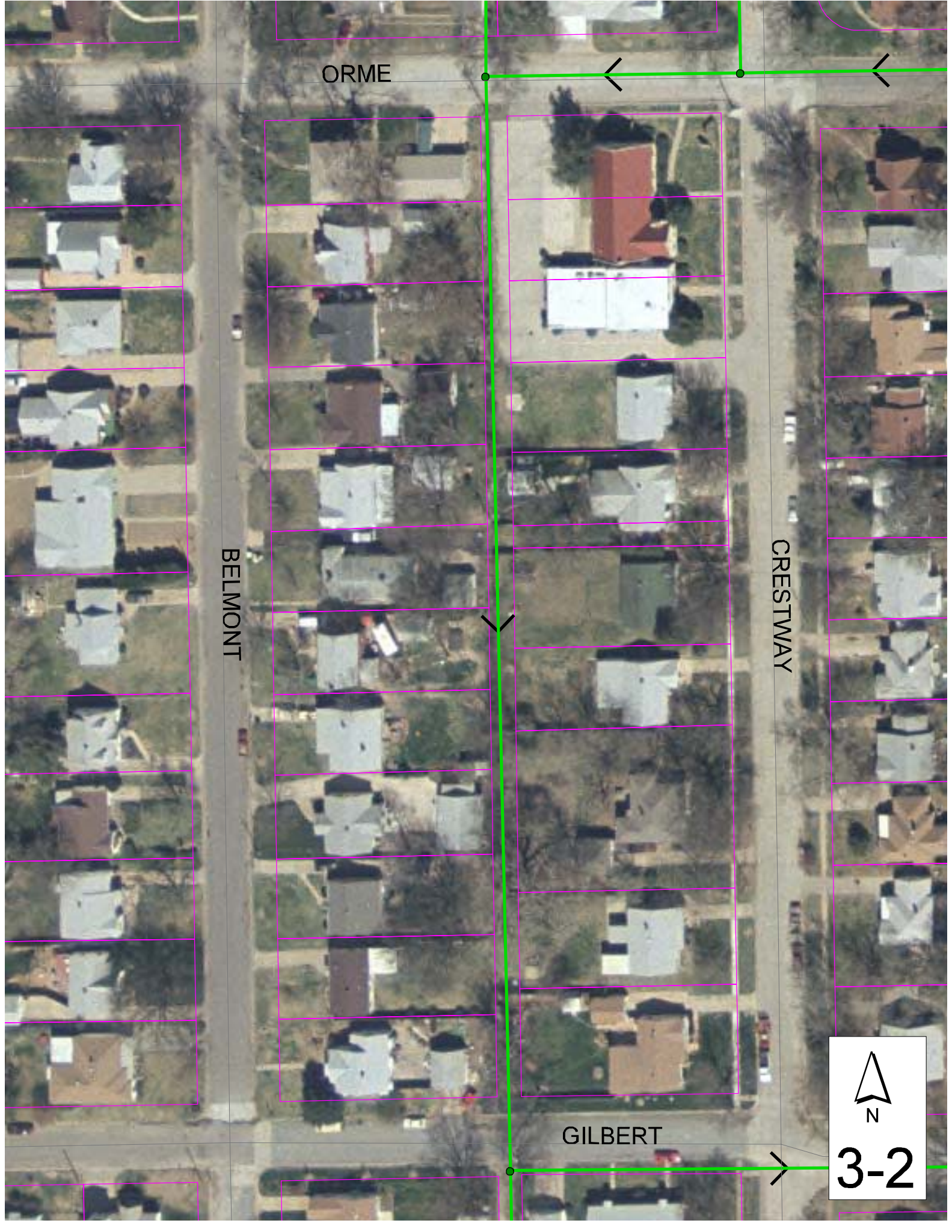
BELMONT

CRESTWAY

GILBERT



3-2



Television Inspection Master Report

9/19/2003
9:32:32AM

US Manhole: 5746-427
DS Manhole: 5746-426

556 BELMONT ST
702 BELMONT ST

Date Insp: 6/27/2002

Basin: E04C

Dir Televised: Upstream To Downstream

Pipe Information

Shape: Round	Length Status:	Project No.: E-015
Dia/Ht Width: 10"	Material: VCP	Index:
Length: 672.0	Slope: 0.199	Surface:

Inspection Information

Crew: 692	Percent Full: 10	Tape ID: 4321
Weather: Sunny	Purpose: TV Existing Line	Counter Start: 28.23
Surface Cond: Trees & Fences	Flow: Normal Flow	Counter Stop:

Obs. #	VTR Counter Comment	Dist	Location	Description	Rating	Obsrvd (gpm)	Est. (gpm)	Ratings Struct	Clean	Remain (gpm)
1		0.0	US Manhole	5746-427						0.000
2		3.0	Quad 2 / L-Rt	Crack-Radial	3		0.004	5	0	0.004
3		53.0	Crown	Crack-Horizontal	3		0.004	5	0	0.004
4		58.0	Invert	Broken Pipe	2		0.008	44	0	0.008
5		77.0	West	Break-In Conn	1		0.001	0	0	0.001
6		90.0	East	Break-In Conn	1		0.001	0	0	0.001
7		91.0	Quad 4 / U-Lt	Crack-Radial	3		0.004	5	0	0.004
8		96.0	Invert	Broken Pipe	3		0.010	60	0	0.010
9		105.0	Invert	Broken Pipe	2		0.008	44	0	0.008
10		109.0	West	Break-In Conn	1		0.001	0	0	0.001
11		110.0	Quad 2 / L-Rt	Crack-Horizontal	3		0.004	5	0	0.004
12		112.0	East	Break-in-Conn						
13		113.0	Quad 4 / U-Lt	Crack-Horizontal	3		0.004	5	0	0.004
14		120.0	Crown	Broken Pipe	3		0.010	60	0	0.010
15		127.0	Crown	Crack-Horizontal	3		0.004	5	0	0.004
16		137.0	Invert	Broken Pipe	2		0.008	44	0	0.008
17		141.0	Crown	Crack-Horizontal	3		0.004	5	0	0.004
18		144.0	Crown	Broken Pipe	2		0.008	44	0	0.008
19		147.0	Crown	Crack-Horizontal	3		0.004	5	0	0.004
20		151.0	West	Break-In Conn / broken pipe around the tap / needs replaced						
21		153.0	Crown	Broken Pipe	3		0.010	60	0	0.010
22		155.0	Crown	Broken Pipe	2		0.008	44	0	0.008
23		159.0	Invert	Broken Pipe	2		0.008	44	0	0.008
24		161.0	Invert	Broken Pipe	3		0.010	60	0	0.010
25		164.0	Invert	Broken Pipe	2		0.008	44	0	0.008
26		167.0	Invert	Broken Pipe	2		0.008	44	0	0.008
27		170.0	Invert	Crack-Horizontal	3		0.004	5	0	0.004
28		173.0	Invert	Broken Pipe	2		0.008	44	0	0.008
29		179.0	Invert	Broken Pipe	2		0.008	44	0	0.008
30		182.0	Invert	Broken Pipe	2		0.008	44	0	0.008
31		185.0	Invert	Broken Pipe	3		0.010	60	0	0.010
32		188.0	Crown	Broken Pipe	3		0.010	60	0	0.010
33		192.0	Crown	Broken Pipe	2		0.008	44	0	0.008
34		194.0	Crown	Broken Pipe	2		0.008	44	0	0.008
35		197.0	Invert	Broken Pipe	3		0.010	60	0	0.010
36		199.0	Crown	Broken Pipe	3		0.010	60	0	0.010
37		202.0	Invert	Broken Pipe	3		0.010	60	0	0.010
38		205.0	Crown	Broken Pipe	2		0.008	44	0	0.008
39		208.0	Invert	Broken Pipe	2		0.008	44	0	0.008
40		211.0	West	Wye Service	3		0.000	2	0	0.000

Broken pipe around the connection

3-3

Television Inspection Master Report

9/19/2003
9:32:32AM

US Manhole:	5746-427	556 BELMONT ST	Date Insp:	6/27/2002	Basin:	E04C		
DS Manhole:	5746-426	702 BELMONT ST						
41	212.0	Invert	Broken Pipe	2	0.008	44	0	0.008
42	214.0	Invert	Broken Pipe	3	0.010	60	0	0.010
43	217.0	Invert	Broken Pipe	2	0.008	44	0	0.008
44	220.0	Invert	Broken Pipe	2	0.008	44	0	0.008
45	225.0	East	Break-In Conn	1	0.001	0	0	0.001
46	226.0	Invert	Broken Pipe	2	0.008	44	0	0.008
47	231.0	East	Break-In Conn	1	0.001	0	0	0.001
			SEAL OFF					
48	232.0	Invert	Broken Pipe	2	0.008	44	0	0.008
49	238.0	Invert	Broken Pipe	2	0.008	44	0	0.008
50	244.0	Invert	Broken Pipe	2	0.008	44	0	0.008
51	257.0	East	Break-In Conn	1	0.001	0	0	0.001
52	265.0	West	Break-In Conn	1	0.001	0	0	0.001
53	268.0	Quad 2 / L-Rt	Crack-Horizontal	3	0.004	5	0	0.004
54	279.0	Invert	Broken Pipe	2	0.008	44	0	0.008
55	282.0	Quad 1 / U-Rt	Crack-Horizontal	3	0.004	5	0	0.004
56	288.0	West	Break-In Conn	3	Broken pipe at the connection			
57	314.0	Crown	Broken Pipe	2	0.008	44	0	0.008
58	319.0	East	Break-In Conn	1	0.001	0	0	0.001
59	320.0	Quad 4 / U-Lt	Crack-Horizontal	3	0.004	5	0	0.004
60	326.0	Camera Lens Submerge						0.000
61	331.0	Camera Lens Emerged						0.000
62	343.0	West	Break-In Conn	1	0.001	0	0	0.001
63	377.0	Crown	Crack-Horizontal	3	0.004	5	0	0.004
64	380.0	East	Break-In Conn	1	0.001	0	0	0.001
65	385.0	Crown	Crack-Horizontal	3	0.004	5	0	0.004
66	410.0	West	Break-In Conn	1	0.001	0	0	0.001
67	446.0	East	Break-In Conn	1	0.001	0	0	0.001
68	452.0	West	Break-In Conn	1	0.001	0	0	0.001
69	455.0	Crown	Grease	3	0.000	0	5	0.000
70	467.0	Joint	Roots	3	0.008	5	8	0.008
71	511.0	West	Break-In Conn / Roots	2	0.002	0	0	0.002
72	527.0	East	Break-In Conn	5	0.010	400	0	0.010
		ROOTS / large root ball coming out of this tap						
73	550.0	West	Wye Service / Roots	2	0.000	0	0	0.000
74	565.0	Invert	Broken Pipe	2	0.008	44	0	0.008
75	568.0	Crown	Crack-Horizontal	3	0.004	5	0	0.004
76	603.0	Crown	Broken Pipe	3	0.010	60	0	0.010
77	608.0	Crown	Broken Pipe	3	0.010	60	0	0.010
78	610.0	East	Break-In Conn	1	0.001	0	0	0.001
79	613.0	Crown	Crack-Horizontal	3	0.004	5	0	0.004
80	618.0	Crown	Crack-Horizontal	3	0.004	5	0	0.004
81	620.0	Quad 4 / U-Lt	Crack-Horizontal	3	0.004	5	0	0.004
82	621.0	West	Break-In Conn	2	0.002	0	0	0.002
		BROKEN PIPE / poor condition						
83	656.0	DS Manhole	5746-426					0.000

NOTE: This line needs a manhole constructed at approx. mid-block. Contractor and Public Works Inspector will decide best location in the field.

Most of the connections are in poor condition at the main.

3-4