

7-1

MH # 5749-024
Replace Manhole Frame & Cover
(site restoration incidental)
Approx depth = 8.6 ft

Replace Service Connection
29 If south of MH 5749-022
1720 N. Vassar

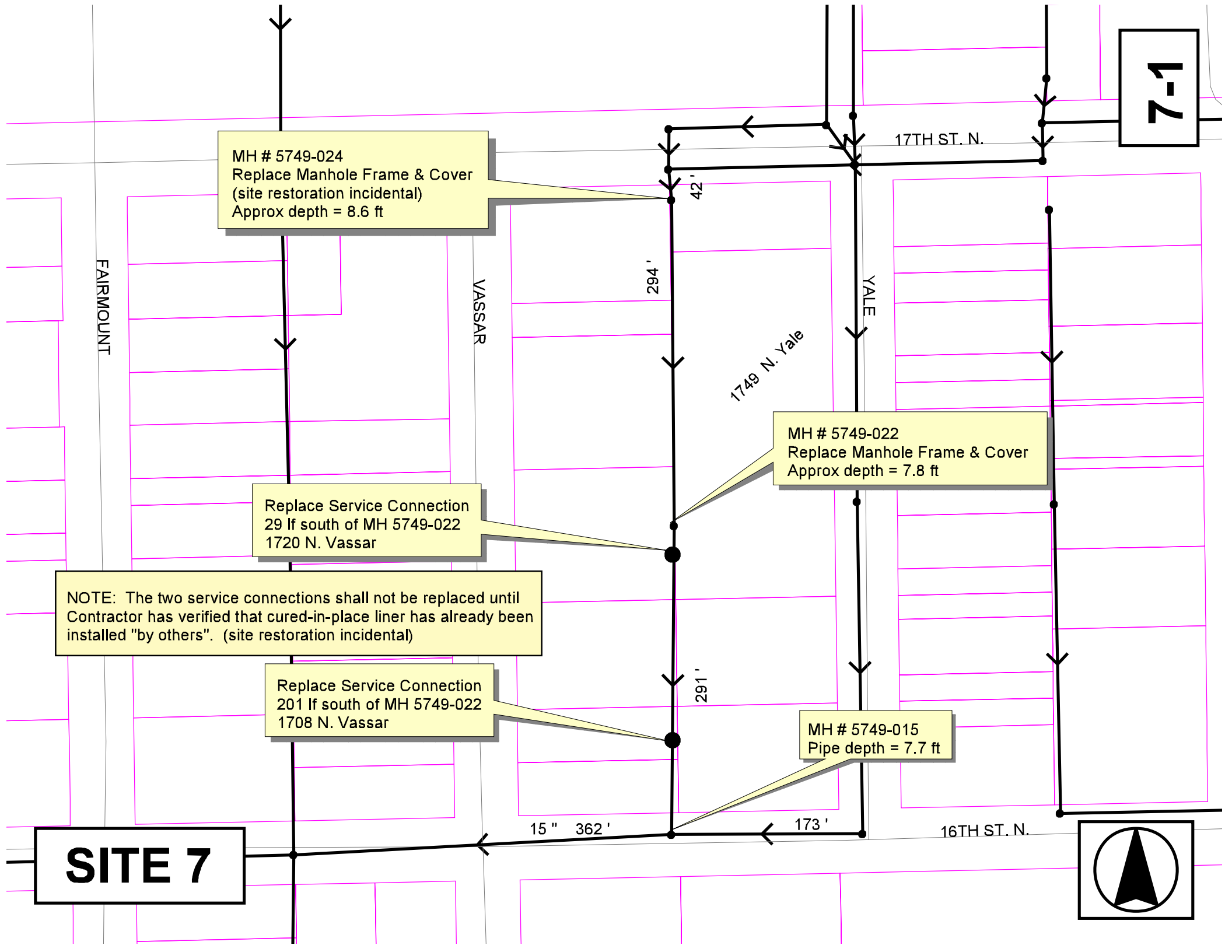
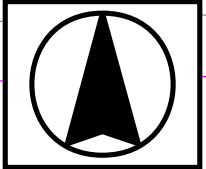
NOTE: The two service connections shall not be replaced until Contractor has verified that cured-in-place liner has already been installed "by others". (site restoration incidental)

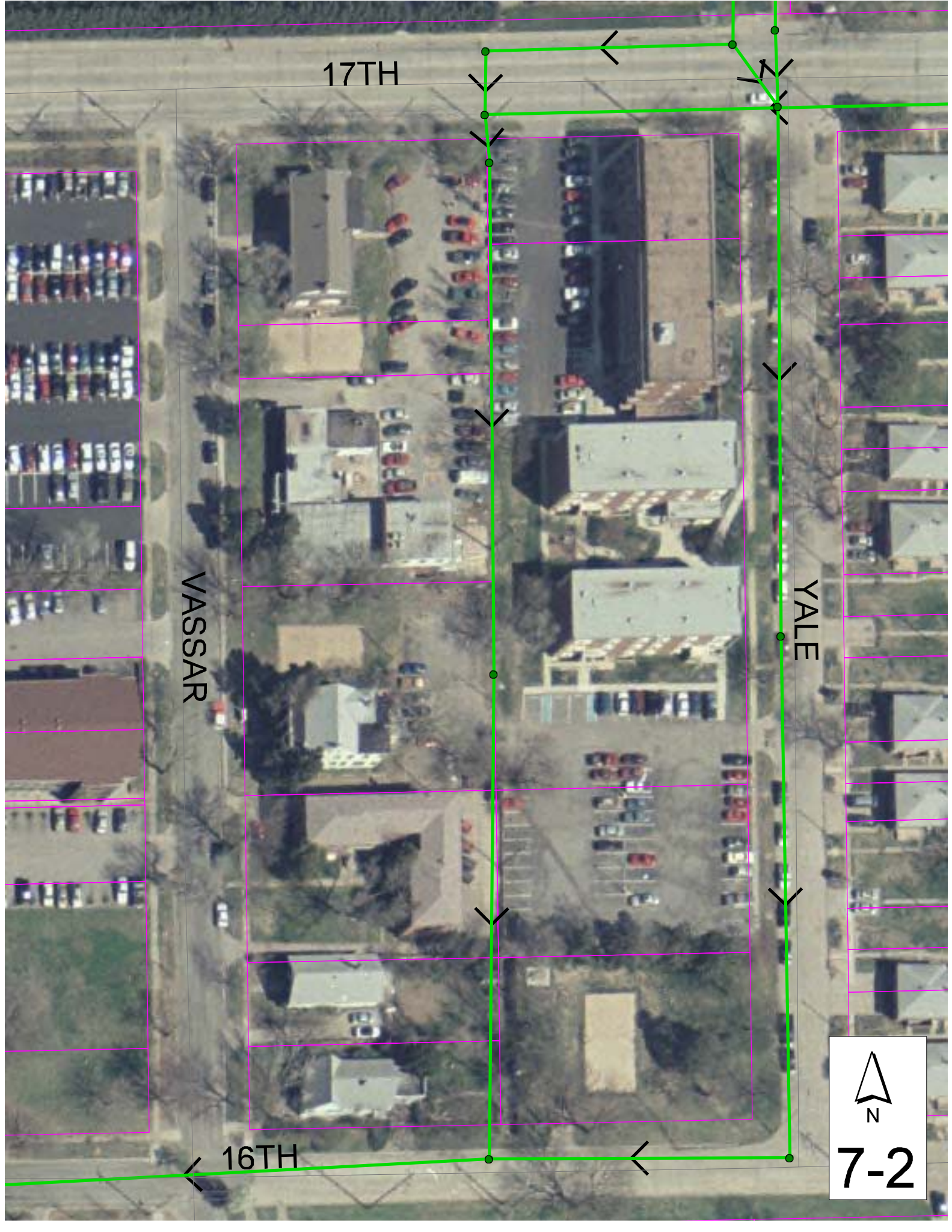
Replace Service Connection
201 If south of MH 5749-022
1708 N. Vassar

MH # 5749-022
Replace Manhole Frame & Cover
Approx depth = 7.8 ft

MH # 5749-015
Pipe depth = 7.7 ft

SITE 7





17TH

VASSAR

YALE

16TH


7-2

Television Inspection Master Report

9/29/2003
12:46:19PM
EC02D

US Manhole: 5749-022
DS Manhole: 5749-015

1845 N FAIRMOUNT ST
1700 N VASSAR ST

Date Insp: 8/13/2003

Basin:

Dir Televised: Upstream To Downstream

Pipe Information

Shape:	Round	Length Status:	Project No.:	C-226
Dia/Ht Width:	8 0	Material:	VCP	Index:
Length:	302.2	Slope:	0.699	Surface:
Pipe Sec Length:	Comment:			

Inspection Information

Crew:	692 DEW	Percent Full:	10	Tape ID:	4019
Weather:	Sunny	Purpose:	TV Existing Line	Counter Start:	0.44.26
Surface Cond:	Trees	Flow:	Normal Flow	Counter Stop:	1.30.47
Dyed Test:	N/A				

Obs. #	VTR Counter Comment	Dist	Location	Description	Rating	Obsrvd (gpm)	Est. (gpm)	Ratings Struct	Clean	Remain (gpm)
1		0.0	US Manhole 5749-022		1					0.000
2		1.0	Crown	Broken Pipe	4		0.030	78	0	0.030
3		1.0	Joint	Roots	2		0.004	2	4	0.004
4		4.0	West	Wye Service / Sealed off	1		0.000	0	0	0.000
5		7.0	East	Wye Service / Sealed off	1		0.000	0	0	0.000
6		7.0	Crown	Broken Pipe	2		0.008	44	0	0.008
7		8.0	Crown	Broken Pipe	2		0.008	44	0	0.008
8		8.0	Invert	Broken Pipe	3		0.010	60	0	0.010
9		9.0	Crown	Broken Pipe	3		0.010	60	0	0.010
10		10.0	Crown	Broken Pipe	3		0.010	60	0	0.010
11		10.0	Invert	Broken Pipe	2		0.008	44	0	0.008
12		13.0	Crown	Broken Pipe	3		0.010	60	0	0.010
13		13.0	Invert	Broken Pipe	3		0.010	60	0	0.010
14		14.0	Quad 4 / U-Lt	Grease	2		0.000	0	0	0.000
15		15.0	Crown	Broken Pipe	2		0.008	44	0	0.008
16		15.0	Invert	Broken Pipe	4		0.030	78	0	0.030
17		17.0	Crown	Broken Pipe	3		0.010	60	0	0.010
18		20.0	Crown	Broken Pipe	3		0.010	60	0	0.010
19		23.0	Crown	Broken Pipe	2		0.008	44	0	0.008
20		23.0	Invert	Broken Pipe	3		0.010	60	0	0.010
21		25.0	Crown	Broken Pipe	3		0.010	60	0	0.010
22		25.0	Invert	Broken Pipe	3		0.010	60	0	0.010
23		27.0	Crown	Broken Pipe	4		0.030	78	0	0.030
24		29.0	West	Wye Service	5		0.000	400	0	0.000
1720 N VASSAR BROKEN TAP / must be replaced after cured-in-place liner is installed										
25		31.0	East	Wye Service / Sealed off	1		0.000	0	0	0.000
26		31.0	Crown	Broken Pipe	4		0.030	78	0	0.030
27		33.0	Invert	Broken Pipe	4		0.030	78	0	0.030
28		37.0	Invert	Broken Pipe	2		0.008	44	0	0.008
29		45.0	Quad 2 / L-Rt	Crack-Horizontal	2		0.002	2	0	0.002
30		47.0	Quad 2 / L-Rt	Crack-Horizontal	1		0.001	1	0	0.001
31		53.0	West	Wye Service / Sealed off	1		0.000	0	0	0.000
32		56.0	East	Wye Service / Sealed off	1		0.000	0	0	0.000
33		62.0	Crown	Broken Pipe	3		0.010	60	0	0.010
34		67.0	Quad 1 / U-Rt	Crack-Horizontal	1		0.001	1	0	0.001
35		69.0	Quad 1 / U-Rt	Crack-Horizontal	1		0.001	1	0	0.001
36		74.0	Quad 4 / U-Lt	Broken Pipe	2		0.008	44	0	0.008

7-3

Television Inspection Master Report

9/29/2003
12:46:19PM

US Manhole: 5749-022 1845 N FAIRMOUNT ST **Date Insp:** 8/13/2003 **Basin:** EC02D
DS Manhole: 5749-015 1700 N VASSAR ST

37	77.0	Invert	Broken Pipe	2	0.008	44	0	0.008
38	78.0	West	Wye Service / Sealed off	1	0.000	0	0	0.000
39	79.0	Invert	Broken Pipe	2	0.008	44	0	0.008
40	80.0	East	Wye Service	1	0.000	0	0	0.000
41	82.0	Crown	Broken Pipe	3	0.010	60	0	0.010
42	84.0	Quad 1 / U-Rt	Broken Pipe	3	0.010	60	0	0.010
43	86.0	Quad 1 / U-Rt	Crack-Horizontal	3	0.004	5	0	0.004
44	89.0	Quad 1 / U-Rt	Broken Pipe	3	0.010	60	0	0.010
45	92.0	Crown	Crack-Horizontal	2	0.002	2	0	0.002
46	94.0	Crown	Crack-Horizontal	2	0.002	2	0	0.002
47	96.0	Quad 4 / U-Lt	Broken Pipe	3	0.010	60	0	0.010
48	99.0	Crown	Broken Pipe	3	0.010	60	0	0.010
49	103.0	West	Wye Service	3	0.000	2	0	0.000
1716 N VASSAR								
50	105.0	East	Wye Service / Sealed off	2	0.000	0	0	0.000
51	106.0	Quad 1 / U-Rt	Broken Pipe	3	0.010	60	0	0.010
52	108.0	Crown	Broken Pipe	4	0.030	78	0	0.030
53	111.0	Crown	Broken Pipe	4	0.030	78	0	0.030
54	113.0	Quad 1 / U-Rt	Broken Pipe	3	0.010	60	0	0.010
55	116.0	Quad 1 / U-Rt	Crack-Horizontal	2	0.002	2	0	0.002
56	118.0	Crown	Crack-Horizontal	2	0.002	2	0	0.002
57	127.0	West	Wye Service / Sealed off	1	0.000	0	0	0.000
58	129.0	East	Wye Service / Sealed off	1	0.000	0	0	0.000
59	131.0	Invert	Broken Pipe	3	0.010	60	0	0.010
60	133.0	Crown	Broken Pipe	3	0.010	60	0	0.010
61	134.0	Crown	Other	4	0.000	0	0	0.000
Observation Hole / PIPE BROKEN AROUND O.H								
62	136.0	Crown	Broken Pipe	3	0.010	60	0	0.010
63	136.0	Invert	Broken Pipe	2	0.008	44	0	0.008
64	138.0	Crown	Broken Pipe	3	0.010	60	0	0.010
65	138.0	Invert	Broken Pipe	3	0.010	60	0	0.010
66	141.0	Quad 4 / U-Lt	Broken Pipe	3	0.010	60	0	0.010
67	143.0	Crown	Broken Pipe	3	0.010	60	0	0.010
68	145.0	Crown	Broken Pipe	3	0.010	60	0	0.010
69	148.0	Crown	Broken Pipe	3	0.010	60	0	0.010
70	150.0	Quad 4 / U-Lt	Broken Pipe	3	0.010	60	0	0.010
71	152.0	West	Wye Service / Sealed off	2	0.000	0	0	0.000
72	154.0	East	Wye Service / Sealed off	3	0.000	2	0	0.000
73	155.0	Quad 4 / U-Lt	Crack-Horizontal	3	0.004	5	0	0.004
74	176.0	West	Wye Service / Sealed off	1	0.000	0	0	0.000
75	179.0	East	Wye Service / Sealed off	1	0.000	0	0	0.000
76	192.0	Invert	Broken Pipe	2	0.008	44	0	0.008
77	195.0	Quad 4 / U-Lt	Broken Pipe	2	0.008	44	0	0.008
78	197.0	Crown	Broken Pipe	3	0.010	60	0	0.010
79	200.0	Crown	Broken Pipe	3	0.010	60	0	0.010
80	201.0	West	Wye Service	5	0.000	400	0	0.000
1708 N VASSAR BROKEN TAP / must be replaced after cured-in-place liner is installed								
81	203.0	East	Wye Service / Sealed off	2	0.000	0	0	0.000
82	203.0	Quad 3 / L-Lt	Broken Pipe	3	0.010	60	0	0.010
83	214.0	Crown	Broken Pipe	2	0.008	44	0	0.008

7-4

Television Inspection Master Report

9/29/2003
12:46:19PM

US Manhole: 5749-022 1845 N FAIRMOUNT ST Date Insp: 8/13/2003 Basin: EC02D
DS Manhole: 5749-015 1700 N VASSAR ST

84	217.0	Crown	Broken Pipe	3	0.010	60	0	0.010
85	219.0	Crown	Broken Pipe	2	0.008	44	0	0.008
86	222.0	Crown	Broken Pipe	2	0.008	44	0	0.008
87	224.0	Joint	Roots	2	0.004	2	4	0.004
88	224.0	Crown	Broken Pipe	2	0.008	44	0	0.008
89	226.0	West	Wye Service	3	0.000	2	0	0.000
1700 N VASSAR CRACK AROUND TAP & ROOTS								
90	227.0	Invert	Broken Pipe	3	0.010	60	0	0.010
91	228.0	East	Wye Service / Sealed off	1	0.000	0	0	0.000
92	228.0	Crown	Broken Pipe	3	0.010	60	0	0.010
93	232.0	Quad 1 / U-Rt	Crack-Horizontal	2	0.002	2	0	0.002
94	236.0	Quad 1 / U-Rt	Broken Pipe	2	0.008	44	0	0.008
95	236.0	Quad 1 / U-Rt	Broken Pipe	3	0.010	60	0	0.010
96	239.0	Quad 1 / U-Rt	Broken Pipe	3	0.010	60	0	0.010
97	241.0	Quad 1 / U-Rt	Broken Pipe	3	0.010	60	0	0.010
98	244.0	Crown	Broken Pipe	3	0.010	60	0	0.010
99	246.0	Crown	Broken Pipe	3	0.010	60	0	0.010
100	250.0	West	Wye Service / sealed off	4	0.000	60	0	0.000
101	252.0	East	Wye Service / sealed off	2	0.000	0	0	0.000
102	261.0	Joint	Roots	1	0.002	1	1	0.002
103	271.0	Crown	Broken Pipe	2	0.008	44	0	0.008
104	273.0	Crown	Broken Pipe	2	0.008	44	0	0.008
105	275.0	West	Wye Service / sealed off	3	0.000	2	0	0.000
106	276.0	Quad 4 / U-Lt	Broken Pipe	2	0.008	44	0	0.008
107	277.0	East	Wye Service / sealed off	1	0.000	0	0	0.000
108	279.0	Quad 4 / U-Lt	Crack-Radial	3	0.004	5	0	0.004
109	284.0	DS Manhole 5749-015		1				0.000

7-5



I'm looking south at MH 5749-024. The manhole needs a new Frame & Cover.
All site restoration, including asphalt removal and replacement, shall be incidental to the manhole work.



The west service connection at 29 1/2 south of MH 5749-022 measures out to be the north edge of an asphalt drive. Any asphalt removal and replacement shall be incidental to the replacement of the service connection.

I'm looking north, toward Greg standing at the point of the service connection.



The service connection at 201 lf south of MH 5749-022 is in an open area, on the other side of this fence.