

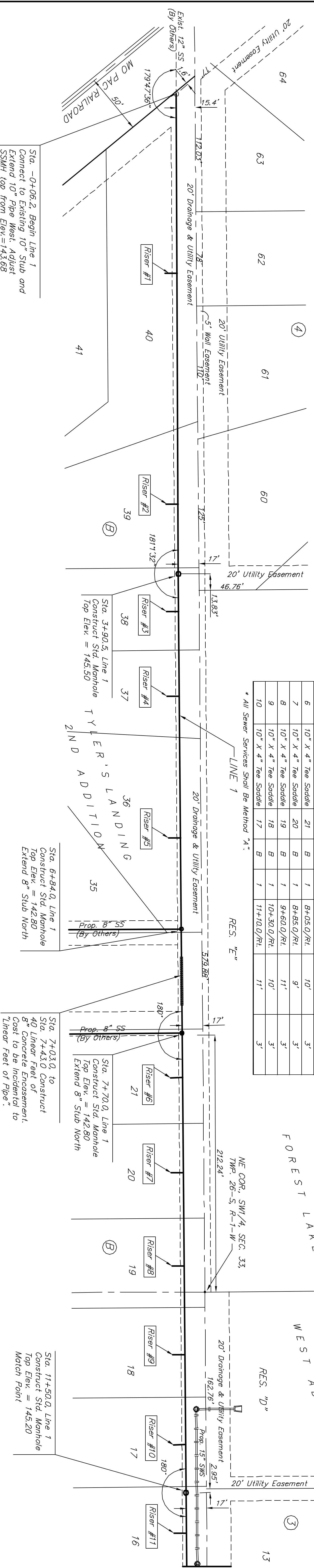
Benchmarks:
 BM #1: 800 Spike in West face of North
 Maple Road E/W R/W 1/2
 mile South of 37th Street North
 Elev. = 176.05 City Datum (1363.45 NGVD)
 BM #2: "Out Top of Curve on West side
 of Pepper Ridge 15'± South of Northeast
 Corner Lot 23, Block 5, Forest Lakes West
 Addition.
 Elev. = 157.12 City Datum (1344.52 NGVD)

Sta. -0+06.2, Begin Line 1
 Connect to Existing 10" Stub and
 Extend 10" Pipe West. Adjust
 SSMH top from Elev.=143.68
 to Elev.=142.40
 Cost to be incidental to "Site
 Clearing and Restoration" Bid Item.

Sta. 6+84.0, Line 1
 Construct Std. Manhole
 Top Elev. = 142.80
 Extend 8" Stub North

Sta. 7+70.0, Line 1
 Construct Std. Manhole
 Top Elev. = 142.80
 Extend 8" Stub North

Sta. 11+50.0, Line 1
 Construct Std. Manhole
 Top Elev. = 145.20
 Match Point

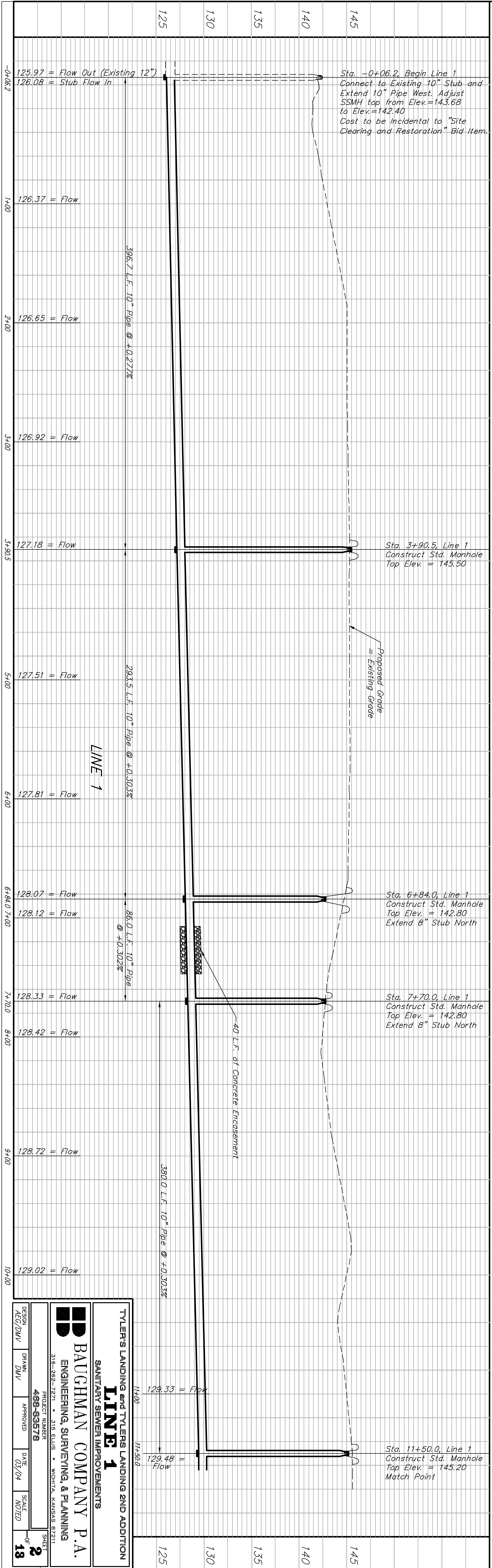


SEWER SERVICE TABLE

NUMBER	TYPE	LOCATION			STATION \ DIRECTION	FOR INFORMATION ONLY	
		LOT NO.	BLOCK NO.	LINE NO.		APPROXIMATE LENGTH	4" PIPE
					VERTICAL	HORIZONTAL	
1	10" X 4" Tee Saddle	40	B	1	1+40.0/Rt.	13'	4'
2	10" X 4" Tee Saddle	39	B	1	3+30.0/Rt.	13'	4'
3	10" X 4" Tee Saddle	38	B	1	4+20.0/Rt.	13'	3'
4	10" X 4" Tee Saddle	37	B	1	4+90.0/Rt.	13'	3'
5	10" X 4" Tee Saddle	36	B	1	6+10.0/Rt.	12'	3'
6	10" X 4" Tee Saddle	21	B	1	8+05.0/Rt.	10'	3'
7	10" X 4" Tee Saddle	20	B	1	8+85.0/Rt.	9'	3'
8	10" X 4" Tee Saddle	19	B	1	9+60.0/Rt.	11'	3'
9	10" X 4" Tee Saddle	18	B	1	10+30.0/Rt.	10'	3'
10	10" X 4" Tee Saddle	17	B	1	11+10.0/Rt.	11'	3'

* All Sewer Services Shall Be Method "A".

Scale: 1" = 40' Horizontal
 1" = 5' Vertical
 1" = 1/8"



TYLERS LANDING and TYLERS LANDING 2ND ADDITION
SANITARY SEWER IMPROVEMENTS

LINE 1

BAUGHMAN COMPANY P.A.
ENGINEERING, SURVEYING & PLANNING

316-288-2221 • 316 ELLIS • WICHITA, KANSAS 67211
 PROJECT NUMBER: **488-93579**
 SHEET: **2** OF **13**

DESIGN: [] DRAWN: [] APPROVED: [] DATE: 03/04
 SCALE: NOTED