

Benchmark:  
 BM #: 804 Spike in West face of North  
 High Line Pole in East R/W Tyler Road 1/2  
 mile South of 37th Street North.  
 Elev. = 176.05 City Datum (1363.43 NGVD)

BM #: "C" Cut Top of Curb on West side  
 of Pepper Ridge 15 $\frac{1}{2}$  South of Northeast  
 Addition Lot 23, Block 5, Forest Lakes West  
 Elev. = 157.12 City Datum (1344.42 NGVD)

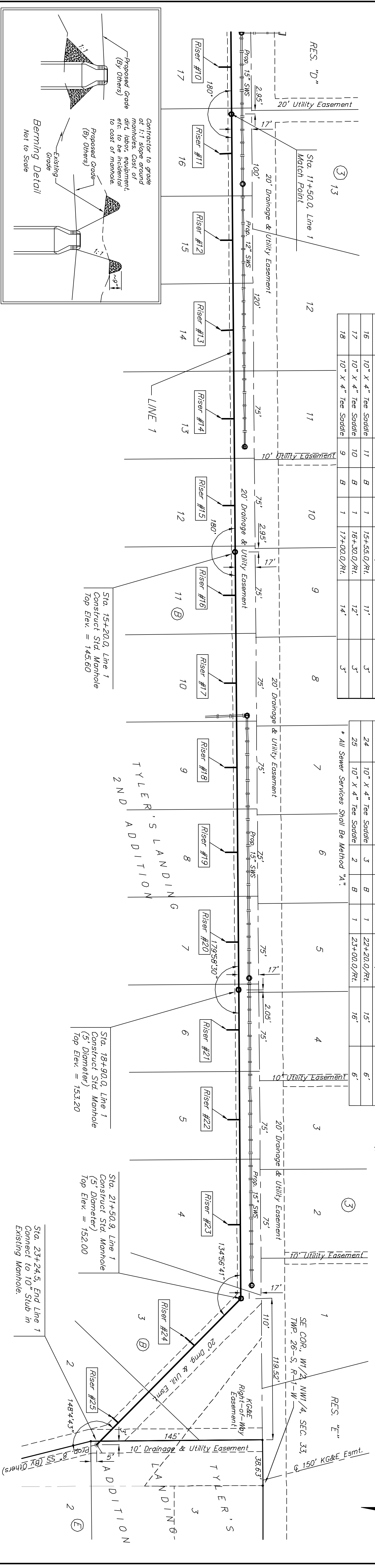
SEWER SERVICE TABLE

NUMBER	TYPE	LOCATION LOT BLOCK LINE NO.	STATION DIRECTION	FOR INFORMATION ONLY APPROXIMATE LENGTH 4" PIPE VERTICAL HORIZONTAL
11	10" X 4" Tee Saddle	B 16	11+85.0/RL	11'
12	10" X 4" Tee Saddle	B 15	12+55.0/RL	11'
13	10" X 4" Tee Saddle	B 14	13+30.0/RL	11'
14	10" X 4" Tee Saddle	B 13	14+10.0/RL	11'
15	10" X 4" Tee Saddle	B 12	14+80.0/RL	11'
16	10" X 4" Tee Saddle	B 11	15+55.0/RL	11'
17	10" X 4" Tee Saddle	B 10	16+30.0/RL	12'
18	10" X 4" Tee Saddle	B 9	17+00.0/RL	14'

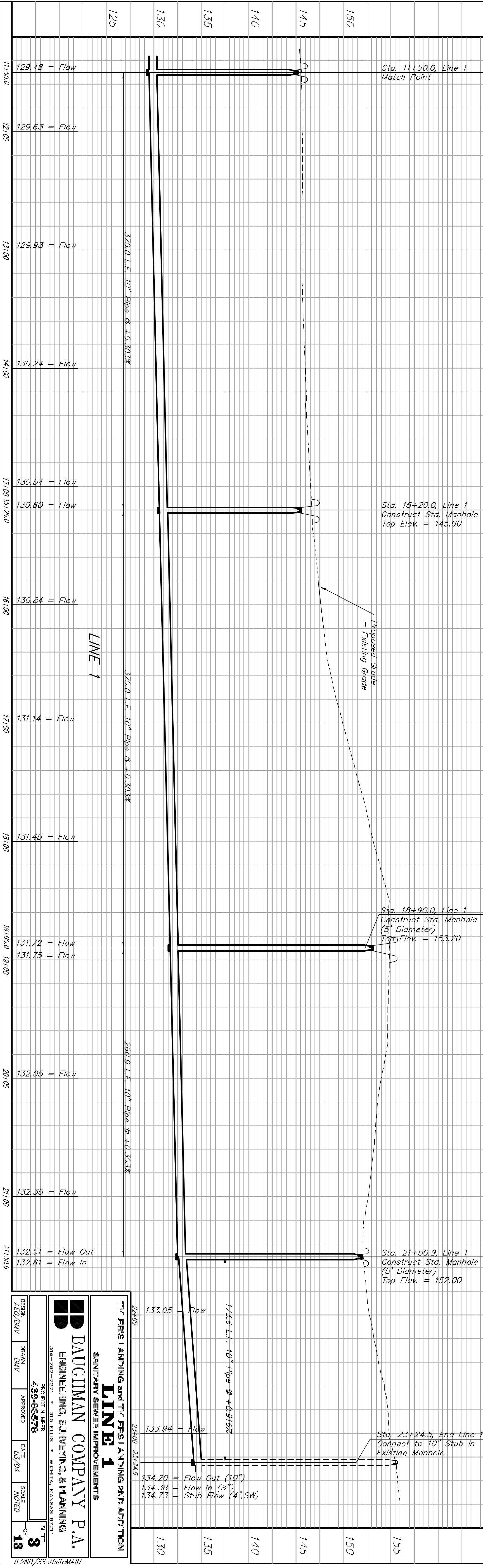
SEWER SERVICE TABLE

NUMBER	TYPE	LOCATION LOT BLOCK LINE NO.	STATION DIRECTION	FOR INFORMATION ONLY APPROXIMATE LENGTH 4" PIPE VERTICAL HORIZONTAL
19	10" X 4" Tee Saddle	B 8	17+35.0/RL	16'
20	10" X 4" Tee Saddle	B 7	18+50.0/RL	18'
21	10" X 4" Tee Saddle	B 6	19+50.0/RL	18'
22	10" X 4" Tee Saddle	B 5	20+00.0/RL	17'
23	10" X 4" Tee Saddle	B 4	20+90.0/RL	15'
24	10" X 4" Tee Saddle	B 3	22+20.0/RL	15'
25	10" X 4" Tee Saddle	B 2	23+00.0/RL	6'

\* All Sewer Services Shall Be Method "A"



Scale: 1" = 40' Horizontal  
 1" = 5' Vertical  
 = Iron



**TYLER'S LANDING and TYLER'S LANDING 2ND ADDITION  
 SANITARY SEWER IMPROVEMENTS  
 LINE 1**

**BAUGHMAN COMPANY P.A.**  
 ENGINEERING, SURVEYING, & PLANNING

PROJECT NUMBER: 408-85978  
 SHEET: 3 OF 13

DESIGN: AEC/DNV  
 DRAWN: DNV  
 APPROVED: [Signature]  
 DATE: 02/04  
 SCALE: NOTED

TL2ND\_55softsiteMAIN