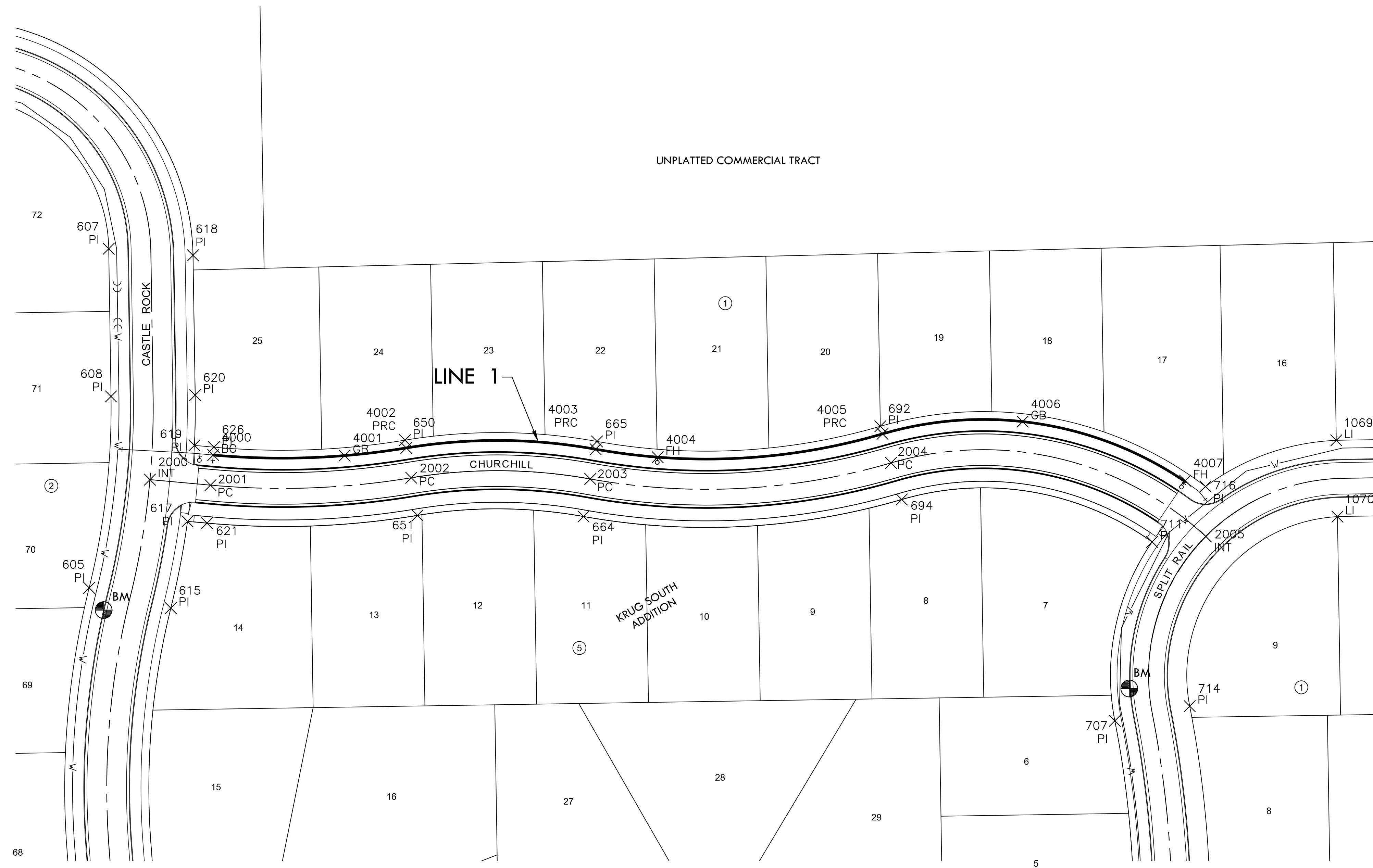


PLOTTED: Monday, August 11, 2014 @ 03:57PM



WATER POINTS			
Point #	Northing	Easting	Desc.
4000	1698977.54	1695629.26	BO
4001	1698977.11	1695729.14	GB
4002	1698982.93	1695776.04	PRC
4003	1698981.97	1695920.01	PRC
4004	1698975.90	1695967.21	FH
4005	1698993.63	1696138.18	PRC
4006	1699002.95	1696244.69	GB
4007	1698958.00	1696368.32	FH

PLAT POINTS			
Point #	Northing	Easting	Desc.
605	1698876.52	1695534.88	PI
607	1699134.43	1695549.79	PI
608	1699022.11	1695551.53	PI
615	1698861.11	1695597.00	PI
617	1698927.10	1695609.69	PI
618	1699129.41	1695613.87	PI
619	1698984.86	1695614.96	PI
620	1699023.10	1695615.52	PI
621	1698925.75	1695624.54	PI
626	1698983.51	1695629.81	PI
650	1698988.85	1695775.06	PI
651	1698931.63	1695784.55	PI
664	1698930.79	1695910.82	PI
665	1698987.87	1695921.07	PI
692	1698999.38	1696136.50	PI
694	1698943.72	1696152.77	PI
707	1698775.36	1696314.84	PI
711	1698911.50	1696343.15	PI
714	1698786.54	1696371.75	PI
716	1698953.58	1696383.80	PI
1069	1698988.70	1696483.20	LI
1070	1698930.68	1696484.10	LI

PAVING POINTS			
Point #	Northing	Easting	Desc.
2000	1698958.83	1695581.12	INT
2001	1698954.63	1695627.17	PC
2002	1698960.24	1695779.81	PC
2003	1698959.33	1695915.94	PC
2004	1698971.55	1696144.64	PC
2005	1698915.57	1696384.07	INT

DATUM & BENCHMARKS

DATUM:
 1 - The Project Horizontal Datum is based on the NAD83-1993, Kansas State Plane Coordinate System, South Zone, (US Survey Feet Definition), with a Combined Adjustment Factor (CAF) of 1.0001200144. All coordinates and dimensions shown on these plans are modified to Ground values.

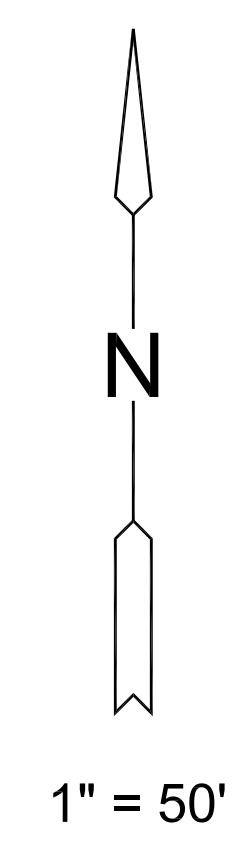
The following equations can be used for conversion:
 Ground Coordinates to State Plane Coordinates = Ground x 1/CAF
 State Plane Coordinates to Ground Coordinates = State Plane x CAF

2 - The Vertical Datum used is NGVD29.

UTILITIES:
 The underground utilities shown hereon were marked in the field by the utility owners in response to Kansas One Call Ticket Number: 14249188

BENCHMARKS:
 BM Chiseled square on top of west curb of Castle Rock between Lots 69 and 70, Block 2. Elev. = 1359.44 NGVD 29

BM Chiseled "+" on front center of curb inlet on west side of Split Rail between Lots 6 and 7, Block 5. Elev. = 1374.52 NGVD 29



EVERY ATTEMPT HAS BEEN MADE TO INSURE ALL COORDINATE VALUES SHOWN ARE AN ACCURATE AND TRUE REPRESENTATION OF THE CURRENT PLANS. ALL VALUES ARE TO BE CONFIRMED WITH THE FINAL SIGNED PLAN SET BEFORE USE.



WATER DISTRIBUTION PLANS FOR
KRUG SOUTH ADDITION
 PHASE 6

©2013 MKEC Engineering All Rights Reserved www.mkec.com
 These drawings and their contents, including, but not limited to, all concepts, designs, & ideas are the exclusive property of MKEC Engineering (MKEC), and may not be used or reproduced in any way without the express consent of MKEC.

BUBBLE MAP

PROJECT NO.	448-90564	
DATE	AUGUST 2014	
SCALE	AS SHOWN	
DESIGNED	DRAWN	CHECKED
AJK	KKL	AJK
NO.	REVISION	DATE