

**GENERAL NOTES:**

- Contractor will be required to provide notice to utility companies a minimum of twenty-four (24) hours prior to any excavation, as follows:  
 Kansas One-Call 687-2470  
 The Contractor must notify the following in case of an emergency:  
 Cox Communications 282-4270  
 Kansas Gas Service 1-888-482-4950  
 Westar Energy 363-8650  
 Aquila Energy 1-888-482-4950  
 Southwestern Bell 269-2245  
 City of Wichita Water Dept. 268-4563  
 City of Wichita Sewer Maint. 268-4024  
 City of Wichita Traffic Maint. 268-4034  
 Conoco Pipeline Co. 1-800-231-2551  
 Williams Pipeline Co. 529-6600  
 Phillips Pipeline Co. 1-800-766-8230
- Utility service lines, poles, valve boxes, meters, and electric are to be adjusted as necessary by others prior to construction unless the plans specifically call for their adjustment by the Contractor or unless the plans specifically identify a utility to be adjusted by its owner during construction. Existing utilities and their location, as shown on the plans, represent the best information available. Contractors are to locate and adjust utilities to be incorporated existing utilities within the right-of-way which do not conflict with proposed construction.
- Rubble from the removal of miscellaneous structures and excess excavation which is to be wasted shall be disposed of on sites to be provided by the Contractor. These sites shall be approved by the Engineer. As to suitability, appearance on site location. Locations, in the opinion of the Engineer, will leave an unsightly appearance will not be approved. All disposal sites must be approved by the Kansas Department of Health and Environment. Material either stockpiled or disposed of in a dump from the project shall be subject to the Agricultural permit. Any material dumped in waters of the United States or wetlands is subject to U.S. Corps of Engineers permitting regulations. Any material buried or stockpiled beyond approved construction limits would require additional archaeological investigations unless buried in a previously approved borrow location.
- Trees and shrubs in public right-of-way which are in direct conflict with proposed new construction shall be removed by the Contractor with the Engineer's approval. Trees and shrubs which are not in direct conflict with proposed new construction shall be saved and protected from damage.
- The Contractor shall give all property owners and/or tenants of developed property abutting the construction of this project a minimum of ten (10) days advance notice prior to start of construction.
- The Contractor shall be responsible for preserving property irons. The Contractor will be required to re-establish any property irons which are damaged or destroyed by his construction operations. Such irons shall be re-established by a licensed land surveyor in accordance with state laws.
- The Contractor shall be responsible for maintaining continuous flow of sewage through construction. Contractor's proposed method for maintaining sewage flow shall be approved by the Engineer. Cost of maintaining flow of sewage through construction will not be paid for directly and this cost shall be considered as subsidiary to the other pay items of work.
- When connecting to existing manhole or stub, the contractor shall reshape manhole bottom or adjust the existing stub's alignment or elevation as necessary. Cost shall be subsidiary to project.
- The Contractor shall grade around exposed manholes at a 1:1 slope. Manholes set lower than existing grade shall have 9" berm constructed around manhole to prevent infiltration into sanitary sewer system. Cost of dirt, labor, equipment, etc. are included in the cost of manhole improvement project as part of the mass grading plan.
- This project does not include seeding. The site will be seeded with the storm water drain project as part of the mass-grading plan.

Lot. 14, Main 19 S.W.1.

**SANITARY SEWER IMPROVEMENTS  
TO SERVE**

**TYLERS LANDING 2ND ADDITION**

**CITY OF WICHITA, KANSAS**

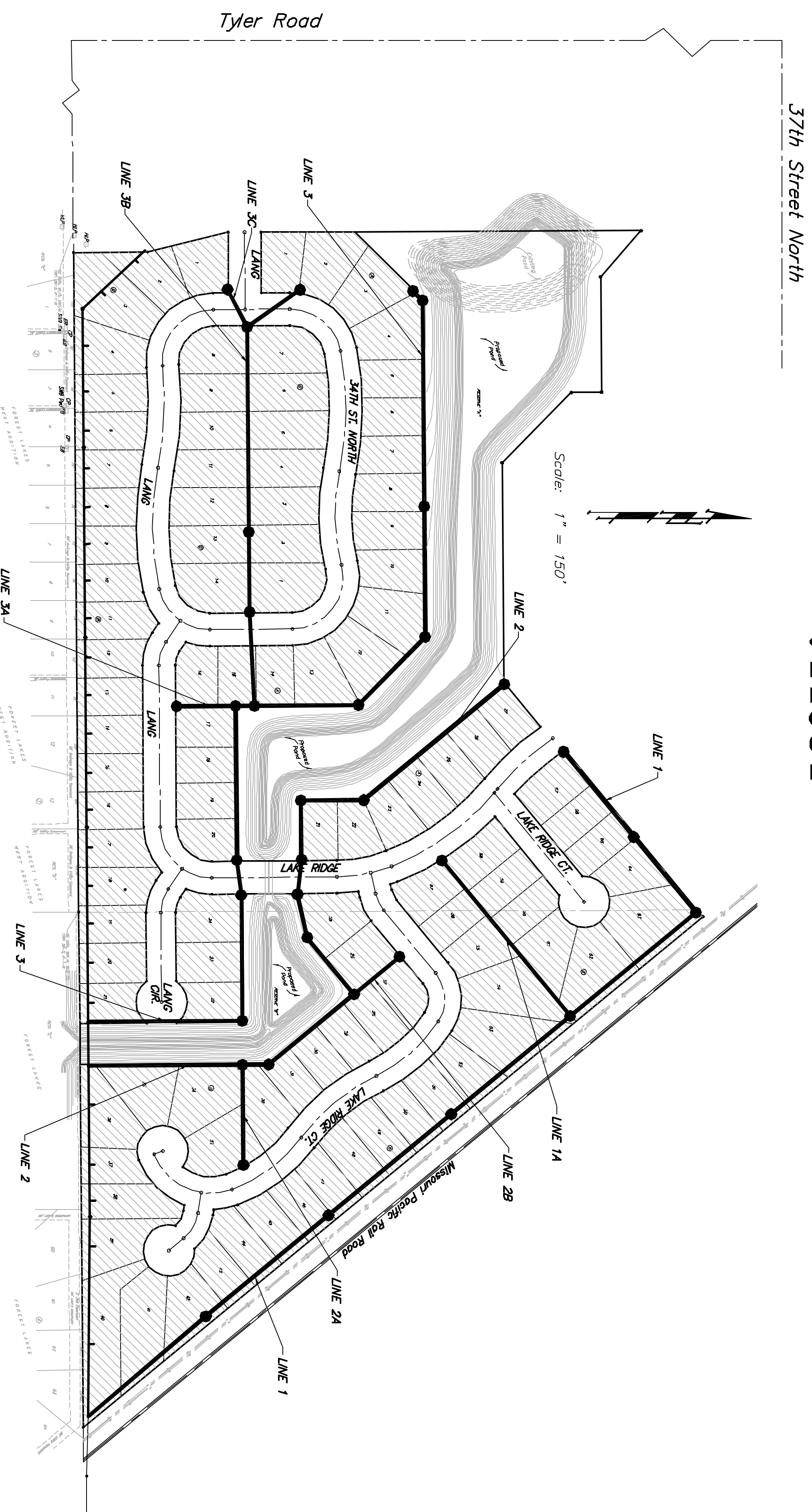
**Jim Armour, P.E. Acting City Engineer**

**Project Number**

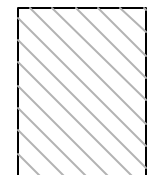
**468-83726**

**©.C.A. Number**

**744034**



**Benefit District**



**Sheet Index**

Title Sheet	1
Line 1	2-3
Line 1A	4
Line 2	4-5
Line 2A & 2B	6
Line 3	7-8
Line 3A & Line 3B	9
Standard Manhole Detail	10
Ring & Cover Detail	11
Riser Detail	12
Erosion Control Plan	13-14
Erosion Control Details	15-18
Copy of Plat	19

**Remarks**

- BM #1: 804 Spike in West face of North High Line Pole in East R/W Tyler Road 1/2 mile of South of 37th Street North. Elev = 176.05 City Datum
- BM #2: "□" Cut Top of Curb on West side of Pepper Ridge 15±, South of Northeast Corner Lot 23, Block 5, Forest Lakes West Addition. Elev = 157.12 City Datum

**Locality Map**

