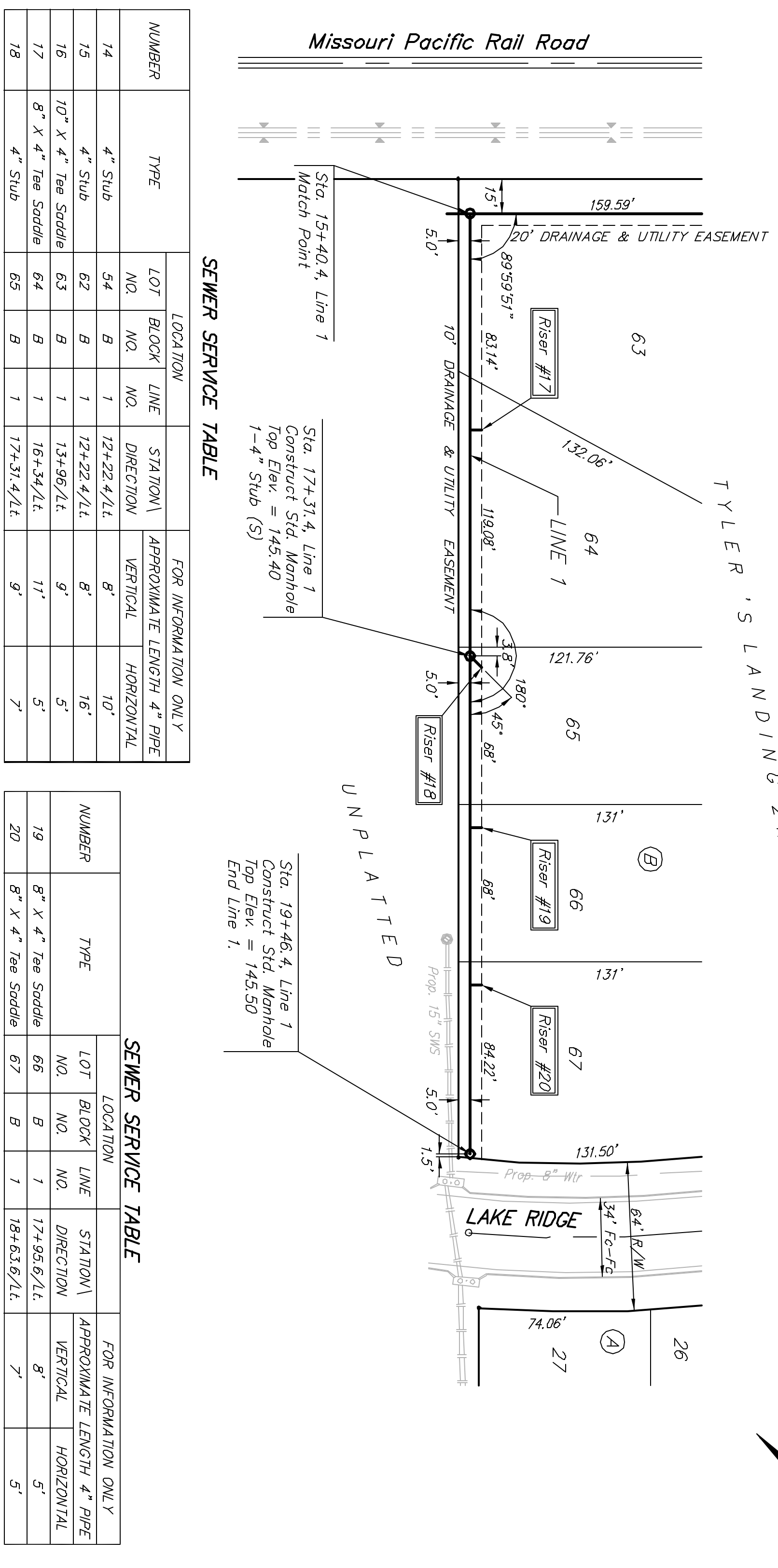
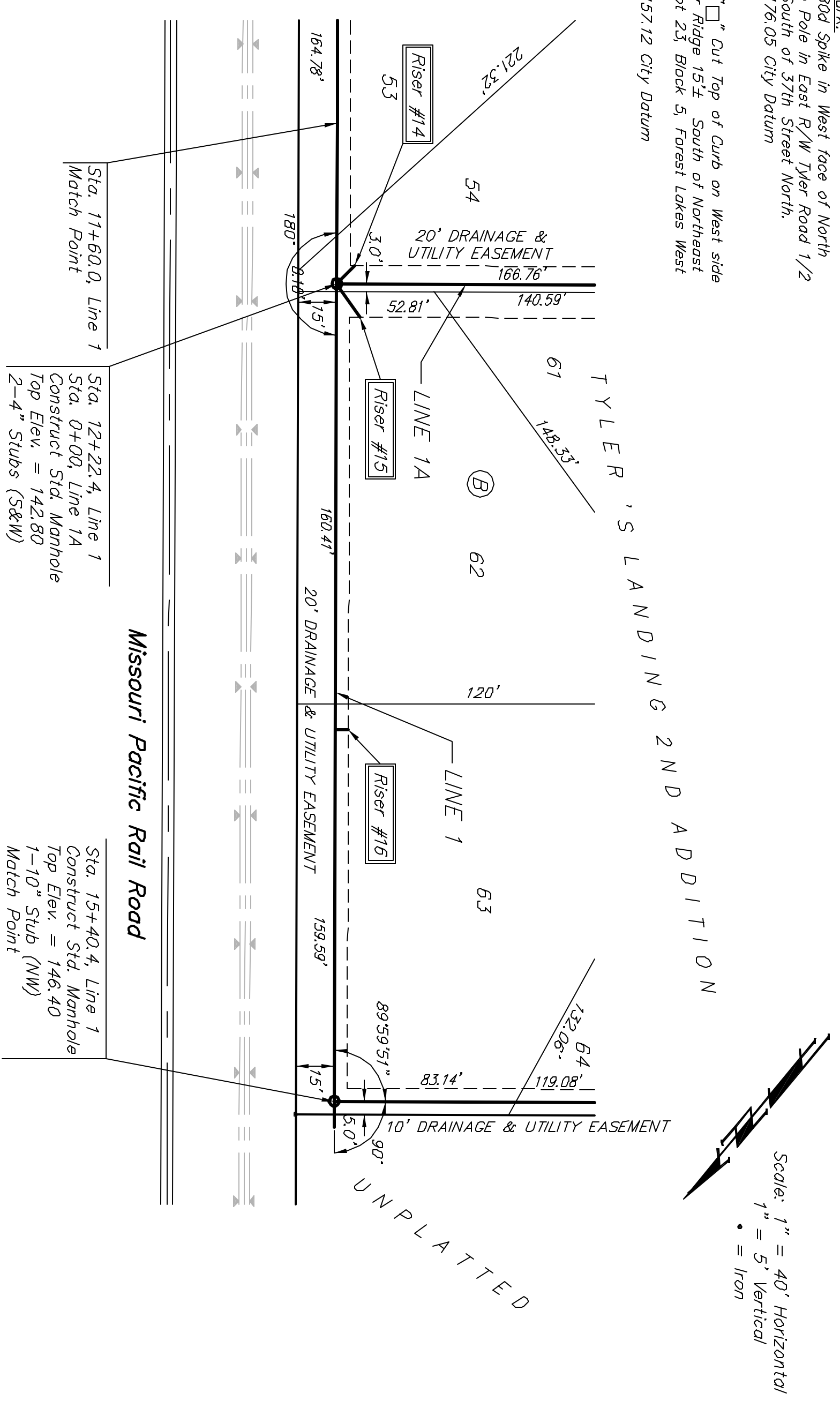


Benchmark: 804 Spike in West face of North High Line Pole in East R/W Tyler Road 1/2 mile South of 37th Street North. Elev. = 176.05 City Datum
 BM #1: "C" Cur Top of Curb on West side of Pepper Ridge 15th South of Northeast Corner Lot 23, Block 5, Forest Lakes West Addition. 157.12 City Datum

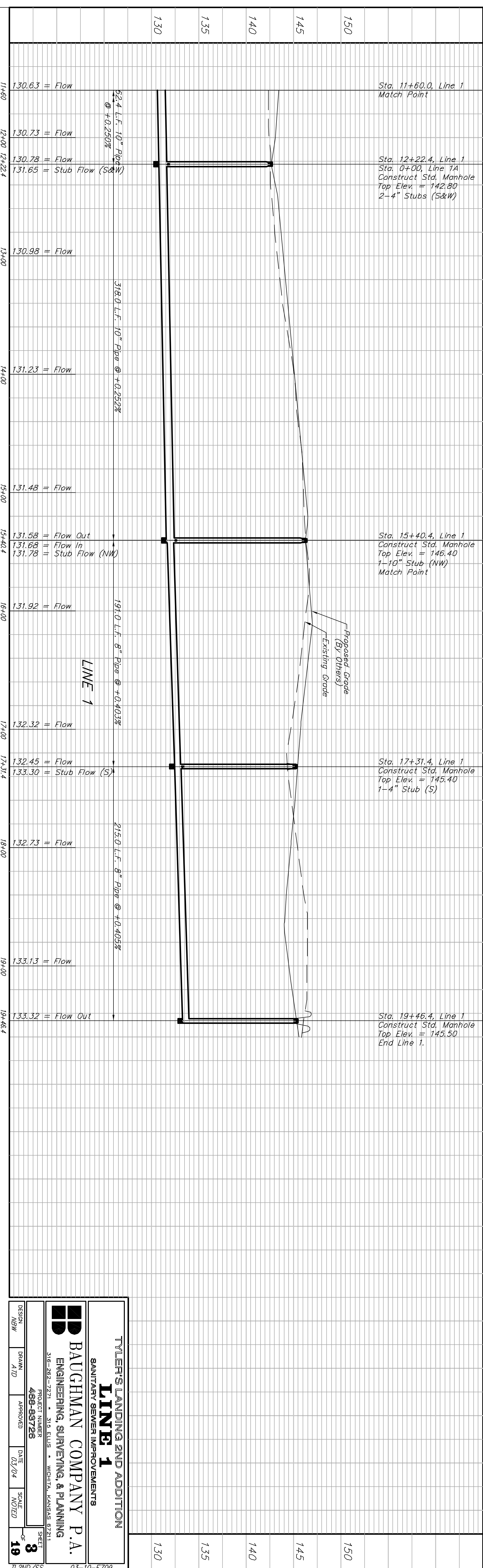


SEWER SERVICE TABLE

NUMBER	TYPE	LOCATION			FOR INFORMATION ONLY	
		LOT NO.	BLOCK NO.	LINE NO.	APPROXIMATE LENGTH 4" PIPE	DIRECTION
14	4" Stub	54	B	1	8'	10'
15	4" Stub	62	B	1	8'	16'
16	10" x 4" Tee Saddle	63	B	1	9'	5'
17	8" x 4" Tee Saddle	64	B	1	11'	5'
18	4" Stub	65	B	1	9'	7'

SEWER SERVICE TABLE

NUMBER	TYPE	LOCATION			FOR INFORMATION ONLY	
		LOT NO.	BLOCK NO.	LINE NO.	APPROXIMATE LENGTH 4" PIPE	DIRECTION
19	8" x 4" Tee Saddle	66	B	1	8'	5'
20	8" x 4" Tee Saddle	67	B	1	7'	5'



TYLER'S LANDING 2ND ADDITION
LINE 1
 SANITARY SEWER IMPROVEMENTS

BAUGHMAN COMPANY P.A.
 ENGINEERING, SURVEYING, & PLANNING
 316-282-7271 • 316 E. ILL. • WICHITA, KANSAS 67211

PROJECT NUMBER: **458-89726**
 SHEET: **3** OF **19**

DESIGN: NEW
 DRAWN: ATD
 APPROVED: [Signature]
 DATE: 03/04
 SCALE: NOTED

03-10-E709 TL2ND/SS