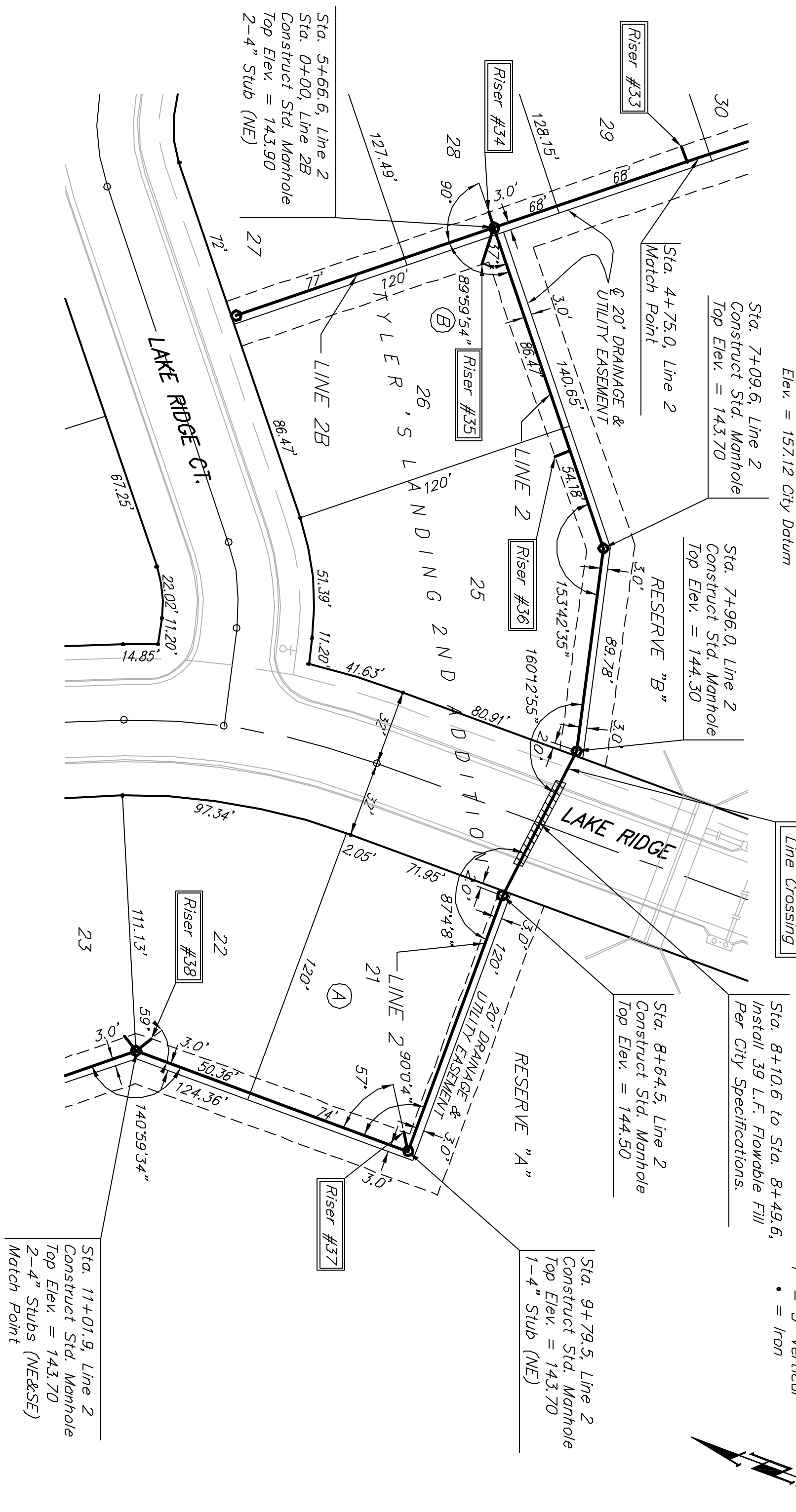


Benchmark: BM #1: 802 Spike in West face of North High Line Pole in East R/W Tyler Road 1/2 mile South of 37th Street North. Elev. = 176.05 City Datum
 BM #2: 1" Cut Top of Curb on West side of Popper Ridge 15'4" South of Northeast Corner Lot 23 Block 5, Forest Lakes West Addition. Elev. = 157.12 City Datum

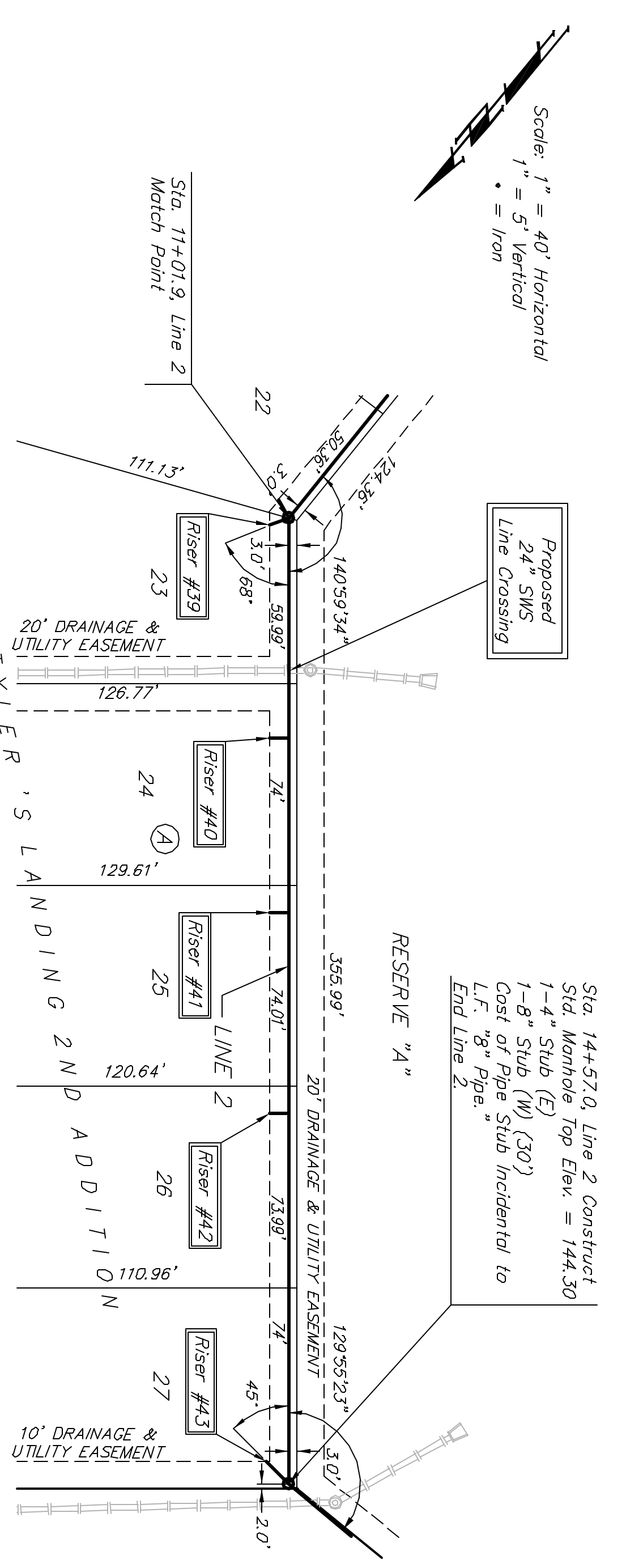


Scale: 1" = 40' Horizontal
 1" = 5' Vertical
 • = Iron
 • = Non

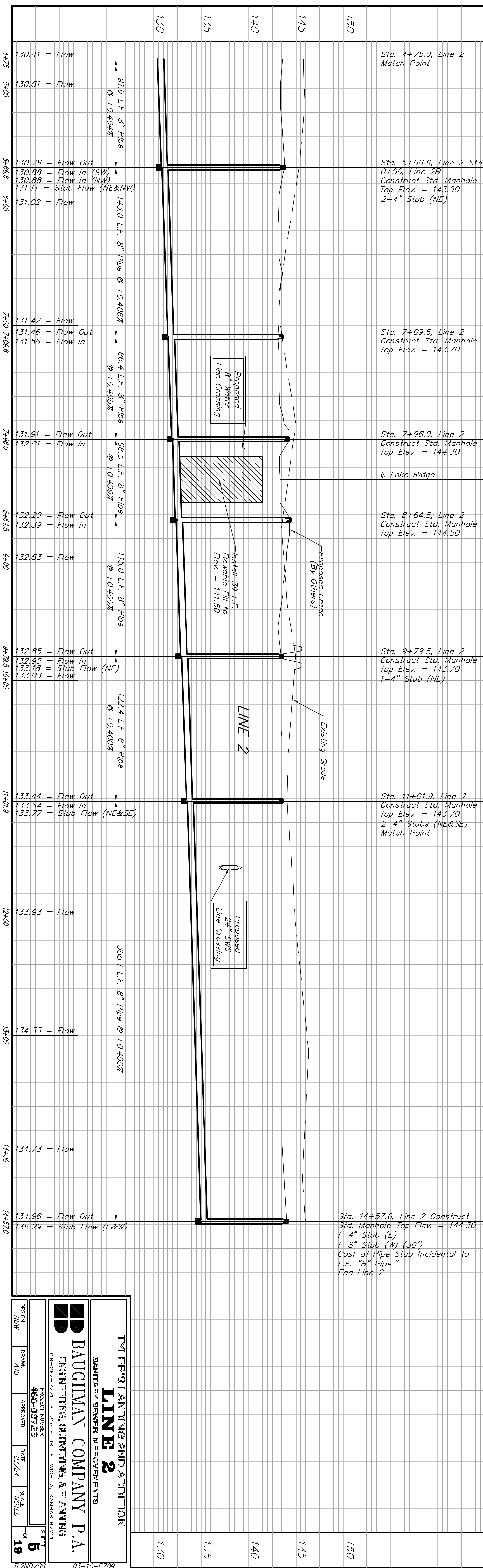
Scale: 1" = 40' Horizontal
 1" = 5' Vertical
 • = Iron
 • = Non

NUMBER	TYPE	LOCATION		STATION	DIRECTION	FOR INFORMATION ONLY	
		LOT NO.	BLOCK NO.			APPROXIMATE LENGTH	PIPE
33	8" x 4" Tee Saddle	29	B	4+80.0	RL	9'	7"
34	4" Stub	28	B	5+66.6	RL	9'	7"
35	4" Stub	26	B	5+66.6	RL	9'	15"
36	8" x 4" Tee Saddle	25	B	6+66.6	RL	7'	7"
37	4" Stub	21	A	9+79.5	RL	6'	8'
38	4" Stub	22	A	10+01.9	RL	6'	8'
39	4" Stub	23	A	11+01.9	RL	6'	8'
40	8" x 4" Tee Saddle	24	A	11+73.0	RL	5'	7"
41	8" x 4" Tee Saddle	25	A	12+47.0	RL	5'	7"
42	8" x 4" Tee Saddle	26	A	13+21.0	RL	5'	7"
43	4" Stub	27	A	14+57.0	RL	5'	8'

SEWER SERVICE TABLE



Scale: 1" = 40' Horizontal
 1" = 5' Vertical
 • = Iron
 • = Non



TYLER'S LANDING 2ND ADDITION
 SANITARY SEWER IMPROVEMENTS
LINE 2

BAUGHMAN COMPANY P.A.
 ENGINEERING, SURVEYING, & PLANNING

PROJECT NUMBER: 315-282-2221 • 315 ELLIS • WICHITA, KANSAS 67221
 SHEET: 5 OF 19
 DESIGN: NEW
 DRAWN: A/D
 APPROVED: [Signature]
 DATE: 03/04
 SCALE: NOTED