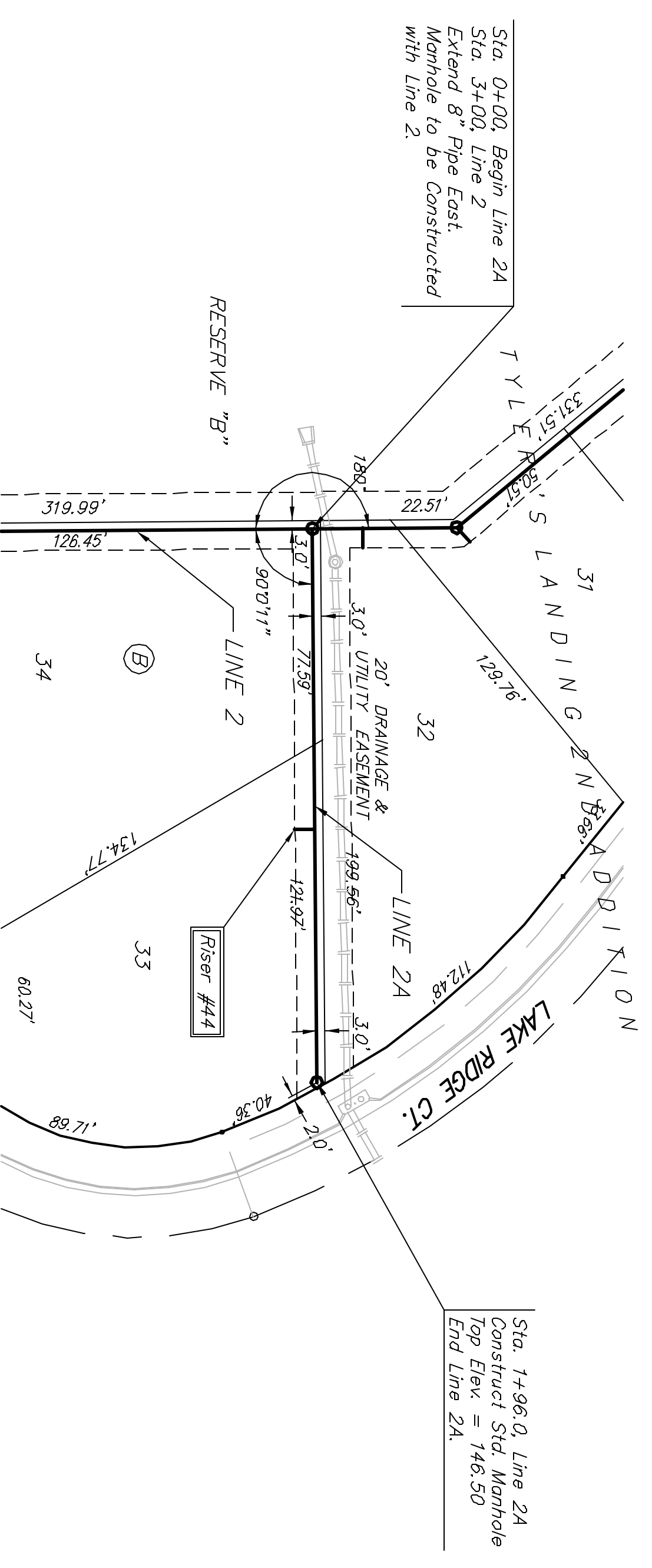


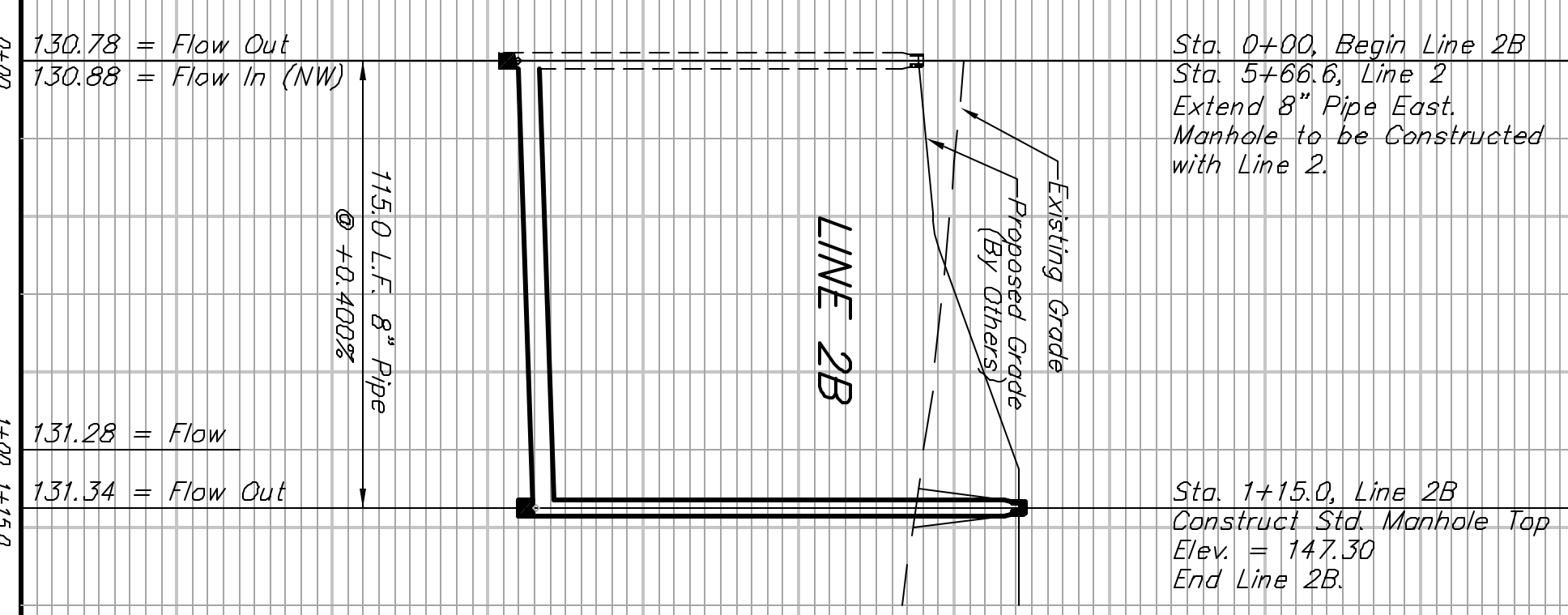
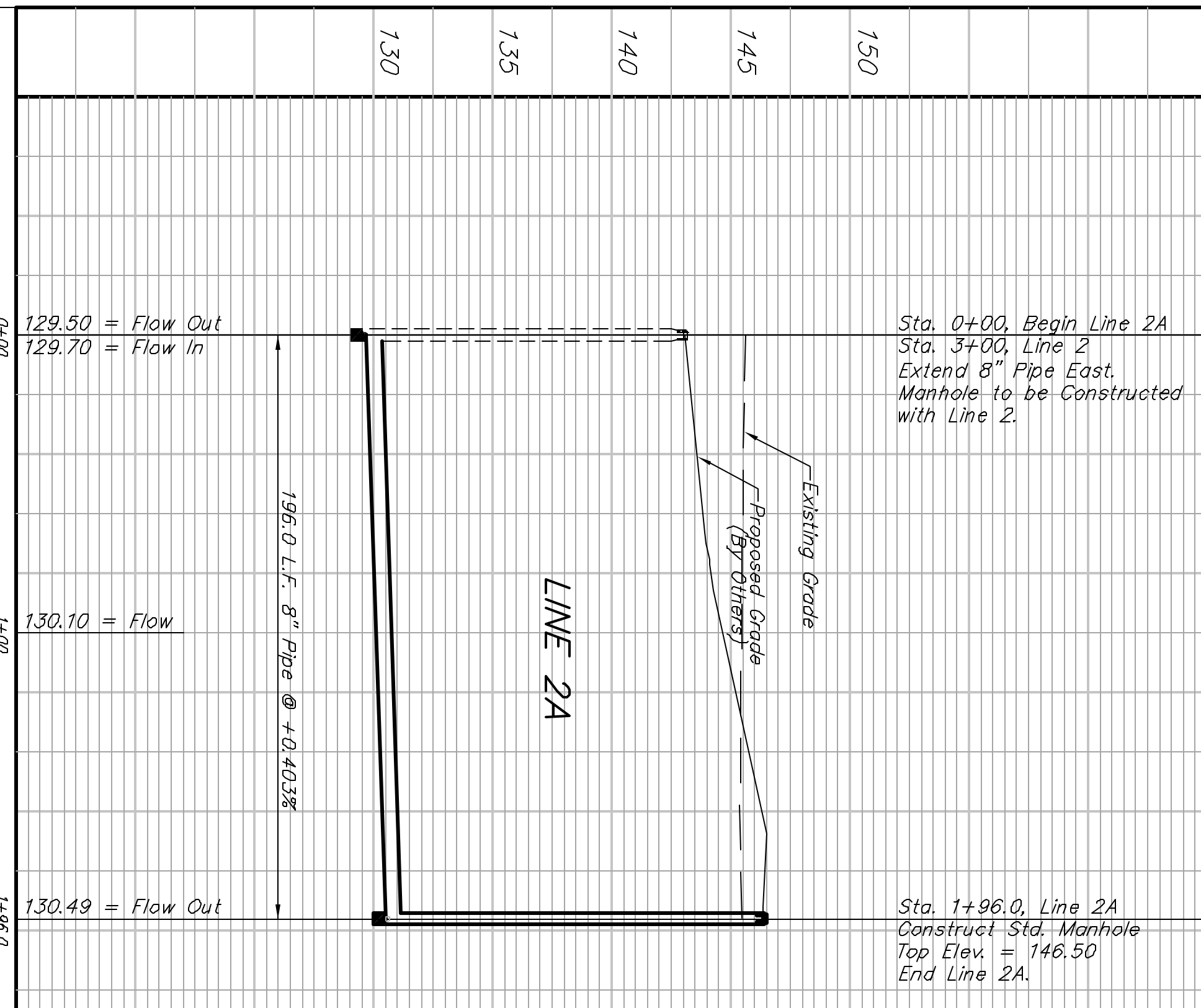
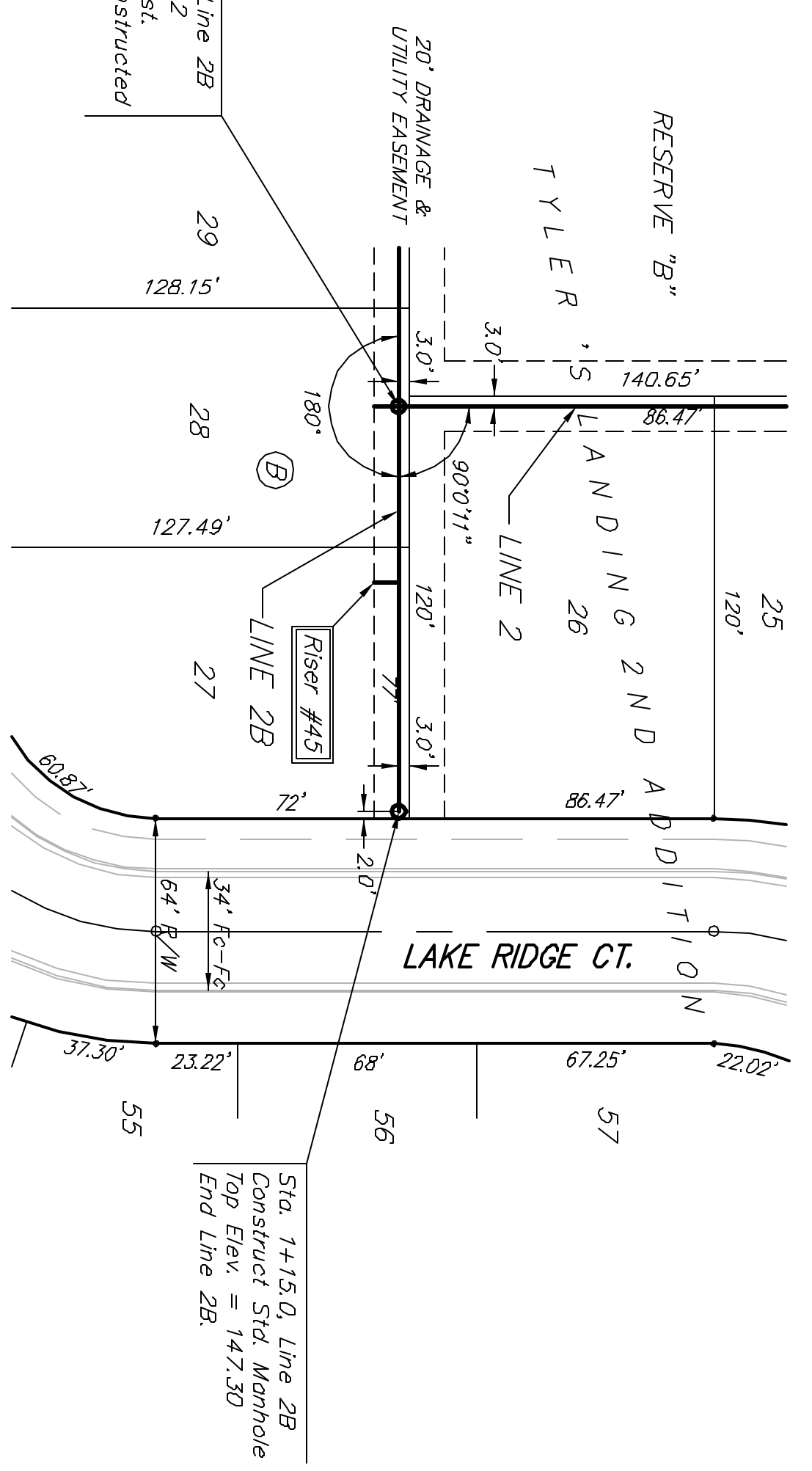
Benchmark: BM #1: 804 Spike in West face of North High Line Pole in East R/W Tyler Road 1/2 mile of South of 37th Street North. Elev. = 176.05 City Datum

BM #2: "I" Out Top of Curb on West side of Paper Ridge 1512 South of Northwest Corner Lot 23, Block 5, "East" Lakes West Addition. Elev. = 157.12 City Datum



SEWER SERVICE TABLE

NUMBER	TYPE	LOCATION			STATION \ DIRECTION	FOR INFORMATION ONLY	
		LOT NO.	BLOCK NO.	LINE NO.		APPROXIMATE LENGTH 4" PIPE	VERTICAL
44	8" X 4" Tee Saddle	33	B	24	1+06/RL	10'	7'
45	8" X 4" Tee Saddle	27	B	2B	0+50/RL	9'	7'



**TYLER'S LANDING 2ND ADDITION
LINE 2A & LINE 2B
SANITARY SEWER IMPROVEMENTS**

BAUGHMAN COMPANY P.A.
ENGINEERING, SURVEYING, & PLANNING

316-262-7271 • 312 S. ELLIS • WICHITA, KANSAS 67211

PROJECT NUMBER: 408-83729
SHEET: 6 OF 19

DESIGN: NEW
DRAWN: A/D
APPROVED: [Signature]
DATE: 03/04
SCALE: NOTED