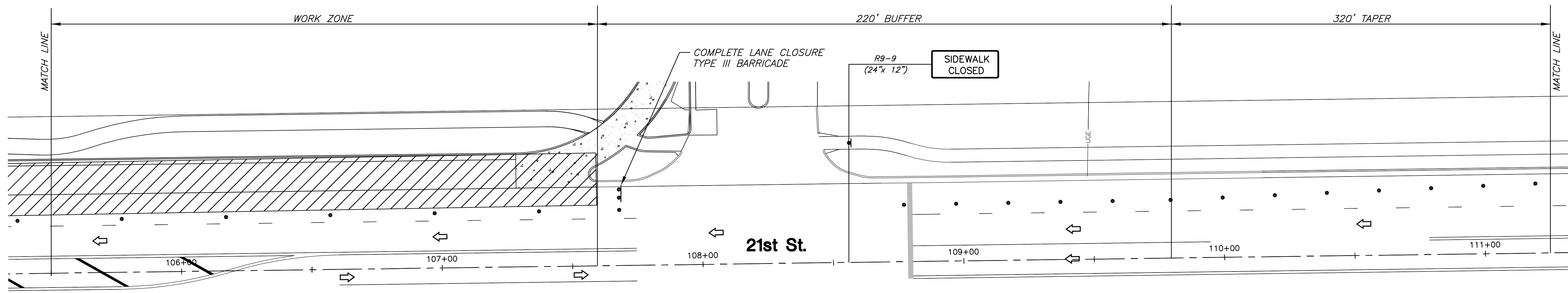
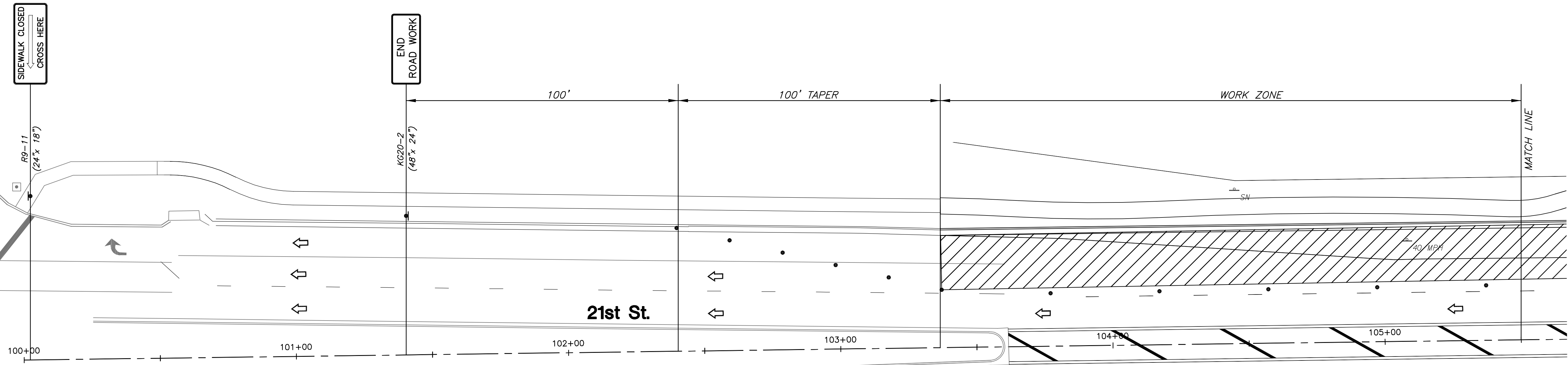


PLOTTED: Tuesday, July 29, 2014 @ 05:32PM

K-96 NORTHBOUND RAMP



PAVING PLANS FOR
MESSIAH BAPTIST CHURCH 4TH ADDITION
21ST STREET RIGHT TURN LANE

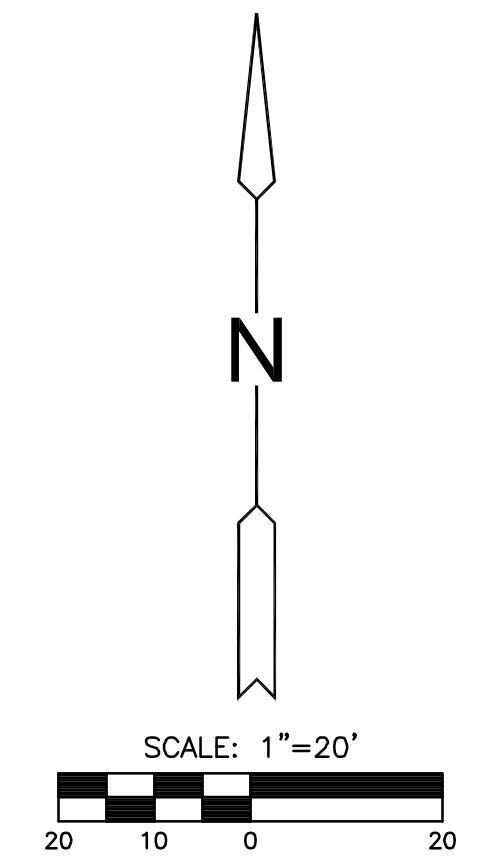
©2013 MKEC Engineering All Rights Reserved
www.mkec.com
These drawings and their contents, including, but not limited to, all concepts, designs, & ideas are the exclusive property of MKEC Engineering (MKEC), and may not be used or reproduced in any way without the express consent of MKEC.

TRAFFIC CONTROL PLAN
1

PROJECT NO.	472-85168	
DATE	JULY 2014	
SCALE	1"=20'	
DESIGNED	DRAWN	CHECKED
SPE	SPE	GJA

NO.	REVISION	DATE

SHEET NO.
17 OF 28



- LEGEND**
-  ONE POST SIGN
 -  WORK AREA
 -  REFLECTORIZED DRUM
 -  DIRECTION OF TRAFFIC

J:\PROJECTS\2013\13010706_NEWSPRING_CHURCH-CIVIL\CAD\TRAFFIC CONTROL\13706_T01.DWG