

FINAL PLAT

KISER WEST ADDITION

AN ADDITION TO WICHITA SEDGWICK COUNTY, KANSAS

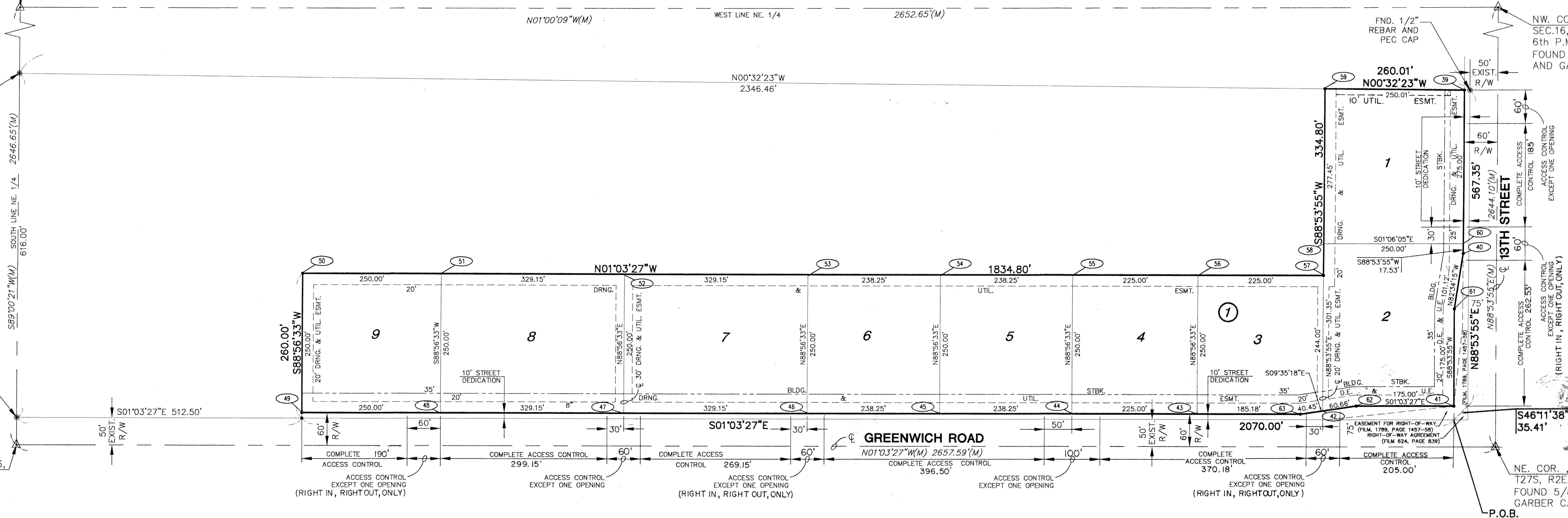
SW. COR., NE. 1/4 SEC.16,
T27S, R2E, 6th P.M.
FOUND CENTER OF SECTION
STONE

FOUND 1" PIPE 0.2'
SOUTH AND 0.3' EAST
OF DEEDED CORNER

SE. COR., NE. 1/4 SEC.16,
T27S, R2E, 6th P.M.
FOUND 3/4" PIPE

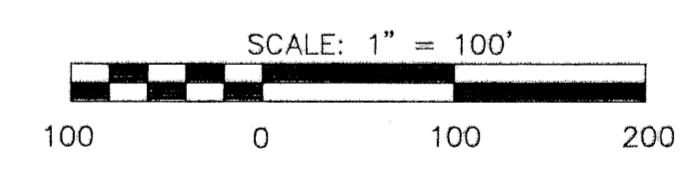
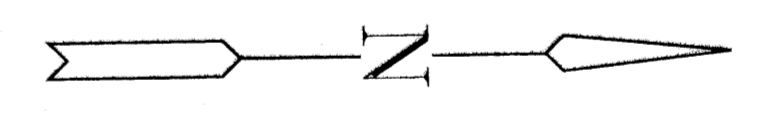
NW. COR., NE. 1/4
SEC.16, T27S, R2E,
6th P.M.
FOUND 5/8" REBAR
AND GARBER CAP

NE. COR., NE. 1/4 SEC.16,
T27S, R2E, 6th P.M.
FOUND 5/8" REBAR AND
GARBER CAP



COORDINATE LIST		
POINT	NORTH	EAST
39	1,694,407.3171	1,685,652.0486
40	1,694,412.9399	1,685,944.5246
41	1,694,403.2287	1,686,219.7634
42	1,694,168.2959	1,686,233.1012
43	1,693,943.2628	1,686,243.2574
44	1,693,718.3011	1,686,247.4105
45	1,693,480.0917	1,686,251.8081
46	1,693,241.8823	1,686,256.2057
47	1,692,912.7884	1,686,262.2811
48	1,692,583.6944	1,686,268.3566
49	1,692,333.7269	1,686,272.9713
50	1,692,329.1124	1,686,023.0139
51	1,692,579.0805	1,686,018.3992
52	1,692,908.1744	1,686,012.3237
53	1,693,237.2683	1,686,006.2483
54	1,693,475.4777	1,686,001.8507
55	1,693,713.6872	1,685,997.4531
56	1,693,938.6488	1,685,993.3000
57	1,694,163.7512	1,685,989.1444
58	1,694,162.6492	1,685,931.8032
59	1,694,157.3181	1,685,654.4037
60	1,694,412.6030	1,685,926.9978
61	1,694,399.8649	1,686,044.7957
62	1,694,228.1085	1,686,222.9963
63	1,694,128.4112	1,686,239.8394

③ = COORDINATE POINT NO.



- LEGEND**
- = FOUND 1/2" REBAR AND PEC CAP
 - = SET 5/8" REBAR/MKEC CLS 39
 - △ = FOUND SECTION CORNER MONUMENT
 - (M) = MEASURED DIMENSION
 - U.E. = UTILITY EASEMENT
 - D.E. = DRAINAGE EASEMENT

DSNR: KJW OPER: TRO SCALE: 1=100.00
 Q:\2003\035556\Plat02 03-01-2004 04:01:35 pm

	Revision _____ By _____ Date _____ CITY OF WICHITA, KANSAS JAMES L. ARMOUR, P.E. - ACTING CITY ENGINEER LATERAL 361 FOUR MILE CREEK SEWER PLAT CITY OF WICHITA PROJECT NO. 448-83747 Professional Engineering Consultants, P.A. 303 S. TOPEKA • WICHITA, KANSAS 67202 316-262-2691 • FAX 316-262-3003		
	Designed by KJW, ALA Job No. 35-03556-042 Sht. 4 of 22 Drawn by _____ Date DECEMBER 2003		