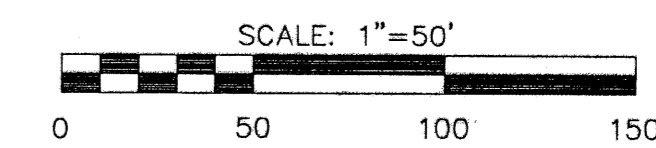
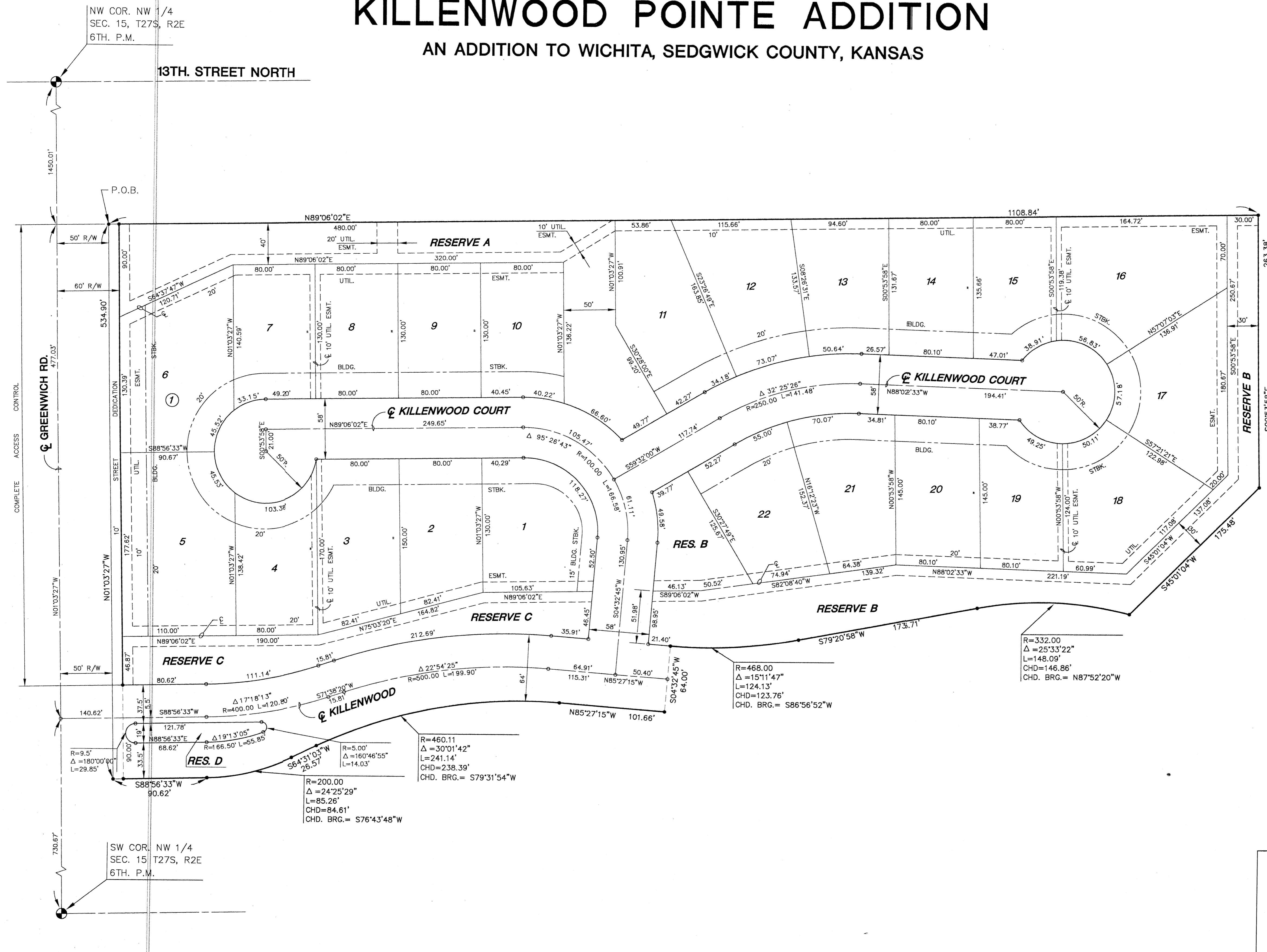


# FINAL PLAT

## KILLENWOOD POINTE ADDITION

### AN ADDITION TO WICHITA, SEDGWICK COUNTY, KANSAS



- LEGEND**
- = I.P.
  - B.S. = BUILDING SETBACK
  - U.E. = UTILITY EASEMENT
  - D.&U.E. = DRAINAGE & UTILITY EASEMENT

DSNR: KJW OPER: IRO SCALE: 1"=50.00  
 Q:\2003\03556\Plot03 03-01-2004 04:02:33 pm

No.	Revision	By	Date
	CITY OF WICHITA, KANSAS JAMES L. ARMOUR, P.E. - ACTING CITY ENGINEER LATERAL 361 FOUR MILE CREEK SEWER		
<b>PLAT</b>			
CITY OF WICHITA PROJECT NO. 448-83747			
<b>Professional Engineering Consultants, P.A.</b> 303 S. TOPEKA • WICHITA, KANSAS 67202 316-262-2691 • FAX 316-262-3003			
Designed by	KJW, ALA	Job No.	35-03556-042
Drawn by		Date	DECEMBER 2003
			Sht. 5 of 22

