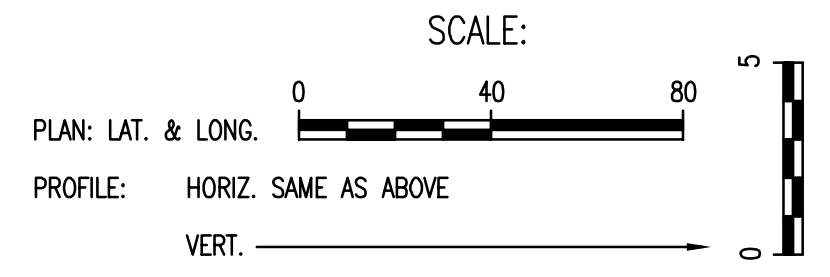
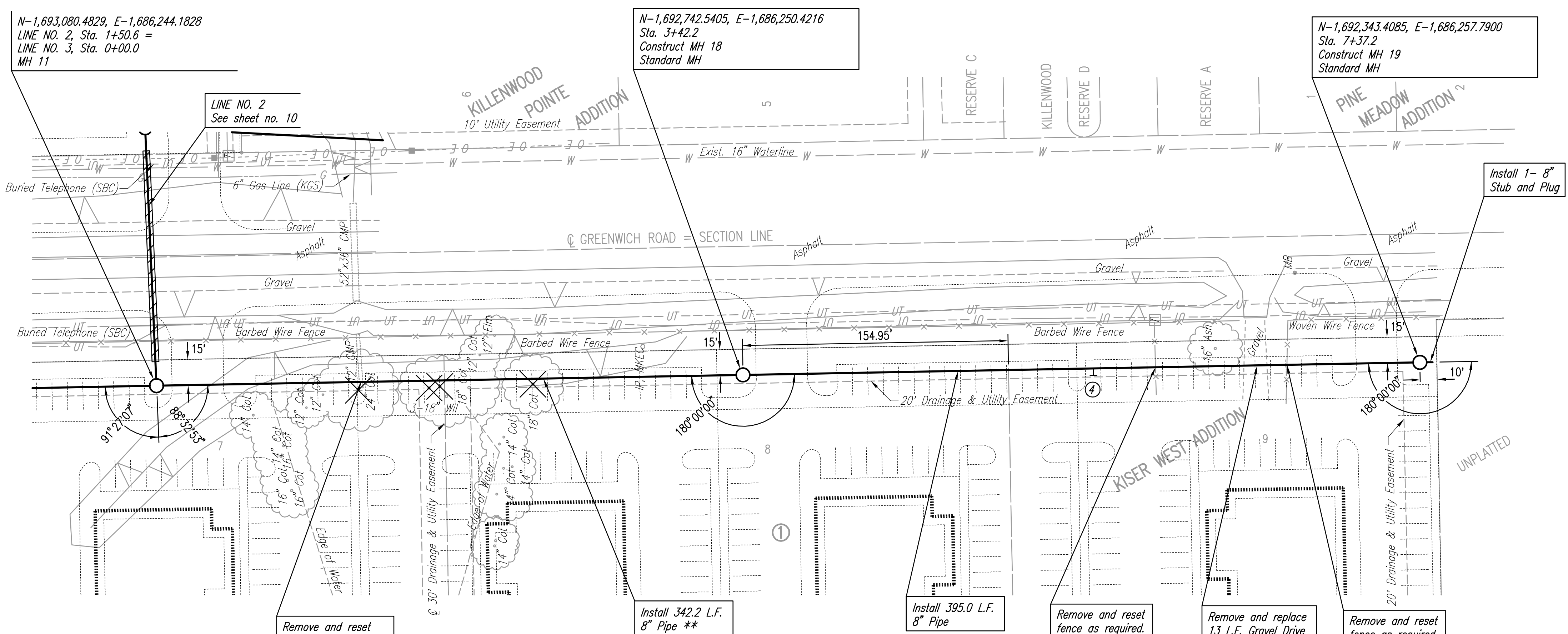


PLAN	CHECKED	CHECKED
BY		
DATE		

PROFILE	CHECKED	CHECKED
BY		
DATE		

DSNR: KJW OPER: TRO SCALE: 1"=40.00
 Q:\2003\035556\SSPP08 03-03-2004 10:55:05 am



** THE CONTRACTOR SHALL REMOVE THE STORM SEWER DETENTION BERM AND DE-WATER THIS AREA AS NEEDED TO CONSTRUCT THE SANITARY SEWER BETWEEN MH 11 AND MH 18. THE BERM SHALL BE REPLACED, IN KIND, UPON COMPLETION OF THIS SECTION OF SANITARY SEWER CONSTRUCTION. ALL COSTS ASSOCIATED WITH THIS WORK SHALL BE CONSIDERED SUBSIDIARY TO PROJECT COSTS.

Remove and reset 12" CMP as required.

Install 342.2 L.F. 8" Pipe **

Install 395.0 L.F. 8" Pipe

Remove and reset fence as required.

Remove and replace 13 L.F. Gravel Drive in kind.

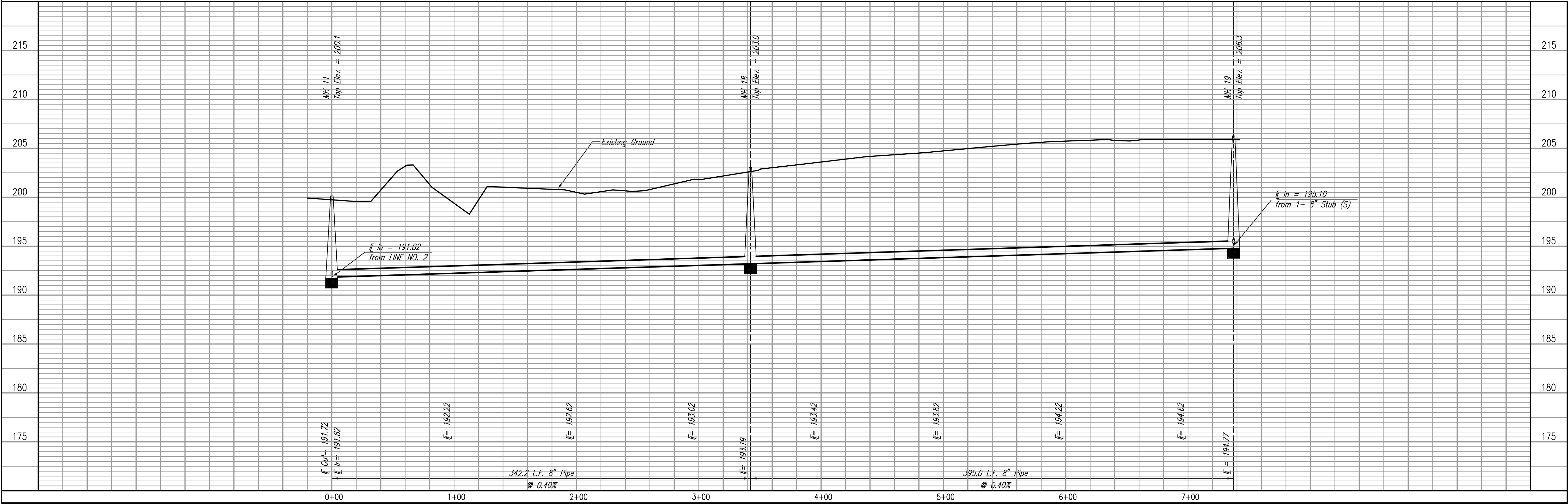
Remove and reset fence as required.

SEE SHEETS NO. 3 AND 4 FOR PLAT COORDINATES

① DENOTES SEWER SERVICE. SEE SHEET NO. 18 FOR SEWER SERVICE SCHEDULE AND DETAILS

SANITARY SEWER LINE NO. 3

X = Denotes Tree removal



SANITARY SEWER LINE NO. 3
 LATERAL 361
 FOUR MILE CREEK SEWER

Professional Engineering Consultants, P.A.
 803 S. FOREA WY. COLUMBIA, MISSISSIPPI 39202
 313-262-2691 • FAX 313-262-3005
 Designed By: KJW, ALA
 Drawn By: CSL, TRO
 Job No.: 03556-042
 Date: DECEMBER 2003