

STORMWATER SEWER PLANS BRIGHTON COURTS ADDITION STORMWATER SEWER #603 PROJECT NO. 468-83749

CITY OF WICHITA, KANSAS
NEIL D. CABLE, CITY ENGINEER
OCA NO. 751352

GENERAL NOTES

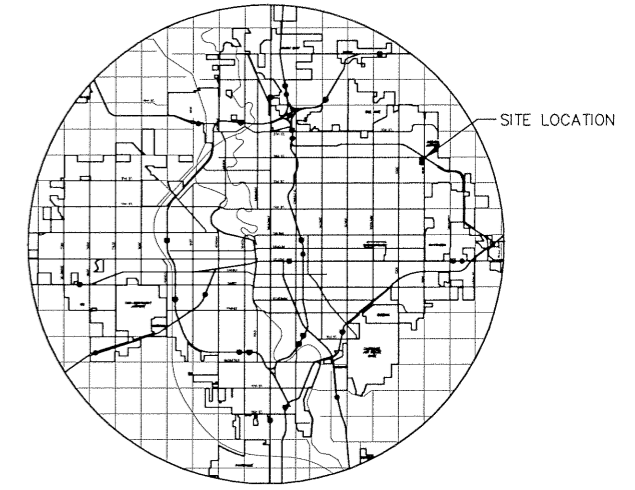
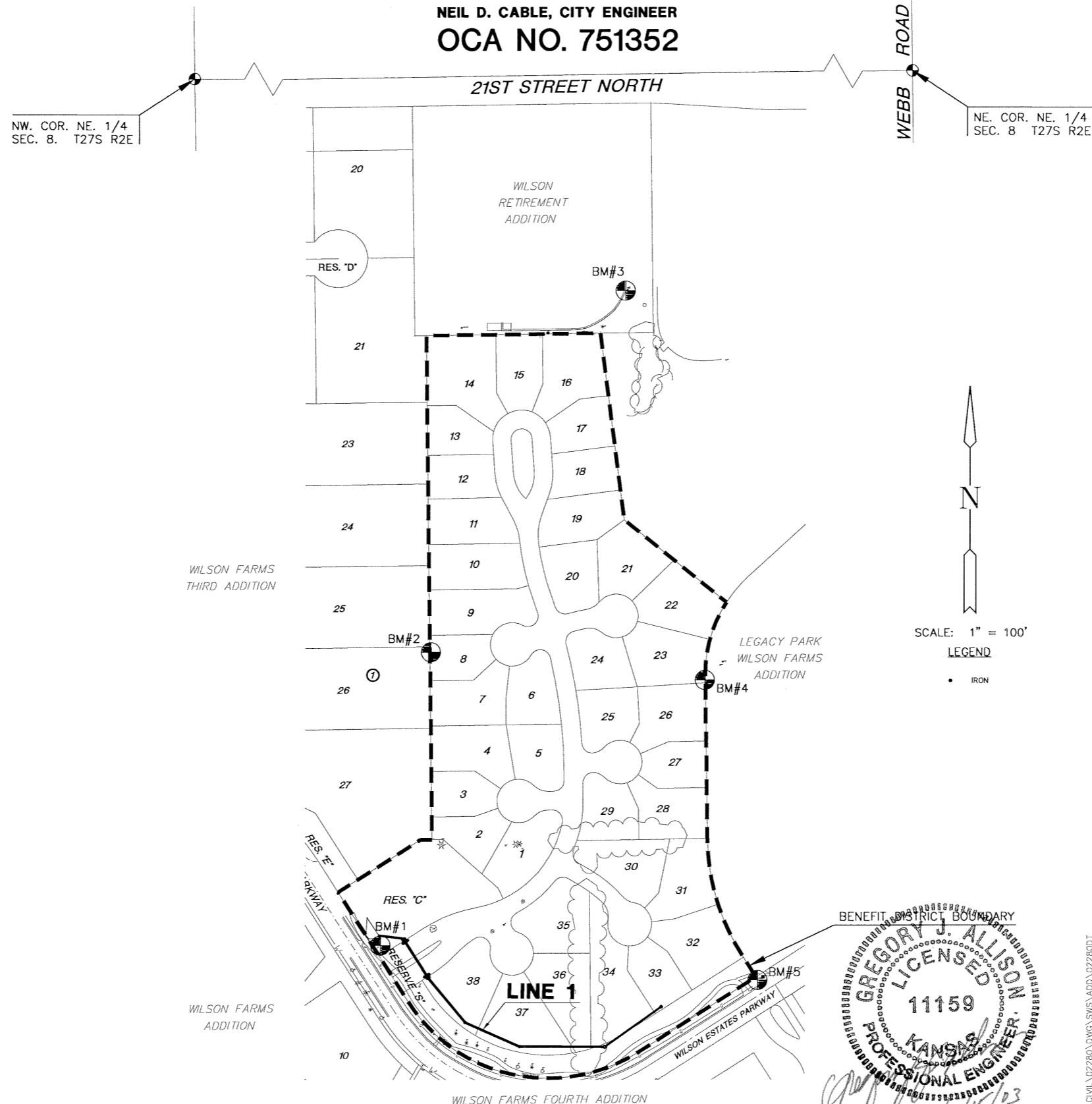
1. UNLESS SHOWN OR OTHERWISE STATED ON THESE DRAWINGS, MATERIALS AND CONSTRUCTION SHALL BE IN ACCORDANCE WITH THE CITY OF WICHITA STANDARD SPECIFICATIONS.
2. THE TOPS OF INLETS AND MANHOLES AS NOTED ON THE PLANS MAY VARY SO AS TO MEET PROPOSED TOP OF CURB ELEVATIONS OR PAVEMENT ELEVATIONS. THE FIELD ENGINEER SHALL LOCATE INLETS AND MANHOLES WITH REFERENCE TO PROPOSED PAVING PLANS OF THE PERTINENT STREETS.
3. ALL CONCRETE SHALL BE STANDARD PAVING MIX UNLESS OTHERWISE NOTED.
4. THE CONTRACTOR SHALL BE RESPONSIBLE FOR PRESERVING PROPERTY IRONS. THE CONTRACTOR SHALL BE REQUIRED TO RE-ESTABLISH ANY PROPERTY IRONS WHICH ARE DAMAGED OR DESTROYED BY HIS CONSTRUCTION OPERATIONS. SUCH IRONS SHALL BE RE-ESTABLISHED BY A LICENSED LAND SURVEYOR IN ACCORDANCE WITH STATE LAWS.
5. TREES TO BE REMOVED ARE MARKED . ALL TREES WHICH IN THE OPINION OF THE FIELD ENGINEER CAN BE SAVED, SHALL BE SAVED.
6. CONTRACTOR SHALL NOTIFY UTILITY COMPANIES OF CONSTRUCTION SCHEDULING.
7. EXISTING UTILITIES AND THEIR LOCATIONS, AS SHOWN ON THE PLANS REPRESENT THE BEST INFORMATION OBTAINABLE FOR DESIGN. LOCATION INFORMATION HAS BEEN OBTAINED FROM THE VARIOUS COMPANIES AND IS EITHER FROM COMPANY UTILITY DRAWINGS OR COMPANY PROVIDED FIELD LOCATIONS. THE PLAN LOCATIONS SHOWN ARE NOT GUARANTEED. ADDITIONAL EXISTING UTILITIES MAY ALSO BE ENCOUNTERED.
8. CONTRACTOR WILL BE REQUIRED TO PROVIDE A MINIMUM ADVANCE NOTICE OF SEVENTY-TWO (72) HOURS TO UTILITY COMPANIES TO STARTING ANY EXCAVATION AS FOLLOWS:

KANSAS ONE-CALL 800-344-7233
OR 687-2470 (LOCAL WICHITA)

THE CONTRACTOR MUST NOTIFY THE FOLLOWING IN CASE OF EMERGENCY:

| | |
|-------------------------------|--------------|
| COX COMMUNICATIONS (CABLE) | 262-0661 |
| WESTAR (ELECTRIC) | 261-6512 |
| KANSAS GAS SERVICE (GAS) | 832-3101 |
| SBC (TELEPHONE) | 800-870-8390 |
| CITY OF WICHITA WATER & SEWER | 262-6000 |
| AQUILA (GAS) | 946-0096 |

9. RUBBLE FROM THE REMOVAL OF MISCELLANEOUS STRUCTURES AND EXCESS EXCAVATION WHICH IS TO BE WASTED SHALL BE DISPOSED OF ON SITES TO BE PROVIDED BY THE CONTRACTOR. THESE SITES SHALL BE APPROVED BY THE ENGINEER AS TO SUITABILITY, APPEARANCE AND SITE LOCATION. LOCATIONS THAT, IN THE OPINION OF THE ENGINEER, WILL LEAVE AN UNSIGHTLY APPEARANCE WILL NOT BE APPROVED. ALL DISPOSAL SITES MUST BE APPROVED BY THE KANSAS DEPARTMENT OF HEALTH AND ENVIRONMENT. MATERIAL EITHER STOCKPILED OR DISPOSED OF IN A FLOOD PLAIN WOULD REQUIRE A KANSAS STATE BOARD OF AGRICULTURE PERMIT. ANY MATERIAL DUMPED IN WATERS OF THE UNITED STATES OR WETLANDS IS SUBJECT TO U.S. CORPS OF ENGINEERS PERMITTING REGULATIONS. ANY MATERIAL BURIED OR STOCKPILED BEYOND APPROVED CONSTRUCTION LIMITS WOULD REQUIRE ADDITIONAL ARCHAEOLOGICAL INVESTIGATIONS UNLESS BURIED IN A PREVIOUSLY APPROVED BORROW LOCATION.
10. ALL DISTURBED AREAS TO BE SEEDED WITH RYE GRASS AT A RATE OF 200 LBS. PER ACRE WITHIN 10 DAYS OF CONSTRUCTION. CONTRACTOR TO PREPARE GROUND PER CITY SPECIFICATIONS. COST IS SUBSIDIARY TO SITE PREPARATION AND RESTORATION.
11. THE FOLLOWING TYPES OF PIPE WILL BE ALLOWED FOR THE "SWS PIPE": RCP, PVC, OR ADS N-12 WT PIPE AS MANUFACTURED BY ADVANCED DRAINAGE SYSTEM, INC. CONTRACTOR TO SUBMIT MATERIAL SPECIFICATIONS/CERTIFICATIONS TO ENGINEER PRIOR TO CONSTRUCTION.



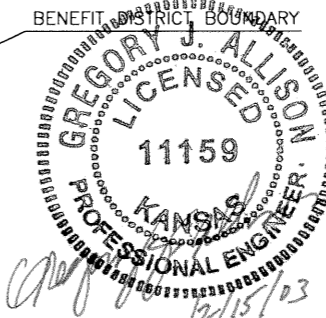
LOCATION MAP

INDEX TO DRAWINGS

| SHEET NO. | DESCRIPTION |
|-----------|-------------|
| 1 | TITLE SHEET |
| 2-4 | DETAILS |
| 5-6 | LINE 1 |
| 7-8 | BMP DETAILS |
| 9 | FINAL PLAT |

BENCHMARKS

- BM#1- "□" CUT ON THE S END OF THE E HEADWALL OF RCB, 101' S & 20' E OF THE SOUTHERNMOST COR. COR. OF LOT 27, BLK 1, WILSON FARMS 3RD ADD. ELEV = 189.38
- BM#2- RR SPIKE IN THE EAST FACE OF A 21" TREE IN THE HEDGEROW NEAR THE MID-POINT OF THE WEST LINE OF BRIGHTON COURTS ADDITION. ELEV = 200.85
- BM#3- "□" CUT ON TOP OF E CURB OF DRIVE INTO ALTERRA RETIREMENT HOME, 72' N & 47' W OF THE SE COR. OF WILSON RETIREMENT ADDITION. ELEV = 204.12
- BM#4- "□" CUT TOP OF RCB END SECTION AT SE COR. OF LOT 23, BLK 1, BRIGHTON COURTS ADDITION. ELEV = 197.07
- BM#5- "□" CUT TOP OF CURB ON THE N SIDE OF WILSON ESTATES PARKWAY AT SE COR. OF BRIGHTON COURTS ADDITION. ELEV = 197.07



MKEC
ENGINEERING
CONSULTANTS
411 N. WEBB ROAD
WICHITA, KS. 67206
316 - 684 - 9600

BRIGHTON COURTS ADDITION
PROJECT NAME

STORM WATER SEWER PLANS
SHEET TITLE

| | | |
|-----------------------|------------------|--------------------|
| DFL DESIGN BY: | DMU DRAWN BY: | GJA CHECKED BY: |
| DECEMBER 2003 DATE | 02280 JOB NO. | 1 / 9 SHEET/OF |