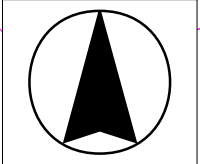


Install 250 lf of 8" Cured-in-Place Liner

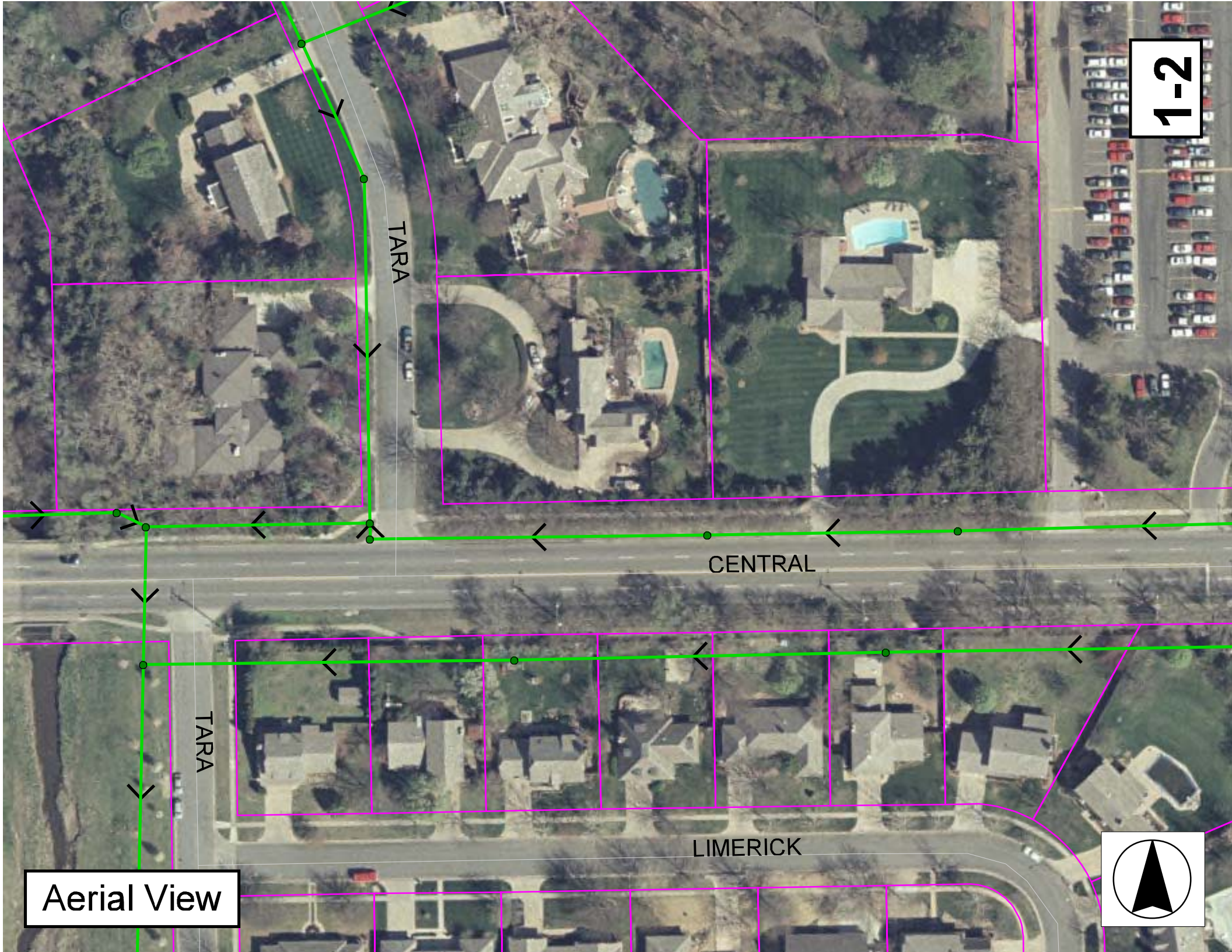
MH # 6048-246
Approx depth = 11.6 ft

MH # 6048-245
Approx depth = 7.3 ft

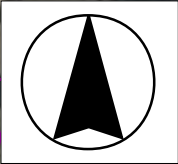
SITE 1



1-2



Aerial View



Television Inspection Master Report

11/24/2003
8:36:08AM

US Manhole: 6048-246
DS Manhole: 6048-245

500 N TARA ST
501 N TARA LA

Date Insp: 8/7/2003

Basin: E03A

Dir Televised: Upstream To Downstream

Pipe Information

Shape:	Round	Length Status:		Project No.:	J-168
Dia/Ht Width:	8 0	Material:	VCP	Index:	
Length:	250.6	Slope:	1.147	Surface:	
Pipe Sec Length:		Comment:			

Inspection Information

Crew:	692	Percent Full:	10	Tape ID:	4017
Weather:	Sunny	Purpose:	TV Existing Line	Counter Start:	49.34
Surface Cond:	Trees	Flow:	Normal Flow	Counter Stop:	
Dyed Test:	No				

Obs. #	VTR Counter Comment	Dist	Location	Description	Rating	Obsrvd (gpm)	Est. (gpm)	Ratings Struct	Clean	Remain (gpm)
1		0.0	US Manhole 6048-246							0.000
2		4.0	Crown	Broken Pipe	2		0.008	44	0	0.008
3		18.0	Invert	Broken Pipe	3		0.010	60	0	0.010
4		72.0	Invert	Broken Pipe	3		0.010	60	0	0.010
5		76.0	Crown	Broken Pipe	3		0.010	60	0	0.010
6		82.0	Invert	Broken Pipe	3		0.010	60	0	0.010
7		112.0	Quad 1 / U-Rt	Crack-Radial	3		0.004	5	0	0.004
8		121.0	Quad 2 / L-Rt	Crack-Radial	3		0.004	5	0	0.004
9		131.0	Invert	Broken Pipe	3		0.010	60	0	0.010
10		136.0	Quad 2 / L-Rt	Crack-Radial	3		0.004	5	0	0.004
11		137.0	North	Break-In Conn	1		0.001	0	0	0.001
12	LIVE CONNECTION-----500 N TARA	142.0	North SO	Wye Service	1		0.000	0	0	0.000
13		148.0	Crown	Broken Pipe	3		0.010	60	0	0.010
14		168.0	Quad 3 / L-Lt	Broken Pipe	3		0.010	60	0	0.010
15		190.0	Crown	Broken Pipe	5		0.060	100	0	0.060
TILE MISSING / ONE TO TWO FEET OF PIPE IS MISSING FROM THE NORTH SIDE OF THE PIPE / INVERT SEEMS TO BE INTACT / CONTRACTOR SHOULD REVIEW THE PRE-INSTALLATION VIDEO AND TAKE CARE WHEN LINING THROUGH THIS AREA										
16		197.0	Quad 2 / L-Rt	Crack-Radial	3		0.004	5	0	0.004
17		247.0	DS Manhole 6048-245							0.000