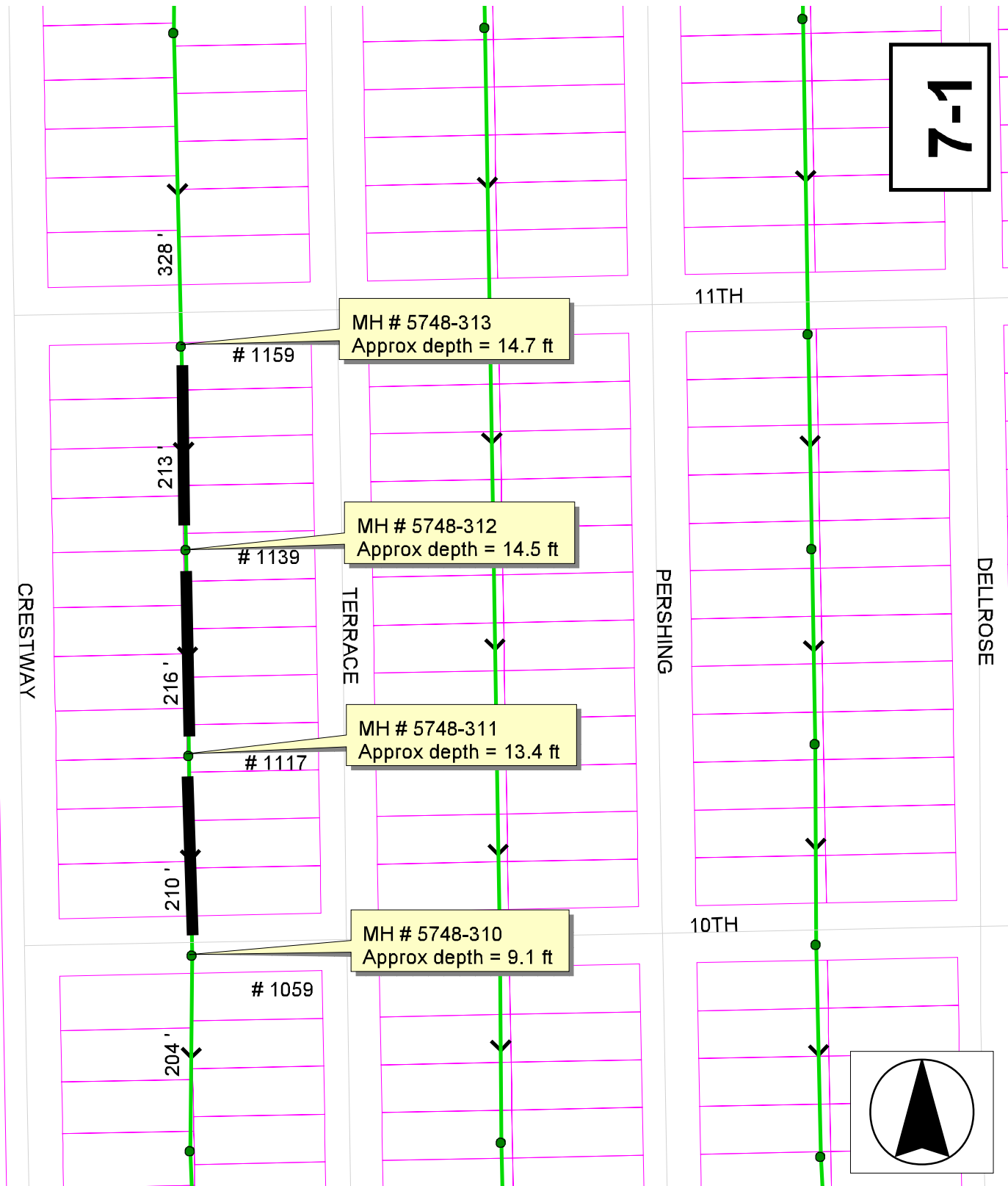
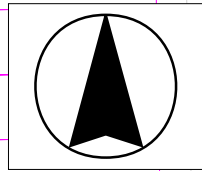


Install 639 lf of 8" Cured-in-Place Liner
from MH 5748-313 to MH 5748-310

SITE 7



7-1



7-2

11TH

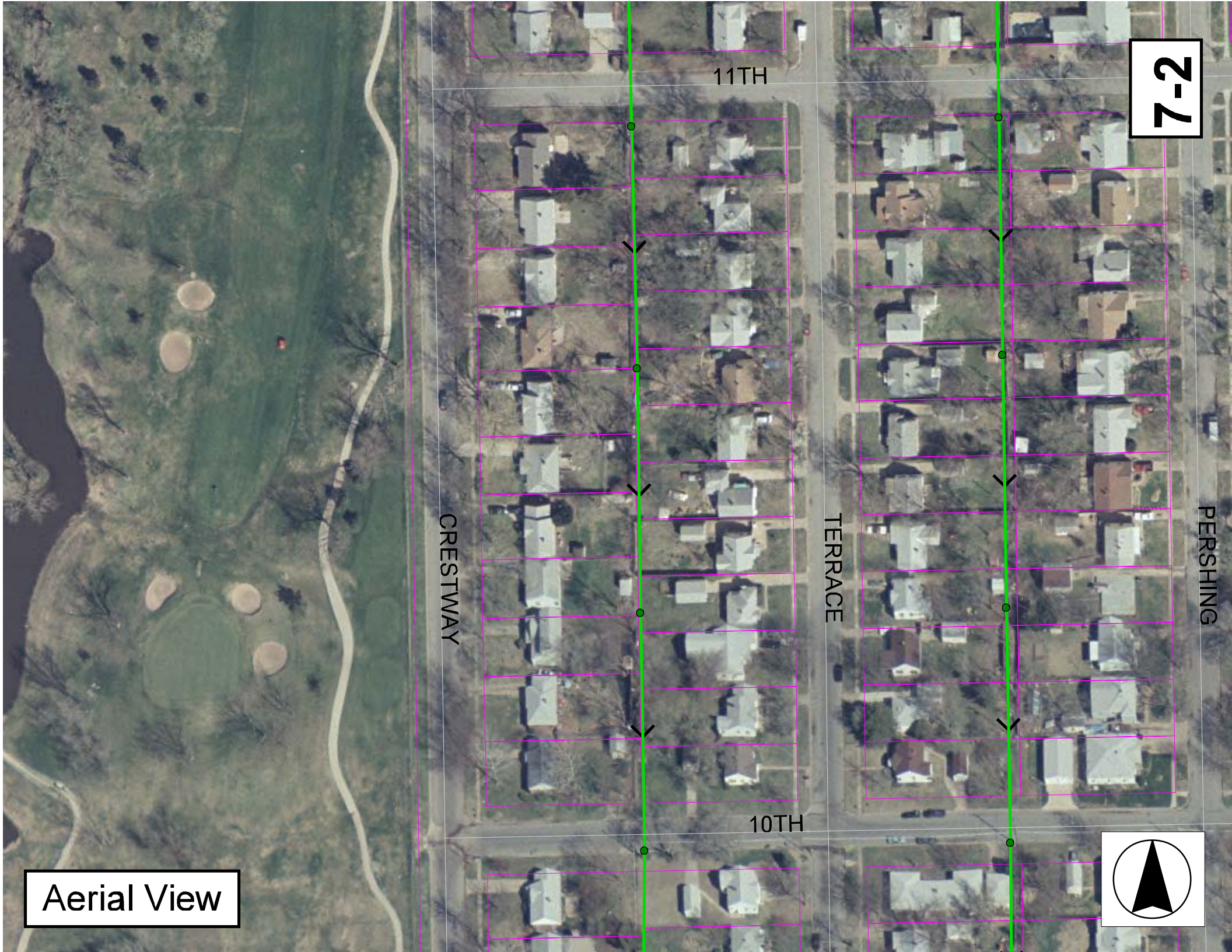
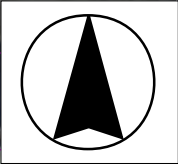
10TH

CRESTWAY

TERRACE

PERSHING

Aerial View



Television Inspection Master Report

12/2/2003
3:14:05PM

US Manhole: 5748-313
DS Manhole: 5748-312

1159 TERRACE ST
1139 TERRACE ST

Date Insp: 4/21/2003
Dir Televised: Upstream To Downstream

Basin: E041

Pipe Information

Shape:	Round	Length Status:	Project No.:	E-072
Dia/Ht Width:	8 0	Material:	VCP	Index:
Length:	212.6	Slope:	0.099	Surface:
Pipe Sec Length:	Comment:			

Obs. #	VTR Counter	Dist	Location	Description	Rating	Obsrvd (gpm)	Est. (gpm)	Ratings Struct	Clean	Remain (gpm)
	Comment									
1		0.0	US Manhole 5748-313							
2		7.0	Crown	Grease	5		0.000	0	25	0.000
3		11.0	Joint	Roots	2		0.004	2	4	0.004
4		16.0	West	Wye Service	5		0.000	400	0	0.000
			1158 N. CRESTWAY (full of roots)							
5		19.0	East	Wye Service	5		0.000	400	0	0.000
			1159 N. TERRACE (full of roots)							
6		29.0	Joint	Roots	3		0.008	5	8	0.008
7		41.0	Joint	Roots	3		0.008	5	8	0.008
8		46.0	East	Wye Service	5		0.000	400	0	0.000
			1159 N. TERRACE (full of roots)							
9		57.0	Joint	Roots	2		0.004	2	4	0.004
10		59.0	Joint	Roots	3		0.008	5	8	0.008
11		68.0	West	Pipe Seal (means the wye is sealed off)						
12		70.0	East	Pipe Seal	3		0.000	0	0	0.000
13		75.0	Joint	Roots	2		0.004	2	4	0.004
14		91.0	West	Wye Service	1		0.000	0	0	0.000
			1152 N. CRESTWAY							
15		91.0	Crown	Crack-Horizontal	3		0.004	5	0	0.004
16		93.0	Quad 4 / U-Lt	Crack-Horizontal	3		0.004	5	0	0.004
17		94.0	East	Wye Service	3		0.000	2	0	0.000
			1149 N. TERRACE (some roots inside)							
18		96.0	Joint	Roots	2		0.004	2	4	0.004
19		115.0	Crown	Crack-Horizontal	3		0.004	5	0	0.004
20		116.0	West	Wye Service	3		0.000	2	0	0.000
			1148 N. CRESTWAY (full of roots)							
21		117.0	Crown	Crack-Horizontal	3		0.004	5	0	0.004
22		119.0	East	Wye Service	3		0.000	2	0	0.000
			1149 N. TERRACE (full of roots)							
23		120.0	Crown	Crack-Horizontal	3		0.004	5	0	0.004
24		129.0	Invert	Sag						0.000
			30% FLOW							
25		143.0	West	Wye Service	1		0.000	0	0	0.000
			1143 N. CRESTWAY							
26		146.0	East	Wye Service	3		0.000	2	0	0.000
			1143 N. TERRACE							
27		167.0	Invert	Sag						
			OUT OF SAG							
28		167.0	West	Pipe Seal	3		0.000	0	0	0.000
29		170.0	East	Wye Service	3		0.000	2	0	0.000
			1143 N. TERRACE							
30		175.0	Joint	Roots	3		0.008	5	8	0.008
31		192.0	West	Wye Service	1		0.000	0	0	0.000
			1140 N. CRESTWAY							
32		195.0	East	Pipe Seal	1		0.000	0	0	0.000
33		213.0	DS Manhole							0.000

7-3

Television Inspection Master Report

12/2/2003
3:14:05PM

US Manhole: 5748-312
DS Manhole: 5748-311

1139 TERRACE ST
1117 N TERRACE ST

Date Insp: 4/21/2003
Dir Televised: Upstream To Downstream

Basin: E041

Pipe Information

Shape:	Round	Length Status:	Project No.:	E-072
Dia/Ht	Width: 8 0	Material:	VCP	Index:
Length:	215.6	Slope:	0.097	Surface:
Pipe Sec Length:	Comment:			

Inspection Information

Crew:	694	Percent Full:	15	Tape ID:	V-3888
Weather:	Sunny	Purpose:	TV Existing Line	Counter Start:	20:33
Surface Cond:	Trees & Fences	Flow:	Normal Flow	Counter Stop:	
Dyed Test:	No				

Obs. #	VTR Counter	Dist	Location	Description	Rating	Obsrvd (gpm)	Est. (gpm)	Ratings		
								Struct	Clean	Remain (gpm)
1		0.0	US Manhole 5748-312							
2		6.0	West	Pipe Seal	1		0.000	0	0	0.000
3		10.0	East	Wye Service	3		0.000	2	0	0.000
1139 N. TERRACE										
4		26.0	Joint	Roots	2		0.004	2	4	0.004
5		30.0	West	Pipe Seal	3		0.000	0	0	0.000
6		33.0	East	Pipe Seal	3		0.000	0	0	0.000
7		35.0	Joint	Infiltration	2		0.000	0	0	0.000
8		35.0	Quad 4 / U-Lt	Crack-Horizontal	3		0.004	5	0	0.004
9		38.0	Crown	Crack-Horizontal	3		0.004	5	0	0.004
10		41.0	Crown	Crack-Horizontal	3		0.004	5	0	0.004
11		54.0	West	Wye Service	3		0.000	2	0	0.000
1130 N. CRESTWAY										
12		58.0	East	Pipe Seal	1		0.000	0	0	0.000
13		79.0	West	Pipe Seal	3		0.000	0	0	0.000
14		82.0	East	Wye Service	3		0.000	2	0	0.000
1133 N. TERRACE										
15		103.0	West	Wye Service	1		0.000	0	0	0.000
1124 N. CRESTWAY										
16		106.0	East	Pipe Seal	3		0.000	0	0	0.000
17		130.0	West	Pipe Seal	3		0.000	0	0	0.000
18		133.0	East	Wye Service	3		0.000	2	0	0.000
1129 N. TERRACE										
19		153.0	Quad 1 / U-Rt	Broken Pipe	3		0.010	60	0	0.010
20		155.0	West	Wye Service	1		0.000	0	0	0.000
1118 N. CRESTWAY										
21		157.0	East	Wye Service	4		0.000	60	0	0.000
1123 N. TERRACE										
22		179.0	West	Pipe Seal	3		0.000	0	0	0.000
23		182.0	East	Pipe Seal	3		0.000	0	0	0.000
24		203.0	West	Wye Service	3		0.000	2	0	0.000
1118 N. CRESTWAY										
25		203.0	Crown	Crack-Horizontal	3		0.004	5	0	0.004
26		206.0	East	Pipe Seal	3		0.000	0	0	0.000
27		212.0	Invert	Crack-Radial	3		0.004	5	0	0.004
28		216.0	DS Manhole							0.000

Most services have some roots inside

7-4

Television Inspection Master Report

12/2/2003
3:14:05PM

US Manhole: 5748-311
DS Manhole: 5748-310

1117 N TERRACE ST
1059 TERRACE ST

Date Insp: 4/22/2003

Basin: E04I

Dir Televised: Downstream To Upstream

Pipe Information

Shape: Round Length Status: Project No.: E-072
Dia/Ht Width: 8 0 Material: VCP Index:
Length: 209.7 Slope: 0.100 Surface:
Pipe Sec Length: Comment:

Inspection Information

Crew: 694 Percent Full: 15 Tape ID: V-3888
Weather: Sunny Purpose: TV Existing Line Counter Start: 39;21
Surface Cond: Trees & Fences Flow: Normal Flow Counter Stop:
Dyed Test: No

Obs. #	VTR Counter	Dist	Location	Description	Rating	Obsrvd (gpm)	Est. (gpm)	Ratings		
								Struct	Clean	Remain (gpm)
	Comment									
1		0.0	Downstream Manhole	5748-310 / tv against the flow						
2		5.0	Joint	Infiltration	4		0.000	0	0	0.000
3		50.0	East	Pipe Seal	3		0.000	0	0	0.000
4		53.0	West	Wye Service	3		0.000	2	0	0.000
			1102 N. CRESTWAY / some roots inside							
5		54.0	Crown	Crack-Horizontal	3		0.004	5	0	0.004
6		59.0	Quad 2 / L-Rt	Crack-Horizontal	3		0.004	5	0	0.004
7		62.0	Quad 1 / U-Rt	Crack-Horizontal	3		0.004	5	0	0.004
8		65.0	Crown	Crack-Horizontal	3		0.004	5	0	0.004
9		67.0	Crown	Broken Pipe	3		0.010	60	0	0.010
10		67.0	Crown	Infiltration	3		0.000	0	0	0.000
11		68.0	East	Break-In Conn	3		0.004	2	0	0.004
			1101 N. TERRACE							
12		68.0	Crown	Crack-Horizontal	3		0.004	5	0	0.004
13		70.0	Crown	Infiltration	3		0.000	0	0	0.000
14		71.0	West	Pipe Seal	3		0.000	0	0	0.000
15		95.0	East	Pipe Seal	1		0.000	0	0	0.000
16		98.0	West	Wye Service	1		0.000	0	0	0.000
			1108 N. CRESTWAY							
17		101.0	Crown	Crack-Horizontal	3		0.004	5	0	0.004
18		104.0	Crown	Crack-Horizontal	3		0.004	5	0	0.004
19		107.0	Crown	Crack-Horizontal	3		0.004	5	0	0.004
20		110.0	Crown	Crack-Horizontal	3		0.004	5	0	0.004
21		113.0	Quad 1 / U-Rt	Broken Pipe	3		0.010	60	0	0.010
22		116.0	Crown	Broken Pipe	3		0.010	60	0	0.010
23		118.0	Crown	Broken Pipe	4		0.030	78	0	0.030
24		119.0	East	Wye Service	1		0.000	0	0	0.000
			1107 N. TERRACE							
25		122.0	West	Pipe Seal	1		0.000	0	0	0.000
26		130.0	Crown	Crack-Horizontal	3		0.004	5	0	0.004
27		137.0	Joint	Roots	3		0.008	5	8	0.008
28		138.0	Quad 1 / U-Rt	Broken Pipe	3		0.010	60	0	0.010
29		143.0	East	Pipe Seal	3		0.000	0	0	0.000
30		146.0	West	Pipe Seal	3		0.000	0	0	0.000
31		149.0	Joint	Roots	2		0.004	2	4	0.004
32		149.0	Quad 1 / U-Rt	Crack-Horizontal	3		0.004	5	0	0.004
33		152.0	Joint	Roots	4		0.010	10	25	0.010
34		158.0	Crown	Crack-Horizontal	3		0.004	5	0	0.004

7-5

Television Inspection Master Report

12/2/2003
3:14:05PM

US Manhole:	5748-311	1117 N TERRACE ST	Date Insp:	4/22/2003	Basin:	E04I		
DS Manhole:	5748-310	1059 TERRACE ST						
35	158.0	Joint	Roots	2	0.004	2	4	0.004
36	158.0	Crown	Infiltration	3	0.000	0	0	0.000
37	158.0	Quad 4 / U-Lt	Crack-Horizontal	3	0.004	5	0	0.004
38	161.0	Joint	Roots	3	0.008	5	8	0.008
39	161.0	Quad 1 / U-Rt	Broken Pipe	3	0.010	60	0	0.010
40	162.0	Quad 1 / U-Rt	Infiltration	3	0.000	0	0	0.000
41	163.0	Crown	Broken Pipe	5	0.060	100	0	0.060
42	164.0	East	Break-In Conn	5	0.010	400	0	0.010
1111 N. TERRACE / pipe is cracked around the tap								
43	167.0	East	Pipe Seal	3	0.000	0	0	0.000
44	170.0	West	Wye Service	1	0.000	0	0	0.000
1114 N. CRESTWAY								
45	170.0	Joint	Infiltration	3	0.000	0	0	0.000
46	191.0	East	Pipe Seal	3	0.000	0	0	0.000
47	194.0	West	Pipe Seal	3	0.000	0	0	0.000
48	194.0	Crown	Crack-Horizontal	3	0.004	5	0	0.004
49	196.0	East	Break-In Conn	1	0.001	0	0	0.001
1117 N. TERRACE / PVC connection								
50	206.0	Invert	Crack-Radial	3	0.004	5	0	0.004
51	209.0	US Manhole 5748-311						0.000