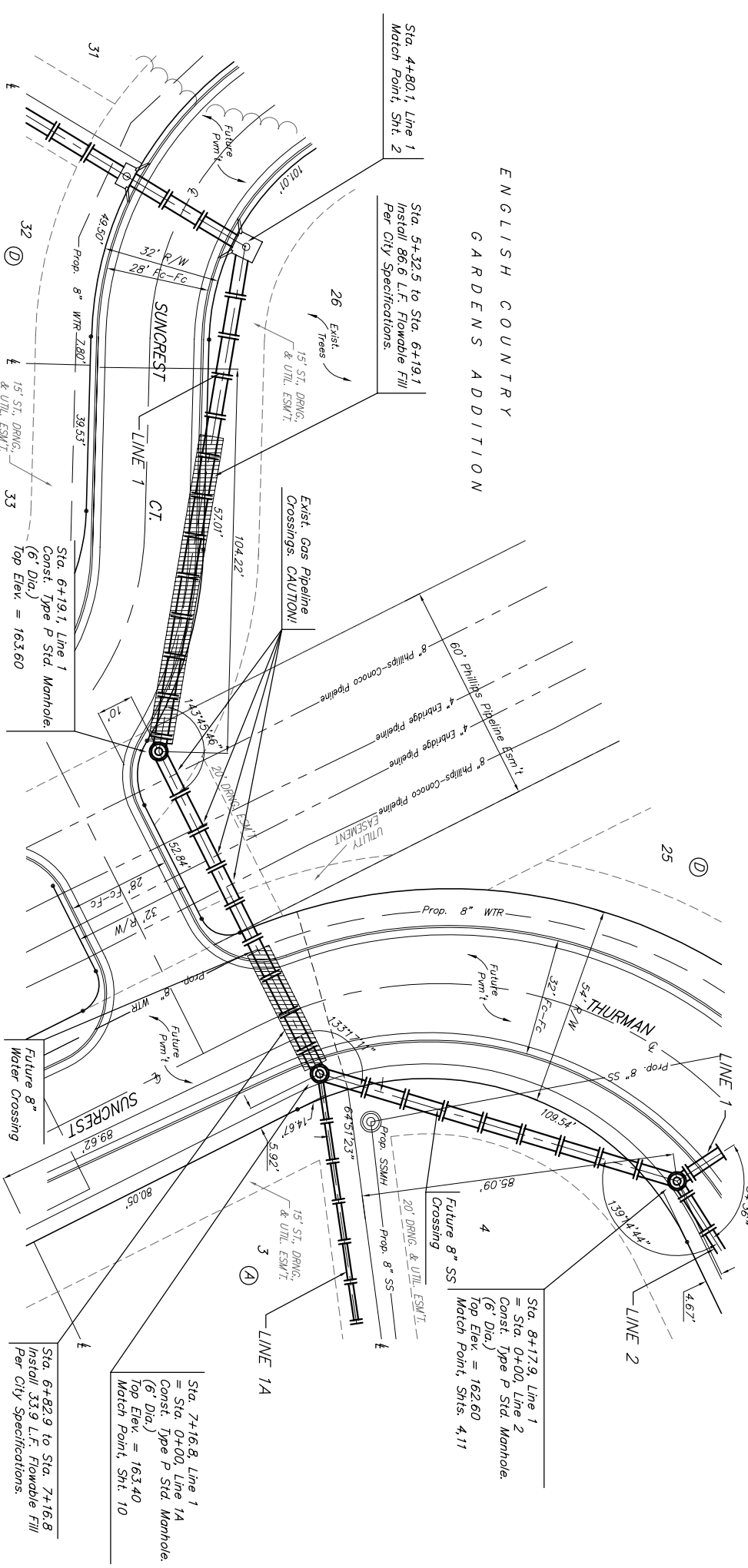


BM#1: "□" Cut top of curb on the southeast top of curb return, 46.66' East and 19.46' South of the intersection of Thurman & Evgreen. Elev = 166.10 (city datum)

BM#2: "□" Cut top of curb on the south side curb line of the north Suncrest Ave. a distance of 97.86' East & 2.17' South of Lot 1, Blk. A, English Country Gardens Addition. Elev = 158.61 (city datum)

Contractor Shall Contact Enbridge Pipeline Prior to Crossing the pipelines. Scott Heam @ 316-772-2980 (M) or Joe Fowler @ 316-706-7477 (M).  
Contractor Shall Contact Phillips-Conoco Pipeline Prior to Crossing their pipelines. Mike Martin 580-767-5469 (Office) 580-716-4582 (M)



Scale: 1" = 20' Horizontal  
1" = 5' Vertical  
• = Iron

140	4+80.1	152.84 = Flow Out 152.94 = Flow In	Sta. 4+80.1, Line 1 Match Point, Sht. 2
145	5+100	152.96 = Flow	
150	5+50	153.01 = Flow	
155	6+00	153.06 = Flow	
160	6+19.1	153.08 = Flow Out 153.18 = Flow In	Sta. 6+19.1, Line 1 Const. Type P Std. Manhole. (6" Dia.) Top Elev. = 163.60
	6+50	153.21 = Flow	
	7+00	153.26 = Flow	
	7+16.8	153.28 = Flow Out 153.38 = Flow In (42°NW) 155.69 = Flow In (15°NW)	Sta. 7+16.8, Line 1 = Sta. 0+00, Line 1A Const. Type P Std. Manhole. (6" Dia.) Top Elev. = 163.40 Match Point, Sht. 10
	7+50	153.42 = Flow	
	8+00	153.48 = Flow	
	8+17.9	153.50 = Flow Out 154.00 = Flow In (36°SW) 153.92 = Flow In (30°NW)	Sta. 8+17.9, Line 1 = Sta. 0+00, Line 2 Const. Type P Std. Manhole. (6" Dia.) Top Elev. = 162.60 Match Point, Shts. 4, 11

ENGLISH COUNTRY GARDENS ADDITION  
**LINE 1**  
STORM WATER DRAIN IMPROVEMENTS

**BAUGHMAN COMPANY P.A.**  
ENGINEERING, SURVEYING, & PLANNING

PROJECT NUMBER: 316-262-7271 • 319 ELLIS • WICHITA, KANSAS 67211  
SHEET: 3 OF 31  
DATE: 02/04/04  
SCALE: NOTED