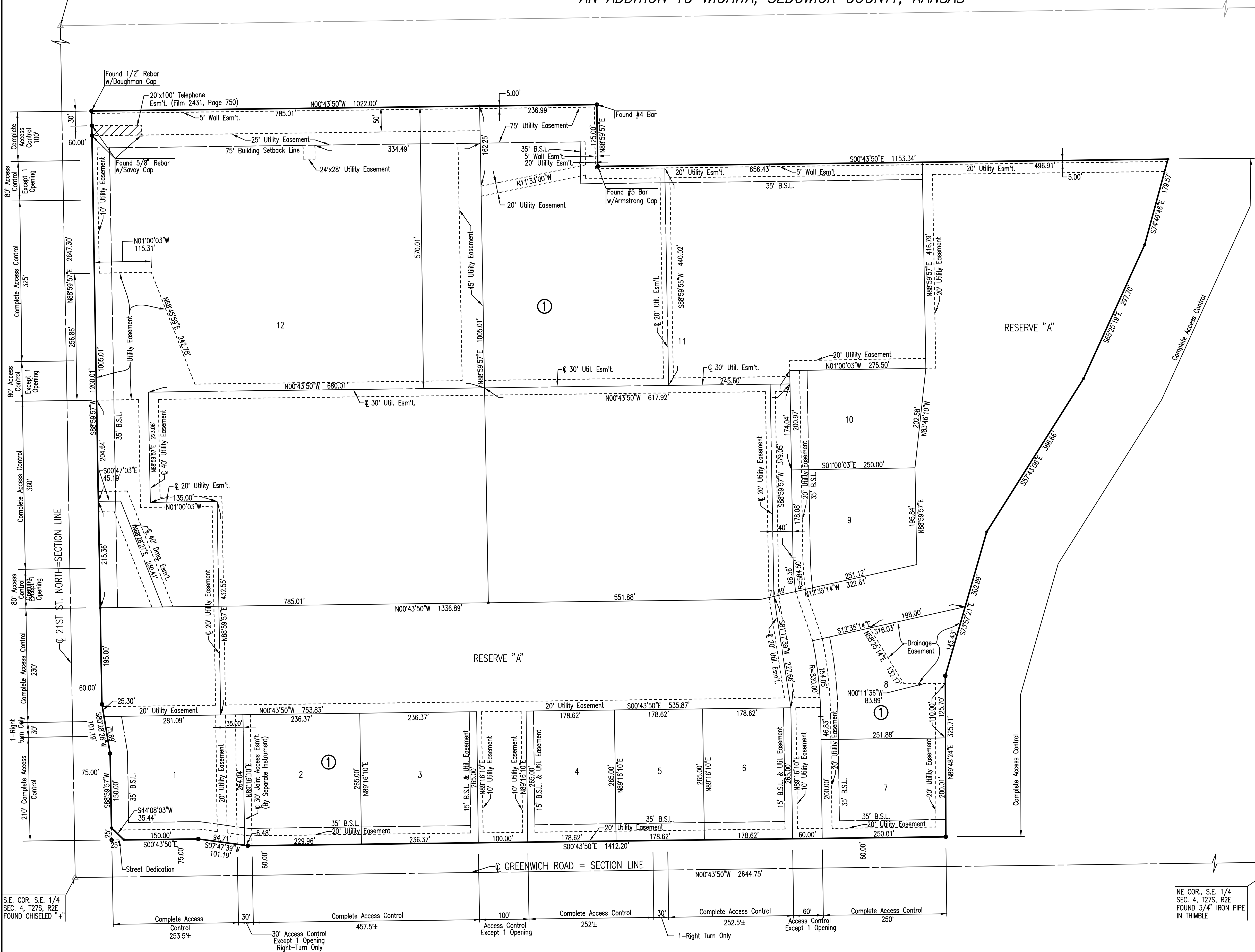


REGENCY LAKES COMMERCIAL 2ND ADDITION

AN ADDITION TO WICHITA, SEDGWICK COUNTY, KANSAS

N.W. COR. S.E. 1/4
SEC. 4, T27S, R2E

S.W. COR. SE 1/4
SEC. 4, T27S, R2E
FOUND. 1/2" REBAR
WITH MKEC CAP



SCALE: 1"=100'

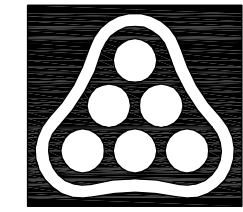
- = FOUND #5 BAR W/MKEC CAP (UNLESS OTHERWISE NOTED)
- = SET 1/2" REBAR W/ FEG CAP (UNLESS OTHERWISE NOTED)

K-96 HIGHWAY

DSNR: BER OPER: CSI SCALE: 1"=100.00
Q:\2004\04106\PLAT 03-01-2004 04:06:45 pm

S.E. COR. S.E. 1/4
SEC. 4, T27S, R2E
FOUND 3/4" IRON PIPE
IN THIMBLE

N.E. COR., S.E. 1/4
SEC. 4, T27S, R2E
FOUND 3/4" IRON PIPE
IN THIMBLE



No.	Revision	By	Date

CITY OF WICHITA, KANSAS
JAMES L. ARMOUR, P.E. - ACTING CITY ENGINEER
STORM WATER DRAIN #225

PLAT

CITY OF WICHITA PROJECT NO. 468-83775

Professional Engineering Consultants, P.A.
303 S. TOPEKA - WICHITA, KANSAS 67202
316-262-2691 • FAX 316-262-3003

Designed by	BER, RAS	Job No.	32-04106-042
Drawn by		Date	FEBRUARY 2004

SHT. 5 of 31