

# FINAL PLAT

## KRUG SOUTH ADDITION

### AN ADDITION TO WICHITA, SEDGWICK COUNTY, KANSAS

LINE	LENGTH	BEARING
L1	218.52'	N12°28'30"W
L2	107.16	N12°28'30"W
L3	130.23'	N07°28'42"W
L4	159.23'	S39°07'41"W
L5	40.00'	N80°18'03"E
L6	80.00'	N33°05'39"E
L7	40.37'	N13°28'00"E
L8	27.99'	N71°45'50"E
L9	20.41'	N07°32'55"W
L10	72.63'	S63°19'03"W
L11	93.04'	S21°07'37"W
L12	23.42'	S86°19'48"E
L13	41.15'	N77°41'34"E
L14	59.42'	N49°35'40"E
L15	40.00'	N30°39'25"E
L16	91.60'	N17°48'12"E
L17	178.55'	S55°32'53"W

LOTS (inclusive)	BLOCK	ELEVATION NGVD
27 - 32	2	1360.9
40 & 41	2	1360.9
33 - 39	2	1361.7
52 - 58	2	1347.7
59	2	1348.0
60	2	1348.4
61	2	1348.9
62	2	1349.9
63	2	1350.7
64	2	1352.5
66 & 65	2	1354.2
68 - 72	2	1355.8

**LEGEND**  
Date of Survey: September, 2007

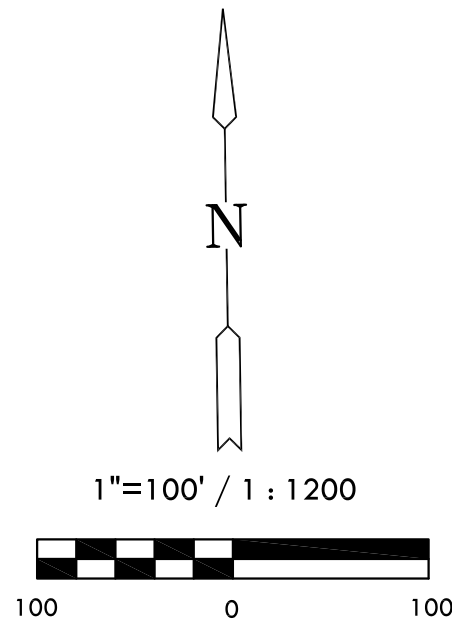
- △ = Section Corner Monument Found
- ⊙ = Found 3/8" Rebar w/ MKEC CLS 39 id. cap
- = Set 3/8" Rebar w/ MKEC CLS 39 id. cap
- = Found 1/2" Rebar w/ Baughman Id. cap
- (M) = Measured
- (CM) = Calculated from measured
- (P) = Platted
- (D) = Deeded or Described

**BENCH MARKS**

Datum BM #1: "I" at NE corner of inlet on S. side of Williamsgate over bridge in Hawthorne Addition. Elev. = 1355.74 (NGVD 29)

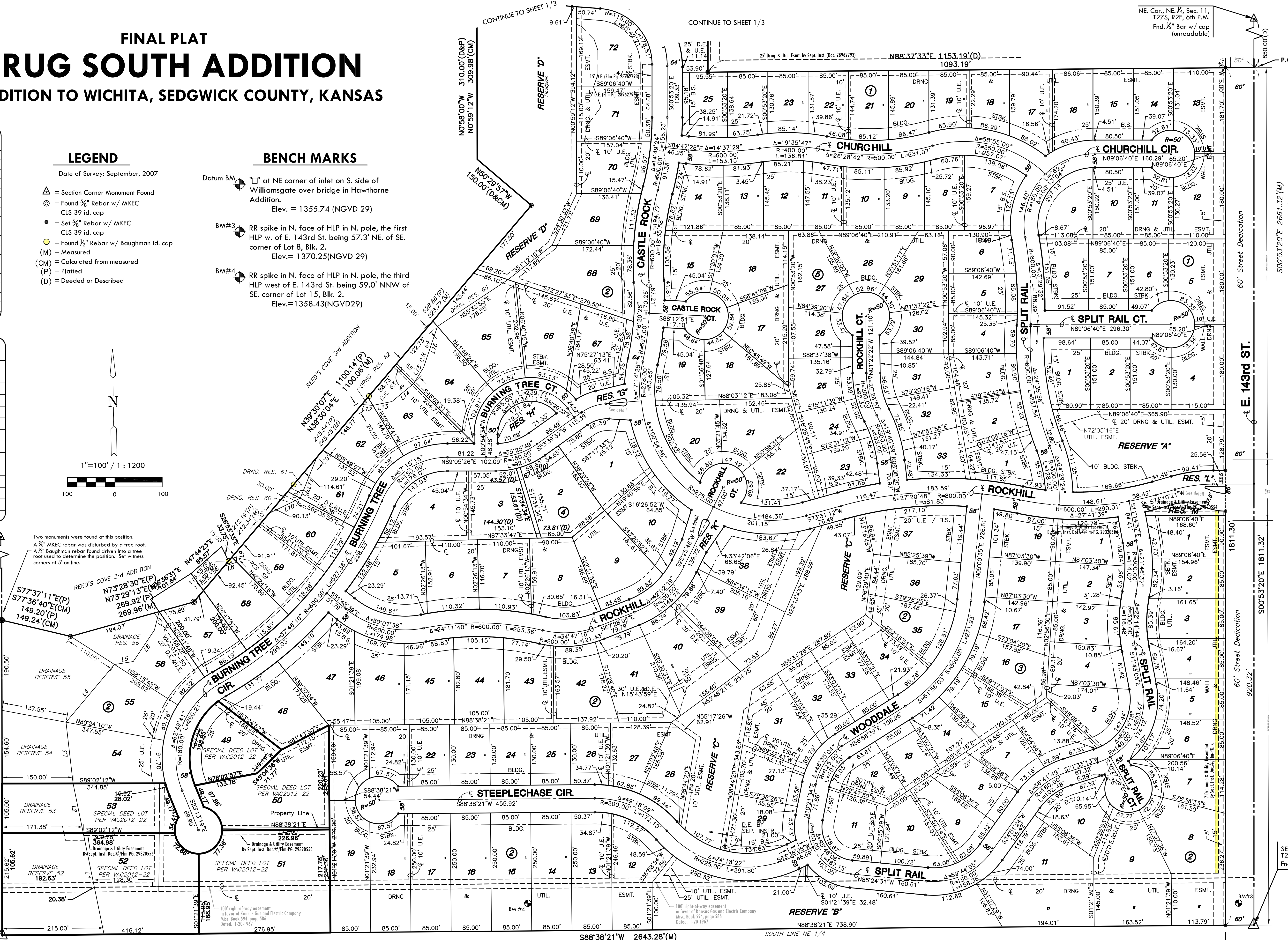
BM#3: RR spike in N. face of HLP in N. pole, the first HLP w. of E. 143rd St. being 57.3' NE. of SE. corner of Lot 8, Blk. 2. Elev. = 1370.25(NGVD 29)

BM#4: RR spike in N. face of HLP in N. pole, the third HLP west of E. 143rd St. being 59.0' NNW of SE. corner of Lot 15, Blk. 2. Elev. = 1358.43(NGVD 29)



NW. Cor., NE 1/4, Sec. 11, T27S, R2E, 6th P.M.  
Fnd. 3/4" Pipe

SW. Cor., NE 1/4, Sec. 11, T27S, R2E, 6th P.M.  
Fnd. nail in stone



SE. Cor., NE 1/4, Sec. 11, T27S, R2E, 6th P.M.  
Fnd. 1/2" Bar w/ PEC cap



411 N. WEBB ROAD  
WICHITA, KS. 67206  
316-684-9600