

SANITARY SEWER LATERAL 100, MAIN 1 SOUTHWEST INTERCEPTOR SEWER

PROJECT NO. 468-84947

THE CITY OF WICHITA, KANSAS
GARY JANZEN, P.E. - CITY ENGINEER

OCA NO. 744366

GENERAL NOTES

- UNLESS SHOWN OR STATED OTHERWISE ON THESE DRAWINGS, MATERIALS AND CONSTRUCTION SHALL BE IN ACCORDANCE WITH CITY OF WICHITA STANDARD SPECIFICATIONS AND SPECIAL PROVISIONS.
- CONTRACTOR WILL BE REQUIRED TO PROVIDE A MINIMUM ADVANCE NOTICE OF SEVENTY-TWO (72) HOURS TO UTILITY COMPANIES PRIOR TO STARTING ANY EXCAVATION AS FOLLOWS:

KANSAS ONE-CALL 1-800-344-7233
or 687-2470 (LOCAL WICHITA)

THE CONTRACTOR MUST NOTIFY THE FOLLOWING IN CASE OF AN EMERGENCY:

AT&T (TELEPHONE)	800-870-8390
COX COMMUNICATIONS (CABLE)	262-0661
KANSAS GAS SERVICE (GAS)	888-424-4950
C.O.W. PUBLIC WORKS & UTILITIES	262-6000
WESTAR (ELECTRIC)	383-8600
BLACK HILLS ENERGY (GAS)	800-303-0357

- THE CONTRACTOR SHALL BE RESPONSIBLE FOR PRESERVING PROPERTY IRONS. THE CONTRACTOR WILL BE REQUIRED TO RE-ESTABLISH ANY PROPERTY IRONS WHICH ARE DAMAGED OR DESTROYED BY HIS CONSTRUCTION OPERATIONS. SUCH IRONS SHALL BE RE-ESTABLISHED BY A LICENSED LAND SURVEYOR IN ACCORDANCE WITH STATE LAWS.
- EXISTING UTILITIES AND THEIR LOCATIONS, AS SHOWN ON THE PLANS REPRESENT THE BEST INFORMATION OBTAINABLE FOR DESIGN. LOCATION INFORMATION HAS BEEN OBTAINED FROM THE VARIOUS UTILITY COMPANIES AND IS EITHER FROM COMPANY RECORD DRAWINGS OR COMPANY PROVIDED FIELD LOCATIONS. THE PLAN LOCATIONS SHOWN ARE NOT GUARANTEED. ADDITIONAL EXISTING UTILITIES MAY ALSO BE ENCOUNTERED.

- RUBBLE FROM THE REMOVAL OF MISCELLANEOUS STRUCTURES AND EXCESS EXCAVATION WHICH IS TO BE WASTED SHALL BE DISPOSED OF ON SITES TO BE PROVIDED BY THE CONTRACTOR. THESE SITES SHALL BE APPROVED BY THE ENGINEER AS TO SUITABILITY, APPEARANCE AND SITE LOCATION. LOCATIONS THAT, IN THE OPINION OF THE ENGINEER, WILL LEAVE AN UNSIGHTLY APPEARANCE WILL NOT BE APPROVED. ALL DISPOSAL SITES MUST BE APPROVED BY THE KANSAS DEPARTMENT OF HEALTH AND ENVIRONMENT. MATERIAL EITHER STOCKPILED OR DISPOSED OF IN A FLOOD PLAIN WOULD REQUIRE A KANSAS STATE BOARD OF AGRICULTURE PERMIT. ANY MATERIAL DUMPED IN WATERS OF THE UNITED STATES OR WETLANDS IS SUBJECT TO U.S. CORPS OF ENGINEERS PERMITTING REGULATIONS. ANY MATERIAL BURIED OR STOCKPILED BEYOND APPROVED CONSTRUCTION LIMITS WOULD REQUIRE ADDITIONAL ARCHAEOLOGICAL INVESTIGATIONS UNLESS BURIED IN A PREVIOUSLY APPROVED BORROW LOCATION.

- COST OF EXCAVATION, HAULING, AND DUMPING OF EXCESS EXCAVATION SHALL BE SUBSIDIARY TO THE PROJECT.
- A PORTION OF EXCESS EXCAVATED MATERIAL SHALL BE MOUNDING AROUND MANHOLES WHICH EXTEND MORE THAN ONE (1) FOOT ABOVE THE EXISTING GROUND. SUCH MOUNDS SHALL BE CONSTRUCTED WITH A SIX (6) FOOT DIAMETER FLAT TOP WITH 4 TO 1 SIDE SLOPES DOWN TO THE ORIGINAL GROUND. THE ELEVATION OF THE FLAT TOP OF THE MOUND SHALL BE 0.4 FOOT BELOW THE TOP OF THE MANHOLE.
- ALL STUBS AND PLUGGED PIPES SHALL BE LOCATED WITH GREEN PLASTIC TAPE IN THE SAME MANNER AS RISERS.

- CONNECTING TO EXISTING MANHOLES, PRIOR TO LAYING SEWER LINES USING EXISTING STUBS IN EXISTING MANHOLES, THE CONTRACTOR SHALL EXPOSE AND VERIFY THE ELEVATION, GRADE AND ALIGNMENT OF EXISTING STUBS AND NOTIFY THE ENGINEER OF ANY DEVIATION FROM THE PLAN. WHERE CONNECTION TO AN EXISTING MANHOLE THAT DOES NOT HAVE AN EXISTING STUB OR THE STUB IS UNUSABLE DUE TO ELEVATION GRADE OR ALIGNMENT, THE CONTRACTOR SHALL BORE CUT INTO EXISTING MANHOLE WALL TO MAKE CONNECTION USING APPROVED WATER STOP GASKET, AND RESHAPE THE EXISTING MANHOLE INVERT TO PROVIDE SMOOTH FLOW. THE COST OF CONNECTING TO EXISTING MANHOLES IS INCIDENTAL TO THE PROJECT.

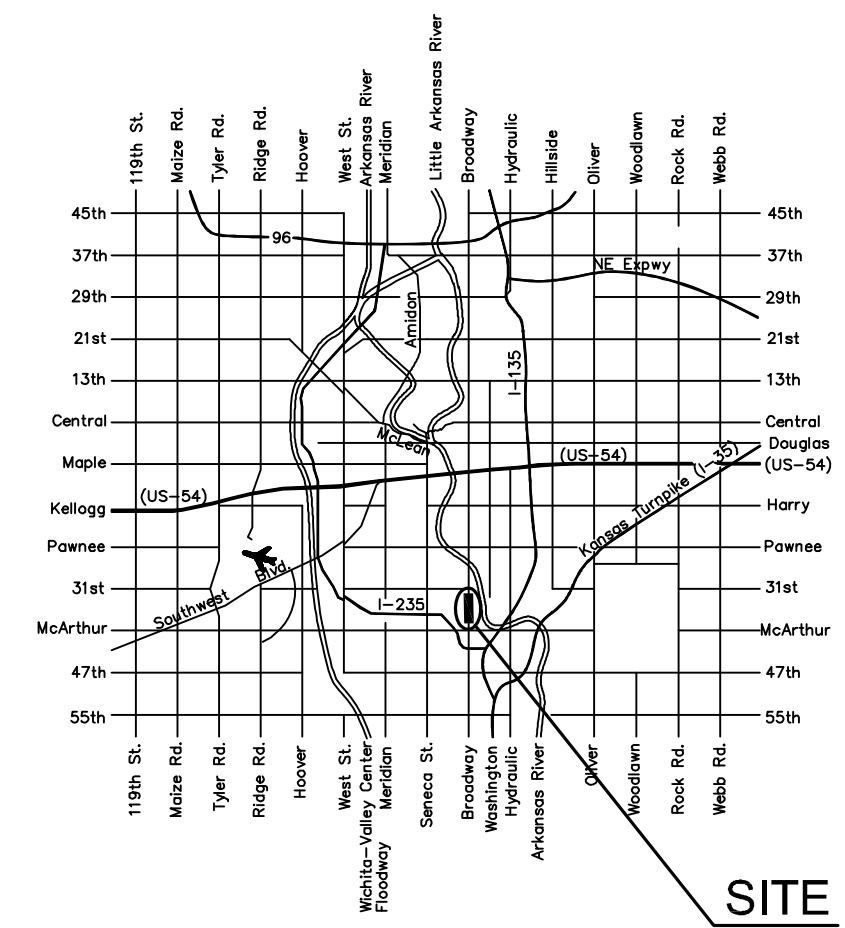
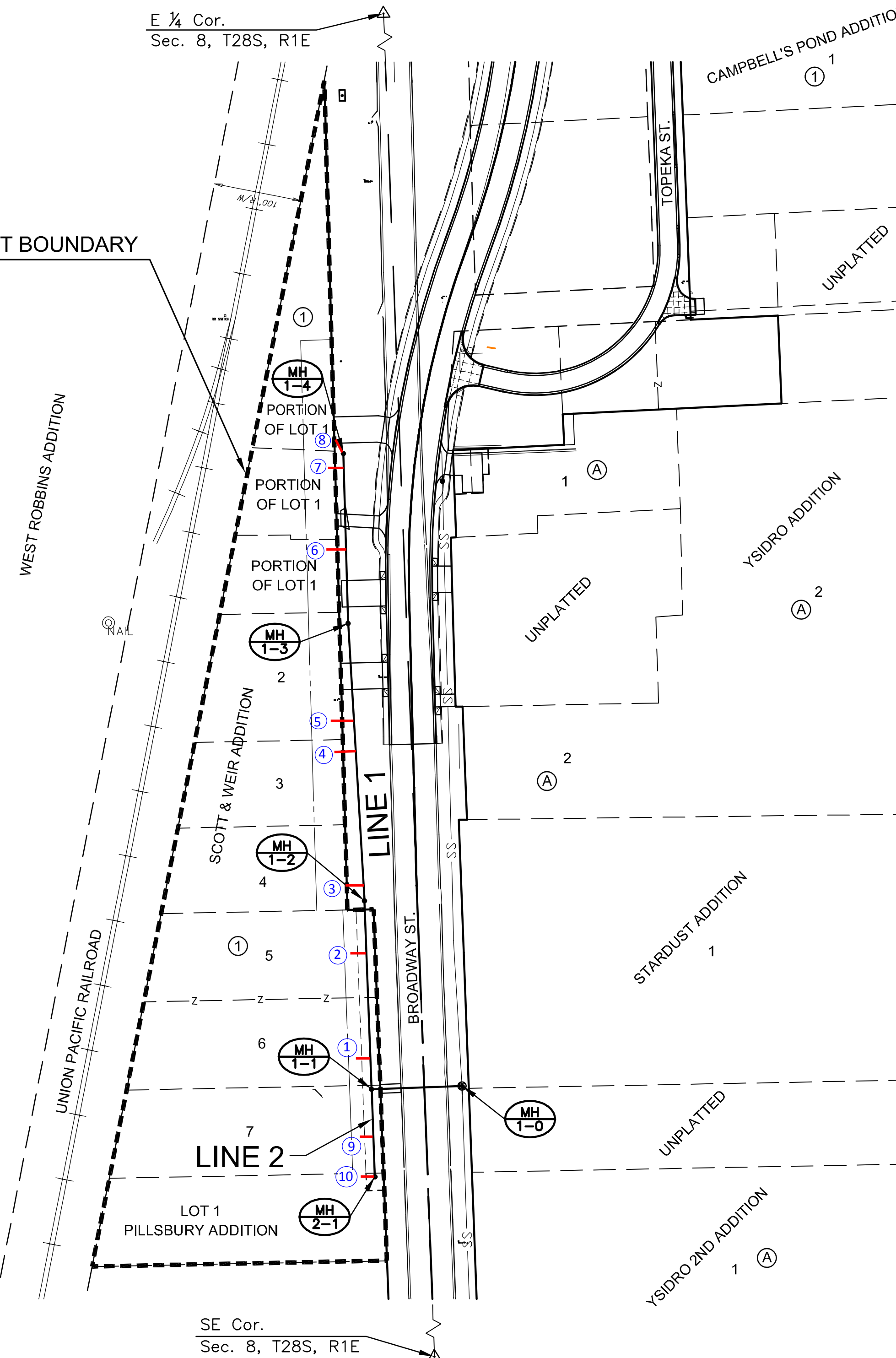
- TREES AND SHRUBS IN PUBLIC RIGHT-OF-WAY WHICH ARE IN DIRECT CONFLICT WITH PROPOSED NEW CONSTRUCTION SHALL BE REMOVED BY THE CONTRACTOR WITH THE ENGINEER'S APPROVAL. TREES AND SHRUBS WHICH ARE NOT IN DIRECT CONFLICT WITH PROPOSED NEW CONSTRUCTION SHALL BE SAVED AND PROTECTED FROM DAMAGE.

- PORTIONS OF THE WORK ON THIS PROJECT ARE IN PROXIMITY TO EXISTING UNDERGROUND UTILITIES AND ABOVE GROUND UTILITY APPURTENANCES, AS WELL AS WITHIN DEVELOPED LOTS WITH FENCES AND GRASS. THE CONTRACTOR SHALL CONTACT EACH AFFECTED UTILITY COMPANY AND SHALL ACCOMMODATE/SUPPORT UTILITY FACILITIES AS REQUIRED AND RE-ESTABLISH GRASSED AREA DISTURBED BY CONSTRUCTION WITH THE SAME TYPE OF VEGETATION CURRENTLY ESTABLISHED. THE COST OF UTILITY ACCOMMODATION SHALL NOT BE A PAY ITEM, BUT WILL BE CONSIDERED SUBSIDIARY TO THE COST OF INSTALLING SANITARY SEWER PIPE. THE COST OF REMOVAL AND REPLACEMENT OF EXISTING FENCES AND VEGETATION SHALL NOT BE A PAY ITEM, BUT WILL BE CONSIDERED SUBSIDIARY TO THE COST OF SITE CLEARING AND RESTORATION.

Danco Enterprises - Contractor
G. Baalman - City of Wichita, Field Project Engineer
Z. Regnier - City of Wichita, Inspector
As-built
Risers
Release Date: 10/27/2014
pdf: APRosas 10/31/2014

- ALL AREAS DISTURBED BY CONSTRUCTION THAT ARE ADJACENT TO DEVELOPED PROPERTIES SHALL BE RESTORED WITH SOD TO MATCH EXISTING TURF TYPE. RESTORATION OF DISTURBED AREAS SHALL INCLUDE, BUT NOT BE LIMITED TO, TOP SOIL PREPARATION AND SODDING. ALL SODDING WORK SHALL BE IN ACCORDANCE WITH CITY STANDARD SPECIFICATIONS AND THE CITY ADMINISTRATIVE REGULATION NO. AR.6.5, WHICH GOVERNS CLEANUP AND RESTORATION OR REPLACEMENT FOLLOWING CONSTRUCTION. THE "RECAPITULATION OF QUANTITIES" SHOWS THE ESTIMATED SQUARE YARDS OF SODDING, WITH A BID ITEM FOR THE SAME. WHEN THE WEATHER / SEASON PREVENTS THE INSTALLATION OF SOD, THE CONTRACTOR SHALL BE RESPONSIBLE FOR INSTALLING EROSION CONTROL BLANKET (CURLX 1, OR APPROVED EQUAL) AT THE BACK OF CURB (8' WIDE MINIMUM). ALL COSTS FOR EROSION MAT INSTALLATION SHALL BE SUBSIDIARY TO "SITE RESTORATION".
- CONTRACTOR SHALL REMOVE AND DELIVER TO 1801 S. MCLEAN ALL MANHOLE FRAMES AND UDS NOTED FOR REMOVAL DURING CONSTRUCTION. ALL ASSOCIATED COSTS TO TRANSPORT THE SALVAGED MATERIAL WILL BE SUBSIDIARY TO THE BID ITEM "SITE RESTORATION".
- A SAW CUT OF AT LEAST ONE-HALF THE DEPTH OF THE EXISTING SURFACE COURSES OR ONE-FOURTH THE DEPTH OF THE EXISTING TOTAL PAVEMENT THICKNESS SHALL BE PROVIDED AT LOCATIONS WHERE PROPOSED CONSTRUCTION ABUTS AN EXISTING SURFACE OR PAVEMENT FOR WHICH PARTIAL REMOVAL OF THAT SURFACE OR PAVEMENT IS REQUIRED. SAW JOINT TO FACILITATE REMOVAL WITHIN THREE (3) FEET OF EXISTING JOINTS WILL NOT BE PERMITTED AND FOR SUCH INSTANCES THE LIMITS OF REMOVAL SHALL EXTEND TO THE EXISTING JOINT.
- A TACK COAT OF EMULSIFIED ASPHALT (SC-1H OR CSS-1H) SHALL BE APPLIED AT AN APPROXIMATE RATE OF 0.05 GAL. PER SQUARE YARD BETWEEN EACH LIFT OF BITUMINOUS MATERIAL.
- ASPHALT USED ON BROADWAY SHALL UTILIZE PG 70-28 OIL AND BM-2 AGGREGATE. ASPHALT USED IN PARKING AREAS SHALL CONFORM TO THE CITY'S SPECIFICATION FOR SC-1 AND BC-1 OR MEET THE SPECIFICATION FOR BROADWAY PAVEMENT.
- ALL FENCES, POSTS AND LANDSCAPING FEATURES IN CONFLICT WITH THE NEW CONSTRUCTION WILL BE RELOCATED BY OTHERS PRIOR TO CONSTRUCTION. UPON THE START OF CONSTRUCTION, ALL ITEMS THAT REMAIN WITHIN THE CONSTRUCTION LIMITS SHALL BE STOCKPILED ON THE ADJACENT PROPERTY BY THE CONTRACTOR UNLESS OTHERWISE NOTED. THIS WORK SHALL BE SUBSIDIARY TO "SITE CLEARING", WITH THE EXCEPTION OF FENCE REMOVAL, WHICH SHALL BE PAID FOR AS "FENCE REMOVED" AND MEASURED BY THE LINEAR FOOT.
- THE CONTRACTOR SHALL COORDINATE EACH DAY'S EXCAVATION WITH THE ENGINEER PRIOR TO BEGINNING EXCAVATION. PEDESTRIAN AND VEHICLE ACCESS SHALL BE MAINTAINED TO ALL BUSINESSES IMPACTED BY CONSTRUCTION AT ALL TIMES. THIS MAY REQUIRE BACKFILLING PORTIONS OF NEWLY INSTALLED SEWER PRIOR TO EXTENDING NEW EXCAVATIONS.
- THIS PROJECT WILL BE CONSTRUCTED CONCURRENTLY WITH THE SOUTH BROADWAY BRIDGE PROJECT (PROJECT NO. 472-84830) CURRENTLY UNDER CONSTRUCTION. THE CONTRACTOR WILL BE RESPONSIBLE FOR COORDINATING CONSTRUCTION EFFORTS WITH THE CONTRACTOR FOR THE BRIDGE PROJECT AND THE PROJECT ENGINEER.

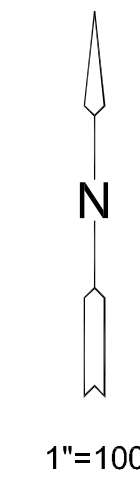
BENEFIT DISTRICT BOUNDARY



VICINITY MAP
No Scale

INDEX TO DRAWINGS

SHEET NO.	DESCRIPTION
1	TITLE SHEET
2-4	SEWER DETAILS
5	LINE 1 & 2
6	EROSION CONTROL & SURFACING PLAN
7	CURB & GUTTER DETAILS
8	SUMMARY OF QUANTITIES
9-13	BMP SHEETS
14	BUBBLE MAP
15	TRAFFIC CONTROL PLAN
16-21	TRAFFIC CONTROL DETAILS



BENCHMARKS

- BM#7 CHISELED "L" ON CENTER OF SW SIDE CURB INLET, W SIDE OF BROADWAY, 43' S OF SOUTH END OF BRIDGE GUARD RAIL. 489.8' S & 17.5' W OF E 1/4 COR., SEC. 8, T28S, R1E.
ELEV.=1292.99 (NAVD 88)
- BM#9 CHISELED "L" ON SE COR. OF "AFTER DARK VIDEO" SIGN AT 3721 S. BROADWAY, 1145' S & 80.4' W OF E 1/4 COR., SEC. 8, T28S, R1E.
ELEV.=1281.60 (NAVD 88)



SANITARY SEWER PLANS FOR
LATERAL 100, MAIN 1
SOUTHWEST INTERCEPTOR SEWER
 CITY OF WICHITA, KANSAS

©2013 MKEC Engineering All Rights Reserved
www.mkec.com
These drawings and their contents, including, but not limited to, all concepts, designs, & ideas are the exclusive property of MKEC Engineering (MKEC), and may not be used or reproduced in any way without the express consent of MKEC.

TITLE SHEET

PROJECT NO.	468-84947	
DATE	DATE	
SCALE	1" = 100'	
DESIGNED	DRAWN	CHECKED
DMU	DMU	JRA
NO.	REVISION	DATE
SHEET NO.		
1 OF 21		