

PROPOSED ALLEY IMPROVEMENTS FROM 1ST AND 2ND BETWEEN WACO & WICHITA

PROJECT NO. 472-84913

O.C.A. No. : 132723

CITY OF WICHITA, KANSAS

SANITARY SEWER IMPROVEMENTS

PROJECT NO. 468-84691

UTILITY CONTRACTOR LIST

<p>Westar 1900 East Central P.O. Box 208 Wichita, KS 67202 316-261-6251 Contact: Randy Truitt</p>	<p>Stormwater Utility City of Wichita City Hall - 8th Floor 455 North Main Wichita, KS 67202 316-268-4545 Contact: Scott Lindebak</p>
<p>Kansas Gas Service 1021 East 26th Street North P.O. Box 47008 Wichita, KS 67201 316-832-3126 Contact: Jim Coe</p>	<p>Dept. of Water & Sewer City of Wichita City Hall - 8th Floor 455 North Main Wichita, KS 67202 316-268-4555 Contacts: LaDonna Lawrenz (Sewer) Kerry Gibson (Water)</p>
<p>Black Hills Energy 1611 S. Hoover Wichita, KS 67209 316-941-1608 Contact: Calvin Briggs</p>	<p>Traffic Engineering City of Wichita City Hall - 7th Floor 455 North Main Wichita, KS 67202 316-268-4446 Contact: Paul Gunzelman</p>
<p>Cox Communications 701 East Douglas Wichita, KS 67202 316-262-4270 Contact: Bryan Ring</p>	<p>Sedgwick County Emergency Management Agency 535 N. Main, Suite B10 Wichita, KS 67203-3702 316-383-7546 Contact: Jack Kegley</p>
<p>AT&T 154 North Broadway Wichita, KS 67202 316-268-2259 Contact: Jim Taben</p>	
<p>Rural Water District #3 1120 East 111th South Wichita, KS 67110 620-777-0877 Contact: Steve Parker</p>	

INDEX OF SHEETS

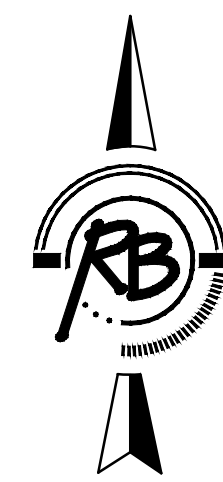
- | | |
|-----|---------------------|
| 1 | TITLE SHEET |
| 2 | GENERAL NOTES |
| 3 | PAVING DETAILS |
| 4-5 | ALLEY PLANS |
| 6 | DRIVE DETAIL |
| 7-8 | REMOVAL PLANS |
| 9 | SANITARY SEWER PLAN |
| 10 | TYPE P MH DETAIL |
| 11 | SEWER RISER DETAIL |
| 12 | STORM SEWER PLAN |
| 13 | DROP INLET DETAIL |

BENCHMARK

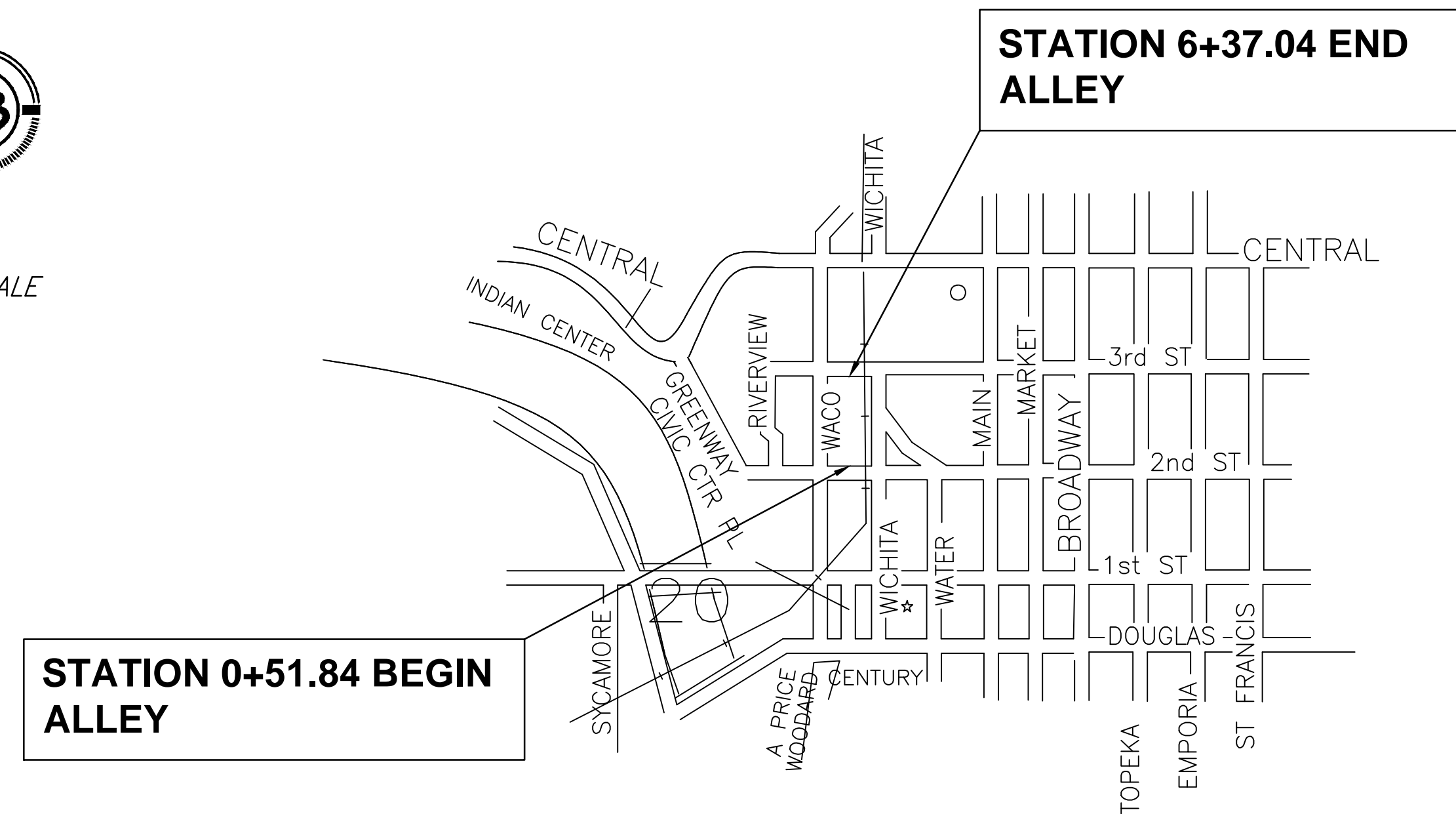
"□" on Sidewalk 2' East and 1' South of SW Property Line of Cargill Lot.

ELEV (NAVD88) = 1302.00

CORNEJO & SONS/WB CARTER - CONTRACTORS
J TERHUNE - CITY OF WICHITA, FIELD PROJ. ENGINEER
M. COYKENDALL/ J. DeCICCO - CITY OF WICHITA, INSPECTOR
AS-BUILT
RELEASE DATE: 04/20/2011
PDF: A. P. ROSAS 05/19/2011



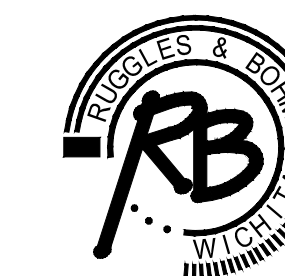
NO SCALE



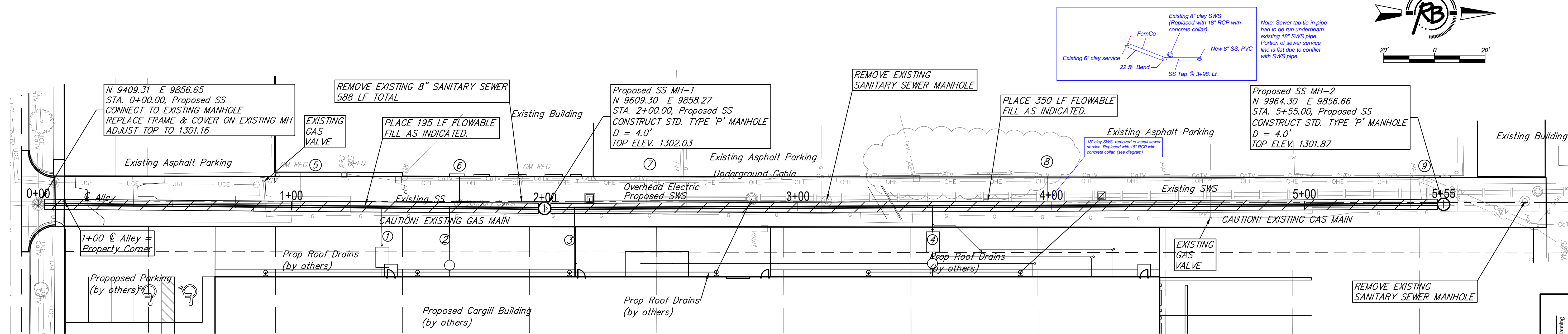
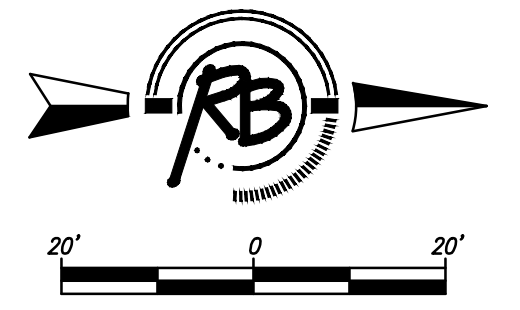
Gross Length of Project	640
Exceptions	
Additions	
Net Length of Project	640
Net Length of Bridges	
Net Length of Roads	640



JAMES L. ARMOUR, P.E., CITY ENGINEER



Ruggles & Bohm, P.A.
Engineering, Surveying, Land Planning
924 North Main (316) 264-8008
Wichita, Kansas 67203 (316) 264-4621 fax
www.rbkansas.com E-mail: info@rbkansas.com



CARGILL SEWER SERVICE TABLE

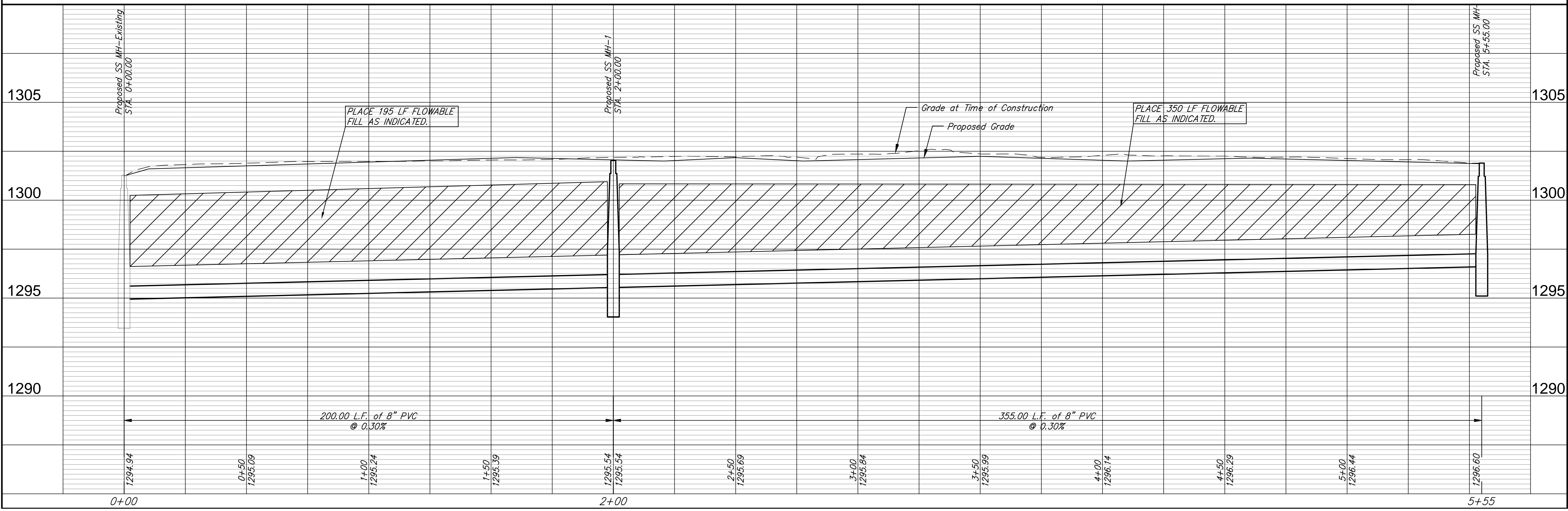
NUMBER	TYPE	STATION \ DIRECTION	FOR INFORMATION ONLY APPROXIMATE LENGTH 4" PIPE	
			VERTICAL	HORIZONTAL
1	8" X 4" Tee Saddle	1+38.7/Rt.	2.0'	10'
2	8" X 4" Tee Saddle	1+62.8/Rt.	2.0'	10'
3	8" X 4" Tee Saddle	2+14.8/Rt.	2.0'	10'
4	8" X 6" Tee Saddle	3+53.2/Rt.	2.0'	10'

NOTE: Vertical Riser Pipe shall be extended to 2' minimum above ground water elevation and 4' maximum below proposed ground elevation.

EXISTING SEWER SERVICES

NUMBER	TYPE	STATION \ DIRECTION
5	Existing Service	1+04/Lt.
6	Existing Service	1+66/Lt.
7	Existing Service	2+40/Lt.
8	Existing Service	3+98/Lt.
9	Existing Service	5+48/Lt.

NOTE: Existing Sewer Service locations are based on record information and should be considered approximate.



Ruggles & Bohm, P.A.
 Engineering, Surveying, Land Planning
 600 North Main
 Wichita, Kansas 67202
 www.rugglesandbohm.com

**SANITARY SEWER IMPROVEMENTS
 PROPOSED SANITARY SEWER
 WICHITA, KANSAS**

PROJECT NUMBER: 468-84691
 DRAWING FILE: engineering base [SS-1 P&P]

REVISIONS:
 DRAWN: ECG July 16, 2010
 DESIGN: ECG UTILITY
 REVIEW: ECG
 DATE: Aug. 30, 2010

RB JOB NO. XX
 SHEET NO. 13