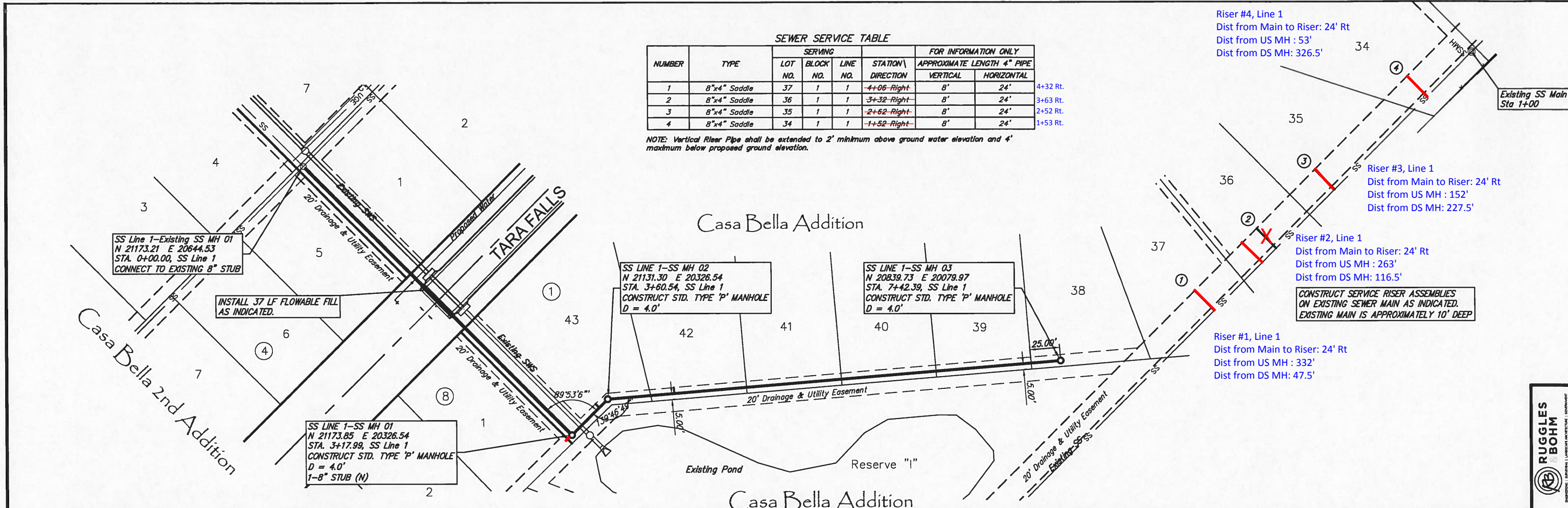


SEWER SERVICE TABLE

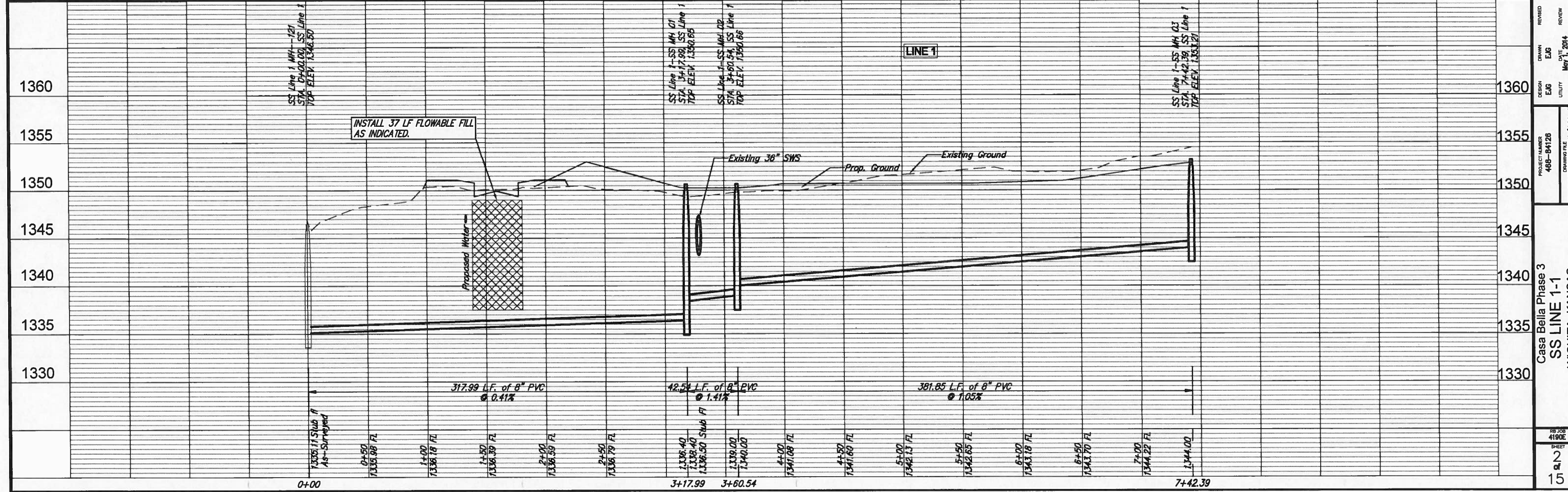
NUMBER	TYPE	SERVING				FOR INFORMATION ONLY		
		LOT NO.	BLOCK NO.	LINE NO.	STATION\ DIRECTION	APPROXIMATE LENGTH 4" PIPE	VERTICAL	
1	8"x4" Saddle	37	1	1	4+06-Right	8'	24'	4+32 Rt.
2	8"x4" Saddle	36	1	1	3+32-Right	8'	24'	3+63 Rt.
3	8"x4" Saddle	35	1	1	2+62-Right	8'	24'	2+52 Rt.
4	8"x4" Saddle	34	1	1	1+52-Right	8'	24'	1+53 Rt.

NOTE: Vertical Riser Pipe shall be extended to 2' minimum above ground water elevation and 4' maximum below proposed ground elevation.



- Riser #4, Line 1
Dist from Main to Riser: 24' Rt
Dist from US MH : 53'
Dist from DS MH: 326.5'
- Riser #3, Line 1
Dist from Main to Riser: 24' Rt
Dist from US MH : 152'
Dist from DS MH: 227.5'
- Riser #2, Line 1
Dist from Main to Riser: 24' Rt
Dist from US MH : 263'
Dist from DS MH: 116.5'
- Riser #1, Line 1
Dist from Main to Riser: 24' Rt
Dist from US MH : 332'
Dist from DS MH: 47.5'

CONSTRUCT SERVICE RISER ASSEMBLIES ON EXISTING SEWER MAIN AS INDICATED. EXISTING MAIN IS APPROXIMATELY 10' DEEP.



RUGGLES & BOHM

PROJECT NUMBER: 488-84126
DRAWING FILE: SS LINE 1-1
ENGINEERING BASE: [SS1-1]

Casa Bella Phase 3
SS LINE 1-1
WICHITA, KANSAS

DESIGN: EAG
DRAWN: EAG
REVIEW: EAG
DATE: May 1, 2014

SHEET: 2 OF 15