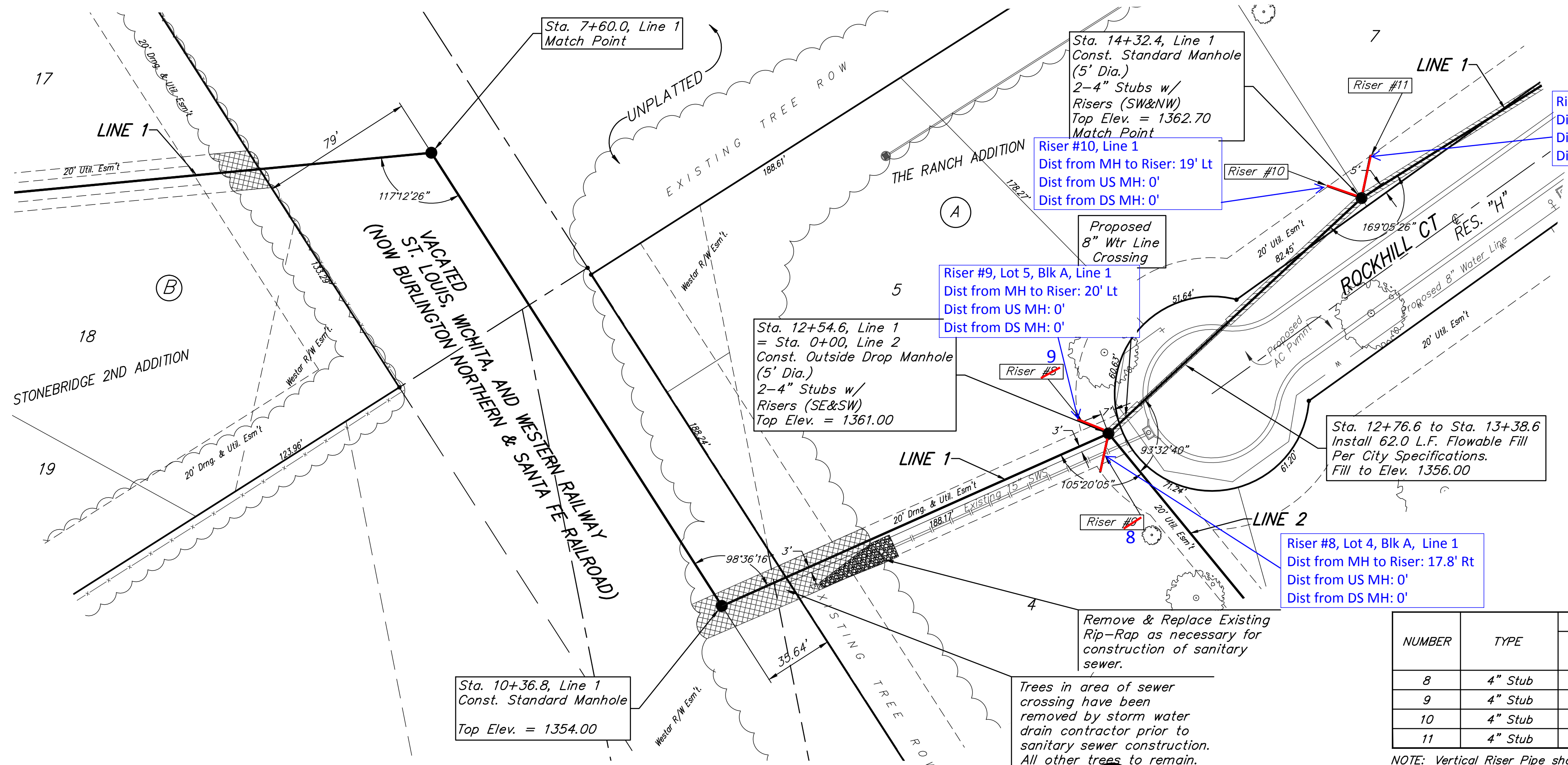


BENCHMARKS

"X" Cut top of 18" RCP 1' east of west end of RCP 31' south and 35' east of SE corner of the NE1/4 of Section 12, TWP. 27-S, R-2-E. Elev. = 1361.23 NAVD88

"□" Cut on concrete slab north base of entry gate 123' west of east section line and 190' south of the north property line. Elev. = 1368.38 NAVD88



Riser #11, Line 1
Dist from MH to Riser: 22' Lt
Dist from US MH: 0'
Dist from DS MH: 0'

Riser #9, Lot 5, Blk A, Line 1
Dist from MH to Riser: 20' Lt
Dist from US MH: 0'
Dist from DS MH: 0'

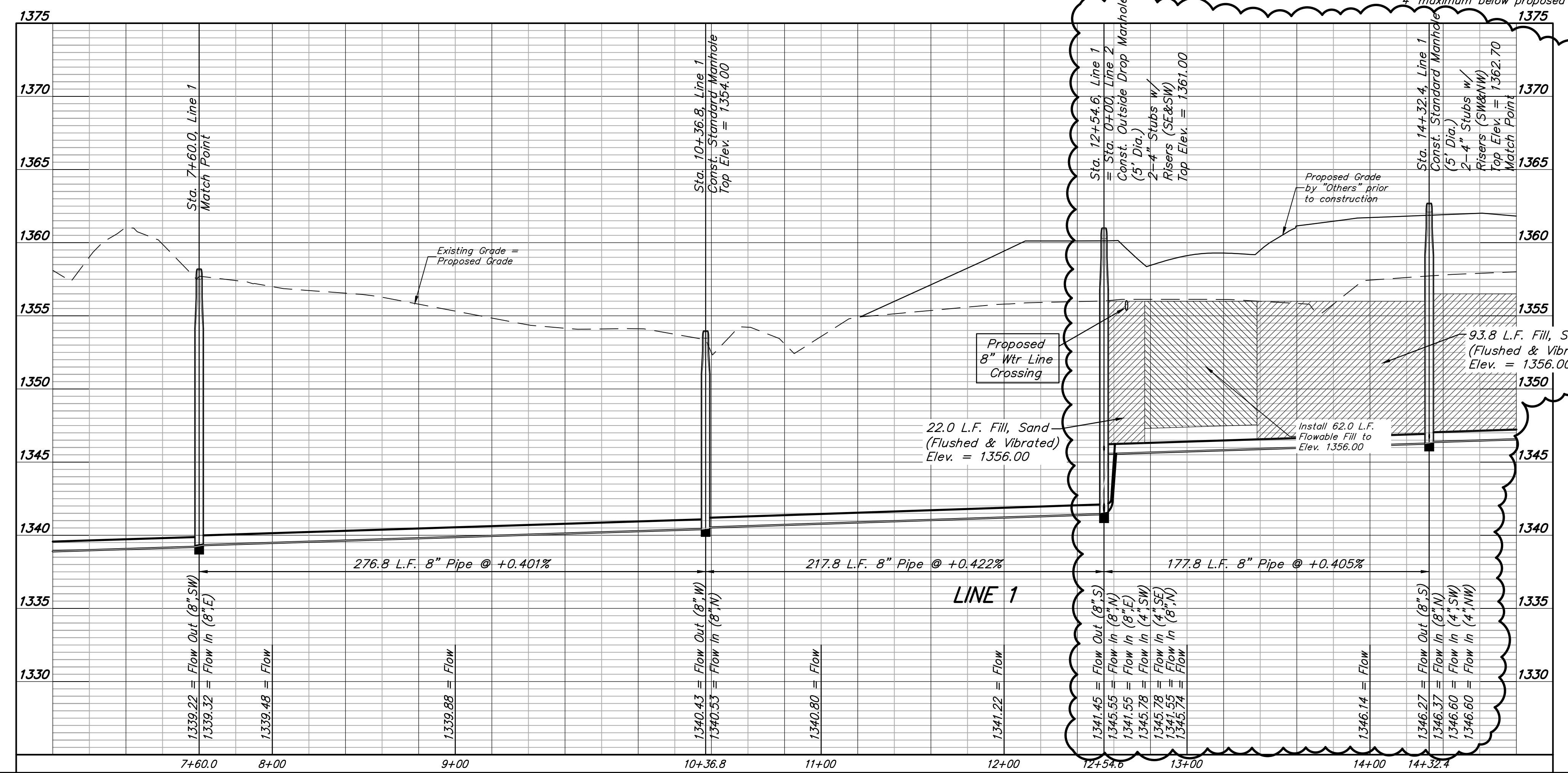
Riser #8, Lot 4, Blk A, Line 1
Dist from MH to Riser: 17.8' Rt
Dist from US MH: 0'
Dist from DS MH: 0'

All trench and manhole excavation areas from Sta. 12+54.6 to Sta. 12+76.6 & Sta. 13+38.6 to Sta. 14+32.4, Line 1 shall be backfilled with sand. The sand backfill shall be within two feet of existing grade and shall be water-jetted and vibrated during backfilling. All costs shall be paid for as L.F. "Fill, Sand (Flushed & Vibrated)".

SEWER SERVICE TABLE

NUMBER	TYPE	LOCATION			FOR INFORMATION ONLY	
		LOT NO.	BLOCK NO.	LINE NO.	STATION/DIRECTION	APPROXIMATE LENGTH 4" PIPE
8	4" Stub	4	A	1	12+54.6/Lt.	11' VERTICAL, 17.8' HORIZONTAL
9	4" Stub	5	A	1	12+54.6/Rt.	11' VERTICAL, 20' HORIZONTAL
10	4" Stub	6	A	1	14+32.4/Lt.	12' VERTICAL, 19.3' HORIZONTAL
11	4" Stub	7	A	1	14+32.4/Lt.	12' VERTICAL, 22' HORIZONTAL

NOTE: Vertical Riser Pipe shall be extended to 2' minimum above ground water elevation and 4' maximum below proposed ground elevation.



Remove Existing Trees Only as ABSOLUTELY Necessary For Construction and with the permission of the Developer or Baughman Co. Trees Not In Direct Conflict With Proposed New Construction Shall Remain And Be Protected From Damage. Cost to be Included in Bid Item "Site Clearing"



Baughman The Ranch Addition - Phase I
LINE 1
Sanitary Sewer Improvements

PROJECT NUMBER: 468-84919
DESIGN: AEG
DRAWN: JAK

REVISIONS: 6/24/14 TMS
APPROVED: DATE 05/14

SCALE: Noted
SHEET: 3 OF 17