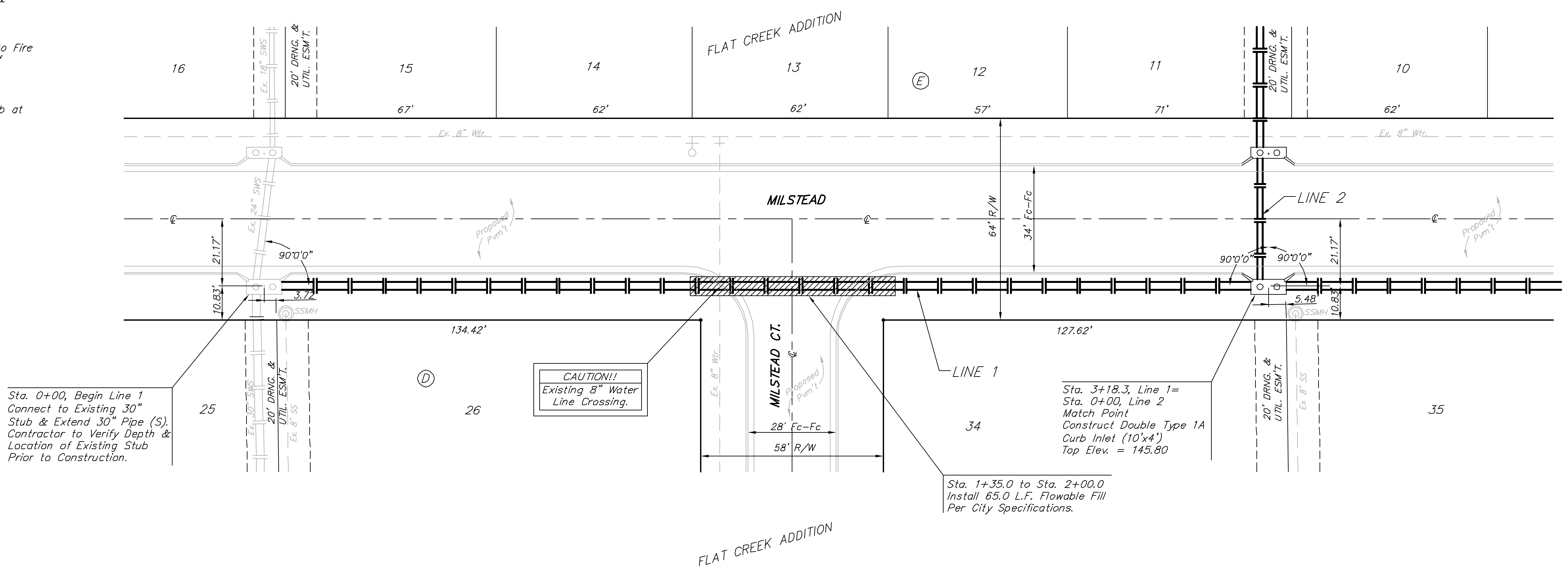


BENCHMARKS:
 BM#1: "□" Cut in top of curb, east return of SE corner of Lotus & Parkridge.
 Elev. = 145.99 (City Datum)
 BM #2: C.O.W. Disc Adjacent to Fire Hydrant in S.E. Curb Return of Grant & Milstead.
 Elev. = 146.09 (City Datum)
 BM #3: "X" Cut in Top of Curb at South End of Golden Hills Ct. Cul-de-Sac.
 Elev. = 147.73 (City Datum)

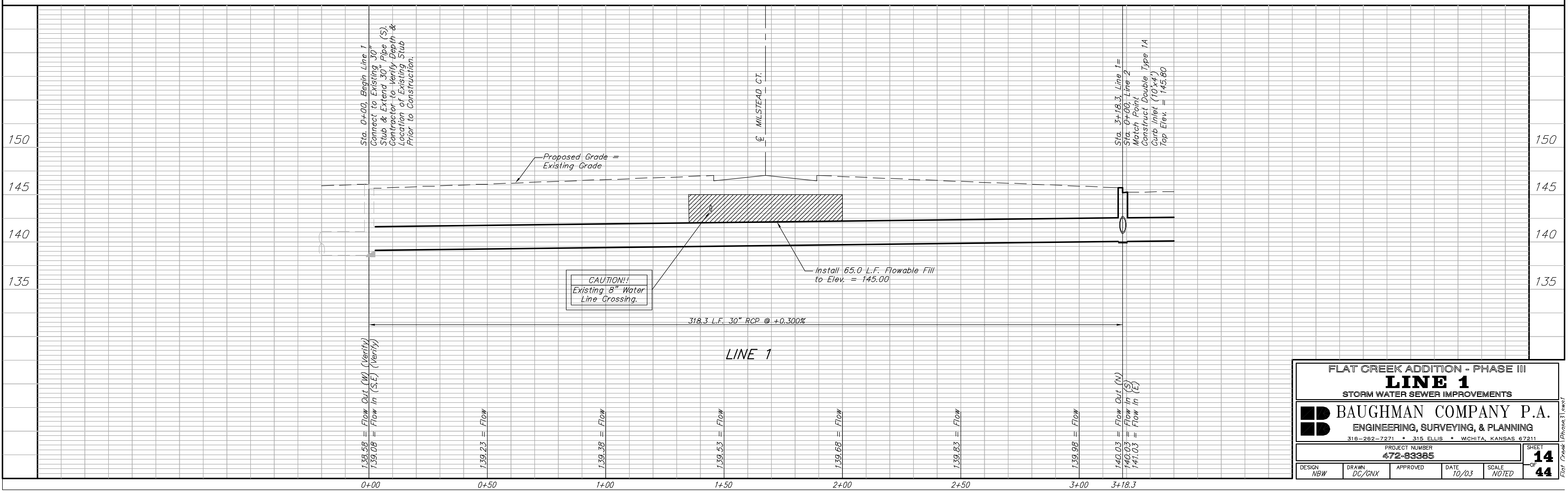
Scale
 1" = 20' Horizontal
 1" = 5' Vertical
 • = Iron



Sta. 0+00, Begin Line 1 Connect to Existing 30" Stub & Extend 30" Pipe (S). Contractor to Verify Depth & Location of Existing Stub Prior to Construction.

Sta. 3+18.3, Line 1 = Sta. 0+00, Line 2 Match Point Construct Double Type 1A Curb Inlet (10'x4') Top Elev. = 145.80

Sta. 1+35.0 to Sta. 2+00.0 Install 65.0 L.F. Flowable Fill Per City Specifications.



FLAT CREEK ADDITION - PHASE III
LINE 1
 STORM WATER SEWER IMPROVEMENTS

BAUGHMAN COMPANY P.A.
 ENGINEERING, SURVEYING, & PLANNING
 316-262-7271 • 315 ELLIS • WICHITA, KANSAS 67211

PROJECT NUMBER
472-93385

DESIGN NBW DRAWN DC/CNX APPROVED DATE 10/03 SCALE NOTED

SHEET **14** OF **44**

Flat Creek Phase 3 Issues