

Sheet Index

- 1 Title Sheet
- 2 Key Sheet
- 3 General Notes
- 4 Pavement Crossing & Details
- 5 Wheelchair Ramp Details
- 6 Driveway Details
- 7 Bike Section & Path Details
- 8-11 Plaza Details
- 12 Retaining Wall Details
- 13 Handrail & Hubguard Details
- 14 Bridge Deck & Handrail Details
- 15-27 Path Paving Plans & Profiles
- 28-35 Street Crossing Plans & Paving Plans
- 36 Shocker Drive Sidewalk
- 37-38 Hydraulic Trail Head Plans
- 39-41 Hillside Pause Point Plans
- 42-43 13th Street Trail Head Plans
- 44-45 17th Street Trailhead Plans
- 46 Neighborhood Connection Plan
- 47-48 Hillside Signalization Plan
- 49 Signage Details
- 50-57 Signage Plans
- 58 Storm Sewer Plan & Profile
- 59-60 Traffic Control Plans
- 61-62 Summary of Quantities
- 63-66 Erosion Control BMP's
- 67-72 Erosion Control Plans
- 73 Landscape Details & Schedule
- 74-77 Landscape Plans
- 78-84 Lighting Plans, Details, Schedules

FHWA REGION NO.	STATE	PROJECT NO.	FISCAL YEAR	SHEET NO.	TOTAL SHEETS
7	KANSAS	87 TE-0353-01	2014	1	84

FEDERAL: T035 (301)

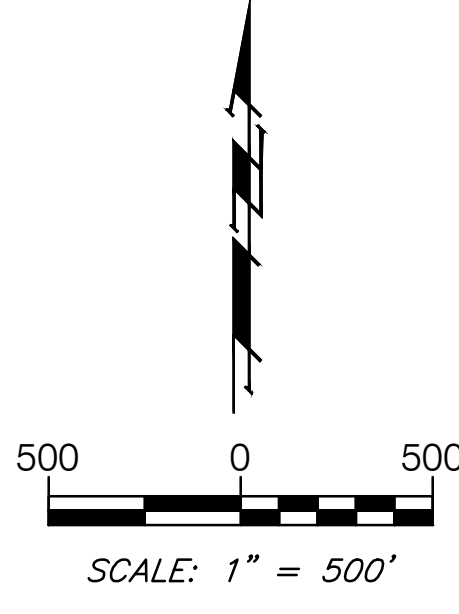
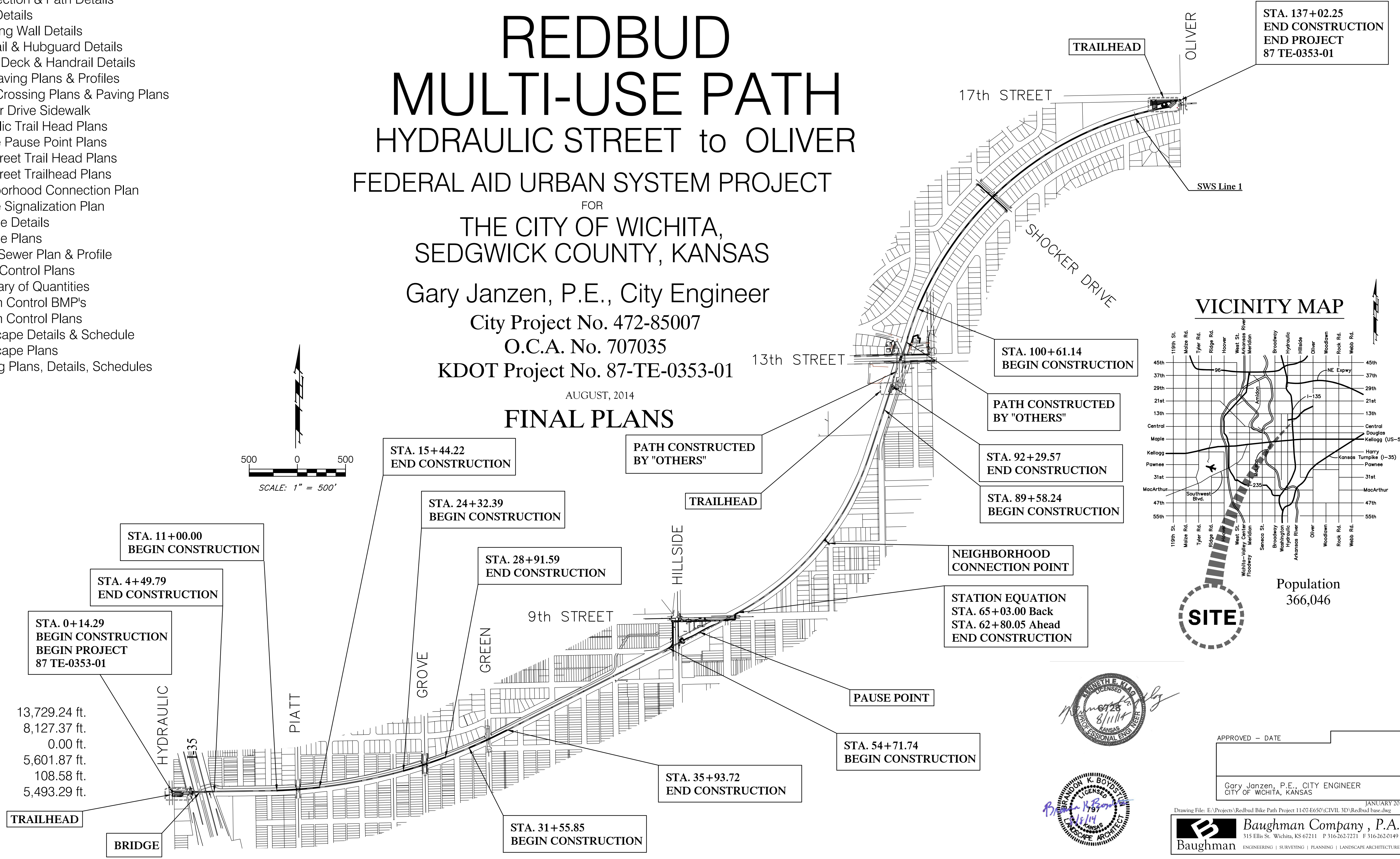
- GRADING
- SURFACING
- STORM SEWER
- SEEDING
- TRAFFIC SIGNALS
- MARKING
- SIGNAGE

STATE OF KANSAS
DEPARTMENT OF TRANSPORTATION

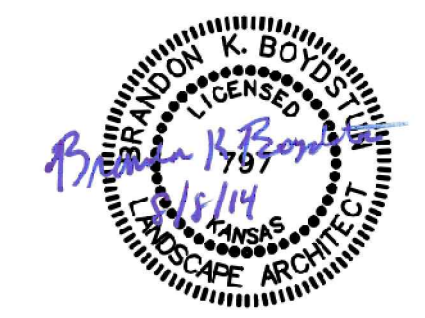
CONSTRUCTION PLANS FOR PROPOSED
REDBUD
MULTI-USE PATH
HYDRAULIC STREET to OLIVER
FEDERAL AID URBAN SYSTEM PROJECT

FOR
THE CITY OF WICHITA,
SEDGWICK COUNTY, KANSAS
Gary Janzen, P.E., City Engineer
City Project No. 472-85007
O.C.A. No. 707035
KDOT Project No. 87-TE-0353-01

AUGUST, 2014
FINAL PLANS



Gross Length of Project	13,729.24 ft.
Exceptions	8,127.37 ft.
Additions	0.00 ft.
Net Length of Project	5,601.87 ft.
Net Length of Bridges	108.58 ft.
Net Length of Road	5,493.29 ft.



APPROVED - DATE

Gary Janzen, P.E., CITY ENGINEER
CITY OF WICHITA, KANSAS